

# **ANNUAL REPORT 1983**

**Asian Institute of Technology**

<b>CONTENTS</b>	3	Board of Trustees
	5	AIT in Brief
	6	Foreword
	7	Academic Development
	9	Faculty and International Research Staff
	15	Organizational Chart of AIT
	16	Enrollments
	17	Graduations
	18	Sponsored and Grant Research
	25	Continuing Education
	27	Other Developments
	29	Campus and Physical Plant
	31	Donor Relations
	38	Alumni Relations
	41	Financial Review
	45	Site Plan
	46	Auditor's Report
	51	Administration



#### ABBREVIATIONS

<b>ADRC</b>	Academic Development Review Committee
<b>AGID</b>	Association of Geoscientists for International Development
<b>AITAA</b>	Asian Institute of Technology Alumni Association
<b>AFME</b>	French Agency for Energy Management
<b>ASEP</b>	Association of Structural Engineers of the Philippines
<b>ASEAN</b>	Association of Southeast Asian Nations
<b>BBD</b>	Broad Based Development
<b>CDG</b>	Carl Duisberg Gesellschaft e.V. Germany
<b>CIDA</b>	Canadian International Development Agency
<b>COSTED</b>	Committee on Science and Technology in Developing Countries
<b>DAAD</b>	German Academic Exchange Services
<b>DANIDA</b>	Danish International Development Agency
<b>DSE</b>	Deutsche Stiftung für Internationale Entwicklung
<b>EEC</b>	European Economic Community
<b>ESCAP</b>	Economic and Social Commission for Asia and the Pacific
<b>FAO</b>	Food and Agriculture Organization
<b>GPC</b>	German Program Coordinator
<b>GTZ</b>	Deutsche Gesellschaft für Technische Zusammenarbeit
<b>IADS</b>	International Agricultural Development Services
<b>IBM-AFE</b>	IBM World Trade Americas/Far East Corporation
<b>IBRD</b>	International Bank for Reconstruction and Development
<b>ICTP</b>	International Center for Theoretical Physics, Italy
<b>IDRC</b>	International Development Research Center
<b>ISS</b>	Institute of Social Studies
<b>KEIDANREN</b>	Federation Economic Organization of Japan
<b>KMIT</b>	King Mongkut Institute of Technology, Thailand
<b>MPW</b>	Ministry of Public Works, Indonesia
<b>MSU</b>	Mindanao State University, Philippines
<b>NORAD</b>	Norwegian Agency for International Development.

<b>NIA</b>	National Irrigation Administration, Philippines
<b>RCEHMT</b>	Regional Center for Energy, Heat and Mass Transfer for Asia and the Pacific
<b>RMI</b>	Resources Management International, Inc.
<b>SAREC</b>	Swedish Agency Research Cooperation Study In the Region
<b>SIR</b>	Study In the Region
<b>TIESCO</b>	Thai Industrial Engineering Services Co.
<b>TPC</b>	Taiwan Power Company, ROC
<b>UNCHS</b>	United Nations Center for Human Settlements, Nairobi
<b>UNESCO</b>	United Nations Educational, Scientific and Cultural Organisation
<b>UNDP</b>	United Nations Development Programme
<b>USM</b>	Universiti Sains, Malaysia
<b>USAID</b>	United States Aid for International Development
<b>WHO</b>	World Health Organization
<b>WMO</b>	World Meteorological Organization
<b>WRPC</b>	Water Resources Planning Commission, Taiwan, ROC
<b>WRDTC</b>	Water Resources Development Training Center, Roorkee, India

#### Academic Divisions and Centers

<b>AFE</b>	Division of Agricultural & Food Engineering
<b>CA</b>	Division of Computer Applications
<b>ET</b>	Division of Energy Technology
<b>EE</b>	Division of Environmental Engineering
<b>GTE</b>	Division of Geotechnical & Transportation Engineering
<b>HSD</b>	Division of Human Settlements Development
<b>IEM</b>	Division of Industrial Engineering & Management
<b>SEC</b>	Division of Structural Engineering & Construction
<b>WRE</b>	Division of Water Resources Engineering
<b>LRDC</b>	Library & Regional Documentation Center
<b>RRDC</b>	Regional Research & Development Center
<b>ELC</b>	English Language Center
<b>ARRSTC</b>	Asian Regional Remote Sensing Training Center
<b>RCC</b>	Regional Computer Center
<b>PCAD</b>	Programs in Computer Applications Development

## Board of Trustees

### MEMBERSHIP OF THE BOARD OF TRUSTEES

DECEMBER 1983

- Professor Wahiduddin Ahmad (1986)**  
Former Vice Chancellor  
Bangladesh University of Engineering and Technology  
Dacca, Bangladesh
- Dr. Se Hee Ahn (1986)**  
President, Yonsei University  
Seoul, Korea
- Ex* **H.E. Mr. Andre' Arnaud (1985)**  
Ambassador Extraordinary and Plenipotentiary  
The French Embassy  
Bangkok, Thailand
- Ex* **Professor A.S. Balasubramaniam (1986)**<sup>+</sup>  
*Ep* Faculty Representative  
Geotechnical and Transportation Engineering  
Asian Institute of Technology
- Professor M.Y. Bernard (1985)**  
Professor Titular in Electronics  
Conservatoire National des Arts et Metiers  
Paris, France
- Dr. Boonrod Binson (1985)**  
Former Chairman, Mekong Committee  
for Thailand  
Bangkok, Thailand
- Mr. Kwang-Shih Chang (1985)**  
Former Minister of Economic Affairs  
Taipei, Taiwan  
Republic of China
- Ex* **Mr. Chow Chowkwanyun (1986)**  
Managing Director  
The Thai Oil Refinery Co., Ltd.  
Bangkok, Thailand
- Ex* **Professor D.W. George, AO (1984), Vice Chairman**  
*Ep* Vice Chancellor  
The University of Newcastle  
New South Wales, Australia
- Mr. Akira Harada (1986)**  
Executive Vice President, Member of the Board  
Matsushita Electric Industrial Co., Ltd.  
Japan
- Ex* **Sir James Holt, KBE (1984)**  
Managing Director  
Sino-Brit Limited  
Bangkok, Thailand
- Dr. John A. Hrones**<sup>□</sup>  
Provost Emeritus  
Case Institute of Technology  
Cleveland, U.S.A.
- Ex* **H.E. Mr. R.L. Jermyn (1984)**  
Ambassador Extraordinary and Plenipotentiary  
New Zealand Embassy  
Bangkok, Thailand
- Ex* **Professor C.S. Jha (1986)**  
*Ep* Educational Adviser (Technical)  
Ministry of Education and Culture  
New Delhi, India
- Ex* **H.E. Mr. G.A. Jockel, CBE (1984)**  
Ambassador Extraordinary and Plenipotentiary  
The Australian Embassy  
Bangkok, Thailand
- Ex* **Professor John Hugh Jones**<sup>□</sup>  
*Ep* Vice President for Academic Affairs  
Asian Institute of Technology
- Professor F.S.C.P. Kalpage (1987)**  
Secretary  
Ministry of Higher Education  
Colombo, Sri Lanka
- Professor P. Karasudhi**<sup>□</sup>  
President  
AIT Alumni Association  
Asian Institute of Technology
- Professor Laeeq Ahmed Khan (1985)**  
OSD  
Ministry of Education  
Islamabad, Pakistan
- Ex* **Dr. Thanet Khoman (1984), Chairman**  
Former Deputy Prime Minister,  
Royal Thai Government  
Bangkok, Thailand
- Dr. Chen-Fu Koo (1986)**  
Chairman  
Taiwan Cement Corporation  
Taipei, Taiwan  
Republic of China
- Ex* **H.E. Dr. Hans Christian Lankes (1985)**  
Ambassador Extraordinary and Plenipotentiary  
Embassy of the Federal Republic of Germany  
Bangkok, Thailand
- Ep* **Dr. Choh-Ming Li (1985)**  
Emeritus Professor of Business Administration  
University of California  
Berkeley, U.S.A.
- Mr. James A. Linen**<sup>□</sup>  
Former President, TIME Inc.  
U.S.A.
- Ex* **Mr. Oscar B. Mapua**<sup>□</sup>  
*Ep* President  
Mapua Institute of Technology  
Manila, Philippines
- Mr. Erik Norsk (1985)**  
Managing Director, Kampsax AYS  
Dagmarhus, Denmark
- Ex* **Professor Alastair M. North**<sup>□</sup>  
*Ep* President  
Asian Institute of Technology
- Dr. Ir. A.E. Pannenberg (1986)**  
Vice President, VP  
N.V. Philips, Gloeilampenfabrieken  
Eindhoven, Netherlands

**H.E. Mr. John L. Paynter (1987)**  
Ambassador Extraordinary and Plenipotentiary  
The Canadian Embassy  
Bangkok, Thailand

**Professor Jacques Peters (1985)**  
Director of the Class of Science,  
Royal Belgian Academy  
Belgium

**Mr. Ralph A. Pfeiffer, Jr. (1985)**  
Chairman, IBM World Trade Americas/Far East Corp.  
New York, U.S.A.

**Professor S. Pramoetadi (1986)**  
Director of Academic Infrastructure  
Directorate General of Higher Education  
Indonesia

**The Hon. D.J. Samuel (1985)**  
President, Scallop Corporation  
New York, USA

**Ex Dr. Pote Sapianchai (1985)**  
Secretary-General  
National Education Commission  
Bangkok, Thailand

**Tan Sri Datuk Hamzah Sendut (1984)**  
Director  
ICI (Malaysia) Sdn Berhad  
Kuala Lumpur, Malaysia

**Ep Professor Hiroyoshi Shi-igai (1986)**  
Professor, Institute of Structural Engineering  
University of Tsukuba  
Sakura, Japan

**Dr. Gerardo P. Sicat (1985)**  
Chairman  
Philippine National Bank  
Manila, Philippines

**Professor Narasingh Narayan Singh (1987)**  
Secretary  
Ministry of Education and Culture  
Kathmandu, Nepal

**Ep Professor P.P.G.L. Siriwardene (1986)**  
Former Professor of Chemistry  
University of Colombo, Sri Lanka

**H.E. Mr. H.A.J. Staples, CMG (1985)**  
Ambassador Extraordinary and Plenipotentiary  
The British Embassy  
Bangkok, Thailand

**H.E. Mr. Masatada Tachibana (1987)**  
Ambassador Extraordinary and Plenipotentiary  
The Embassy of Japan  
Bangkok, Thailand

**Mr. Tan Teck Chwee (1984)**  
Chairman  
Public Service Commission  
Singapore

**Mr. Leonard Unger (1986)**  
Professor of Diplomacy  
Tufts University  
U.S.A.

**Dr. Puey Ungphakorn**  
Former Governor of the Bank of Thailand  
London, United Kingdom

Secretary: Emilie Ketudat (Mrs)  
Asian Institute of Technology

**Notes:**

- Ex Officio Member:  
President, Vice President for Academic Affairs, The President of  
the AIT Alumni Association
- Life member  
In all other cases, the period of appointment terminates in the year  
shown in brackets, normally after the January Board meeting.
- + Elected from the Faculty
- Ep Member of Educational Policy Committee  
Including Chairman of the ADRC, (as an Ex-Officio member)
- Ex Member of Executive Committee

## AIT in Brief

The Asian Institute of Technology, an autonomous, international postgraduate technological institute originally established in 1959, was chartered in 1967 as an independent, international and non-profit making educational institution by special legislation of the Royal Thai Government.

The Institute exists to help serve the technological requirements of Asia by providing advanced education in engineering, science and allied fields through:

**ACADEMIC PROGRAMS** leading to the degree of Master of Engineering, Master of Science, Doctor of Technical Science, and Diplomas;

**RESEARCH ACTIVITIES** by faculty and students directed towards the solution of technological problems to improve the quality of life in Asia;

**SPECIAL PROGRAMS** comprising conferences, seminars, and short in-service training courses.

Degree and diploma programs are offered in nine Academic Divisions:

- Agricultural and Food Engineering
- Computer Applications
- Energy Technology
- Environmental Engineering
- Geotechnical and Transportation Engineering
- Human Settlements Development
- Industrial Engineering and Management
- Structural Engineering and Construction
- Water Resources Engineering

Specialized training programs are provided by the Continuing Education Center, the Asian Regional Remote Sensing Training Center and the Programs for Computer Applications Development in the Regional Computer Center. The English Language Center and the Mathematics and Statistics Coordinators provide support teaching.

The Regional Research and Development Center undertakes comprehensive research and consultative services for regional development needs, while the Library and Regional Documentation Center responds to the information needs of the Institute and the Asian region as a whole, through its four specialized information centers.

AIT is supported by contributions from governments, foundations, business and industry and individuals, in the form of grants for:

- Campus Development
- Scholarships
- Seconded Staff
- Equipment
- Sponsored Research
- Operating Costs

The 400-acre site of the Institute located 42 kms north of Bangkok was provided by the Royal Thai Government. Buildings have been financed by the Governments of Australia, the Republic of China, Japan, France, the Federal Republic of Germany, New Zealand, Thailand, the United Kingdom, the United States and by the Lee Foundation of Singapore and the Korean Traders Scholarship Foundation. About 50 donors provide scholarships for the majority of the Institute's students who come from more than 20 Asian countries and some from outside the region. The major countries represented are Bangladesh, the Republic of China, India, Indonesia, Malaysia, Nepal, Pakistan, the Philippines, Sri Lanka and Thailand.



## Foreword

This is my first chance to present the Institute's Annual Report. Since the Presidency changed hands in the middle of the year, credit for the achievements listed herein must lie with my predecessor, Dr. Robert B. Banks. It gives us all great pleasure that in 1984 the Board of Trustees will bestow an Honorary Degree upon him in recognition of his meritorious service to the Institute. In addition, I should like to record my own personal thanks for the friendship and assistance he has given me, as well as for the state of the Institute it is my privilege now to lead.

I have joined the Institute at a time of recession in most developed countries where the resulting economic climate has produced a general retrenchment in higher education. Against that background this Institute, drawing most of its support from the aid programs of developed countries, is in general terms as healthy as almost any other institution of higher education. Its academic purpose of technological education to meet the needs of developing countries in Asia is clearly distinguishable and widely supported.

The year has seen a steady growth in both student and faculty members, which totalled 614 and 89, respectively, in the third (September) term of the year. Partially contributing to this has been the healthy growth of enrollments in the Programs in Computer Applications Development (run by the Regional Computer Center) and in the Certificate Program of the Asian Regional Remote Sensing Training Center.

During the year the Institute received over \$15 million in cash and kind contributions from 24 Governments, much of which is reported in the accounts for the 1982-83 fiscal year. External support for the Institute is thus running at its highest level ever. Although no new buildings and facilities were opened during the year, construction started on extensions to the Engineering Experimental Station (funded by the Republic of China) and to the Energy Technology Building (funded by France).

An annual report is, of course, a statement of past events. Nevertheless, it is appropriate to end this preface with some thoughts for the future. During the year it became apparent that as it evolves to meet changing needs in the region, the Institute could do much more in two areas. First, it is well placed to offer an integrated approach to the use and conservation of natural resources. Central to this theme are resource surveying, forestry and agricultural crop husbandry, geological and geographical aspects of resource availability, disaster vulnerability and risk analysis, energy utilization planning and policy making, and so on. Preliminary planning for such a program has been initiated.



Rather more radically, I should like to balance the Institute's thrusts in civil engineering and sociological areas with an involvement in manufacturing technology. This would require very careful selection of those manufacturing industries which are likely to contribute in the next decade to the economic stability and development of countries in the region. The most important feature of the required graduate skills is that they should include capability for rapid change and innovation in manufacturing processes. The development of an Institute activity in this field will require tripartite collaboration between the Institute, the private sector in both developed and developing countries, and government agencies. I have already experienced an interested response to such thoughts in both private and public sectors.

The Institute ended 1983 on a high note, as this report shows. We all look forward to the future with hope and with confidence.

A handwritten signature in dark ink, which reads "Alastair M. North". The signature is written in a cursive, slightly stylized font.

Alastair M. North  
President

## Academic Development

The Institute's growth during the calendar year is expressed in the consistent increases in student enrollments during the three trimesters. In the nine Academic Divisions, enrollments were as follows: January 1983 – 530 (AFE, CA, ET), May 1983 – 542 (IEM, HSD, WRE), and September 1983 – 571 (GTE, EE, SEC).

Student enrollments in the Programs in Computer Applications Development (PCAD), the Asian Regional Remote Sensing Training Center (ARRSTC), and the Regional FARMAP Training Center for Asia and the Pacific had also been encouraging. Similarly well received and attended were the training programs conducted by the Continuing Education Center (CEC) and the Regional Research and Development Center.

From its inception, the Institute was envisaged as having an international character. The extent to which this has been achieved is indicated by the collective representation of 37 countries in the student body, the teaching faculty, and the Board of Trustees. Most recently, the widening field is reflected in the enrollment of students from two African countries and one Caribbean country.

### ACADEMIC SENATE

The Academic Senate recommends to the President policies for developing and conducting the academic programs. It enacts academic regulations, reviews programs of study, and approves course alterations and new courses. The Senate is assisted by its two standing committees: the Academic Development and Review Committee and the Faculty/Student Liaison Committee.

Additionally, ad hoc committees may be appointed by the Vice President for Academic Affairs to guide the Senate on particular matters.

### ACADEMIC PUBLICATIONS

A wide range of publications, including journal articles, conference papers, research reports and edited books and proceedings, was produced in the Institute during the past year. In assessing the numbers, some caution should be taken because of double counting in cases of joint authorship from different Academic Divisions or Centers.

### MATHEMATICS AND STATISTICS

Following detailed study by an ad hoc committee on Applied Mathematics and Statistics, and consideration and recommendation by ADRC, the Senate approved the adoption of seven courses in mathematics and statistics, mainly as substantial revisions of previously existing courses. The Senate also referred for further study to a newly created body of Mathematics and Statistics Coordinators an additional five courses.

An innovation to be implemented for the January 1984 entry is a no-credit Remedial Mathematics course. An entrance examination on five groups of mathematical subjects is to be administered for all new entrants. Reports shall be provided to the pertinent Division Chairmen on the mathematical capability of all students entering a Division. It shall then become the responsibility of the Division to require enrollment in Remedial Mathematics, or to permit entering students to proceed directly to credit courses in mathematics or statistics. It is expected that a more cogent program of mathematical instruction and learning will be derived from the work of the several academic bodies contributing to this development.

### Summary of Publications During 1983

Division/Center	Number of Publications As				Total Publications
	Res. Jnl. Paper	Conference Paper	Research Report	Edited Proc/Book	
Agricultural & Food Engineering	11	9	5	2	27
Computer Applications	15	14	2	2	33
Energy Technology	3	13	1	—	17
Environmental Engineering	21	20	1	1	43
Geotechnical & Transportation Engineering	4	10	—	7	21
Human Settlements Development	4	14	10	2	30
Industrial Engineering & Management	10	7	3	1	21
Structural Engineering & Construction	5	14	1	—	20
Water Resources Engineering	7	15	3	—	25
Asian Regional Remote Sensing Training Center	5	9	—	2	16
Continuing Education Center	—	—	—	4	4
English Language Center	—	1	—	1	2
Library & Regional Documentation Center	5	7	1	4	17
Regional Computer Center	—	—	—	—	—

## REGIONAL RESEARCH AND DEVELOPMENT CENTER

The Regional Research and Development Center (RRDC) was established on November 1, 1982. It has evolved from AIT's wide ranging and outstanding academic and sponsored research activities to date.

RRDC undertakes specialized research relating to engineering, science, technology transfer and allied fields, as well as multidisciplinary studies on problems directly relevant to the development of the region. A major objective is to foster regional cooperation in research which can in turn assist the developing countries of the region in the formulation and implementation of their development strategies.

An Advisory Board, consisting of representatives of major planning agencies, science and technology institutes, key personnel from international development agencies from developed countries and people with wide experience in conducting research in the region, provides guidelines for the research areas which are to be addressed by RRDC.

In April 1983, RRDC formally undertook four important studies for the National Economic and Social Development Board (NESDB) of the Royal Thai Government, as follows :

- Policy Study on Agricultural Development and Related Activities,
- Preparation of the Master Plan for Rural Water Supply and Sanitation in Thailand,
- Surface Water Evaluation in Northeast Thailand, A Pilot Project Using Satellite Remote Sensing, and
- Flood Routing and Control Alternatives of Chao Phraya River for Bangkok

## DIPLOMA IN WATER SUPPLY AND SANITATION

The Senate approved a new Diploma program to be offered by the Division of Environmental Engineering, to support the objectives of the International Drinking Water Supply and Sanitation Decade of the United Nations. Conforming to the overall structure of the AIT Diploma program, the new program comprises five new specialist courses which will be integrated with certain existing courses offered by the Division. Substantial support to the 12-month program is expected through World Health Organization scholarships.

## TIM KENDALL MEMORIAL PRIZE

The Prize has now been awarded at six Graduations. The 1983 recipients and their corresponding Academic Divisions and graduations are as follows: Mr. Ahamed Lebbe Mohamed Mauroof (SEC, April) Ms. Suat Kheng Saw (CA, August); and Mr. Loh Chee Kit (WRE, December). Recipients in previous years were students from Nepal, Singapore (two), India, Sri Lanka and Malaysia.



*Students conduct water supply-related experiments in the Water Resources Engineering laboratory.*

*The 1983 Tim Kendall Memorial Prize awardees. Clockwise, Mr. Mauroof, Mr. Loh Chee Kit and Ms. Suat Kheng Saw.*



## Faculty & International Research Staff

In the January 1983 term, there were 84 full time faculty members and 31 international research staff members employed in the Institute. In the May term the number of faculty rose to 87 and international research staff to 34. In the September term, an additional two faculty members were appointed while the number of international research staff remained the same.

Although the total number of nationalities represented in the faculty remained at 24, the Institute lost by resignation one professor from Israel and gained a faculty member from Malaysia.

Faculty promotions, appointments and resignations are given on page 10, while a complete list of faculty members in 1983 starts on page 11.

### Faculty and International Academic & Research Staff During 1983

Country of Origin	January Term			May Term			September Term		
	Faculty	Staff	Total	Faculty	Staff	Total	Faculty	Staff	Total
Australia	5	2	7	5	2	7	5	2	7
Austria	1	-	1	1	-	1	-	-	-
Bangladesh	4	3	7	4	3	7	3	2	5
Belgium	3	-	3	2	-	2	2	-	2
Canada	2	-	2	2	-	2	2	1	3
China, Republic of	1	-	1	1	-	1	2	-	2
Denmark	2	-	2	2	-	2	2	-	2
France	5	2	7	5	2	7	5	2	7
Germany, Fed. Rep. of	5	2	7	5	2	7	6	2	8
India	5	3	8	6	3	9	7	3	10
Iran	-	1	1	-	1	1	-	1	1
Israel	1	-	1	1	-	1	-	-	-
Italy	-	-	-	-	-	-	1	-	1
Japan	7	-	7	7	-	7	6	-	6
Korea, Republic of	1	-	1	1	-	1	1	-	1
Malaysia	-	-	-	1	1	2	1	1	2
Nepal	1	1	2	1	2	3	1	2	3
Netherlands	1	-	1	2	-	2	2	-	2
Pakistan	1	1	2	1	1	2	1	1	2
Philippines	3	3	6	3	3	6	3	3	6
Sri Lanka	3	2	5	3	2	5	3	2	5
Switzerland	1	+	1	1	-	1	1	-	1
Thailand	16	9	25	17	9	26	19	9	28
U. K.	6	-	6	6	1	7	7	1	8
U. S. A.	9	2	11	9	2	11	8	2	10
Vietnam	1	-	1	1	-	1	1	-	1
Totals	84	31	115	87	34	121	89	34	123

## FACULTY PROMOTIONS, APPOINTMENTS AND RESIGNATIONS

### Promotions

#### From Associate Professor to Full Professor: - Effective Date

H.D. Dias	24 January 1983
Prinya Nutalaya	24 January 1983
K.E. Weber	24 January 1983

#### From Assistant Professor to Associate Professor :

W.M. Hodson	1 January 1983
K. Hoshi	1 January 1983
Kaew Nualchawee	1 January 1983
F. Prinzi	1 January 1983
K. Saeed	24 January 1983
K. Shanker	24 January 1983

### New Appointments

#### Professor :

A. Ishido	24 January 1983
E.A. Mesritz	11 July 1983
A.M. North	1 August 1983

#### Associate Professor :

A.B. Etherington	1 July 1983
J.J. Mol	8 June 1983
S. Ohgaki	22 October 1983
G. Stahl	25 June 1983
M. Tomita	22 October 1983

#### Assistant Professor:

S. Chandra	8 August 1983
M. Clink	3 January 1983
Apisit Eiumnoh	1 December 1983
D.R. Hall	1 September 1983
B.R. Kenny	1 September 1983
F. Lasnier	20 January 1983
G. Rantucci	9 August 1983
W.E.J. Tips	15 January 1983
K.L. Wee	29 March 1983
Y. Yamada	31 May 1983

#### Instructor :

Prapaporn Tungsarote	1 April 1983
Chamniern Vorratnchaiphan	1 August 1983

### Resignations

#### Professor :

S. Angel	13 August 1983
R.B. Banks	31 July 1983
J.A. Kearns	20 February 1983
Yudhbir	28 May 1983

#### Associate Professor :

Apichart Anukularmphai	30 June 1983
T. Iwami	25 August 1983
M. Koike	10 August 1983
G.M. Malik	11 September 1983
M.J. Murphy	30 September 1983
F. Prinzi	31 July 1983
T. Usami	22 August 1983

#### Assistant Professor :

W.L.M. Despiegelaere	13 February 1983
C.J. Hampton	30 June 1983
T. Omura	20 September 1983

## FULL TIME FACULTY MEMBERS

- Shlomo Angel** B.Arch., Ph.D., California (Berkeley).  
Professor of Human Settlements Planning.
- Apichart Anukularmphai** B.Sc., M.Sc., Technion;  
M.S., Ph.D., Utah State.  
Associate Professor of Agricultural Engineering.
- Anat Arbhahirama** B.Eng., Chulalongkorn; M.Eng., Chulalongkorn-SEATO Graduate School of Engineering; Ph.D., Colorado State.  
Professor of Water Resources Management and Policy.
- Raymon W. Archer** B.A. (Hons. in Econ.), Sydney; M.R.A.P.I.  
Associate Professor of Urban Land Management.
- Buddy H. Atwell** B.S., Ph.D., Texas A & M.  
Associate Professor of Remote Sensing.
- Nicanor C. Austriaco** B.S.C.E., National University of the Philippines; M.Eng., D.Eng., AIT.  
Director of Continuing Education Center.
- A.S. Balasubramaniam** B.Sc.(Eng.), Ceylon; Ph.D., Cambridge.  
Professor of Geotechnical Engineering.
- Robert B. Banks** B.S.C.E., M.S., Northwestern; Ph.D., California (Berkeley); D.I.C., London.  
Professor of Environmental Engineering.
- Dennes T. Bergado** B.S.C.E., Mindanao State University; M.Eng., AIT; Ph.D., Utah State University.  
Assistant Professor of Geotechnical Engineering.
- S.C. Bhattacharya** M.E., University of Roorkee; Ph.D., Cambridge.  
Associate Professor of Thermal Processes and Bio-mass.
- F. Blanchard** M.Sc., Ph.D., Paris University.  
Assistant Professor of Geothermal Energy.
- Sarvesh Chandra** B.E., M.Tech., Ph.D., I.I.T. Kanpur.  
Assistant Professor of Geotechnical Engineering.
- Fried Christoph** Dipl.-Ing., Dr.-Ing., Technical University, Braunschweig.  
Associate Professor of Irrigation and Drainage Engineering.
- H.R. Clarke** B.A., Macquarie; M.Ec., Ph.D., Australian National University.  
Assistant Professor of Industrial Economics.
- Marsha Clink** B.Sc., West Chester State College, Pennsylvania; M.A., E.S.L., University of Hawaii.  
Assistant Professor of English.
- Hiran D. Dias** M.A., Ph.D., Cambridge.  
Professor of Rural Development Planning.
- Peter Edwards** B.Sc., Liverpool; Ph.D., Texas.  
Associate Professor of Aquaculture.
- Wilfried H. Eppendorfer** B.Sc., M.Sc., Ph.D., Royal Vet. and Ag. University, Copenhagen.  
Associate Professor of Crop Production.
- A.B. Etherington** B.Arch., Cornell; M.A., Hawaii; M.E.P., Philippines; M.Arch., McGill.  
Associate Professor of Building Technology.
- R.H.B. Exell** M.A., D.Phil., Oxford University.  
Associate Professor of Thermal Processes and Solar Energy.
- Lawrence Fox III** B.S., Humboldt State; M.S., Ph.D., Michigan.  
Associate Professor of Remote Sensing.
- Okitsugu Fujiwara** B.S., M.S., Osaka; M.S., Stanford; Ph.D., Yale.  
Assistant Professor of Operations Research.
- David Gee-Clough** B.Sc., M.E., Wales; M.S., Cal. Tech.; Ph.D., California (Davis).  
Associate Professor of Agricultural Engineering.
- Jean-Dominique Grau** M.Sc.(Medical Biology), Ph.D.(Medical Biology), University of Geneva.  
Associate Professor of Environmental Engineering.
- Ashim Das Gupta** B.E.(Civil), Gauhati; M.Eng., D.Eng., AIT.  
Associate Professor of Water Resources Development.
- David R. Hall** B.A.(Hons), Birmingham; M.A., Essex; PGCE, Leeds.  
Assistant Professor of English.
- Christopher J. Hampton** B.A., Reading; PDESL, Leeds.  
Assistant Professor of English.
- D.I. Hertzmark** M.S., Ph.D., University of Wisconsin.  
Assistant Professor of Energy Economics.
- William M. Hodson** B.S., Redlands; M.A., UCLA; Ph.D., South Carolina.  
Associate Professor of Remote Sensing.
- Kiyoshi Hoshi** B.E.(Civil), M.E.(Civil), D.Eng., Hokkaido University.  
Associate Professor of Water Resources Development.
- Fude I** B.C.E., National Tsing Hua; Ph.D., Iowa.  
Professor of Environmental Management.
- Akira Ishido** B.E.C.E., D.Eng., University of Tokyo.  
Professor of Transportation Engineering.
- Nazrul Islam** B.A.(Hons.), M.A., Dacca.  
Associate Professor of Human Settlements Planning.
- Toshikatsu Iwami** B.S., Kyoto; B.E., Toyo; M.E., D.E., Tokyo Institute of Technology.  
Associate Professor of Human Settlements Planning.
- Jens Raunso Jensen** M.Sc., Ph.D., Royal Vet. and Ag. University, Copenhagen.  
Associate Professor of Soil Physics.
- Vinod Kumar Jindal** B.Sc.A.E., Pantnagar; M.S., Nebraska; Ph.D., Pennsylvania State.  
Associate Professor of Agricultural Engineering.
- Gary E. Johnson** Ph.B., M.S., North Dakota; Ph.D., Indiana State.  
Associate Professor of Remote Sensing.
- John Hugh Jones** B.S., M.S., California.  
Professor of Transportation Engineering.
- Hans Detlef Kammeier** Dipl. Ing., Reg. Bmstr, Munich.  
Associate Professor of Human Settlements Planning.
- Worsak Kanok-Nukulchai** B.Eng., Chulalongkorn; M.Eng., AIT; Ph.D., California (Berkeley).  
Associate Professor of Structural Engineering.
- Pisidhi Karasudhi** B.Eng., Chulalongkorn; M.Eng., Chulalongkorn-SEATO Graduate School; Ph.D., Northwestern.  
Professor of Structural Engineering.
- Brian R. Kenny** Teacher's Cert.(U.K.); M.A., Sussex; M. Phil; Dip. TESOL; London.  
Assistant Professor of English.

- Kong-Hwan Kim** B.Sc.Ag., M.Sc.Ag., Seoul National University; Ph.D., Massachusetts. Assistant Professor of Food Engineering.
- Masayuki Koike** B.Sc.A.E., Hyogo; M.Sc.A.E., D.Agr., Kyoto. Associate Professor of Agricultural Engineering.
- F. Lasnier** Ph.D., Paris University. Assistant Professor of Photovoltaics.
- Aulis Lind** B.A., Augustana College; M.A., Southern Illinois; Ph.D., Wisconsin. Associate Professor of Remote Sensing.
- Bindu Nath Lohani** B.E., (Hons.), Birla Institute; M.E., North Carolina State; D.Eng., AIT. Associate Professor of Environmental Engineering.
- Yew-Chaye Loo** B.Eng., Cheng Kung, Taiwan; M.Eng., AIT; Ph.D., Dundee. Associate Professor of Structural Engineering.
- N.J.D. Lucas** M.A., Ph.D., Pembroke College, Cambridge. Associate Professor of Energy Economics and Planning.
- Kanchit Malaivongs** B.Eng.(Hons.), Chulalongkorn; M.Eng., D.Eng., AIT. Associate Professor of Computing.
- G. M. Malik** B.A., Government College, Sargodha; M.A., Punjab; M.A., University of Texas, Austin; Ph.D., Queen's. Associate Professor of Computing.
- Milton J. Marcus** B.S., A.M., Ph.D., Columbia University, Faculty Pure Science; MBA, Columbia University, Graduate School of Business. Director of Regional Computer Center.
- E. A. Mesritz** M.Sc., Delft University. Professor of Energy Resources.
- Jacob Jan Mol** M.Sc., Agricultural University, Wageningen, The Netherlands. Associate Professor of Food Technology.
- Murtagh J. Murphy** B.A., M.A.(Hons.), University of New Zealand; B.A.(Hons.), Dip. REFL; Ph.D., London. Associate Professor of English.
- Samorn Muttamara** B.Sc., Chulalongkorn; M.S., Oregon State. Associate Professor of Environmental Engineering.
- Pichai Nimityongskul** B.Eng., Chulalongkorn; M.Eng., D.Eng., AIT. Associate Professor of Structural Engineering.
- Kaew Nualchawee** B.S., Chulalongkorn; M.S., Connecticut; Ph.D., Colorado State. Associate Professor of Remote Sensing.
- Prinya Nutalaya** B.A., M.S., Ph.D., Colorado. Professor of Engineering Geology.
- Shinichiro Ohgaki** B.Eng., M.Eng., D.Eng., University of Tokyo. Associate Professor of Environmental Engineering.
- Tatsuo Omura** B.Eng., M.Eng., D.Eng., Tohoku. Assistant Professor of Environmental Engineering.
- Hermann Maria Orth** Dipl.-Ing., Dr.-Ing., University of Karlsruhe. Associate Professor of Environmental Engineering.
- Ricardo P. Pama** B.S.C.E., Mapua Institute of Technology; M.Eng., Chulalongkorn-SEATO Graduate School; Ph.D., St. Andrews. Professor of Structural Engineering.
- Huynh Ngoc Phien** B.Sc., B.A., Hue; M.Sc., D.Tech.Sc., AIT. Associate Professor of Applied Statistics.
- Chongrak Polprasert** B.Eng., Chulalongkorn; M.Eng., AIT; Ph.D., Washington. Associate Professor of Environmental Engineering.
- Friedrich Prinzl** Dipl.-Ing., Dr.-Tech., Technical University of Graz. Associate Professor of Geotechnical Engineering.
- J. R. M. Radok** B.A., M.A., Melbourne; Dr.-Ing., Munich. Professor of Applied Mathematics.
- Md. Ataur Rahman** B.Sc.C.E., Bangladesh University of Engineering and Technology; M.S., Ph.D., Texas A & M. Associate Professor of Irrigation and Drainage Engineering.
- Giovanni Rantucci** Dr. Geologist, Rome University. Assistant Professor of Geotechnical Engineering.
- Khalid Saeed** B.Sc.Eng., University of Engineering and Technology, Lahore; M.Eng., AIT; Ph.D., MIT. Associate Professor of System Dynamics and Management.
- Gerard Y. Saunier** Ph.D., Montreal; D.Sc., Grenoble. Professor of Solar Energy.
- F. Sauter-Servaes** M.A., Syracuse University, Dr.rer.soc., University of Konstanz. Assistant Professor of Energy Economics.
- Kripa Shanker** B.Sc., Engg., Banaras Hindu University; M.Tech., I.I.T. Kanpur; M.S., Ph.D., Cornell. Associate Professor of Industrial Systems Engineering and Management.
- M. Nawaz Sharif** B.Sc.Eng., Bangladesh University of Engineering and Technology; M.E.A., George Washington; Ph.D., Texas A & M. Professor of Systems Engineering.
- Gajendra Singh** B.Sc.A.E., Pantnagar; M.S., Rutgers; Ph.D., California (Davis). Associate Professor of Agricultural Engineering.
- G. Stahl** Dipl.-Ing., Dr.-Ing. in Mech.Engg., Technical University of Braunschweig, Federal Republic of Germany. Associate Professor of Combustion Engines and Alternative Fuels.
- Mario T. Tabucanon** B.S.E.E., B.S.M.E., Cebu Institute of Technology; M.Eng., D.Eng., AIT. Associate Professor of Industrial Systems Engineering and Management.
- John C. S. Tang** B.S., M.S., Ph.D., Florida. Associate Professor of Industrial Systems Engineering and Management.
- Nguyen Cong Thanh** B.Sc., D.Sc., Laval. Professor of Environmental Engineering.
- Prida Thimakorn** B.Eng., Chulalongkorn; M.Eng., SEATO Graduate School of Engineering. Associate Professor of Hydraulic Engineering.
- Tawatchai Tingsanchali** B.Eng., Chulalongkorn; M.Eng., D.Eng., AIT. Associate Professor of Hydraulic Engineering.
- Walter E. J. Tips** B.Sc., M.Sc., M.TR.P., D.TR.P., Ghent. Assistant Professor of Rural Development Planning.
- Masahiko Tomita** B.Ag., Gifu; M.Ag., D.Ag., Kyoto. Associate Professor of Agricultural Engineering.

**Prapaporn Tungarote** B.Com.(Stat.), M.Com.(Stat.), Chulalongkorn.  
Instructor of Computing.

**Tsutomu Usami** B.E., M.E., Nagoya; D.Sc., Washington; D.Eng., Nagoya.  
Associate Professor of Structural Engineering.

**Jacques Valls** Dipl.(Chem.), L'Ecole Supérieure de Physique et de Chimie Industrielle de la Ville de Paris; Ph.D., Paris.  
Director of Library and Regional Documentation Center.

**Dirk L. van Oudheusden** B.S., State University Antwerp; M.S., Ph.D., Free University of Brussels.  
Associate Professor of Industrial Systems Engineering and Management.

**Saravanamuthu Vigneswaran** B.Sc.(Hons.), University of Peradeniya; M.Sc., AIT; Docteur Ingenieur, University of Montpellier.  
Assistant Professor of Environmental Engineering.

**Suphat Vongvisessomjai** B.Eng., Chulalongkorn; M.Eng., D.Eng., AIT.  
Associate Professor of Coastal Engineering.

**Paul Chamniern Vorratnchaiphon** M.Sc., AIT.  
Instructor in Low-Cost Housing Community Organization.

**Karl E. Weber** M.A., D. Phil., Heidelberg.  
Professor of Rural Development Planning.

**Kok-Leong Wee** B.Sc., London; M.Sc., Ph.D., (Stirling).  
Assistant Professor of Aquaculture.

**H. Wongkaew** B.A., Dip. Ed., TEFL, Sydney; M.A., Lancaster.  
Assistant Professor of English.

**Prida Wibulswas** DIC, Imperial College, London; Ph.D., University of London.  
Associate Professor of Thermal Processes.

**Martin Wieland** Dipl.-Ing. ETH, Dr.Sc.techn., Swiss Federal Institute of Technology, Zurich.  
Associate Professor of Structural Engineering.

**Vilas Wuwongse** B.Eng., M.Eng., D.Sc., Tokyo Institute of Technology.  
Assistant Professor of Computing.

**Yasuo Yamada** B.Eng., M.Eng., D.Eng., University of Tokyo.  
Assistant Professor of Geotechnical Engineering.

**Yudhbir** B.Sc., Punjab; M.Tech., I.I.T.; Ph.D., Cornell.  
Professor of Geotechnical Engineering.

## ASSOCIATED FACULTY MEMBERS

### COMPUTER APPLICATIONS

**Unahit Garnjanagoonchorn** B.Sc., St. Louis; M.S., Ph.D., Washington; (member of the Budget Bureau of Thailand).

**Boonserm Weesakul** B.Sc., M.Sc., Liverpool; M.A., Columbia; Ph.D., Western Australia; (member of the National Institute of Development Administration, Thailand).

### ENVIRONMENTAL ENGINEERING

**Pakit Kiravanich** B.Eng., M.Eng., Chulalongkorn; Ph.D., Oklahoma State; (member of the National Environment Board, Thailand).

**Wanchai Pothiphichitr** B.Sc., D.I.C., Ph.D., London; (member of Chulalongkorn University, Thailand).

**Benito van Bronckorst** M.Sc., University of Technology; (member of the Intl. Water Supply Consultants (IWACO), Rotterdam, Netherlands).

### GEOTECHNICAL AND TRANSPORTATION ENGINEERING

**E. W. Brand** B.Sc., Ph.D., Leeds; (Principal Government Geotechnical Engineer, Hong Kong).

**Prapansak Buranaprapa** B.Eng.(Hons.), Chulalongkorn; M.Eng., SEATO; Ph.D., Oklahoma State; (member of the Highway Department, Thailand).

**Za-Chieh Moh** B.S.C.E., National Taiwan; M.S., Iowa State; Sc.D., Massachusetts Institute of Technology; (Principal, Moh and Associates, Republic of China).

**Pichai Pamanikabud** B.Eng., M.Eng., Chulalongkorn; M.S., Wisconsin; Ph.D., Illinois; (member of the office of the National Environment Board, Thailand).

**Surachat Sambhandharaksa** B.Eng., New South Wales; M.Eng., AIT; Sc.D., Massachusetts Institute of Technology; (member of Chulalongkorn University, Thailand).

**Yongyuth Taesiri** B.Eng.(Hons.), Khon Kaen Univ.; M.Eng., AIT; Ph.D., Univ. of Florida; (member of the Highway Department, Thailand).

**Thavee Thanachareongit** B.Eng., Chulalongkorn; D.E.A.; D.Eng., INSA Toulouse; (member of Chulalongkorn University, Thailand).

**Teerapongs Thanasuthipitak** B.Sc., Chiangmai; Ph.D., Aston; (member of Chiangmai University, Thailand).

**Andrea Tomiolo** Dott. Ing., Padova.

**Prapon Vongvichien** B.C.Eng., Chulalongkorn; M.Eng., AIT; Ph.D., Ohio State; (member of the Office of Policy and Planning, Ministry of Interior, Thailand).

**J. Scott Younger** B.Sc.(Hons.), Glasgow; M.S., California; (Assistant Project Manager, Vallentine, Laurie & Davis, Thailand).

### HUMAN SETTLEMENTS DEVELOPMENT

**Bengt L. Ageros** M.Sc., Michigan; Ph.D., Pittsburgh.

**Atikul Jamlong** B.C.A., Victoria; M.Com., Auckland; Ph.D., Cornell.

**Hans U. Luther** M.A., Ph.D., Bielefeld.

**Jacqueline M. Piper** B.A., East Anglia; M.Sc., Oxford.

**Michael Ruedenauer** Dipl.agr.oec., Dr.agr., Hohenheim.

**Somsak Tambunlertchai** Ph.D., Duke University.

**Sopin Tongpan** B.S.(Hon.), Bangkok; M.S., Oregon; Ph.D., Ohio.

**Apichart Wongkaew** B.Arch., Chulalongkorn; Dr.-Ing., Aachen; (member of the United Nations Asian and Development Institute).

### INDUSTRIAL ENGINEERING AND MANAGEMENT

**Frank H. Braun** M.A., California; Ph.D., Texas.

**Vanchai Ariyabuddhiphong** B.B.A., M.B.A., Bernard M. Baruch College, CUNY; Ph.D., the City University of New York; (Senior Vice President of Asia Credit Co., Ltd., Thailand).

**Singha Chiamsiri** B.Eng., University of Canterbury; M.Eng., AIT; Ph.D., Missouri-Columbia; (member of the National Institute of Development Administration, Thailand).

**James F. Guyot** B.A., Michigan State; M.A., Ph.D., Yale; (member of the National Institute of Development Administration, Thailand).

**Tasman A. Smith** B.A., Monash; Ph.D., Oxford.

**Weerasak Suk-anarak** M.B.A., NIDA; M.S., Ph.D., Wisconsin; (member of the National Institute of Development Administration, Thailand).

**Pornchai Tulyathan** B.Eng., Chulalongkorn; M.S., Illinois Institute of Tech.; D.Eng., AIT; (Director, Project Development Division, Board of Investment, Thailand).

#### STRUCTURAL ENGINEERING AND CONSTRUCTION

**Vithool Jearkjirm** B.Eng., Chulalongkorn; M.S., Ph.D., Purdue; (Assistant Managing Director, Thai Yong Panich Co., Ltd., Thailand).

**Buhnum Kyokong** B.Sc., Kasetsart; M.Sc., University of the Philippines at Los Banos; Ph.D., Virginia Polytechnic Institute and State University; (member of Kasetsart University, Thailand).

**Ekasit Limsuwan** B.Eng., Chulalongkorn; M.S.C.E., Houston; Ph.D., Texas; (member of Chulalongkorn University, Thailand).

**Panitan Lukkunaprasit** B.Eng., Chulalongkorn; M.S., Ph.D., California (Berkeley); (member of Chulalongkorn University, Thailand).

#### VISITING FACULTY MEMBERS

**Marc-Paul Antoine** B.Eng., Free University of Brussels; M.S., Stanford.  
Division of Industrial Engineering and Management.

**Werner Bruggeman** B.Ec., M.Ec., Ph.D., State University Ghent, Belgium.  
Division of Industrial Engineering and Management.

**William J. Chancellor** B.S.Ag., B.S.M.E., Wisconsin; M.S., Ph.D., Cornell.  
Division of Agricultural and Food Engineering.

**Roshan Lal Chauhan** B.E., Jodhpur; P.G.Dip. (Hons.); M.E.(Hons.), Ph.D., Roorkee.  
Division of Structural Engineering and Construction.

**Chandra Prakash Gupta** B.Sc.Agra; B.Tech., M.Tech., Ph.D., I.I.T.  
Division of Agricultural and Food Engineering.

**Shih-Ping Han** B.S., National Taiwan University; M.S., Ph.D., Wisconsin-Madison.  
Division of Industrial Engineering and Management.

**Devendra Kumar** B.Sc., Agra University; B.E.(Civil), Ph.D., Roorkee University, India.  
Division of Water Resources Engineering.

**J. Mondot** Ph.D., Paris University.  
Division of Energy Technology.

**Ashok K. Mittal** B.Tech., M.Tech., I.I.T., Kharagpur; M.S., Ph.D., Case Western Reserve.  
Division of Industrial Engineering and Management.

**Gerardus Balthazar Overbosch** B.S., M.S., University of Amsterdam.  
Division of Industrial Engineering and Management.

**F. Nishino** B.Eng., M.Eng., University of Tokyo; Ph.D., Lehigh.  
Division of Structural Engineering and Construction.

**F. Papini** Ph.D., Universite de Provence.  
Division of Energy Technology.

**Jacques Peters** B.S., M.Eng., Catholic University of Leuven.  
Division of Industrial Engineering and Management.

**Ping Kunawatsatit** B.Eng., Chulalongkorn; M.Eng., Kyoto; Ph.D., Purdue.  
Division of Structural Engineering and Construction.

**Bhupal Singh** B.Tech.Ag., Pantnagar; M.Sc.A.E., Indian Agr. Res. Inst., Delhi; Ph.D., New Castle-upon-Tyne.  
Division of Agricultural and Food Engineering.

**Arun Pradeep Sinha** B.Tech., I.I.T., Kharagpur.  
Division of Industrial Engineering and Management.

**G. N. Yoganarasimhan** B.Sc., and B.E. (Civil), Mysore University; M.E., Roorkee University; Ph.D., Birla Institute of Tech. & Science  
Division of Water Resources Engineering.

**Georges H. L. Vandewiele** B.Eng., M.S., State University of Ghent; Ph.D., Free University of Brussels.  
Division of Industrial Engineering and Management.

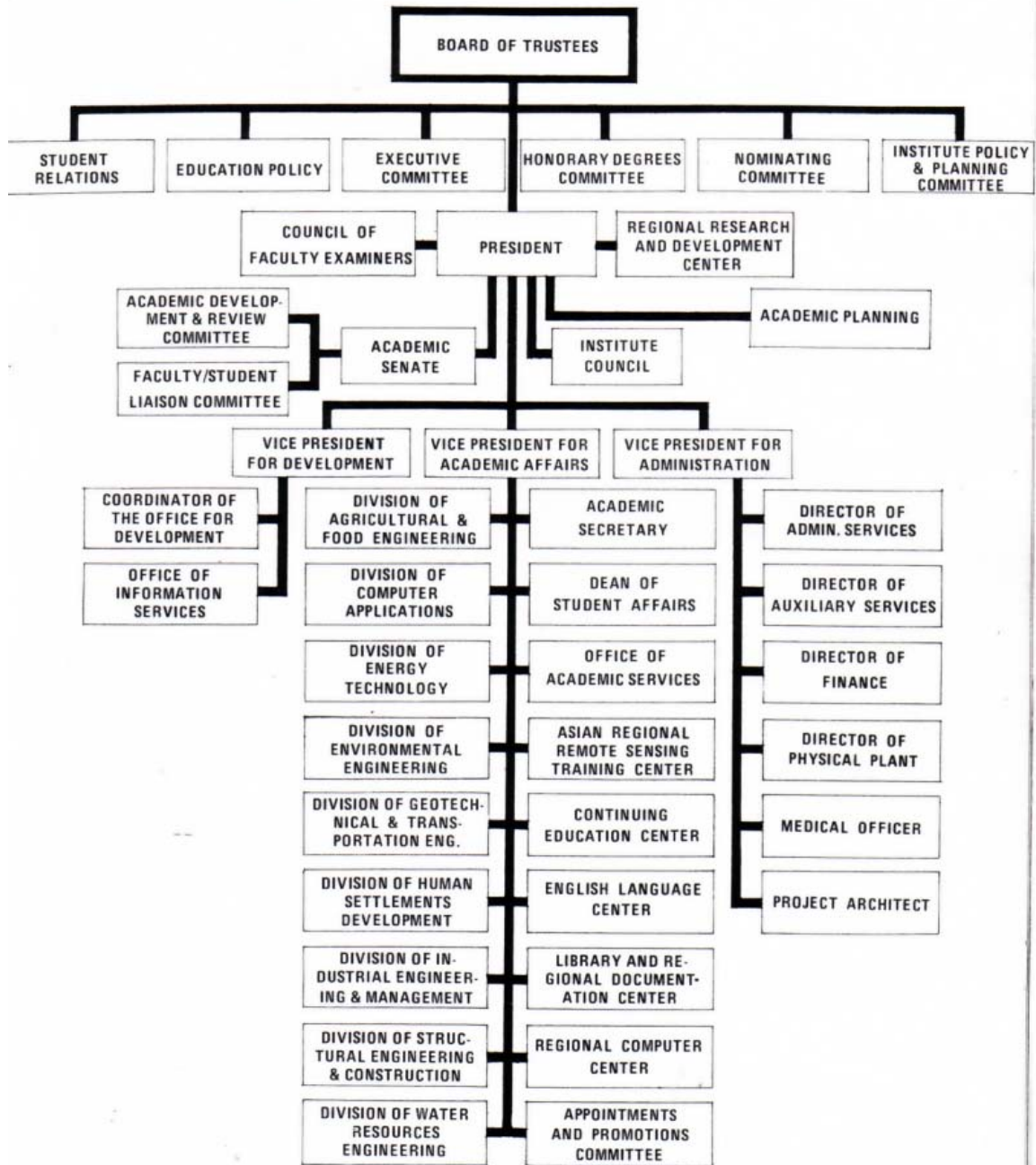
**Rameshwar Dayal Verma** B.Sc., Agra University; B.E.(Civil); M.S., University of Missouri; Ph.D., Cornell University.  
Division of Water Resources Engineering.

**Zajac Vincent** Ph.D., University of Komensky (Motor Columbus Switzerland).  
Division of Environmental Engineering.

**Tsan-Wen Wang** B.S., M.S., National Taiwan University; M.S., Colorado State University; Ph.D., South Dakota University.  
Division of Water Resources Engineering.

**L. B. Wiart** M.Sc., Paul Sabatier University; Ph.D., Toulouse University.  
Division of Energy Technology.

ORGANIZATIONAL CHART OF THE ASIAN INSTITUTE OF TECHNOLOGY



## Enrollments

Number of Students by Country in 1983

Country	January	May	September
Afghanistan	4	3	3
Bangladesh	23	30	36
Brunei	1	1	1
Burma	10	8	8
Honduras		1	1
Hong Kong	4	2	3
India	38	42 *1	36 *1
Indonesia	38	37	35
Iran		1	3
Japan	2	4	8
Korea, Republic of	14	14	15
Malaysia	32	35	36
Malawi		1	1
Nepal	21	20	23
Pakistan	27	28	28
People's Rep. of China	1	3	1
Philippines	56	55	49
Rep. of China	72	62	79
Singapore	5	11	12
Sri Lanka	46 *1	49 *1	51 *1
Tanzania		1	1
Thailand	142 *2	160 *2	166 *3
Vietnam	7	16	13
Total	546	588	614

Student Enrollments in 1983 by Academic Division

	January Term					May Term					September Term				
	Dip.	M.	D.	Oth.	Total	Dip.	M.	D.	Oth.	Total	Dip.	M.	D.	Oth.	Total
Agricultural and Food Engineering		62		1	63	62	1*1			64		32	1*1		34
Computer Applications		70	1	1	72	68	1	2	71		37	1*1	1		40
Energy Technology		55			55	52			52		40				40
Environmental Engineering	6	67*1	5		79	7	34*1	4	7	53	5	66*1	5	5	82
Geotechnical and Transportation Engineering	2	82	1	1	86	44	2		46	1	85	2			88
Human Settlements Development		38			38	5	68		73	6	69				75
Industrial Engineering and Management	1	26	6*1		34	4	52	6*1	63	3	52	5*1	1		62
Structural Engineering and Construction	1	61*1	2	1	66		35*1	2	1	39	1	68*1	1		71
Water Resources Engineering	2	32	2	1	37		70	3	8	81		67	4	8	79
PCAD – RCC				6	6				15	15				18	18
ARRSTC				10	10				31	31				25	25
Total	12	495	18	21	546	16	487	21	64	588	16	518	22	58	614

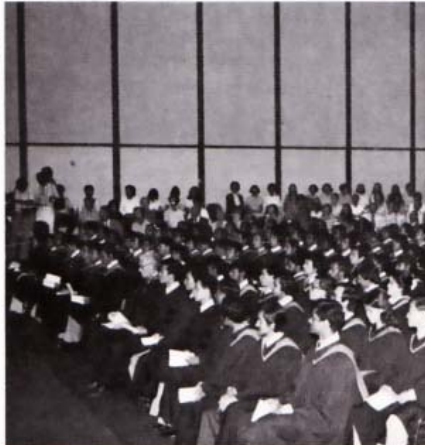
\*AIT staff enrolled in academic programs



## Graduations

During the calendar year, the Diploma of AIT was awarded to 10 individuals, and degrees were conferred upon 290 graduates. By date of Graduation, the totals were: April – 104 degrees and 5 Diplomas; August – 75 degrees and 5 Diplomas; December – 101 degrees. The smaller event in August reflected the intake into the newest Divisions which occurred in January 1982; both the Division of Computer Applications and the Division of Energy Technology were quite new two years ago. It is expected that nearly equal numbers of graduates will appear at each Graduation in subsequent years.

The doctoral program continues to be small; the end of year enrollment was 22 students, of whom three were conferred the D. Eng. or D. Tech. Sci. degree at the December 1983 Graduation. New offers of admission have been made to five registrants. The small number of doctoral scholarships available for full-time study has been a major constraint to increased doctoral enrollment. Ways to improve the situation are being explored by a committee of the faculty.



### 1983 Graduates Record

Degree	Graduation	Country																Division								Total			
		Afghanistan	Bangladesh	Burma	Hong Kong	India	Indonesia	Japan	Korea, Rep. of	Malaysia	Nepal	Pakistan	Papua New Guinea	Philippines	Rep. of China	Singapore	Sri Lanka	Thailand	Vietnam	AFE	CA	ET	EE	GTE	HSD		IEM	SEC	WRE
M. Eng.	April	1	4		2	3	7	1	2	3	6	6	9	20	10	12	1		1			22	32		1	27	2	87	
	August	1		1		8	4		2	2	4	8	3	7	7	1		20	13	9	1	1				1	1	46	
	December		3	1		9	1		5	2	2		8	3	6	17		2		2	1		1	25		27	58		
M. Sc.	April					1	1	1	1			1	2	2		9						10	5	3				18	
	August		1			3		1	2	2		3	3	1	3	6	1	9	15			2					26		
	December		4	1		2	6		1	2	1	5	6	2	2	8		1	5	1				33	1		40		
D. Eng.	August														1											1	1		
	December													1	1	1						1			2		3		
D. Tech. Sc.	August								1							1						2					2		
Dip. AIT	April		2					1	2																	2	5		
	August									3		1			1							5				2	5		
Totals		2	14	3	2	23	22	1	6	18	14	17	1	37	34	2	30	62	3	32	33	14	42	42	37	30	29	32	291

## Sponsored & Grant Research

Sponsored and grant research projects contribute to the development of the Asian region as a whole, and enable the Institute to bring some of Asia's future leaders into practical contact with real problem areas.

Sponsored and grant research fosters the identification of relevant solutions to the problems that hinder the region's growth. As well, it enhances the Institute's pre-eminence as a place of higher learning by enriching the faculty members' working experience with development offices, government agencies and planning disciplines. Often, it provides fruitful, topical areas for student research.

In addition to external sponsorship of research, AIT allocates a small sum each year to support promising research projects proposed by younger members of the faculty.

Summary of Contract and Grant Research Projects in 1983

Division/Center	Number of Projects and Total Value (US\$)			
	Completed		In Progress	
	Number	Value	Number	Value
Agricultural and Food Engineering	7	206,915	8	426,604
Computer Applications	2	308,000	2	68,279
Energy Technology	2	181,700	9	321,000 <sup>***</sup>
Environmental Engineering	1	2,000	3	708,063
Geotechnical and Transportation Engineering	3	18,592	5	104,005
Human Settlements Development	8	41,300	9	72,200
Industrial Engineering and Management	4	187,789 <sup>***</sup>	1	5,000
Structural Engineering and Construction	1	85,000	1	2,000
Water Resources Engineering	4	338,396	2	527,233 <sup>***</sup>
Asian Regional Remote Sensing Training Center	—	—	1	300,000 <sup>***</sup>
Library and Regional Documentation Center	—	—	8 <sup>**</sup>	489,300 <sup>**</sup>

<sup>\*</sup>Adjusted for projects jointly performed by two or more Divisions.

<sup>\*\*</sup>L.R.D.C. grants for various years not included in the total amount of research projects in progress.

<sup>\*\*\*</sup>Including projects under RRDC aegis.

**CONTRACT AND GRANT RESEARCH COMPLETED DURING 1983**

<b>Title</b>	<b>Sponsors</b>	<b>Principal Investigator(s)</b>	<b>Amount US\$</b>
<b>Division of Agricultural &amp; Food Engineering</b>			
1. Fertilizer and Water Management Effects on Yields, Mineral Composition, Protein Production and Protein Quality of Tropical Food Crops	Danish International Development Agency	Dr. Eppendorfer	54,933
2. Improvement and Evaluation of a Manual Soybean Seeder	International Development Research Centre, Canada	Dr. Singh	21,483
3. Rehabilitation and Development of Bung Boraped and Nong Han, Phase II	National Economic and Social Development Board, Thailand	Dr. Apichart Mr. Prida (WRE) Dr. Omura (ENV) Dr. Chongrak (ENV)	70,027
4. Rainfed Agriculture Potential of Thailand	Office of the Prime Minister, Royal Thai Government	Dr. Apichart Dr. Phien (CA)	13,216
5. Rainfall and Erosivity Study of the Lower Northern Region of Thailand	Government of Australia	Dr. Apichart Dr. Phien (CA)	44,506
6. Soil Bin Facility and Tests	Research Initiation Grant, AIT	Dr. Gee-Clough	1,500
7. Concentration of Fruit Juices by Membrane Processes	Research Initiation Grant, AIT	Dr. Kim	1,250
<b>Division of Computer Applications</b>			
1. Regional Consultancy & Information Center for Computer Supported Industrial Management	UNDP	Prof. Sharif	300,000
2. Computerized Management Information Systems for Water Supply Organization	WHO	Dr. Kanchit Dr. Lohani (ENV)	8,000
<b>Division of Energy Technology</b>			
1. Development of Low Cost Rice Dryer, Phase II	International Development Research Centre, Canada	Dr. Exell	100,000
2. Evaluation of Energy Demand and Supply in Developing Countries, Phase II	European Economic Community	Prof. Saunier Dr. Dang Dr. Sauter-Servaes	81,700
<b>Division of Environmental Engineering</b>			
1. Rational Design of Mobile Bed Radial Flow Filters	Research Initiation Grant, AIT	Dr. Vigneswaran	2,000

Title	Sponsors	Principal Investigator(s)	Amount US\$
<b>Division of Geotechnical &amp; Transportation Engineering</b>			
1. Remedial Works – 19 Storey Building, Lorong Kuda, Kuala Lumpur	Franki Piling (Singapore) Pte. Ltd.	Dr. Tomiolo Dr. Ohta	10,000
2. Geotechnical Aspects of Nam Mae Yuam Hydro-Electric Power Development Project	Electric Power Development Co. Ltd.	Prof. Balasubramaniam Prof. Yudhbir Mr. Sataporn	8,478
3. Trial Embankment	Research Initiation Grant, AIT	Dr. Prinzl	1,214
<b>Division of Human Settlements Development</b>			
1. Local Participation in Northeast	CIDA	Prof. Weber	5,500
2. Local Participation in FELDA Schemes	CIDA	Prof. Weber	6,000
3. Training Manual on Rural Development Planning	CIDA	Prof. Dias	7,000
4. The Position of Women in Low Income Residential Areas	CIDA	Prof. Weber	800
5. Planning for Integrated Development of Rural Areas: The Case of Sri Lanka	CIDA	Prof. Dias Prof. Weber Dr. Vokes	10,000
6. Monitoring and Evaluation of the Building Together Project	CIDA	Prof. Angel	5,000
7. Implementation of Low-Cost Sanitation Systems	CIDA	Dr. Nimpuno	6,000
8. The Role and Functions of Regional Centers in Thailand	CIDA	Dr. Iwami	6,000
<b>Division of Industrial Engineering &amp; Management</b>			
1. Possibilities and Problems of Research and Development Cooperation Among Countries in East and Southeast Asia	German Agency for Technical Cooperation (GTZ)	Dr. Tabucanon Dr. Tang	33,333
2. Policy Study on Agricultural Development and Related Activities	National Economic and Social Development Board, Thailand	Dr. Anat (RRDC) Dr. Tang (Team 4)	151,982
3. Public Policy Design for Economic Development	Research Initiation Grant, AIT	Dr. Saeed	1,224
4. Ambulance Services of Bangkok	Research Initiation Grant, AIT	Dr. Fujiwara	1,250
<b>Division of Structural Engineering &amp; Construction</b>			
1. Handpump Development for Rural Thailand	International Development Research Centre, Canada	Prof. Pisdhi Dr. Pichai Dr. Worsak	85,000

Title	Sponsors	Principal Investigator(s)	Amount US\$
<b>Division of Water Resources Engineering</b>			
1. Nam Chon Dam Spillway Hydraulic Model Study	Electric Power Development Co., Ltd.	Mr. Prida	28,414
2. Hydraulic Model Study of Rayong River Mouth	Sindhu Pulsirivongs & Associates, Consulting Engineers	Dr. Suphat	35,994
3. Chiew Larn Dam Spillway Hydraulic Model Study	Electricity Generating Authority of Thailand	Mr. Prida	38,358
4. Water for the Northeast; Assessment and Rehabilitation of Tank Irrigation	Royal Irrigation Department, Thailand	Mr. Prida	235,630



*Measurement of pile vibration by Geotechnical and Transportation Engineering students.*



*Solar rice dryer at the Institute's Energy Park.*



*Laboratory work by students in the Division of Water Resources Engineering.*

#### CONTRACT AND GRANT RESEARCH IN PROGRESS DURING 1983

##### Asian Regional Remote Sensing Training Center

1. Surface Water Evaluation in Northeast Thailand: A Pilot Project Using Satellite Remote Sensing	National Economic and Social Development Board, Thailand	Dr. Anat (RRDC) Dr. Atwell Dr. Kaew	300,000
---	--	---	---------

##### Division of Agricultural & Food Engineering

1. Small Scale Fishery Project in Pathumthani Province, Central Thailand: A Socio-Economic and Technological Assessment of Status and Potential	ODA, United Kingdom	Dr. Edwards Dr. Chongrak (ENV) Prof. Weber (HSD)	81,331
2. Small Scale Integrated Farm	Ministry of Foreign Affairs, The Netherlands	Dr. Edwards Dr. Apichart (RRDC) Dr. Eppendorfer Dr. Singh	39,991

Title	Sponsors	Principal Investigator(s)	Amount US\$
3. Water Resources Planning and Development for the Fifth Plan	National Economic and Social Development Board, Thailand	Dr. Singh	38,392
4. Feasibility Study of Fish-Duck Integrated Farming at the Family Level in Central and Northeast Thailand	USAID/Thailand	Dr. Edwards	21,845
5. Re-use of Human Waste (Cesspool Sludge) and Cellulose Agriculture Residues for Fish Culture, Bangkok	ODA, United Kingdom	Dr. Edwards	136,582
6. Fish Production with Composted Water Hyacinth	German Agency for Technical Cooperation (GTZ)	Dr. Edwards	40,134
7. Information System of Water Resources Development in Thailand: Phase II	Office of the Prime Minister, Royal Thai Government	Dr. Singh	66,079
8. Use of Waste-Grown Tilapia as Fish Feeds	Research Initiation Grant, AIT	Dr. Wee	2,250
<b>Division of Computer Applications</b>			
1. Agricultural Practices under Rainfed Conditions in Thailand	Office of the Prime Minister, Royal Thai Government	Dr. Phien Dr. Apichart (RRDC)	66,079
2. Character Recognition of Asian Languages	Research Initiation Grant, AIT	Dr. Vilas	2,200
<b>Division of Energy Technology</b>			
1. Evaluation and Selection of Ligno-Cellulose Waste Which Can Be Converted into Substitute Fuels	European Economic Community	Prof. Saunier Dr. Bhattacharya Dr. Islam	64,000
2. Evaluation of Energy Demand and Supply in Developing Countries, Phase III	European Economic Community	Prof. Saunier Dr. Dang Dr. Sauter-Servaes	98,000
3. Royal Orchid Hotel Solar Water Heating System Test	Italthai International Hotels, Ltd.	Prof. Saunier Mr. Bouix	5,000
4. Energy Park Operations	Government of France	Prof. Saunier	94,000
4.1 Park Maintenance and Development		Mr. Bouix Mr. Schwander	
4.2 Development of Multifuel Intermittent Ice Making Machine Appropriate for Remote Rural Areas		Dr. Reddy	
4.3 Development of a Method of Testing to Determine Solar Thermal Collector Performance		Prof. Saunier	

Title	Sponsors	Principal Investigator(s)	Amount US\$
4.4 Fluidized Bed Combustion of Agricultural Waste		Dr. Bhattacharya	
4.5 Design, Construction and Measurement of a Ventilated Window Test House		Dr. Wiart	
5. Village Size Solar Refrigerator	ODA, United Kingdom	Dr. Exell	60,000
<b>Division of Environmental Engineering</b>			
1. Preparation of the Master Plan for Rural Water Supply and Sanitation in Thailand	National Economic and Social Development Board, Thailand	Dr. Anat (RRDC) Prof. Thanh Mrs. Samorn	660,793
2. Development of Model & Computer Programs for Least Cost Design of Water Distribution and Waste-water Collection System	German Agency for Technical Cooperation (GTZ)	Dr. Orth	12,000
3. Factors Affecting the Applicability of Water Hyacinth System for Waste-water Treatment in Southeast Asia	German Agency for Technical Cooperation (GTZ)	Dr. Orth	35,270
<b>Division of Geotechnical &amp; Transportation Engineering</b>			
1. Partial Site Investigation of Proposed Nong Ngoo Hao Airport	Regional Engineering Consultants Co., Ltd.	Prof. Balasubramaniam Dr. Bergado Dr. Yamada	4,845
2. The Measurement and Monitoring of Vibration Due to Pile Driving at the Proposed Silom Palace Condominium	Concrete Products and Aggregate Co., Ltd.	Prof. Balasubramaniam Dr. Bergado Dr. Yamada	7,929
3. Investigation of Land Subsidence in AIT Campus	AIT	Dr. Bergado	6,167
4. Spatial Variability of Bangkok Subsoils	Research Initiation Grant, AIT	Dr. Bergado	1,280
5. Control of Congestion at Highly Saturated Junctions	British Science and Engineering Research Council, and Transportation & Road Research Laboratory	Prof. J.H. Jones Prof. A.D. May (Leeds Univ.) Mr. F.O. Montgomery (Leeds Univ.) Dr. P.B. Hunt (TRRL)	83,784
<b>Division of Human Settlements Development</b>			
1. Small Farm Development Issues in Northeast Thailand	CIDA	Prof. Weber	7,200
2. Building a Productive Community After Land Reform, Chumphuang	CIDA	Prof. Weber	12,500
3. Monitoring the Implementation of Production Programs in Self-Help Land Settlement Projects in Thailand	Thai-German Land Settlements Promotion Project (TG-LPP)	Prof. Weber	5,500
4. Lessons in Participatory Planning	CIDA	Prof. Dias	12,500

Title	Sponsors	Principal Investigator(s)	Amount US\$
5. Introduction of Appropriate Village Technology in Tambon Na Mai	CIDA and Canadian Embassy, Bangkok	Prof. Dias	12,500
6. The Role of Small Towns in Rural Planning	CIDA	Mr. Kammeier	5,500
7. The Chinese Shophouses in Southeast Asia	CIDA	Mr. Kammeier	5,000
8. Land Policy for Housing	CIDA	Mr. Archer	5,500
9. Development of Self-help Building Technology	CIDA	Mr. Etherington	6,000
<b>Division of Industrial Engineering &amp; Management</b>			
1. Food Policy Modeling in Thailand	Government of The Netherlands	Dr. Merkies	5,000
<b>Division of Structural Engineering &amp; Construction</b>			
1. Mechanical Properties of Prestressing Crimped Wire	Thai Special Wire Co., Ltd.	Dr. Pichai Mr. Chalot	2,000
<b>Division of Water Resources Engineering</b>			
1. Optimum Water Resources Utilization Study, Choshui River Basin	Taiwan Power Co. and Water Resources Planning Commission of ROC	Dr. Suphat Dr. Tawatchai Prof. Fude I	174,000
2. Flood Routing and Control Alternatives of Chao Phraya River for Bangkok	National Economic and Social Development Board, Thailand	Dr. Anat (RRDC) Dr. Suphat	352,423
<b>Library &amp; Regional Documentation Center</b>			
1. Regional Documentation Center (RDC)	a) Canadian International Development Agency b) Government of Australia	Dr. Valls (1983-85) Prof. Weber (HSD) Dr. Valls (1982-84)	138,000 153,000
2. International Ferrocement Information Center (IFIC)	a) Government of New Zealand b) Government of France	Dr. Valls (1983) Prof. Pama (SEC) Dr. Valls (1983) Prof. Pama (SEC)	9,600 8,700
3. Renewable Energy Resources Information Center (RERIC)	a) Government of France b) UNESCO c) USAID	Dr. Valls (1983) Dr. Exell (ET) Dr. Valls (1983) Dr. Exell (ET) Dr. Valls (1981-83) Dr. Exell (ET)	12,500 2,000 95,000
4. Environmental Sanitation Information Center (ENSIC)	International Development Research Centre, Canada	Dr. Valls (1983-85)	70,500



## Continuing Education

Twenty-five projects consisting of 66 seminars, workshops and short courses were undertaken in collaboration with the AIT Academic Divisions and external organizations. Over 2,279 participants attended these activities, some of which were held in the Philippines, Malaysia, Taiwan, Indonesia and Thailand. In-house training programs were developed and administered for five district organizations— one each in Thailand and Indonesia, and three in the Philippines. Lasting for three to four weeks, these were undertaken on a contract basis.

### 1983 PROGRAM OF ACTIVITIES

Date	Location	Title	Co-Organizers/ Sponsors	No. of Participants
1. 3 –12 Jan. 83	India	Short Course: "Construction Management Through Systems Techniques"	IEM-WRDTG/AIT	22
2. 4 – 7 Feb. 83	Thailand	Seminar-cum-Workshop: "Energy Requirements in Planning & Development of Human Settlements"	RCEHMT/UNCHS-UNESCO-COSTED	17
3. 21–25 Feb. 83	Thailand	Regional Seminar: "Flood Forecasting"	WRE-WMO/UNDP	21
4. 2–14 May 83	India	Short Course: "Groundwater Development and Management"	WRE-WRDTG/AIT	30
5. 29 May – 12 June 83	Thailand/ Indonesia	Seminar Study Tour of African Officials: "Rainwater Cisterns"	IFIC/UNESCO	8
6. 20 June – 17 July 83	Philippines	*Short Course: "Design of Communal Irrigation Systems"	WRE-GTE/NIA	40
7. 18–22 July 83	Rep. of China	Short Course: "Techniques of Flood Forecasting & Streamflow Routing"	WRE/WRPC	50
8. 5–6 Aug. 83	Philippines	3rd National Structural Engineering Convention	ASEP-GTE-IFIC	150
9. 8–12 Aug. 83	Thailand	Workshop: "Energy Development Policies for the Asian Countries"	IEM-ENV/TPC	23
10. 9-13 Aug. 83	Indonesia	Short Course: "Techniques of Flood Forecasting & Streamflow Routing"	WRE/MPW	35
11. 15–17 Aug. 83	Philippines	Short Course: "Statistical and Probabilistic Geotechnical Engineering"	GTE/ASEP	40
12. 15 Aug. – 10 Sept. 83	Philippines	*Short Course: "Design of Communal Irrigation Systems"	WRE-GTE/NIA	37
13. 26 Sept. – 30 Oct. 83	Thailand	*Short Course: "On-Farm Water Management"	WRE-AFE-CA/EEC	23
14. 10 Oct. – 5 Nov. 83	Philippines	*Short Course: "Design of Communal Irrigation Systems"	WRE-GTE/NIA	38

Date	Location	Title	Co-Organizers/ Sponsors	No. of Particip
15. 17-19 Oct. 83	Thailand	Workshop: "Application of Micro-Computers to Primary Processing of Hydrological Data"	CA-WRE/WMO	11
16. 1-13 Nov. 83	Thailand	Workshop: "Research and Technology Transfer for Asian Development"	GPC-RRDC/CDG	25
17. 7 - 18 Nov. 83	Thailand	Workshop: "Application of Micro-Computers to Hydrological Forecasting"	CA-WRE/WMO	12
18. 21-25 Nov. 83	Thailand	* Workshop: "Field Investigation & Modelling for Water Management in Estuaries & Deltas"	CA-WRE/WMO	22
19. 22 Nov. - 5 Dec. 83	Thailand	Workshop: "Project Management for Industrial Estate" for Indonesians	GPC-TIESCO/CDG	5
20. 6-16 Dec. 83	Thailand	Second Asian School: "Solar Energy Harnessing"	ET-KMIT/UNESCO- ICTP-AFME	30
21. 13-15 Dec. 83	Malaysia	Short Course: "Structural Design of Tall Buildings"	SEC-GTE/UNESCO -USM	64
22. 19-21 Dec. 83	Philippines	Short Course: "Structural Design of Tall Buildings"	SEC-GTE/UNESCO -MSU	54
23. Jan. - Dec. 83		*Water Resources Development Training for Thai Government Officials		
	Chiang Mai Nakorn Pathom Songkhla	} 16 of 10-12 day Training Course	Chiang Mai University Kasetsart University Prince of Songkhla University	720
	Kon Kaen Chiang Mai Nakorn Pathom Songkhla	} 23 of 3 day Roving Seminar	Khon Kaen University Chiang Mai University Kasetsart University Prince of Songkhla University	920
*Contract in-house training courses				
<b>Other Independently Organized Seminars</b>				
25-28 Jan. 83	Thailand	Workshop: "Solar Rice Dryers"	IDRC/AIT	30
2 May - 27 June 83	Thailand	Training Program: "Ferrocement Technology"	US-ASEAN	8
18 April - 13 May 83	Sri Lanka	Training Course: "Rural Development Planning"	CIDA/NORAD	22
22 Aug. - 15 Oct. 83	Thailand	Training Program: "Applied Quaternary Geology"	Delft University of Technology, the Netherlands Government, UNESCO, AIT AGID.	28
6-16 Dec. 83	Thailand	Symposium & Short Course: "Recent Developments in Laboratory and Field Tests and Analysis of Geotechnical Problems."	AGID/AIT	300

## Other Developments

### ESTABLISHMENT OF THE INSTITUTE POLICY AND PLANNING COMMITTEE

The Institute Policy and Planning Committee, proposed and approved during the 1983 Annual Meeting of the Board of Trustees, is responsible for the preparation of the Institute's rolling triennial plan focussing on the following major areas :

- \*Organization and development of the Institute;
- \*Current and projected student, faculty and staff numbers;
- \*Capital program (buildings and equipment);
- \*Recurrent and capital costs; and
- \*Funding program.

This annually-revised triennial plan is presented to the Board through the Executive Committee.

The Committee, chaired by the President of AIT, consists of two members of the Board of Trustees, the Vice President for Academic Affairs, the Faculty Representative to the Board of Trustees, and five members of the Academic Senate duly elected by and from among the members of the Academic Senate. In addition, the Vice President for Administration and the Vice President for Development attend and participate in discussions but they have no voting rights.

The Committee reports to the Executive Committee on all matters having policy and planning implications.

The administration of an institute as unique and diversified as AIT in its sources of funding, students and staff, is especially challenging. The establishment of the Policy and Planning Committee is an important step towards developing a responsive and responsible administrative set up that is both flexible and efficient.

### NEW APPOINTMENTS IN THE ACADEMIC ADMINISTRATION

The following appointments have been made in the academic administration with effect from November 1983. Mr. W.P. Abeydeera has been appointed Academic Planning Officer responsible to the President in carrying out the wishes of the Board of Trustees and the Institute Policy and Planning Committee with respect to forward planning in the Institute.

Appointed to Mr. Abeydeera's former position as Academic Secretary is Mrs. Emilie Ketudat. Mrs. Ketudat will be responsible for the Registry and the provision of an academic secretariat. She formerly held the position of Coordinator of the Office for Development.

Mrs. Rosario Saiphong, formerly Assistant Academic Secretary, has been promoted to a new position as Head of Registry.

### ESTABLISHMENT OF THE REGIONAL FARMAP TRAINING CENTER FOR ASIA AND THE PACIFIC

Established as a joint undertaking by the Food and Agriculture Organization (FAO) and AIT, the Regional FARMAP Training Center for Asia and the Pacific is housed in the Institute's Regional Computer Center. Its objective is the transfer of technology to improve farming systems data collection, processing and analysis in the region. Since its establishment in April 1983, the center has trained 36 development workers from Thailand, Nepal, Indonesia and the Philippines.

The FARMAP training program follows a practical format. Following basic training in data collection and computer application, trainees develop their own questionnaires using coding based on the FARMAP concept. Data storage, validation, tabulation, and analysis are intensively practised.



*FARMAP-trained enumerators gather field data for a national farm management study in Kathmandu Valley in Nepal.*

### AIT PARTICIPATION IN THE THIRD TECHNOLOGY FOR THE PEOPLE FAIR

For the third consecutive time, the Swiss Government has supported the participation of AIT in the Technology for the People Fair, most recently held in Manila in November 1983. As in the two previous fairs, held in 1980 in Geneva and in Mexico in 1981, the Institute's exhibit consisted of AIT-developed technologies, such as the solar rice dryer, water filtration unit and various ferrocement designs.

The AIT team in the 1983 fair was composed of Dr. Chongrak Polprasert, an Associate Professor in the Environmental Engineering Division; Mrs. Lilia Robles-Austriaco, a Senior Information Scientist at the International Ferrocement Information Center; and Mr. Peter Swan, Coordinator of the Offices of Academic and Information Services.

In particular there were many inquiries about ferrocement and its varied applications. The diverse range of people visiting the AIT booth also showed keen interest in the energy park model, the slow sand water filtration unit and the manual soybean seeder. Based on a research project funded by the International Development Research Center, the new manual soybean seeder has been developed by the Division of Agricultural and Food Engineering.

The AIT delegates reported that technologies developed by the Institute are well accepted throughout the region.

### DEVELOPMENTS IN STUDENT AFFAIRS

#### Appointment of a Full Time Dean of Student Affairs

Originally, the dual responsibilities of Dean of Student Affairs and Academic Secretary were held by one administrative appointee. However, as the Institute has expanded considerably in recent years the increased workloads have necessitated the separation of these responsibilities.

The Dean of Student Affairs is the students' counsellor in both academic and personal matters. The Dean also serves in the Faculty/Student Liaison Committee, and is the key person to provide a formal channel of communication between the student body and the faculty.

Mrs. Hilary Wongkaew, the current Dean of Student Affairs, assumed her position in January 1983.

#### Student Union Service Fund

The Student Union Service Fund was initiated by the Student Union (SU) in September 1983 as a supplementary source of financial assistance for needy students. The fund, patterned after similar funds in other universities, has been created by SU to extend small, short-term loans to needy students. It depends on contributions from donors.

As contributions to the fund increase, financial assistance will also be extended to the support of worthwhile extracurricular student activities on campus.

The Student Union is composed of all registered



*The low cost building system developed by AIT Associate Professor A.B. Etherington under a grant from CIDA has been widely used in the region. In Capiz province in the Philippines, the system has been adapted to suit cyclone prone conditions in the area and is now used in the construction of school buildings and village housing.*

*Capiz Governor Cornelio Villareal, Jr. is photographed showing the modified blocks to Canadian Ambassador to the Philippines, H.E. Mr. Edward Bobinski.*

students at AIT. They are represented in the Union's General Assembly by a body of elected officers representing all national groups in the student body from which the President and Secretary/Treasurer of the Union are chosen. The President then appoints the members of the Executive Committee who constitute an active working group. They are responsible for the planning, scheduling and organization of almost all student activities on campus.

In addition to the newly created Student Union Service Fund, SU's other activities cover both cultural and academic matters.

The Student Union conducts a coursework evaluation scheme and also makes representations in the Faculty/Student Liaison Committee and Academic Senate. Among the cultural events organized by SU is the annual "Cultural Show" in which the various national groups at AIT participate.

#### Election of the Student Union's First Lady President

During the September 1983 term, the Student Union elected its First Lady President, Ms. Sureerut Butsapuk, a student in the Division of Environmental Engineering. Ms. Sureerut will carry out her duties with the assistance of the 32-member General Assembly of the Student Union.

## Campus & Physical Plant

The following Departments and Units report to the Vice President for Administration: Administrative Data Processing, Administrative Services, Auxiliary Services, Accounts & Control, Internal Auditor, Medical Service, Physical Plant, and Project Architect.

An Internal Auditor has been appointed under a secondment by the Australian Government. Mr. Jim Lowth will be with the Institute until mid-1984 to establish an internal audit function.

### ENERGY CONSERVATION

The energy conservation program remained active throughout the year. The review of major adjustments to the air-conditioning systems and the redesigning of the electrical system were completed.

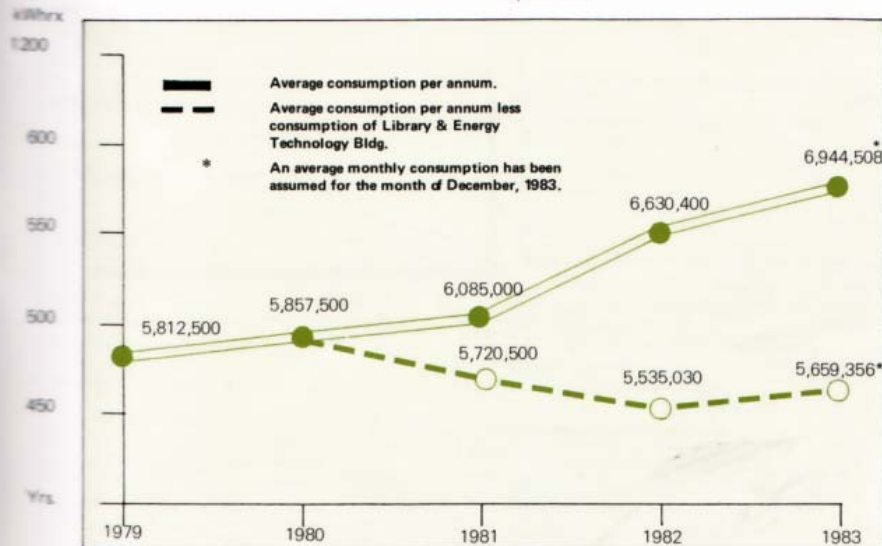
The graph below illustrates the current consumption figures.

### CAPITAL PROGRAM

In May 1983 the \$494,000 extension of the Engineering Experimental Station funded by the Government of the Republic of China commenced and is expected to be completed in May 1984. Extensive rebuilding of the area occupied by the Registry was completed in November at a cost of \$50,000. The reconstruction was necessary following subsidence problems resulting in major structural damage to the walls, floors and the covered walkway. A contract for the construction of the Energy Technology Building II, which is being funded by the Government of France at a cost of about \$400,000, was signed in December. The Thai Chapter of the Alumni Association contributed \$5,200 towards the cost of an Entrance Sign on the highway. A new Police Box was also constructed as part of the project and the general area will be landscaped. The total cost of the project is \$12,000.

### ADMINISTRATIVE DATA PROCESSING UNIT

The Administrative Data Processing Unit, now in existence for two years, implemented four additional applications: payroll, student finance, utility and sponsored funds. The work undertaken during the past two years has meant a net saving of 1,153 man hours per month, which has resulted in the cancellation of three clerical positions and the reclassification of another three positions within the Accounts Department.



The Electricity Consumption Pattern of AIT Since 1979

While redundancies resulting from the introduction of data processing have so far been absorbed by retraining and reclassification, a much more active retraining program will need to be introduced unless involuntary retrenchments are to be accepted. A policy will need to be implemented throughout the Institute whereby any non-faculty vacancy that occurs is filled, as a first priority, from among those whose positions are likely to become redundant and, if necessary, the member of staff nominated will be retrained to suit the vacancy. Such a policy will require the willing cooperation of all Divisions, Centers and Units.

The accounting software (IBM F/BACIS) has been successfully installed and two programmers were trained for administrative applications. Three clerical staff were trained for the data entry function.

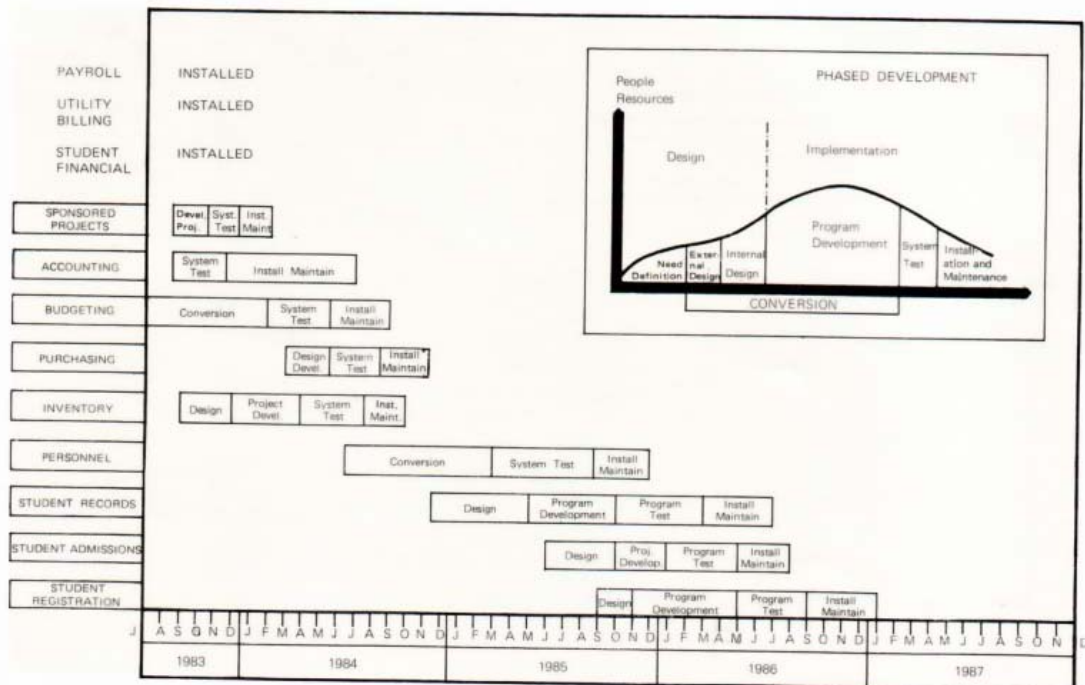
Major systems to be introduced during 1984 are Accounting, Budgeting, Purchasing and Inventory. These will be followed by Personnel, Student Records, Admissions and Registration.

The extensive introduction of mini and micro computers throughout the Institute over the next year or two will make automation of many administrative functions attractive and practical. In addition to the financial implications, the social and internal organizational implications of this development in a country where unemployment is already high should be carefully examined.

The following chart sets out the plans for the next three years:



Staff training in the use of data processing in many administrative functions.



## Donor Relations

During the fiscal year 1982-1983, the Institute received US\$11,484,194 in cash and in-kind contributions from 24 governments, 11 international organizations, nine foundations, 23 national government agencies and 20 business enterprises or a total of 87 donors. The grants came in nine different forms and are summarized below:

Types of Grant	Cash	Kind	Total
Scholarships	4,706,584	-	4,706,584
Research Projects	1,185,929	-	1,185,929
Continuing Education	628,042	-	628,042
Capital Grants/Buildings	1,460,140	-	1,460,140
Equipment	107,468	406,876	514,344
Endowment Fund	173,822	-	173,822
Operating Grant	496,648	-	496,648
Faculty Secondment	469,386	1,067,133	1,536,519
Local Funds/Others	782,166	-	782,166
	US\$ 10,010,185	1,474,009	11,484,194

### GOVERNMENTS

#### 1. Australia

The Government of Australia presented the Institute with a grant of A\$1.5 million. This grant is part of the A\$4.0 million which the Government of Australia intends to contribute to AIT for the period 1983-1985. The grant will be used for scholarships, staffing assistance and support for the Library and Regional Documentation Center.

#### 2. Austria

The Republic of Austria contributed 12 man-months of faculty secondment to the Institute.

#### 3. Bangladesh

The Government of Bangladesh made another contribution of Taka 250,000 for use in supporting academic related activities by AIT faculty and students in Bangladesh.

#### 4. Belgium

The Royal Government of Belgium provided a grant of US\$125,000.00 for scholarships and 25 man-months of faculty secondment. It also approved AIT's request for two more faculty secondments. One of the two experts has already been identified and an offer of appointment has been made, while the other position is yet to be filled.

#### 5. Canada

The Canadian International Development Agency (CIDA) signed a new Memorandum of Understanding (MOU) with AIT. The new MOU provides for a total grant of Cdn\$3.81 million over the period January 1, 1983 to December 31, 1986 to support the activities of the Divisions of Agricultural and Food Engineering, Energy Technology, Human Settlements Development, Water Resources Engineering and the Library and Regional Documentation Center. The new MOU provides grants for the following activities:

Scholarships (120 over 3 years)	= Cdn\$ 2,232,000
Faculty and Staff Support	591,840
Demonstration and Dissemination Projects	270,000
Continuing Education Projects	144,000
Program Support	72,000
Student Research	254,400
Contingency for Inflation	245,760

During this fiscal year, the Government of Canada remitted a total of US\$740,000 to the Institute.

#### 6. China, Republic of

The Government of the Republic of China made a cash grant of US\$372,000 for scholarships and another grant of US\$494,000 for the extension of the Engineering Experimental Station. In addition, 12 man-months of faculty secondment were also provided.

#### 7. Denmark

The Royal Government of Denmark contributed US\$150,000 for scholarships and 23 man-months of faculty secondment. Another faculty position has been pledged by DANIDA and the recruitment for the most suitable candidate for this post is underway.

#### 8. France

The Republic of France continues to support the Institute by providing grants for scholarships, research projects, continuing education activities, building, operating cost, faculty and staff secondments. This year a cash grant of US\$430,000 was received plus 68 man-months of faculty and staff secondments as in-kind support.

#### 9. Germany, Federal Republic of

The Government of the Federal Republic of Germany through its agencies, CDG, DAAD, GTZ and DSE made a total cash grant of US\$1,672,000 for scholarships, research projects, continuing education activities, building and equipment. In addition, 60 man-months of faculty and staff secondments were provided as in-kind support.

**10. India**

The Government of India provided 18 man-months of faculty under a short-term secondment program. A grant of Rs 200,000 was also provided for use in organizing academic related activities in India by AIT faculty, staff and students.

**11. Indonesia**

The Government of Indonesia made another grant of US\$34,000 to the Endowment Fund of the Institute.

**12. Italy**

Three man-months of faculty secondment were provided by the Government of Italy. A new proposal for scholarships and equipment for a five-year period, amounting to US\$1.35 million plus 10 man-years of faculty secondment, has been submitted to the Italian Government.

**13. Japan**

The Government of Japan continues to provide support to the AIT in the form of faculty secondment, scholarship grant, equipment grant and operating grant. A sum of US\$588,000 was presented to the Institute plus Yen 70.7 million for equipment acquisition. The Government of Japan also contributed 83 man-months of faculty secondment.

**14. Korea, Republic of**

The Government of the Republic of Korea made a further contribution of US\$ 130,000 to the Endowment Fund of the Institute.

**15. Netherlands**

The Royal Netherlands Government made a grant of US\$580,000 for scholarships, Asian faculty support, research projects, acquisition of books, and 10 man-months of faculty secondment as in-kind support.

The Ministry of Development Cooperation has recently approved the ISS/AIT Project of International Education and Research in Rural and Regional Development Planning. This 3½-year project will receive a total grant of Dfl 3.9 million.

The Ministry of Development Cooperation has also approved in principle AIT's request for Asian faculty support. A grant of Dfl 1.0 million over a three-year period has been earmarked in principle.

**16. New Zealand**

A cash grant of US\$69,000 was provided by the Government of New Zealand for scholarships and for support of the International Ferrocement Information Center (IFIC).



*Belgian Government scholarship presentation by the former First Secretary of the Royal Belgian Embassy in Bangkok, Mr. Raphael van Hellemont.*

*Canadian Government scholarship by the former Canadian Ambassador to Thailand, H.E. Mr. Fred Bild (center) to former AIT President Robert Banks (right).*

*German Government scholarship grant presented by the German Ambassador to Thailand, H.E. Dr. J.C. Lankes (right) to AIT President Alastair North.*





*Presentation of the Royal Thai Government King's Scholarships by His Royal Highness Prince Vajiralongkorn in behalf of His Majesty King Bhumibol Adulyadej.*

*Japanese Government scholarship presentation by former Japanese Ambassador to Thailand, H.E. Mr. Motoo Ogiso (left).*

*Swiss Government scholarship presentation by the Swiss Ambassador to Thailand, H.E. Mr. Walter Rieser.*

#### 17. Norway

The Royal Government of Norway made a grant of US\$276,000 for scholarships.

A new proposal "Strengthening the Computer Education and Computer Capability of the Asian Institute of Technology" has been presented to Norway for consideration. The amount requested over the five-year period is US\$6 million. The grant is intended to finance 15 man-years of faculty secondment in the Division of Computer Applications, acquisition of a number of microcomputers and associated software, maintenance and training of AIT staff. It is expected that a final decision on this project will be made in early 1984.

#### 18. Philippines

The Republic of the Philippines made a further grant of US\$24,000 to the Institute.

#### 19. Sri Lanka

The Government of Sri Lanka continues to provide the Institute with Rs 100,000 grant for the use of AIT faculty, staff and students in Sri Lanka.

#### 20. Sweden

The Royal Government of Sweden through its agency, SAREC, made a grant of US\$49,000 for a special short-term training program of Vietnamese students.

#### 21. Switzerland

The scholarship program of the Institute received another grant of US\$80,000 from the Government of Switzerland. Twelve man-months of faculty secondment were also contributed and the Swiss Government is presently recruiting the second expert to be seconded to AIT.

#### 22. Thailand

The Royal Thai Government made a total cash grant of US\$1,154,000 for scholarships, construction, operating cost and tax reimbursement.

#### 23. United Kingdom

The Government of the United Kingdom provided 64 man-months of faculty secondment and a cash grant of US\$150,000 for research projects and for the acquisition of books.

#### 24. United States of America

The Government of the United States of America made a cash grant of US\$1,332,000 for scholarships, research projects, continuing education activities and equipment. In addition, it supported 67 man-months of faculty secondment in Remote Sensing and Energy Technology.

#### INTERNATIONAL ORGANIZATIONS

1. Agencies of the United Nations Organization such as ESCAP, FAO, IBRD, ICTP, Mekong Secretariat, UNCHS, UNDP, UNESCO, WHO and WMO made grants totalling US\$340,000.
2. The European Economic Community (EEC) made a grant of US\$211,000 for scholarships, research projects and seminars. It also supported 23 man-months of faculty secondment.

#### FOUNDATIONS

1. The AIT Foundation Inc. has channelled the financial support of IBM-AFE and the Starr Foundation to the Institute. In FY1982-83, a total grant of US\$235,000 was given to AIT.
2. The AIT-UK Appeal Fund has presented the Institute with a grant of US\$87,000 solicited from Shell International Petroleum Co. Ltd. This grant is used to support one faculty member in Energy Technology.
3. The Ford Foundation, Inc. made a grant of US\$8,000 for scholarship purposes.
4. The International Development Research Center (IDRC) of Canada contributed US\$67,000 for seminars, scholarships and for research projects.
5. The Lee Foundation made another grant of US\$35,000 for scholarships.
6. KEIDANREN of Japan provided US\$65,000 for scholarships.
7. Okumenisches Studienwerk, e.v. West Germany supported the scholarship program with a grant of US\$12,000.
8. The Rockefeller Foundation made a grant of US\$2,000.
9. The U.S. National Academy of Sciences supported three man-months of faculty secondment at the Institute.



*US Ambassador to Thailand, H.E. Mr. John Gunther Dean (left) with former AIT President Robert Banks and AIT Vice President for Development, Dr. Ricardo Pama.*

*Mr. John Hansen, Head of Delegation of the Commission of the European Community for Southeast Asia, presenting EEC scholarships to AIT students.*

#### NATIONAL GOVERNMENT AGENCIES

Several government agencies of the Royal Thai Government and other similar agencies in Korea, Indonesia, Malaysia and the United Kingdom provided scholarships and sponsored numerous research projects at the Institute. A total of US\$770,000 was received from 23 such agencies.

#### BUSINESS, PRIVATE AND OTHERS

1. A total of 18 business enterprises contributed US\$638,000.
2. The Marden Family in Hong Kong continues to support the scholarship program with a grant of US\$16,000.
3. Professor Y. Hisamatsu contributed US\$10,000.

**Table 1**  
**CONTRIBUTIONS IN CASH AND KIND**  
**FY 1982 - 83**

<b>GOVERNMENTS</b>		<b>Percentage ( % )</b>	<b>NATIONAL GOVERNMENT AGENCIES</b>		<b>%</b>
Australia		1.50	Bank of Thailand		0.13
Austria		0.16	Dept. of Technical & Economic Cooperation, Thailand		0.09
Bangladesh		0.10	Electricity Generating Authority of Thailand		0.07
Belgium		1.42	Imperial College of Science & Technology, U.K.		0.01
Canada		6.46	International Road Federation, U.S.A.		0.03
China, Republic of		7.82	Korea National Housing Corporation		0.04
Denmark		1.63	Hasanuddin University, Indonesia		0.13
France		4.64	Malayan Agricultural Research & Development		0.01
Germany, Federal Republic of		15.47	Metropolitan Waterworks Authority, Thailand		0.04
India		0.46	National Economic and Social Development Board, Thailand		1.03
Indonesia		0.30	National Environment Board, Thailand		0.46
Italy		0.06	National Irrigation Administration, Philippines		0.20
Japan		2.33	Petra Christian University, Indonesia		0.11
Korea, Republic of		1.13	Provincial Waterworks Authority, Thailand		0.06
Norway		2.40	Prime Minister's Office, Thailand		3.11
Netherlands		5.20	Royal Irrigation Department, Thailand		0.72
New Zealand		0.60	Royal Thai Air Force		0.27
Philippines		0.21	Royal Thai Army		0.03
Sri Lanka		0.04	Supreme Command Headquarters, Thailand		0.02
Sweden		0.43	Royal Thai Navy		0.04
Switzerland		0.89	Syah Kuala University, Indonesia		0.05
Thailand		10.05	University of Indonesia, Indonesia		0.03
United Kingdom		2.25	Universiti Teknologi, Malaysia		0.02
United States of America		12.68			
<b>Sub-total</b>		<b>78.23</b>	<b>Sub-total</b>		<b>6.70</b>
<b>INTERNATIONAL ORGANIZATIONS</b>		<b>%</b>	<b>BUSINESS, PRIVATE AND OTHERS</b>		<b>%</b>
EEC		2.14	BES Engineering Corp., ROC		0.27
ESCAP		0.34	Chinese Petroleum Corp., ROC		0.27
FAO		0.25	Electric Power Development Co., Ltd., Japan		0.21
IBRD (World Bank)		0.14	Kubota Ltd., Japan		0.27
ICTP		0.06	P.T. Caltex Pacific, Indonesia		0.05
Mekong Secretariat		0.03	Far East Laboratory Ltd., Japan		0.04
UNOHS		0.16	Matsushita Electric Trading Co., Japan		0.03
UNDP		0.78	3 M Thailand Ltd.		0.00
UNESCO		0.36	Penta Ocean Construction Co., Japan		0.13
WHO		0.32	RET-SER Engineering Agency, ROC		0.40
WMO		0.21	Salzgitter Consult GmbH, Germany		0.43
<b>Sub-total</b>		<b>4.79</b>	Shell Company of Thailand		0.05
<b>FOUNDATIONS</b>		<b>%</b>	Shell International, U.K.		1.09
A.I.T. Foundation Inc./IBM-AFE		2.50	Siam Cement Co., Ltd., Thailand		0.03
AIT UK Appeal Fund/Shell International		0.75	Sindhu Pulsirivongs Ltd., Thailand		0.07
Ford Foundation		0.07	United Engineering (Malaya) Ltd., Malaysia		0.02
IDRC		0.58	Taiwan Cement Corp., ROC		0.27
KEIDANREN, Japan		0.57	Taiwan Power Co., ROC		1.47
Lee Foundation		0.31	Professor Y. Hisamatsu, Japan		0.09
Ökumenisches Studienwerk, Germany		0.11	Marden Family, Hong Kong		0.13
Rockefeller Foundation		0.02			
U.S. National Science Foundation		0.05	<b>Sub-total</b>		<b>5.32</b>
<b>Sub-total</b>		<b>4.96</b>	<b>Total</b>		<b>100</b>

Table 2

**TOTAL CONTRIBUTIONS RECEIVED  
IN CASH AND IN KIND**

FY 1959 - 60 to FY 1981 - 83

DONORS	Percentage ( % )
Australia	4.87
Austria	0.04
Bangladesh	0.03
Belgium	0.89
Canada	5.73
China, Republic of	3.87
Denmark	1.19
France	1.68
Germany, Federal Republic of	7.28
Hong Kong	0.00
India	0.10
Indonesia	0.08
Iran	0.01
Israel	0.09
Italy	0.25
Japan	12.31
Korea, Republic of	0.43
Netherlands	3.13
New Zealand	1.11
Norway	0.81
Pakistan	0.11
Philippines	0.31
Sri Lanka	0.01
Sweden	0.05
Switzerland	0.67
Thailand	13.08
United Kingdom	6.23
United States of America	17.20
Vietnam	0.01
International Organizations	1.85
Foundations	7.55
National Government Agencies	5.36
Business, Industries, Private & Others	3.67
<b>Total</b>	<b>100.00</b>

**SCHOLARSHIP CONTRIBUTIONS  
For AIT Internally Selected Candidates**

DONOR	Number of Scholarships	
	1982 - 83	1983 - 84 (Projection)
<b>I GOVERNMENT</b>		
Australia	35	35
Belgium	7	6
Canada/BBD	40	40
Canada/HSD	7	-
Denmark	8	10
France	7	12
Germany, Federal Republic of		
DAAD - Master's	13	30
DAAD - 'Sandwich' Doctoral	-	1
Japan - Master's	15	16
- Doctoral	9	10
Netherlands - SIR	15	15
- ISS	-	3
New Zealand	5	4
Norway	15	10
Switzerland	6	8
Thailand (King's)	8	10
<b>Sub-total</b>	<b>190</b>	<b>210</b>
<b>II FOUNDATIONS</b>		
A.I.T. Foundation, Inc., U.S.A.		
- Robert S. Smith Scholarship	1	-
- Starr Foundation	1	1
KEIDANREN, Japan	4	4
Lee Foundation, Singapore	3	3
<b>Sub-total</b>	<b>9</b>	<b>8</b>
<b>III INDUSTRIES</b>		
BES Engineering Corporation, R.O.C.	2	2
Caltex Oil (Thailand) Ltd.	1	-
China Technical Consultants Inc., R.O.C.	2	1
Chinese Petroleum Corporation, R.O.C.	2	2
Kubota, Ltd., Japan	2	-
Philips Electrical Co. of Thailand Ltd.	1	-
Ret-Ser Engineering Agency, R.O.C.	1	1
Shell International Petroleum Company	4	4
Siam Cement Co., Thailand	1	-
Taiwan Cement Corporation, R.O.C.	1	1
Taiwan Power Company, R.O.C.	2	2
<b>Sub-total</b>	<b>19</b>	<b>13</b>

#### IV INDIVIDUALS AND OTHERS

Dorothy Marden, Hong Kong	1	—
George Marden, Hong Kong	—	1
European Economic Community	10	5
Sub-total	11	6
<b>TOTAL</b>	229	237

#### For Externally Nominated Candidates at AIT

DONOR	Number of Scholarships	
	1982-83	1983-84 (Projection)
<b>I GOVERNMENT</b>		
France/Vietnamese	1	—
Germany, Federal Republic of		
DAAD - Countries Restricted	—	50
DAAD - Provincial Waterworks Authority **	—	9
DAAD - Royal Irrigation Department**	3	—
DAAD - Tanzania	—	1
Carl Duisberg Gesellschaft e.V.	48	23
OSE	—	1
China, Republic of - Master's	29	25
- Doctoral	1	—
United States of America		
Aid - ASEAN	11 + 17C	26 + 23C
Aid - IADS/Bangladesh	—	3
Aid - IADS/Indonesia	—	1
Aid - RMI/Indonesia	—	+ 2C
Sub-total	93 + 17C	139 + 25C

#### III U.N. AGENCIES

UNDP - Afghanistan	—	+ 1C	—
UNDP - Bangladesh	—	+ 5D	— + 1D
UNDP - FAO	1	+ 1D + 1C	— + 1D
UNDP - WMO	—	+ 1C	— +
WHO	2	+ 3D	— + 4D + 1C
Sub-total	3	+ 9D + 3C	— + 6D + 1C

#### III FOUNDATIONS

International Development Research Centre, Canada	1	—
International Road Federation, U.S.A.	—	+ 1C
Sub-total	1	+ 1C

#### IV INDUSTRIES

Penta-Ocean Engineering Co., Japan	1	—
Ret-Ser Engineering Agency, R.O.C.	1	—
Siam Cement Co., Thailand	—	1
Sub-total	2	1

#### V NATIONAL GOVERNMENT ORGANIZATIONS

Bank of Thailand	1	—
Dept. of Technical Economic Cooperation, Thailand	2	— + 2D + 4C
Korea National Housing Corporation	—	+ 1D
Petra Christian University, Indonesia	1	—
Royal Thai Air Force	2	—
Royal Thai Army	1	—
Supreme Command Headquarters, Thailand	1	—
Syiah Kuala University, Indonesia	1	—
Universiti Teknologi, Malaysia	—	+ 1C
World Bank Education Project, Indonesia	3	—
World Bank Hydrology Project, Indonesia	2	— + 1C
Sub-total	14	+ 1D + 1C — + 2D + 5C
<b>TOTAL</b>	113	+ 10D + 22C 140 + 8D + 31C
<b>GRAND TOTAL</b>	342	+ 10D + 22C 377 + 8D + 31C

\*D = Diploma

C = Certificate

\*\* Thailand

## Alumni Relations

### ALUMNI RECORD

There were three graduation ceremonies in 1983: April 22, August 19 and December 16. The number of AIT graduates as of the Thirty-ninth Graduation on December 16, 1983, totalled 2,955 from 29 countries.

### DISTRIBUTION BY DIVISIONS

Division	M.Eng.	M.Sc.	D.Eng.	D.Tech. Sc.	Diploma	TOTAL	%
Agricultural and Food Engineering	150	37	2	—	18	207	7.0
Computer Applications	51	59	—	—	5	115	3.9
Energy Technology	44	4	—	—	3	51	1.7
Environmental Engineering	233	87	10	2	17	349	11.8
Geotechnical and Transportation Engineering	438	47	4	—	23	512	17.3
Human Settlements Development	21	168	—	—	8	197	6.7
Industrial Engineering and Management	234	20	12	—	11	277	9.4
Structural Engineering and Construction	448	1	18	—	6	473	16.0
Water Resources Engineering	484	8	10	2	48	552	18.7
*Community and Regional Development	61	35	4	—	—	100	3.4
*System Engineering and Management	106	8	1	—	7	122	4.1
TOTAL	2,270	474	61	4	146	2,955	
%	76.8	16.1	2.1	0.1	4.9		100 %

*\*Discontinued in 1974 to become the Divisions of Human Settlements Development and Industrial Engineering and Management, respectively.*

**DISTRIBUTION BY COUNTRY**

Country	Number	Percentage
Afghanistan	17	0.57
Bangladesh	262	8.87
Brunei	4	0.14
Burma	12	0.41
Canada	1	0.03
China, Republic of	395	13.37
Ghana	2	0.07
Hong Kong	54	1.83
India	189	6.40
Indonesia	130	4.40
Iran	8	0.27
Japan	14	0.47
Kampuchea	3	0.10
Korea, Republic of	35	1.18
Laos	1	0.03
Macao	5	0.17
Malaysia	137	4.64
Nepal	66	2.23
Pakistan	221	7.48
Papua New Guinea	4	0.14
Philippines	311	10.52
Singapore	21	0.71
Sri Lanka	209	7.07
Tanzania	1	0.03
Thailand	799	27.04
Turkey	6	0.20
United Kingdom	2	0.07
United States of America	3	0.10
Vietnam	43	1.46
<b>TOTAL</b>	<b>2,955</b>	<b>100 %</b>

**REPORT OF THE AIT ALUMNI ASSOCIATION**

**ALUMNI CHAPTER**

There are now 14 AITAA Chapters, as follows :

Bangladesh	Brunei	Hong Kong/Macao	Indonesia
Japan	Korea	Malaysia	Nepal
Pakistan	Philippines	Rep. of China	Singapore
Thailand	U. S. A.		

Two chapters---- Nepal and Brunei ---- were formed in 1983.

The Nepalese Chapter elected the following officers:

1. Mr. Laxman Prasad Ghimire (CO-72)  
President
2. Mr. Kalyan Bahadur Pradhan (IE-79)  
Vice President
3. Mr. Amar Bahadur Manandhar (IE-82)  
Secretary/  
Treasurer
4. Mr. Kamal Rijal (ET-82)  
Auditor
5. Mr. Madan Krishna Manandhar (HS-82)  
Press Relations  
Officer



*The new AIT campus sign in marble and brass, constructed with funds from AIT and the Thailand Chapter of AITAA.*

*Members of the newly-formed AITAA Brunei Chapter with former AIT President, Dr. Robert Banks and AIT Vice President for Development, Dr. R. Pama.*

The Brunei Chapter elected the following officers:

- |                             |                                       |
|-----------------------------|---------------------------------------|
| 1. Mr. Foh Fui Yong         | (EV-75)<br>President                  |
| 2. Mr. Vijay Kumar Kejriwal | (ST-74)<br>Vice President             |
| 3. Mr. Jose P. Cabalu       | (CO-74)<br>Secretary/<br>Treasurer    |
| 4. Mr. P. Rajendran         | (ST-78)<br>Auditor                    |
| 5. Mrs. Elvira G. Kueh      | (HS-78)<br>Press Relations<br>Officer |

#### EXECUTIVE COMMITTEE

The present Executive Committee consists of:

- |                             |                     |
|-----------------------------|---------------------|
| 1. Prof. Pisdhi Karasudhi   | President           |
| 2. Dr. Kanchit Malaivongs   | Executive Secretary |
| 3. Dr. Yew-Chaye Loo        | Finance Secretary   |
| 4. Dr. Mario T. Tabucanon   | Press Secretary     |
| 5. Mr. Jugal K. Agarwalla   | Business Secretary  |
| 6. Mr. Surendra M. Shrestha | Auditing Secretary  |

#### AMENDMENT TO THE AITAA CONSTITUTION

Article V Sec. 4 d) has been amended as follows:

- d) THE MANNER OF VOTING SHALL BE BY POSTAL BALLOT AND A BALLOTING COMMITTEE SHALL BE APPOINTED BY THE GOVERNING BOARD AT THE COMPLETION OF THE NOMINATIONS. THE BALLOTING COMMITTEE SHALL CONSIST OF AT LEAST THREE MEMBERS RESIDING IN THAILAND WHO MUST NOT BE THE NOMINATED CANDIDATES FOR ELECTION; AT LEAST ONE MEMBER OF THE BALLOTING COMMITTEE MUST BE AN EMPLOYEE OF AIT WHO SHALL SERVE AS RETURNING OFFICER FOR THE BALLOTS.

#### SCHOLARSHIP FUND

Based on a proposal made at the Twelfth Governing Board Meeting, President Pisdhi Karasudhi appointed Mr. Wisit Chareonit as Chairman of a committee for raising scholarship funds. Mr. Wisit later requested President Pisdhi, Dr. Kanchit Malaivongs and Mrs. Emilie Ketudat to be members of his committee.

#### HONORARY MEMBERSHIPS

Based on nominations made at the Twelfth Governing Board Meeting, invitations to become AITAA Honorary Members were made to:

Mr. Kwang-Shih Chang  
Prof. Kankuro Kaneshige  
H.E. Mrs. Rosario G. Manalo

There are now 66 AITAA honorary members.

#### APPOINTMENT OF NEW AITAA DIRECTOR

Following her recent appointment as AIT Academic Secretary, Mrs. Emily Ketudat has resigned from her post as AITAA Director after more than seven years of service. A new AITAA Director will be appointed soon. The AITAA office is currently being assisted by Miss Sopha Boonyaratankornkit.



*AITAA President Wisit Charoenit presiding at the presentation of the AITAA (Thailand)-donated clock for the AIT Center.*



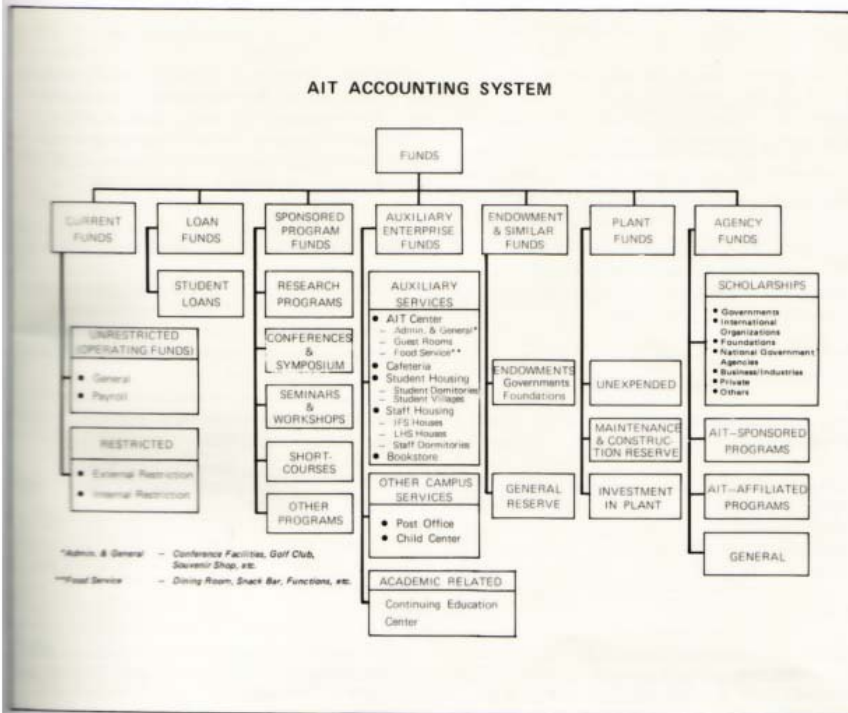
## Financial Review

The Asian Institute of Technology has adopted the concept of "Fund Accounting System", and has had a financial year running from 1st July to 30th June, since its inception in 1967 as an autonomous, independent, and non-profit international post-graduate technological institute. This method of maintaining the Institute's accounts ensures observance of limitations and restrictions placed on the use of the resources available to the Institute, which are classified into various funds in accordance with activities or objects specified for accounting and reporting purposes.

Seven main groups of funds are presently maintained by the Institute as follows :-

1. Current Funds
2. Loan Funds
3. Sponsored Program Funds
4. Auxiliary Enterprise Funds
5. Endowment & Similar Funds
6. Plant Funds
7. Agency Funds

The following chart will illustrate the fund groups mentioned above.



#### UNRESTRICTED CURRENT FUNDS (Operating Funds)

Unrestricted Current Funds are funds available for general operating purposes without restrictions imposed by outside agencies.

Cash Income FY 1982/83	(US\$1,000)	%
Tuition and Fees	3,675	78.8
Governmental Grants and Appropriations	246	5.3
Contract and Grant Research	220	4.7
Computer Center	95	2.0
Other Sources	428	9.2
<b>TOTAL</b>	<b>4,665</b>	<b>100.0</b>

*The cash expenditures for the same period were US\$4,392,000. Hence, comparing the cash income and cash expenditures, the Institute has an excess of income over expenditures of US\$ 273,000.*

#### RESTRICTED CURRENT FUNDS

Restricted Current Funds are funds available subject to restrictions imposed either externally or internally, specifying the manner in which said funds are to be used in current operations.

Income FY 1982/83	Cash (US\$ 1,000)	Kind (US\$ 1,000)	%
Governmental Grants and Appropriations	555	666	35.6
Gifts	421	—	12.3
Established Value of Contributed Services	—	1,066	31.1
Sponsored Programs	45	—	1.3
Sales and Services	507	—	14.8
Other Sources	169	—	4.9
<b>TOTAL</b>	<b>1,697</b>	<b>1,732</b>	<b>100.0</b>

*The cash balance carried forward from FY 1981/82 was US\$1,059,000, and cash expenditures and transfers were US\$1,849,000, leaving a balance in the funds of US\$907,000.*

#### LOAN FUNDS

Loan Funds are funds available for needy students to borrow for a short period.

#### SPONSORED PROGRAM FUNDS

Sponsored Program Funds are funds available subject to restrictions by donors or other agencies, as a condition of gifts, that they be used for research projects, conferences, seminars, short courses, or any other programs.

Cash Revenues FY 1982/83	(US\$1,000)	%
Research Programs	874	71.5
Conferences, Symposia, Seminars, Workshops, & Short Courses	9.5	7.8
Other Programs	253	20.7
<b>TOTAL</b>	<b>1,222</b>	<b>100.0</b>

*The cash balance carried forward from FY 1981/82 was US\$85,000 and cash disbursements and adjustments for the same period were US\$1,040,000. Hence, upon comparing the cash revenues and cash disbursements, the Institute would have an excess of revenues over disbursements of US\$267,000.*

#### AUXILIARY ENTERPRISE FUNDS

Auxiliary Enterprise Funds are funds provided for operating auxiliary services, other campus services, and academic related services, in support of academic divisions and/or administrative departments with a non-profit making purpose.

#### Auxiliary & Other Campus Services Financial Status FY 1982/83

	Cash (US\$ 1,000)	Kind (US\$ 1,000)	%
Revenues	900	20	100.0
Cost of Goods Sold	348	—	37.8
Operational Costs	433	20	49.2
Additional Assets	13	—	1.4
Reserve	29	—	3.2

*The "Auxiliary Enterprise Reserve" was established in 1980, and amounted to approximately US\$131,000 at the end of June 1983.*

*The "Continuing Education Center" was started at the beginning of 1980 under the "Auxiliary Enterprise Funds—Academic Related". The total revenues at the end of FY 1982/83 were approximately US\$108,000 and total disbursements were approximately US\$99,000. It is anticipated that in the future it eventually will take over all conferences, symposia, seminars, workshops, and short-courses, from Sponsored Program Funds.*

## ENDOWMENT FUNDS

Endowment Funds are funds which donors or other agencies have stipulated, as a condition of gifts, that the principal is to be maintained inviolate and in perpetuity, with only the income from the investments of the fund being expended.

Cash Status FY 1982/83	Since	
	FY 1982/83 (US\$1,000)	FY 1976/77 (US\$1,000)
Governments :		
The Republic of China	—	500
The Republic of Indonesia	34	76
The Republic of Korea	130	388
The Republic of the Philippines	10	60
The Government of Pakistan	56	56
Foundations :		
Education & Public Welfare Foundation	—	25
Lee Foundation	—	50
<b>TOTAL</b>	<b>230</b>	<b>1,155</b>

The Endowment Funds were established in 1976, and have been growing steadily ever since. There was US\$1,155,000 in these funds at the end of FY 1982/83, excluding interest earnings which were utilized for operating costs.

## GENERAL RESERVE

General Reserve is the fund which the Board of Trustees have stipulated shall be held in reserve for future use.

Cash Status FY 1982/83	Since	
	FY 1982/83 (US\$1,000)	FY 1976/77 (US\$1,000)
Transferred from		
Unrestricted Current Funds	495	1,996
Net Interest Received	282	723
<b>TOTAL</b>	<b>777</b>	<b>2,719</b>

The General Reserve was established in 1976, in order to guarantee against calamity, by transferring from the Operating Funds and occasionally from the year-end balance of the Unrestricted Current Funds. The interest incurred from its principal is accrued in the fund. However, it is calculated on a cash basis.

## UNEXPENDED PLANT FUNDS

Unexpended Plant Funds are funds to be used for the acquisition of physical properties.

Income FY 1982/83	Cash (US\$1,000)	Kind (US\$1,000)	%
Governmental Grants and Appropriations	1,548	407	86.0
Gifts	20	—	1.3
Other Income and Transfers	432	—	12.7
<b>TOTAL</b>	<b>2,000</b>	<b>407</b>	<b>100.0</b>

The deficit balance carried forward from FY 1981/82 was US\$5,000 and the amount expended and transferred was US\$1,385,000, leaving a balance in the funds of US\$1,017,000.

## MAINTENANCE & CONSTRUCTION RESERVE

Maintenance and Construction Reserve was established in 1979, in order to provide funds for costs of maintenance and construction. At the end of FY 1982/83, there was a balance of US\$105,000 available in the fund.

## NET INVESTMENT IN PLANT

Net Investment in Plant is the net value of the properties of the Institute.

Financial Status FY 1982/83	FY 1982/83 (US\$1,000)	Total Value (US\$1,000)
Campus Development	31	597
Buildings	1,032	16,907
Construction in Progress	(754)	1,175
Equipment	764	6,134
Library Acquisitions	131	1,515
<b>TOTAL</b>	<b>1,204</b>	<b>26,328</b>

**AGENCY FUNDS**

Agency Funds are funds held in trust by the Institute on behalf of donors and other agencies.

**Cash Revenues FY 1982/83**

	(US\$1,000)	%
Scholarships :		
Governments	3,635	84.9
International Organizations	7	0.2
Foundations/National Government Agencies	265	6.2
Business/Industries Private	345	8.1
	28	0.6
	4,280	100.0
AIT-Sponsored/AIT-Affiliated Programs		
Staff and Faculty Grants	268	
	105	
<b>TOTAL</b>	<b>4,653</b>	

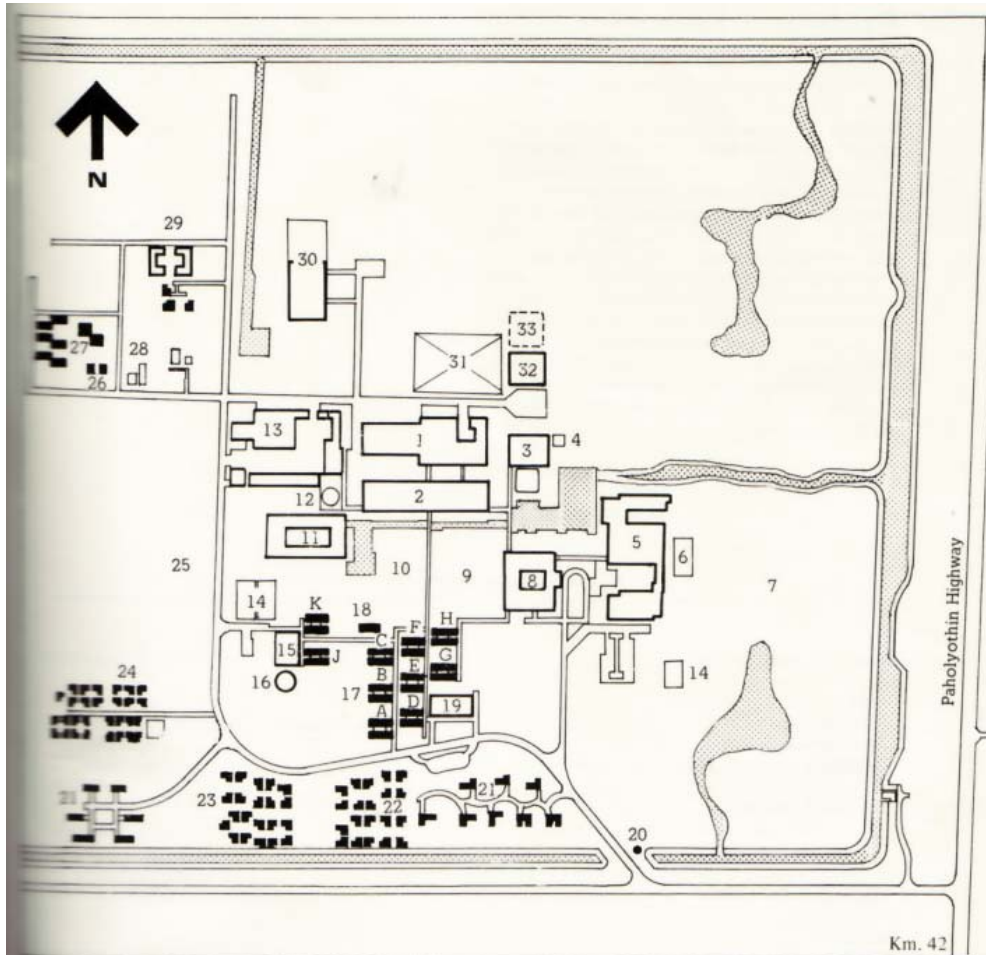
**SUMMARY OF CASH RECEIVED FROM DONORS**

**FY 1982/83**

	(US\$1,000)	%
Donors :		
Governments	7,613	76.1
International Organizations	292	2.9
Foundations	723	7.2
National Government Agencies	782	7.8
Business/Industries Private	575	5.7
	25	0.3
<b>TOTAL</b>	<b>10,010</b>	<b>100.0</b>



**LOCATION MAP OF AIT**



SITE PLAN OF AIT CAMPUS

Scale 1: 5,000

- |                                 |   |
|---------------------------------|---|
| 1 Academic Building North       | 18 Staff Dormitory II                     |
| 2 Academic Building South       | 19 Student Recreation Center              |
| 3 Regional Computer Center      | 20 Gate House                             |
| 4 Utility Building              | 21 Faculty Houses                         |
| 5 AIT Center                    | 22 Student Village I                      |
| 6 Swimming Pool                 | 23 Student Village II                     |
| 7 Golf Course                   | 24 Student Village III                    |
| 8 Administration Building       | 25 Cricket Pitch                          |
| 9 Football Field                | 26 Building Together Demonstration Houses |
| 10 Hockey Field                 | 27 Staff Housing Project III              |
| 11 Library                      | 28 Plant Nursery                          |
| 12 Water Tower                  | 29 Staff Dormitory I                      |
| 13 Physical Plant               | 30 Engineering Experimental Station       |
| 14 Tennis Courts                | 31 Energy Research Park                   |
| 15 Cafeteria                    | 32 Energy Technology Building I           |
| 16 Student Center (Korea House) | 33 Energy Technology Building II          |
| 17 Dormitories                  |   |

## Auditor's Report

We have examined the accompanying balance sheet of the Asian Institute of Technology as at June 30, 1983 and the related statements of changes in fund balances and current funds revenues and expenditures for the year then ended. Our examination was made in accordance with generally accepted auditing standards and accordingly included such tests of the accounting records and such other auditing procedures as we considered necessary in the circumstances.

In our opinion, the aforementioned financial statements present fairly the financial position of the Asian Institute of Technology at June 30, 1983 and the changes in fund balances and the current funds revenues and expenditures for the year then ended in accordance with generally accepted accounting principles applied on a basis consistent with that of the preceding year.

Price Waterhouse & Co.  
Bangkok,  
October 5, 1983

### ASSETS

#### CURRENT FUNDS

Unrestricted:	US\$
Cash at banks . . . . .	210,268.99
Investments, at cost . . . . .	389,591.63
Accounts receivable and accrued income . . . . .	1,017,420.25
Deposits . . . . .	6,615.51
Due from other funds	
— Restricted Current Funds . . . . .	21,815.68
— Loan Funds . . . . .	1,250.00
— Auxiliary Enterprise Funds . . . . .	42,753.11
— Agency Funds . . . . .	301,331.50
Restricted :	
Cash at banks . . . . .	312,392.35
Investments, at cost . . . . .	721,245.10
Accounts receivable and accrued income . . . . .	66,523.24
Total Current Funds . . . . .	3,091,207.36

#### LOAN FUNDS

Cash at bank . . . . .	734.65
Accounts receivable . . . . .	515.35
Total Loan Funds . . . . .	1,250.00

#### ENDOWMENT FUNDS

Cash at banks . . . . .	56,490.00
Investments, at cost . . . . .	1,098,280.04
Total Endowment Funds . . . . .	1,154,770.04

**LIABILITIES AND FUND BALANCES**

---

**CURRENT FUNDS**

	<b>US\$</b>
Unrestricted :	
Accounts payable and accrued expenses .....	193,127.40
Deposits .....	14,910.98
Fund balances (Schedule 1) .....	1,783,008.29
Restricted :	
Accounts payable and accrued expenses .....	171,325.94
Due to other funds	
- Unrestricted Current Funds .....	21,815.68
Fund balances (Schedule 1) .....	907,019.07
Total Current Funds .....	3,091,207.36

**LOAN FUNDS**

Due to other funds	
- Unrestricted Current Funds .....	1,250.00
Total Loan Funds .....	1,250.00

**ENDOWMENT FUNDS**

Fund balances (Schedule 3) .....	1,154,770.04
Total Endowment Funds .....	1,154,770.04

**ASSETS**

**GENERAL RESERVE**

Cash at banks .....	141.25
Investments, at cost .....	2,718,422.86
Accrued income .....	84,939.38
Total General Reserve .....	2,803,503.49

**PLANT FUNDS**

Unexpended :	
Cash at banks .....	161,650.94
Investments, at cost .....	842,556.27
Accounts receivable .....	30,273.35
Prepayments and deposits .....	132,159.49
Maintenance and Construction Reserve :	
Cash at bank .....	9,426.14
Investments, at cost .....	95,436.08
Net Investment in Plant, at cost:	
Land development .....	596,656.15
Buildings .....	16,907,541.40
Furniture and equipment .....	6,134,279.47
Library acquisitions .....	1,514,964.07
Construction in progress .....	1,048,451.88
Total Plant Funds .....	27,473,395.24

**AUXILIARY ENTERPRISE FUNDS**

Cash at banks .....	49,576.40
Investments, at cost .....	73,687.67
Accounts receivable and accrued income .....	88,382.42
Prepayments and deposits .....	22,506.78
Inventories .....	114,479.26
Due from other funds	
— Agency Funds .....	1,550.93
Total Auxiliary Enterprise Funds .....	350,183.46

**SPONSORED PROGRAM FUNDS**

Cash on hand and at banks .....	161,516.79
Investments, at cost .....	96,996.23
Accounts receivable .....	11,030.03
Total Sponsored Program Funds .....	269,543.05

**AGENCY FUNDS**

Cash at banks .....	251,919.88
Investments, at cost .....	77,190.10
Accounts receivable .....	9,857.71
Total Agency Funds .....	338,967.69



**LIABILITIES AND FUND BALANCES**

**GENERAL RESERVE**

Fund balances (Schedule 4) .....	2,803,503.49
Total General Reserve .....	2,803,503.49

**PLANT FUNDS**

Unexpended :	
Accounts payable and accrued expenses .....	23,280.26
Fund balances (Schedule 5)	
- Unallocated .....	138,048.29
- Allocated .....	878,942.01
Maintenance and Construction Reserve :	
Fund balances (Schedule 6)	
- Unallocated .....	104,862.22
Net Investment in Plant :	
Fund balances (Schedule 7)	
- Allocated .....	26,328,262.46
Total Plant Funds .....	27,473,395.24

**AUXILIARY ENTERPRISE FUNDS**

Accounts payable and accrued expenses .....	51,055.68
Deposits .....	1,981.84
Due to other funds	
- Unrestricted Current Funds .....	42,753.11
Fund balances (Schedule 8)	
Auxiliary services - Unallocated .....	90,000.00
- Allocated .....	5,698.18
- Reserve .....	124,402.02
- Wines and spirits .....	7,215.22
Academic related	
Continuing Education Center - Allocated .....	27,077.41
Total Auxiliary Enterprise Funds .....	350,183.46

**SPONSORED PROGRAM FUNDS**

Accounts payable and accrued expenses .....	2,057.27
Fund balances (Schedule 9) .....	267,485.78
Total Sponsored Program Funds .....	269,543.05

**AGENCY FUNDS**

Due to other funds	
- Unrestricted Current Funds .....	301,331.50
- Auxiliary Enterprise Funds .....	1,550.93
Fund balances (Schedule 10)	
- Allocated .....	36,790.13
- Unallocated .....	(704.87)
Total Agency Funds .....	338,967.69

**NOTES TO THE FINANCIAL STATEMENTS**  
June 30, 1983

**1. Summary of significant accounting policies**

**A Accrual basis :** The financial statements of the Asian Institute of Technology have been prepared on the accrual basis except for depreciation accounting as explained in note 1 to the financial statements. The statement of current funds revenues and expenditures is a statement of financial activities of current funds related to the current reporting period. It does not purport to present the results of operations or the net income or loss for the period as would a statement of income.

**B Fund accounting :** In order to ensure observance of limitations and restrictions placed on the use of the resources available to the Institute, the books of account of the Institute are maintained in accordance with the principles of "fund accounting". This is the procedure by which resources for various purposes are classified for accounting and reporting purposes into funds that are in accordance with activities or objects specified.

Within each fund group, fund balances that are restricted by outside sources are so indicated and are distinguished from unrestricted funds allocated to specific purposes by action of the governing board. Externally restricted funds may only be utilized in accordance with the purpose established by the source of such funds and are in contrast with unrestricted funds over which the governing board retains full control to use in achieving any of its institutional purposes.

Income derived from investments is accounted for as revenue in the unrestricted current funds, with the exception of general reserve fund and unexpended plant fund in which income is accounted for in the fund maintaining the investment.

All other unrestricted revenue is accounted for in the unrestricted current fund. Restricted gifts, grants, appropriations and other restricted resources are accounted for in the appropriate restricted funds.

**C Foreign currency translation :** The books and accounts of the Institute are maintained in U.S. dollars. At the balance sheet date assets and liabilities denominated in other currencies are translated into U.S. dollars at approximate exchange rates ruling on that date. Revenue and expenditures are translated at approximate rates in effect during the year. Exchange gains and losses are included in income in the year.

**D Physical plant and equipment** are stated at cost at date of acquisition or fair value at date of donation in the case of gifts. Depreciation on physical plant equipment is not recorded.

**2. COMMITMENTS**

At June 30, 1983 the Institute had outstanding commitments of approximately U.S.\$ 600,000 in respect of contracts for construction in progress at that date but not completed.

**AIT Annual Report 1983**

Prepared by Office of Information Services  
February 1984

Teresita M. Padilla	Editor
Jirawan Boonsrirochana	Asst. Editor
Apichart Ngarmniyom	Artist

## Administration

### ADMINISTRATIVE OFFICERS

---

President :	Prof. Robert B. Banks until July 1983 Prof. Alastair M. North from August 1983
Vice President for Academic Affairs :	Prof. John Hugh Jones
Vice President for Development :	Prof. Ricardo P. Pama
Vice President for Administration :	Mr. Kenneth R. Long
Academic Secretary & Secretary to the Board:	Mr. W.P.P. Abeydeera until 31 October 1983 Mrs. Emilie Ketudat from 1 November 1983
Dean of Student Affairs :	Mrs. Hilary Wongkaew
Head of Registry :	Mrs. Rosario Saiphong
Director of Administrative Services :	Mr. Nipon Masavisut
Director of Auxiliary Services :	Mr. Steven Molnar
Director of Finance :	Mr. Pongsakdi Vejajjiva
Director of Physical Plant :	Mr. Noppadon Muangkroot
Medical Officer :	Dr. Sivaporn Chakorn
Coordinator of Academic & Information Services:	Mr. Peter J. Swan
Information Services Officer:	Mr. Peter J. Swan until 26 July 1983 Ms. Teresita M. Padilla from 27 July 1983
Project Architect :	Mr. Amphon Pitnilabut

### DIVISION CHAIRMEN

---

Agricultural & Food Engineering	Dr. G. Singh
Computer Applications	Dr. Kanchit Malaivongs
Energy Technology	Prof. G.Y. Saunier
Environmental Engineering	Dr. B.N. Lohani
Geotechnical & Transportation Engineering	Prof. A.S. Balasubramaniam
Human Settlements Development	Prof. K.E. Weber
Industrial Engineering & Management	Dr. D.L. van Oudheusden
Structural Engineering & Construction	Dr. M. Wieland
Water Resources Engineering	Dr. Suphat Vongvisessomjai

### CENTER DIRECTORS

---

Asian Regional Remote Sensing Training Center	Dr. Kaew Nualchawee
Continuing Education Center	Dr. N.C. Austriaco
English Language Center	Mr. D.R. Hall
Library & Regional Documentation Center	Dr. Jacques Valls
Regional Computer Center	Dr. M.J. Marcus
Regional Research and Development Center	Prof. Anat Arbhahirama

