

CONTENTS:

President's Message	2
Academic Developments	4
Outreach Programs	14
Collaborations and Funding Partnerships	18
Alumni Affairs	26
Central Administration	30
Appendix	
Organizational Chart of AIT	32
1992 Institute Administration	33
1992 Membership of the Board of Trustees	34
List of Faculty	36
Portfolio of Contract and Sponsored Research	42
Continuing Education Activities	48
Financial Statements	52
Abbreviations	56

Cover:

Reshaping the Institute to Asia's Needs: AIT pursues its mission

Inherent to the nature of AIT is its capability to change in response to emerging and anticipated needs in the countries which it serves. The first major change, the transition from the SEATO Graduate School of Engineering to an independent, autonomous institution, was put into effect by the third Dean of the School and Founding President of AIT, Prof. Milton E. Bender, Jr. Prof. Bender, who visited AIT in early 1993 (16 years after retiring from his second Presidency), is certain that "AIT will continue to change many times in the course of its history. In those early years, I saw the Institute expand, fragment and reconsolidate. This process was repeated a number of times in the ensuing years. That AIT responds to change is its strength."

The conversion of AIT's existing academic structure into Schools is the latest demonstration of this strength. The four Schools will be in place by July 1993. Further details are on page 4.





Mutual understanding across national boundaries and productive intellectual and cultural discourse. This rhythm of academic life, instilled by the Institute's Founding President, Prof. Milton E. Bender, Jr., and other pioneering leaders, has been nurtured by succeeding administrations.

BRIEF HISTORY OF AIT

March 1958

The SEATO Graduate School of Engineering project, proposed in 1957, was approved by the Council of Ministers of the South-East Asia Treaty Organization at its meeting in Manila.

July 30, 1959

His Majesty King Bhumibol Adulyadej of Thailand signed the Royal Decree establishing the SEATO Graduate School of Engineering, based at the Chulalongkorn University campus.

September 10, 1959

The School opened with the first group of 18 students from Pakistan, the Philippines and Thailand, studying Hydraulic Engineering.

March 1961

The first graduation was held to confer the degree of Master of Engineering on eight students. The degrees were jointly conferred by Chulalongkorn University and the SEATO Graduate School of Engineering.

June 1966

The SEATO Council of Ministers, meeting in Canberra, took the necessary steps to phase out control of the Graduate School and permit its establishment as an independent institution to be called the Asian Institute of Technology.

November 23, 1967

The Asian Institute of Technology Enabling Act was published in the Royal Thai Government Gazette. The SEATO Graduate School of Engineering ceased to exist.

November 24, 1967

The Asian Institute of Technology was established as an independent, autonomous, international institution of higher learning.

May 4, 1968

H.M. King Bhumibol Adulyadej graciously presided over the Eighth Annual Graduation, the first in which AIT conferred its own degrees.

February 14, 1973

H.M. King Bhumibol Adulyadej opened the new AIT campus in Pathum Thani province.

April 1979

AIT marked its 20th Anniversary, with annual enrollment averaging 485 students and 1784 graduates making up the alumni body.

September 1984

The Institute unveiled the 1985-88 Academic Plan which sought to achieve a reasonable balance between classical engineering and management fields and the consolidation of existing academic divisions, along with new ventures in natural resources management and manufacturing technology.

August 1989

AIT marked its Third Decade with an international forum on Higher Education in Technology for Asia in the 21st Century. The findings of the Forum contributed to proposed revisions in the Institute's teaching, research, outreach and dissemination objectives.

On August 31, AIT was awarded the 1989 Ramon Magsaysay Award for International Understanding.

1991

A strategy study was carried out during the year, recommending a restructuring of the academic units and consolidation of academic programs.

1992

The recommendations of the strategy study was presented to the May 1992 Executive Committee meeting of the Board. It was decided that a restructuring should take place.

February 16, 1993

A memorandum of agreement was signed between AIT and the Socialist Republic of Vietnam to establish the AIT Center in Vietnam, with a branch in Hanoi and another in Ho Chi Minh City.

March 6, 1993

The amalgamation of the academic units into four schools and the appointment of Deans were officially announced.

PRESIDENT'S MESSAGE

A year ago I referred to 1991 as involving the initiation of long range strategic planning. In fact this dominated campus-wide debate through 1992. Now the Institute is embarked upon a realignment of its academic administrative structure. This will bring the academic activities more closely into harmony with the mission of the Institute, as well as provide more flexible learning progressions for students and allow greater cost effective use of teaching resources.

The ten Academic Divisions, two Interdisciplinary Programs and the School of Management will be reconstituted as four Schools, one dealing with civil or infrastructure engineering, another covering activities in natural resources, agriculture, energy, the environment, urban and regional planning and gender and development, a third concentrating on telecommunications, computer and industrial technologies, and the fourth dealing with management.

The advance to the future, too, was marked by the approach to maturity of new programs in Manufacturing Systems Engineering and Telecommunications, both of which graduated their first classes in December 1992.

In the September 1992 term, the number of registered students passed one thousand for the first time ever. Significant in this trend was a marked increase in staff students, reflecting growth of project research employment of research assistants and associates, and the higher number of students drawn from exchange programs with developed country universities.

Support, in cash and kind, for all Institute activities has never been stronger. However, the finances of the Institute are unusual in that so much of its income is in kind (faculty secondment and equipment



Her Majesty the Queen graciously accepted the AIT Gold Medal Award at a ceremony held on October 29, 1992. The medal was presented by Dr. Thanat Khoman, Chairman of the AIT Board of Trustees. President North presented the AIT certificate, which paid tribute to Her Majesty's successful endeavors in environmental protection and the conservation of natural resources. A painting contest on this theme was sponsored by the Institute.

Standing before one of the prize-winning entries are President North together with AIT Vice Presidents, Dr. Suvit Yodmani (left) and Prof. Ricardo P. Pama.

grants, particularly) or restricted to specific project applications. As a result, there is difficulty in balancing the unrestricted operating cash (traditionally about one-fourth to one-third of the total unrestricted cash and kind income). This is a particular problem since scholarships (the principal source of income to this fund) have been held constant for a number of years. Since the principal expenditures are salaries and utilities, the per capita student expenditure tends to increase with inflationary pressures, whereas the per capita income stays constant.

Fiscal Year 1991-92 closed with the cash account in balance. However, strict budgetary control was put in place for FY 1992-93. At the time of writing, this control seemed effective, with all planned academic activities underway and the prospect of budgetary balance being achieved next June becoming clearer.

The year's most significant event was the visit of Her Majesty Queen Sirikit of Thailand. Her Majesty graciously consented to receive from the Institute a Gold Medal recognizing her leadership in the conservation of natural resources and protection of the environment. Associated with the event was the presentation of scholarships and fellowships to allow Asian students to study natural resource and environmental matters. These prestigious study grants carry the name of Her Majesty. They will assist the propagation of Her Majesty's principles and concerns throughout the region. The visit was a wonderful event which brought great happiness to all members of the AIT community.

The year saw the appointment of a new Vice President for Academic Affairs and a new Vice President for Development. Prof. Ricardo P. Pama succeeded Prof. Helmut Eggert in the Academic

post and immediately restructured his office so as to pay greater attention to academic planning and policy development, while preparing for a measure of delegation of day-to-day responsibilities to the Schools. Dr. Suvit Yodmani succeeded Prof. Pama in the Development post, and also reorganized his resources to pay particular attention to developing financial support of the Institute in this region. In the short time since his appointment, Dr. Suvit has been conspicuously successful in harnessing government and private sector support in Thailand, thus compensating for a reduction in scholarship support from some of our traditional western donors.

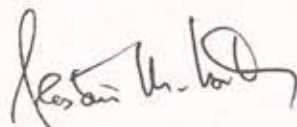
1992 will be the last year for which the Annual Report restricts its attention to the AIT Campus in Thailand. The AIT Center in Vietnam is now starting activities in both Hanoi and Ho Chi Minh cities. During the year, a number of feasibility and implementation missions were undertaken and contracts for Swiss and Finnish funding signed. The branch in Ho Chi Minh City, supported by Switzerland, will provide training in management education to teachers of four Vietnamese universities which plan to start their own Master of Business Administration degree programs. The branch in Hanoi will offer short courses in management to a wider audience drawn from the government and private sectors, as well as developing courses in agricultural and industrial manufacturing technologies. In both Centers the courses will be coordinated to provide an integrated sequence and will also be used to identify and prepare persons who may later come to the AIT campus for degree study. The final memorandum of agreement will be signed in

Hanoi in early 1993.

Associated with the development of a Center outside Thailand has been a steady change in the nationality distribution of students coming to AIT. Students from Thailand remain the single largest group (now slightly more than 20%). The next largest groups come from China, Nepal and Vietnam, as well as from the traditional major student-sending countries namely, the Philippines, India and Indonesia. An increasing number of students are coming from countries like Laos, Cambodia, and Mongolia, while the short course programs reach ever more effectively to the Pacific nation states and west Asia.

Annual Reports sometimes fail to portray the fact that a university is an assembly of human beings working in ways and under responsibility structures that are quite different from those in government or private corporations. Yet the interpersonal difficulties familiar in all universities seem to be lessened rather than magnified by the very international nature of the personnel. I think it is because most of us become aware of these differences and do our best to overcome them. The effect is clearly visible in the student population and is, I think, one of the wonderful things about the Institute. It would be a shame if this aspect were to get lost in the mass of figures and data which comprise a report such as this one.

I am sure that readers will agree with me that 1992 was, again, a very successful year for the Asian Institute of Technology.



EXTENSION OF PRESIDENCY



Prof. Alastair North, who is serving his second term as AIT President, has been elected by the Board of Trustees to serve for another three years until 1996.

Prof. North first assumed the Presidency in July 1983, becoming the Institute's fourth President since its establishment in 1959, originally as the SEATO Graduate School of Engineering. The School was formerly headed by a Dean.

His Presidency has been described by senior colleagues at AIT as "a period of further expansion, cohesion and consolidation." Clearly distinguishable among his achievements are the Institute's movement towards new technologies - telecommunications and computer integrated manufacturing being the most recent additions to its academic offerings - and the growth of service to the Indochina countries. In Vietnam, the most significant developments in the Institute's efforts are the opening of an AIT Center in Hanoi and the implementation of a management development project in Ho Chi Minh City.

A native of Aberdeen, Scotland, Prof. North was Burmah Professor of Physical Chemistry at the University of Strathclyde, where he also served as Head of Physical Chemistry, Chairman of the Department of Pure and Applied Chemistry, Dean of the School of Chemical and Materials Science, and University Vice-Principal and Deputy Principal.

Prof. North has received recognition for his scientific and technological contributions to Asia, his most recent award being his appointment as an Officer in the Most Excellent Order of the British Empire in May 1992.

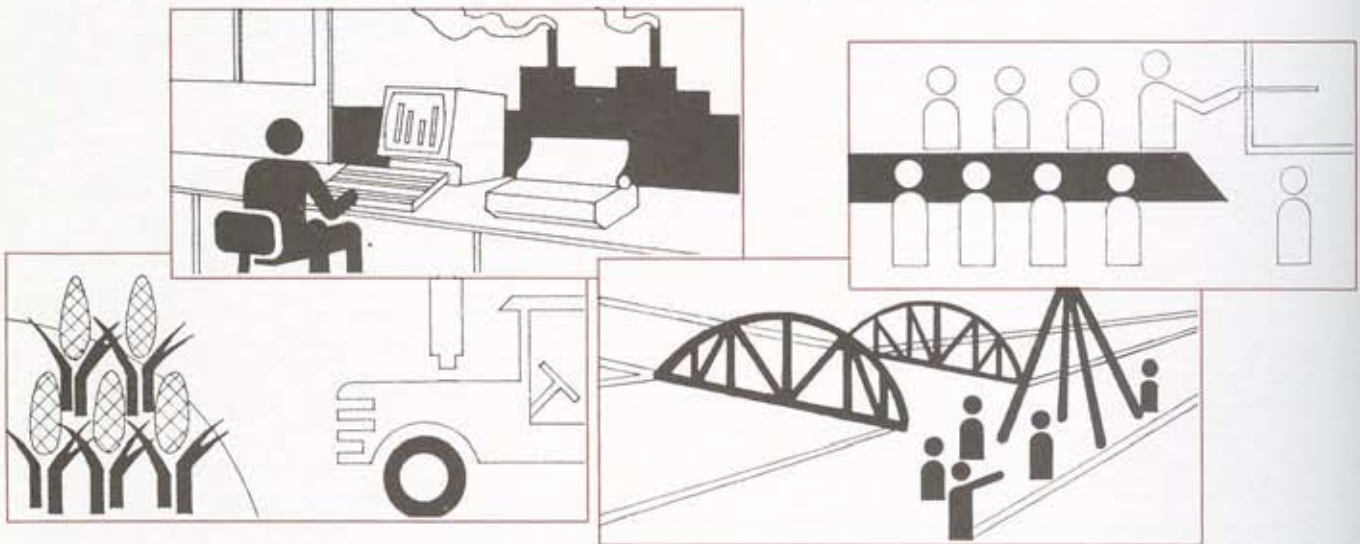
Says Prof. North, "I value greatly being given the opportunity to continue my service to the Institute and its mission, as well as serving the objectives of our many donors. I appreciate the cooperative efforts of all my colleagues in the Institute and the vote of confidence of the Board. As, in the implementation of the Strategy Study, we move through the cross-roads of strategic options, I shall give my utmost endeavor to leading the Institute towards the structural base for development into the next century."

ACADEMIC DEVELOPMENTS

"AIT will take a leadership role in the promotion of technological change and its management for sustainable development in the Asia and Pacific Region, through high-level education, research and outreach activities which integrate technology, planning and management. The focus of the Institute's activities is in technology with special emphasis on the interdisciplinary interface among the above three fields, and will include attention to environmental and socio-economic considerations."

AIT Mission Statement

Amalgamation of Academic Divisions into Schools



The Institute's determination to remain an active partner in Asia's technological development defines the rationale for the amalgamation of existing Academic Divisions into Schools.

While its scope is extensive, the amalgamation will be carried out rationally and will not be disruptive. For some of the existing Divisions, the process will be effortless and immediate, and will surely increase flexibility in academic activity while maximizing resource utilization. Other Divisions will require a phased amalgamation convergent with the evolution of curricular and related academic changes over a period of one year.

Response-to-needs rationale

The creation of the Schools by early 1993 demonstrates how the Institute, in its 33 years, has always been guided by the changing academic needs of the region, as well as by fluctuations in support provided by donors.

Growing from a single specialization in hydraulic engineering, at its foundation in 1959, AIT has expanded its teaching, research and outreach activities in four main areas: infrastructure engineering, agricultural and natural resource engineering, management and planning, and manufacturing systems engineering. These activities are carried out by ten Academic Divisions, two Interdisciplinary Programs, the School of Management (SOM), and six Centers.

Conversion of Divisions to Schools

The Academic Divisions, Interdisciplinary Programs and SOM will be amalgamated into four Schools, based on their thematic coherence. Each school will be headed by a Dean as academic, administrative and financial manager, working within delegated budgetary and academic autonomy.

The amalgamation will not directly affect the Centers, given the differences in the nature of their operations and the responsiveness of their present structures to market opportunities and client needs.

Four Schools

The amalgamation will create a school of civil engineering

activities, integrating programs associated with the construction of physical infrastructure; a school of activities in natural resources, agriculture, energy, the environment, urban and rural development planning and gender studies, integrating programs associated with sustainable development, conservation of natural resources and environmental protection; a school of telecommunications, computer and industrial technologies, focussing on new high technologies heavily dependent on computer hardware, software, control mechanisms and related protocols; and a school of management, incorporating all Institute activities in management, with a primary focus on the management of technology.

Long-term benefits

The benefits to be derived from the proposed amalgamation are clear. Students will have easier access to interdisciplinary learning paths, diverging from the relatively narrow and very discrete programs of the present fields of study.

For the faculty members, the amalgamation will offer opportunities for broadening and consolidating teaching and research in the new units. It will allow the evolution of academic expertise and educational offerings beyond the boundaries of the present academic division/field of study structure.

Improvements are expected in the efficiency of the Institute's management structure, as a result of the greater autonomy and devolved authority given to the new Schools.

Other advantages are foreseen in the maximization of resources as faculty expertise is allowed more flexibility and becomes more cost effective, and faculty time spent on administrative matters and the costs of related administrative support staff are reduced.

New Partnerships and Ventures

With PCBA

A noteworthy development in 1992 was the formation of a partnership with the Punjab Business Administration College in Lahore, Pakistan. The partnership agreement, signed in February 1992, allows qualified PCBA students to transfer credits to AIT's MBA program and to graduate after four terms. If the pilot program involving six students is judged successful, the student intake may increase to 30 next year.

Similarly sized groups are expected from Indonesia and Vietnam in the near future.

Students on the project are self-supporting.

With the University of Dortmund

The AIT/University of Dortmund M.Sc. in Spatial Planning for Regions in Growing Economies (SPRING) welcomed its first group of students on the modified program, under which students complete the first year of the two-year program in Dortmund. Since its inception, the program has successfully graduated two student intakes.

With WHO

The Division of Environmental Engineering was selected by the World Health Organization as one of six collaborating centers for water supply and waste disposal activities, for a four-year period starting in October 1992. As a collaborating center, the Division will participate in research, training, documentation, and information dissemination activities. On the advice of the Ministry of Public Health of the Royal Thai Government, Prof. Chongrak Polprasert, AEON Group Chair Professor, was appointed head of the Center.



Prof. Chongrak



PCBA officials (from left) Prof. Shahid H. Shah, Associate Dean, and Prof. Sh. Atique-ur-Rehman, Dean, visited the Institute in January 1992 to sign the PCBA/AIT partnership agreement. They are photographed with President Alastair North and Prof. Ricardo P. Pama, Vice President for Academic Affairs.



SPRING students at the Dortmund University campus.

"A major objective of the Institute is the creation of meaningful partnerships with other educational institutions. To this end, we look forward to building even further our harmonious collaborations with universities and colleges in Vietnam."

AIT President Alastair North

AIT Center in Vietnam

As the year ended, final negotiations were underway for the establishment of the AIT Center in Vietnam, the first branch of the Institute outside its campus in Thailand. AITCV will consist of two branches, one in Hanoi and another in Ho Chi Minh City.

Product Portfolio

AITCV will base its product portfolio on existing/emerging market needs in Vietnam and AIT's areas of strength.

The branch in Hanoi, which is being assisted by the Finnish Government, will focus on management, industrial technology and agricultural technology. The Swiss Government-supported branch in Ho Chi Minh City will provide training in management development. The target groups are administrators of ministries and departments, instructors of universities and research institutes, and managers of private and state-owned enterprises.

English language training and computer applications will be integrated in the training modules.



AITCV's temporary office in Hanoi.

Mission

AITCV's mission is to provide, on a self-supporting basis, high quality services in human resources and institutional competency development through postgraduate and short term training, research, consultancy and information services. These will be carried out for target groups with the best potential to achieve a multiplying effect.

First Four Years

In the first four years of operation, AITCV's work will focus on four main aspects: training programs, institutional development services, provision of equipment and facilities for the Center, and associated development/implementation of an operation and maintenance system.

AITCV will offer specially designed short-term training courses, as well as regular 12-week programs, which could count for credits to regular degree programs at AIT.

AITCV will be temporarily housed in the former office of the Ministry of Education and Training at 21 Le Thanh Tong Street, Hanoi. Its permanent headquarters will be constructed on a 50 ha plot of land near the Hanoi Agricultural University. Additional plots of land and facilities will be leased to the Center to establish field offices or stations.

The branch in Ho Chi Minh City will be based at the Ho Chi Minh City Polytechnic.

New Degree Programs

Biotechnology

Planning for the proposed program in Biotechnology moved further ahead, with expert consultants providing advice on appropriate curricula for Bioprocess Technology. A short course program has been scheduled for 1993. Construction of a building to house the program has begun.

Pre-Master's Bridging Program

Work on the development of the Pre-Master's Bridging Program continued. The program will bridge gaps in the first-degree education of students who come from disadvantaged backgrounds but whose academic qualifications meet the Institute's minimum requirements. It will cover

computer literacy, mathematics/statistics and science foundations. The program will be one of four academic areas to be conducted by the proposed Center for Language and Educational Technology (CLET). The three other areas are languages, learning-teaching systems and general studies. The existing Language Center will be subsumed into this new center.

Faculty

In 1992 the Institute had 175 Faculty members of all categories, compared to 155 in 1991. Of these, 128 were engaged on a full-time basis with contracts lasting one year or longer.

In terms of academic ranking, the proportion of Full Professors in the full-time, long-term Faculty body rose from 14 per cent in 1987 to 27 per cent in 1992. The corresponding proportions for Associate Professors during the same period were 63 per cent and 45 per cent, and 22 per cent and 25 per cent for Assistant Professors.

The regrouping of academic fields and amalgamation of academic units present individual Faculty members considerable scope for planning their career paths in the new structure, while also increasing their opportunity for joint appointments across fields or even Schools.



The international nature of the AIT Faculty body enhances technical and cultural interchange. Top photo shows Prof. Ricardo P. Pama, Vice President for Academic Affairs (extreme right), presiding over a Faculty meeting.



FACULTY STRENGTH AND DEVELOPMENT

- Some 32 nationalities are represented on the AIT Faculty, in approximately equal proportions from within and outside the Asian region.
- Of the 128 full time Faculty, 60 per cent are direct hire and 40 per cent are seconded.
- The overall increase in the Faculty body is due mainly to the growing number of Affiliated Faculty and short-term Visiting Faculty, almost all of whom are externally funded.
- That AIT is regarded as a career institution by its core direct-hire Faculty is indicated by the 52 contract renewals in 1992.
- The strong market demand for science and technology experts continues to challenge the Institute's recruitment and long-term employment of good faculty, especially in environmental engineering, computer science and other areas of specialization.

FACULTY NUMBERS

Rank	1988			1989			1990			1991			1992		
	Jan	May	Sept	Jan	May	Sept	Jan	May	Sept	Jan	May	Sept	Jan	May	Sept
Professor	12	13	16	17	17	24	23	23	28	28	28	28	27	31	30
Associate Professor	51	50	50	47	54	52	52	51	53	51	53	51	53	49	50
Assistant Professor	18	23	22	23	23	23	23	26	24	22	23	27	29	27	28
Instructor	1	1	1	1	-	1	1	1	1	1	1	2	2	2	2
Associated Faculty	12	8	10	13	7	6	10	12	8	12	9	20	20	25	23
Affiliated Faculty	11	13	10	15	14	13	14	12	15	17	19	15	15	17	19
Visiting Faculty	19	20	20	22	20	22	18	19	18	19	19	12	14	19	23
Total	124	128	129	138	135	141	141	144	147	150	152	155	160	170	175

STUDENTS

DEMAND-LED GROWTH OF ENROLMENT

- Demand-led growth explained increased enrolments in the School of Management and the Interdisciplinary Natural Resources Development and Management Program.
- In Industrial Engineering and Management, enrolment rose with the introduction of Manufacturing Systems Engineering. The corresponding figure in Telecommunications grew as the Division admitted its second student intake.



The program in manufacturing systems engineering provides hands-on training in advanced manufacturing technologies.

1992 Enrolment by Academic Division

TERM	AFE	CS	ET	EE	GTE	HSD	IEM	IREM	INRDM	SEC	SOM	TC	WRE
Jan	117	48	66	81	92	77	45	47	46	69	77	23	54
May	120	91	65	51	52	109	92	46	61	41	43	43	54
Sept	78	89	37	80	96	124	91	23	51	73	85	43	32

Average Annual Enrolment

1992	105	76	56	71	80	103	76	39	53	61	68	36	47
1991	108	83	59	67	78	102	64	36	34	55	60	20	46

TALKING TO AIT STUDENTS

SAQIB BHATTI, 27, is one of six students on the joint MBA Program offered by AIT and the Punjab College of Business Administration in Lahore, Pakistan.



Mr. Bhatti joined AIT from PCBA, which offers MBA programs in association with universities in the United States and Switzerland, and since 1991 with AIT. At the end of his first year at PCBA, Mr. Bhatti, who was the top student in his class, opted to continue his MBA program at AIT. "I am happy to have made the right choice," says Mr. Bhatti. "There are not that many universities which offer management of technology. More and more, MOT has become a very important field, particularly made so by the need to use technology for development and the emphasis placed on maintaining a sound environment.

"AIT provides students a unique opportunity to meet so many different people from various countries. Even when I sit and take a drink with friends, I always learn something new. Those who want to learn will find the diversity of culture, knowledge and experiences at AIT really quite remarkable."

"Personality development, which involves projecting a good image and communicating well, is as important as having a good head for business. Exposure to AIT's international community can contribute significantly in achieving this," he stresses.

"That AIT is located in Thailand is another advantage. This country is developing very fast and is attracting many European and American investments. There is no need to go to the West to learn how business is done there. We can learn that right here in Thailand and at AIT," he adds.

Mr. Bhatti's career plans offer him two options: pursuing a Ph.D. program, or setting up his own consulting firm on foreign investments. Definitely, his experience at AIT will help him reach a decision.

Trends in Doctoral Enrolment

The difficulty in obtaining support for Doctoral scholarships accounted for the small number of Doctoral students. Last year's Doctoral enrolment, which averaged 12 per cent of the total enrolment, fell short of the 20 per cent target.

Efforts to obtain scholarship support, as well as to improve the quality of the Doctoral program continued. The Doctoral Program Review Committee (DPRC), with new appointments to its chair and membership, pursued its rigorous monitoring of the program and the progress of students on it.

Together with the Academic Senate, the DPRC closely scrutinized the official requirements and procedures for the Doctoral program. Particular attention was given to achieving the appropriate balance between coursework and research, and ensuring close and regular contacts between Doctoral degree candidates and their respective program committees.

STUDENT ENROLMENT HIGHLIGHTS

- Average termly enrolment in the degree-awarding units rose by almost 9 per cent in 1992, to 915 students, compared with 841 in 1991.
- The full time enrolment (including PCAD, and Talkbase programs) averaged 946, increasing by 5 per cent from the previous year.
- 24.6 per cent of the September 1992 enrolment were women, increasing from the 20 per cent reported in the same period last year.

1992 Full Time Enrolment

Term	Divisions/ School*	Centers**	Total
Jan	891	51	942
May	901	51	952
Sept	952	74	1026

* All programs

** PCAD,RS,Talkbase

Doctoral dissertations during the year were given a positive evaluation by select teams of external examiners.

PATCHARAPORN YANPIRAT is a Doctoral degree candidate in Industrial Engineering and Management.



Seven years ago, Mrs. Patcharaporn obtained her Master's degree from AIT. Taking leave from her post as an instructor at Kasetsart University's Industrial Engineering Department, she returned to the Institute in September 1992, six months into her pregnancy, to start her Ph. D. program.

Mrs. Patcharaporn makes a point: women have as much ability and opportunity as men to pursue their career ambitions.

A mother of two children, a girl and a boy, Mrs. Patcharaporn gives a lot of importance to proper management of time, in her case apportioning time between family and studies.

"When I enrolled in the Doctoral program here, I knew that I would be required to take control and make good planning. I decided not to live on campus because I have my family to take care of. Luckily, my house is not far from AIT and my in-laws live nearby.

"A successful career need not result in failed family life," she insists. "At this time, I would like to focus on my study and family until my children grow up, and then I will devote my life to the society. To create a good society, we need to start from the family.

"By helping in the education of qualified engineers, I feel that I am making significant contributions to the development of Thailand. I hope to do this even better after my Doctoral studies. Moreover, I would like to get involved in new research that can benefit not only my students, but the country as a whole."

International Enrolment

The overall pattern of the Institute's international enrolment remained diverse but witnessed a number of changes in country representation in the student body.

As recently as 1984, the People's Republic of China and Vietnam had only around 10 students each in an enrolment of 630. In 1992, PRC (with 8 per cent of the enrolment) replaced Nepal and Vietnam (now fourth and fifth, respectively) as AIT's third highest student constituency, after Thailand (with over 20 per cent of the enrolment) and the Philippines (9 per cent).



1992 Enrolment By Country

	Jan	May	Sept
Bangladesh	44	45	53
Belgium	1	1	2
Bhutan	3	1	16
Bolivia	-	-	1
Brazil	1	-	-
Brunei	8	3	1
Cambodia	3	3	3
Canada	1	2	7
PRC	75	88	81
Chinese Taipei	39	30	49
Denmark	-	-	1
Finland	1	1	1
France	6	5	4
Germany	-	-	1
Hong Kong	1	1	1
India	66	70	68
Indonesia	64	58	66
Japan	4	4	5
Kenya	3	1	1
RoK	9	7	7
Laos	4	8	8
Macao	2	2	2
Malawi	1	1	1
Malaysia	18	9	10
Maldives	1	-	-
Mongolia	1	-	-
Myanmar	34	34	30
Nepal	84	87	81
Netherlands	1	-	-
Norway	-	-	1
Pakistan	64	62	58
PNG	-	-	1
Philippines	83	83	90
Sri Lanka	63	54	62
Sweden	-	-	2
Switzerland	1	2	1
Tanzania	1	1	1
Thailand	145	173	206
USA	4	3	2
United Kingdom	-	1	2
Vietnam	83	83	75
Yemen	1	-	-
Zimbabwe	-	2	-
Total*	920	925	1001

*Excluding Talkbase program

PATTERN OF ENROLMENT IN AIT'S 37-COUNTRY STUDENT BODY

- Thailand, the Philippines and PRC now account for the three largest student constituencies, followed by Nepal and Vietnam.
- Increased enrolments from Laos and Cambodia are expected as AIT develops programs to suit their educational needs. An example is the Pre-Master's Bridging Program.
- Enrolment from countries with developed economies, namely Chinese Taipei, Japan, the Republic of Korea, and Malaysia, declined.



Student contribution to study costs

In the September 1992 term, the overall enrolment passed the one thousandth mark for the first time, reaching 1026.

While the increased enrolment was achieved without sacrificing academic standards, it caused an imbalance in Institute income and expenditure, much like a trend seen in 1990-91 when enrolment rose but the number of enrolled students for whom the Institute received fees actually dropped.

To help defray increasing costs, the Institute may have to replace fee waivers with a fee reduction policy. Fees are waived for Institute employees and family members who wish to enrol, academically qualified self-support students on their fourth and fifth terms, and degree program students who extend beyond the period covered by their scholarships. Non-fee paying students accounted for 13 per cent of the total enrolment as of mid-November 1992.

The motivational and community-serving advantages of the fee-waiver policy are being studied in the light of pressures placed on Institute resources, at a time of considerable financial stringency.

TALKING TO AIT STUDENTS

MANANDHAR UTTAM KRISHNA, a 34-year old Nepalese, is a Doctoral degree candidate in Environmental Engineering.



"I plan to teach when I return to Nepal. I guess this is why I am here as a Doctoral student. I would really like to do something for my country, and I hope to be able to apply the knowledge and expertise I am gaining at AIT. For me, working in the developing countries offers great challenges, both professional and personal."

Mr. Manandhar did not take a serious interest in environmental issues until he joined trekking trips with expatriate colleagues in the Finnish Government-funded Hill Forest Development Project. "It was on these treks that I became fully aware of the environment." A civil engineer graduate from the Indian Institute of Technology in Madras, Mr. Manandhar was involved in the construction of roads and quarters for officers of the project. At the project's completion, Mr. Manandhar joined AIT's Master's program in Environmental Engineering. "I learned about AIT from friends at IIT."

His strong academic performance and favorable assessment by faculty won him admission into the Ph.D. program in 1990. His dissertation, "Sewage System as a Circulating Reactor," investigates the potential use of wastewater conveyance systems as treatment reactors. "It is a very promising project. So far, my experiments have yielded encouraging results. Such a system could be used to provide multi-purpose service, including transport and treatment. Definitely, the system can be used in small-scale operations and is an economical alternative to constructing a new treatment plant. In other cases, application maybe restricted to pre-treatment only.

"This topic came to me when I took special studies about sewage systems under Prof. Chongrak Polprasert and Mr. Hans Schroder. I then did an extensive literature search on the subject of treatment reactors."

CHIEN-MIN WU comes from Chinese Taipei. He is a self-supporting student of Geotechnical and Transportation Engineering.



"For AIT students, discipline and determination are very essential qualities, particularly for those who are financing their studies. I suppose, this makes me doubly proud about being here."

"What attracted me most to AIT is the acknowledged reputation of its geotechnical engineering program," recalls 31-year old Chien-Min Wu, explaining his choice of graduate school. Before joining AIT, Mr. Wu, who is a civil engineering graduate from Chung-Yuan University, worked for five years at CTCI Corp., a major consulting firm in Chinese Taipei. "I had to study a lot of technical papers in the CTCI library, and many of these were published papers and articles by Prof. Balasubramaniam, who, as we all know, is a respected geotechnical engineering expert, and other AIT faculty."

Mr. Wu describes studying at AIT as a period for "professional recharging". Engineers need this if they are to keep up with developments in the field. I find my own 'professional recharging' very challenging. I have long been out of the university and English is not my mother tongue. But it is certainly worth the time and money that I am investing. I am pleased with my Master's program in soil engineering. The faculty, the course arrangement and the laboratory equipment are of a very high standard."

GRADUATE RECORD

- AIT produced 444 graduates in 1992 compared with 413 in 1991.
- The increase was in the Master's program, which graduated 429 students in 1992 compared to 389 in 1991.
- The number of Doctoral graduates dropped from 20 in 1992 to 14 in 1991.
- The three largest groups of graduates came from Thailand (65 graduates), Philippines (44), and Vietnam (41).
- By division, the largest groups of graduates came from AFE (61 graduates), HSD (48) and GTE (44).

1992 GRADUATES

By Degree

	Apr	Aug	Dec	Total
D. Eng.	1	4	4	9
D.Tech. Sc.	1	1	3	5
M. Eng.	86	87	83	256
M. Sc.	24	44	70	138
MBA	35	0	0	35
Dip. AIT	0	1	0	1
Total	147	137	160	444

By Country

	MBA	M. Eng.	M. Sc.	D. Eng.	D.Tech. Sc.	Total
Bangladesh	3	15	2			20
Bhutan		1				1
PRC	2	16	17	3		38
Chinese Taipei	4	16	4			24
France	1					1
India	3	24	4			31
Indonesia		9	12			21
Japan		3				3
RoK		1	4		1	6
Laos		2				2
Maldives		1				1
Myanmar*	2	16	6			25
Malaysia	2	7	2			11
Nepal	2	18	15	1		36
Netherlands	1					1
Philippines	3	22	19			44
Pakistan	3	23	9		1	36
Sri Lanka	4	21	6			31
Thailand	3	40	18	3	1	65
USA			2			2
Vietnam	2	21	15	1	2	41

By Division

AFE		24	35		2	61
CS		21	16	1		38
ET		29	3	2		34
EE		22	9	1	1	33
GTE		37	6	1		44
HSD			47		1	48
IEM		36	2		1	39
INRDM*		3	20			24
SOM	35					35
SEC		27		3		30
TC		23				23
WRE		34		1		35
Total	35	256	138	9	5	444

* One INRDM Diploma was awarded to a student from Myanmar.

GRADUATION AWARDS

JAMES A. LINEN III MEMORIAL PRIZE

Established in 1988 in memory of Mr. James A. Linen, a Charter Founding Member and Life Member of the Board of Trustees (1967-88)

HISAMATSU PRIZE

Given from funds provided in 1982 by Prof. Yoshihiro Hisamatsu, former Dean of the Faculty of Engineering, University of Tokyo, and at present Adviser in Technology for Nisshin Steel Co.Ltd., Japan

TIM KENDALL MEMORIAL PRIZE

Established in 1981 from funds provided by the UK-AIT Appeal, in memory of Mr. R.M. Kendall, Member of the Board of Trustees (1971-81)

MAHESH VARMA PRIZE

Established from funds provided by Prof. Mahesh Varma, in recognition of the most outstanding graduate in structural engineering and construction

CHIN FUNG KEE PRIZE

Awarded from funds contributed in 1990 by the distinguished students of the late Prof. Chin Fung Kee, former Vice-Chancellor, University of Malaya, and past President of the Southeast Asian Geotechnical Society

TELECOM-FINLAND PRIZE

Given from funds provided in 1991 by Telecom, Finland

KEIDANREN AWARD

Established in 1990 with funds provided by KEIDANREN, this award is presented to female graduates in recognition of their outstanding academic performance

The KEIDANREN Award was presented in April as the **AKIO MORITA PRIZE**

The KEIDANREN Award was presented in August as the **AKIO MORITA PRIZE**

The KEIDANREN Award was presented in December as the **ESHIRO SAITO PRIZE**

April

Mr. Altaf Hussain Wani (EE), India
Adviser:
Dr. Y. H. Zhuang

Mr. Alan Dale C. Gonzales (SOM), Philippines
Adviser: Mr. Ragnar Soegaard

Mr. Indigaha M.S. Sathyaprasad (SEC), Sri Lanka
Advisers: Dr. S. Ogunlana/Dr. D. Arditi

Mr. Geekiyamage S.K. Fernando (GTE), Sri Lanka
Advisers: Prof. A.S. Balasubramaniam/
Dr. Y. Honjo

Mrs. Nguyen Thi Tuan Anh (SOM), Vietnam
Adviser:
Dr. K. Ramanathan

AWARDEES

August

Mr. Kishor M. Butani (AFE), India
Adviser:
Prof. G. Singh

Mr. Aung Than Kyi @Shieh Haw Yueh (ET), Myanmar
Adviser:
Prof. R.H.B.Exell

Mr. Gao Jiakai (WRE), PRC
Adviser:
Prof. Tawatchai Tingsanchai

Ms. Sharon Basada Singzon (AFE), Philippines
Adviser:
Dr. S. H. Upasena

December

Mr. Chaivatna Sumetphong (CS), Thailand
Adviser:
Dr. K. Kanchanasut

Mr. Bhanu Raja Neupane (HSD), Nepal
Adviser:
Prof. K. E. Weber

Mr. Takeshi Oga (IEM), Japan
Adviser:
Prof. O. Fujiwara

Mr. Monzur Murshed Kabir (TC), Bangladesh
Adviser:
Dr. A. Murch

Ms. H.B.C. Nishanthi De Silva (TC), Sri Lanka
Adviser:
Dr. A. Murch

OUTREACH PROGRAMS

The Institute has been a trusted and experienced agent in the continued career development of Asian professionals engaged in management, engineering and technological fields. Its capability to provide a coherent and immediate response to the needs of both developed and disadvantaged countries in the region accounts for the continued success of its outreach programs. These include training courses, research projects, information dissemination activities and technical consultancies. While the majority of the outreach programs are carried out by the Academic Centers, a good number are also conducted by Faculty Members.

The Appendix lists the Institute's 1992 portfolio of research projects (completed and on-going) and continuing education activities.

RESEARCH AND PUBLICATIONS STRENGTH

- Sponsored research during 1992 grew from 140 projects in 1991 to 180.
- Approximate overall value figures for 1992 place the value of continuing research at 8.8 million US dollars and 3.1 million US dollars for completed research.
- The Institute-wide research picture confirms strong and varied work by the different Academic Divisions.
- The percentage of Faculty publications in international refereed journals has increased over the past five years, as has the number of publication of all kinds.

- 1 = Journal Paper
- 2 = Conference Paper/Proceedings
- 3 = AIT Report (Research)
- 4 = Book/Chapter in a Book
- 5 = Total
- 6 = Others*

*Monographs, Working Papers, Reports, (including progress, interim, consultancy, etc.) Reviews, Division Research Report/Paper, Newsletters, Reference Material, Handbook of Courses, Lecture Notes, etc.

SUMMARY OF SPONSORED RESEARCH PROJECTS FOR 1992

Academic Unit	Sponsored Research		Total
	Completed	In Progress	
AFE	15	33	48
CS	1	1	2
ET	19	28	47
EE	4	15	19
GTE	4	13	17
HSD	13	45	58
IEM	4	6	10
SEC	-	7	7
WRE	1	4	5
SOM	-	4	4
INRDM	1	12	13
IREM	2	8	10
LC	-	4	4
Total	64	180	244

SUMMARY OF PUBLICATIONS FOR 1992

Academic Unit	1	2	3	4	5	6
AFE	61	56	3	2	122	19
CS	16	14	-	-	30	4
ET	19	21	1	3	44	53
EE	6	15	-	2	23	2
GTE	14	37	1	5	57	11
HSD	16	5	16	3	40	29
IEM	17	11	-	-	28	24
SEC	27	22	-	3	52	-
WRE	5	30	3	-	38	6
SOM	3	3	-	-	6	4
TC	1	4	-	-	5	-
IREM	5	18	-	3	26	-
INRDM	4	19	-	-	23	9
LC	2	3	-	1	6	1
LRDC	-	11	1	6	18	10
Total	196	269	25	28	518	172

ASIAN DISASTER PREPAREDNESS CENTER

ADPC's development as an important focal point for the promotion of disaster management in the region continued through 1992, a fitting complement to the global observance of the International Decade for Natural Disaster Reduction.

As in previous years, the Center's 1992 programs consisted of three broad types of activities: general, technical and information.

The general program included disaster management courses (DMC) and workshops on improving cyclone warning response and mitigation. Technical support was provided to the Philippines' Core Shelter Project, sponsored by UNDP, and to UNDR0-funded advisory missions on relief operations after the eruption of Mt. Pinatubo, and on flood assessment in Cambodia. The Center assisted in national workshops, often initiated by former participants of ADPC courses.

ADPC carried out consultancies for UNDP in the Philippines, the Ministry of Relief in Coordination of Cyclone Rehabilitation in Bangladesh, and UNCHS in Nairobi, to assess cyclone damage in Apia, Western Samoa. It conducted post-disaster evaluations, as well as a study on disaster mitigation in Asia and the Pacific which was published at the request of ADB.

ADPC initiated two new programs in 1992. In the Private Sector Program, ADPC is collaborating with OFDA and USAID's International Disaster Advisory Committee, to stimulate and demonstrate the value of corporate-government-community cooperation in disaster management.

The OFDA-supported Shelter and Urban Development Program assists in the development of in-country programs for disaster preparedness and mitigation activities related to urban development and shelter.

ADPC works closely with government offices and NGOs and is a collaborating center of OFDA and UNDR0 and its South Pacific Program Office. It has close links with UNDP, UNHCR, UNICEF, WHO, WMO, and other UN agencies.

Under the Directorship of Mr. Terry Jeggle, ADPC's general, technical and information programs will retain their emphasis on the relationships between disasters and the environment/development. Mr. Jeggle assumed office in November 1992, taking over from ADPC's founding Director, Lt. Col. Brian Ward, who has retired.

Mr. Jeggle



Left: After the earthquake in Indonesia in December 1992, ADPC assisted the UN in coordinating international donor response and helped local disaster officials in providing emergency shelter donated by USAID. Right: Talkbase students from Indonesia, Laos, Thailand and Vietnam.

LANGUAGE CENTER

In 1992 the Language Center launched several new initiatives in its outreach and on-campus programs.

In continued collaboration with the AIT Aquaculture Outreach Program, the Center expanded the range of its activities to include curriculum development planning at two agricultural colleges in Cambodia. Intensive language workshops with the Aquaculture Outreach in Northeast Thailand Project will also continue in 1993.

The Center will be fully involved with the SDC/AIT Project in Ho Chi Minh City, providing complementary language training alongside the management development program for Vietnamese students. The work will begin in March 1993 with an eight-week intensive program similar to the on-campus Talkbase program.

As 1992 approached its end, plans for the proposed AIT/RELC Conference were finalized. The two-day conference, Language Programs in Development Projects, will be held in April 1993 at AIT, bringing together teachers, language specialists, program planners and donor representatives, mostly from Southeast Asian countries. It will focus on current issues in language education in the context of national development.

The Center will likewise be actively involved in the proposed multi-disciplinary Pre-Master's Bridging Program. (See New Degree Programs on page 6).



CONTINUING EDUCATION CENTER

The wide range of training programs, consultancies and technical assistance carried out by CEC in 1992 reflects the Center's proven capability to provide multi-faceted programs and services at the AIT campus or in the home country of client agencies/companies.

CEC training activities in 1992, each lasting from two to six weeks, are listed in the Appendix. These include 12 customized training courses, 18 international training courses, and 11 study trips cum seminars.

Other major activities in 1992 included consultancies related to the establishment of an Institute presence in the Indochina countries, through the provision of training and research services.

In his capacity as Acting Director of the Hanoi-based AIT Center in Vietnam or AITCV, Dr. Nicanor Austriaco, Director of CEC, undertook several missions to Vietnam during the year to participate in detailed discussions

with officials from the Ministry of Education and Training and other government agencies and concerned educational institutions. The AIT missions were jointly carried out with SDC and FINNIDA. (AITCV is described in greater detail on page 6).

Other CEC consultancies in 1992 covered HRD planning and implementation, assessment of training needs, and development of strategies for language training.



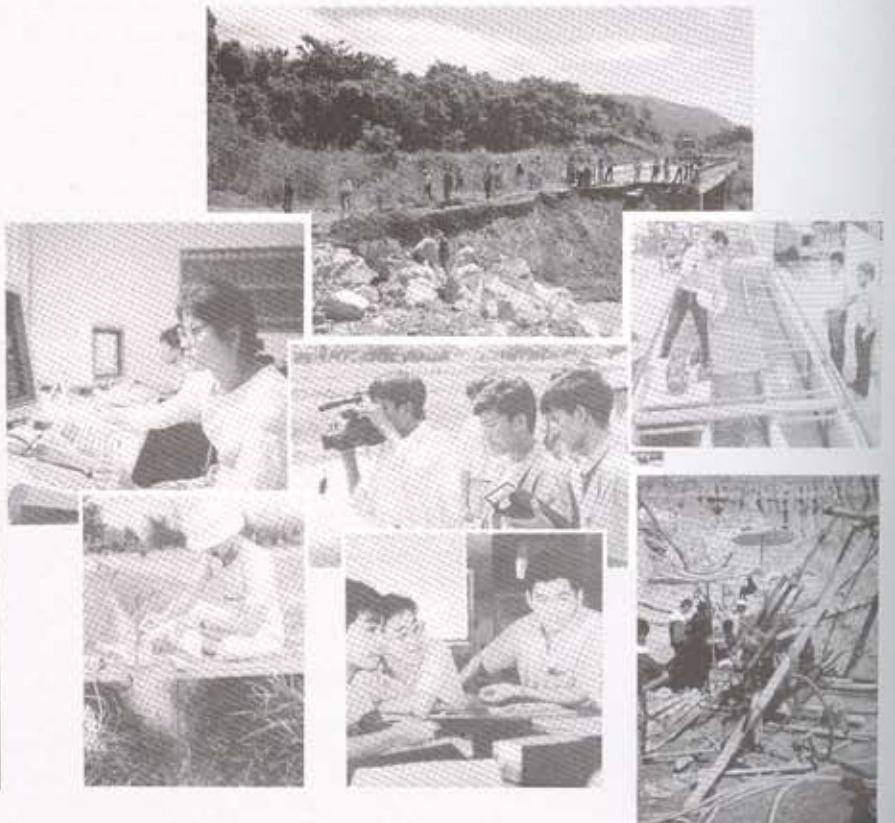
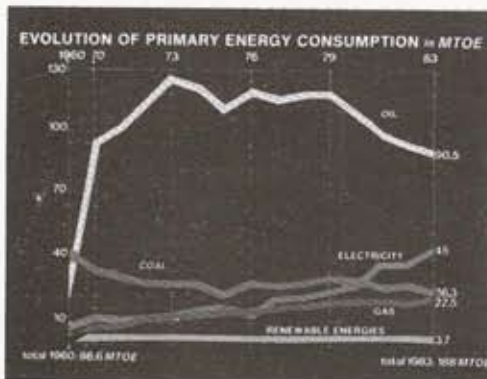
Dr. Austriaco

REGIONAL COMPUTER CENTER

RCC conducts training and consultancies as part of its growing outreach activities. In 1992, the Center fielded expert teams to Indonesia and the Philippines to conduct training in special client-oriented computer applications for government agencies and institutions. These training programs were in addition to the Center's regular PCAD training activities on campus.

RCC consultancies in 1992 covered information design and implementation, systems integration and the development of database and data communications infrastructure. These were carried out for government agencies in several Asian countries.

Continuing education programs cover a wide range of activities on various aspects of Asia's development.



LIBRARY AND REGIONAL DOCUMENTATION CENTER

Information professionals and subject specialists in four main topics namely energy, ferrocement, geotechnical engineering, and environment, are the target groups of outreach programs conducted by the Library and the four centers which make up LRDC.

INFORMATION MANAGEMENT

During the year, LRDC conducted 12 training programs for 98 participants from 21 countries. These included the final session of a four-week training course on repackaging, which was sponsored by IDRC for personnel of IDRC projects in 12 countries in the region.

In response to increased requests for admission, LRDC's three-month course on new information technologies and computerized library services was held semi-annually, instead of annually. The course provided training in automated library systems, information services, and new telecommunication technologies for librarians, documentalists, and information managers.

ENERGY

The Regional Energy Resources Information Center (RERIC) distributed publications and information materials on energy and renewable energy sources to 400 members in 85 countries, mostly in Asia and the Pacific. The Center carried out Thailand-based surveys on existing and potential demand for energy and environmental information by small and medium-scale industries, for the UNIDO sponsored-Energy and Environment Information System (EEIS) project, and on small-scale energy equipment manufacturers and suppliers for the Technology and Development Group, University of Twente, the Netherlands.

FERROCEMENT

The transfer of ferrocement technology for development was the focus of activities carried out in 1992 by the International Ferrocement Information Center and its three networks.

Increasing its membership from 14 to 16 countries in Asia, the Middle East, Europe, Latin America and the Caribbean, the Ferrocement Information Network (FIN) completed an IDRC-funded project which included 12 end-user ferrocement training programs and the production of various information materials, including computer- and video-based products. FIN expanded its activities by extending support to research projects.

IFIC's Reference Centers Network now has 88 members in 45 countries the world over, while its Consultants Network has 200 members, mostly in Asia and Europe.

The networks, together with IFIC's traditional outreach activities, have contributed significantly to the popularity of ferrocement in Asia, particularly in India, Indonesia, Malaysia and the Philippines, where national committees and local focal points for ferrocement technology transfer have been established.

ENVIRONMENT

The second phase of ENSICNET, which is supported by ADB as a technical assistance project with the Environmental Systems Information Center or ENSIC, started in February 1992. During the year, the project produced databases on environmental impact assessment studies in each of the six network countries, and published an Environment Index on their respective contributions up to December 1991. The Index also contains additions to the ENSIC database from January to June 1992.

A new ENSICNET subnet, China-Middle South, was established in Guangzhou in August 1992. Based at the South China Institute for Environmental Science, the subnet covers environmental protection and research organizations in six central and southern provinces.

Further network strengthening was discussed at ENSICNET meetings with Indonesian and Nepalese focal points.

In Vietnam, ENSICNET activities included training programs in Hanoi and Ho Chi Minh cities.

Completed and on-going ENSIC publications include environmental directories of experts, institutions and on-going environment-related projects for ENSICNET-Vietnam and ENSICNET-Nepal, a pocket guide on the bacteriological quality of drinking water for ENSICNET-Philippines, a directory of water and wastewater treatment equipment manufacturers for ENSICNET-China, and a directory of EIA studies for ENSICNET-Indonesia.

COLLABORATIONS AND FUNDING PARTNERSHIPS

Far-reaching changes in funding and resource generation concerns provided the impetus for efforts by the Institute's Development arm, to ensure support for the Institute's on-going programs and new ventures outside Thailand. Undertaken in the face of substantial cutbacks in support provided by some of AIT's traditional donor governments, these efforts concentrated on exploring new funding sources, particularly in Thailand, while maintaining long-term partnerships with other major donors and collaborators.

By the end of Fiscal Year 1991-92, contributions secured for the Institute totalled Baht 607,493,000, an increase of 12 per cent over FY 1990-91 receipts.

The FY 1991-92 receipts brought the cumulative contributions received since 1959 to Baht 6,190,032,000.

TOTAL CONTRIBUTIONS FY 1991 - 92 (Baht '000)

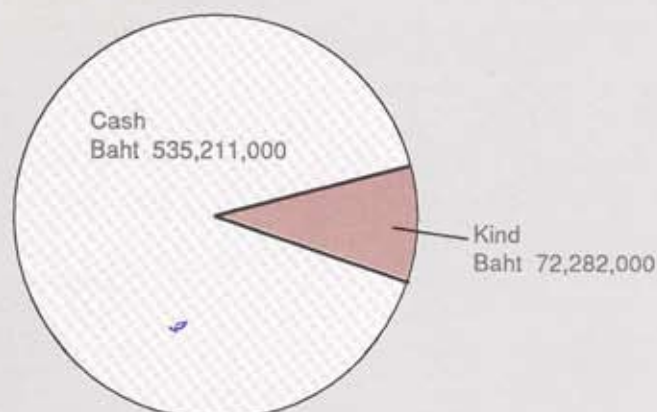
	Cash	Kind	Total	% Increase From FY 90-91
Scholarship	276,494		276,494	16.35
Research Projects	86,043		86,043	9.63
Continuing Education	86,880		86,880	3.07
Capital Grant	30,941		30,941	89.88
Equipment and Books	13,683	21,836	35,519	95.66
Endowment Fund	1,951		1,951	-5.98
Faculty/Staff Secondment	26,511	50,446	76,957	-10.34
Operating Grant	11,493		11,493	-22.95
Local Currency Grant	1,215		1,215	168.21
Total	535,211	72,282	607,493	12.89



The large increase in capital grant is accounted for by grants for the construction of two buildings, namely Telecommunications (above) and Computer Science (below).



FY 1991-92 CONTRIBUTIONS CASH AND KIND



○ Scholarships accounted for the largest cash contribution, followed by grants for continuing education and research.

○ In-kind contributions consisted of two components: grants for equipment and books, and faculty/staff secondment.

RESOURCE GENERATION HIGHLIGHTS IN FY 1991-92

New partnerships with Thailand, AIT's host country

Thailand, one of the Institute's founding countries and a major donor in its 33 years, provided further support through three new programs. Secured since May 1992 were 14 scholarships under the Queen Sirikit Scholarship for Asian Environmental Development Program, 10 scholarships under the Thai Aid Program for Myanmar and Vietnam, and 14 scholarships annually for the next four years under the State Enterprise Human Resource Development/Recruitment Program.

AIT signed a joint Support for Staff Development Program (two-to-one scheme) with the Royal Thai Government. The Program will provide an annual grant of 20

million Baht for five years for Master's and Doctoral scholarships. AIT signed similar scholarship schemes with Rajamangala Institute of Technology and Thammasat University.

New cooperative programs were proposed in the latter part of 1992 to the Royal Thai Government. These are expected to provide 40 to 50 scholarship grants annually over the next two years.

Groundwork for the proposed science and technology park, the focus of another major partnership between AIT and the Royal Thai Government, further developed in 1992. Construction is expected to begin by early 1993.

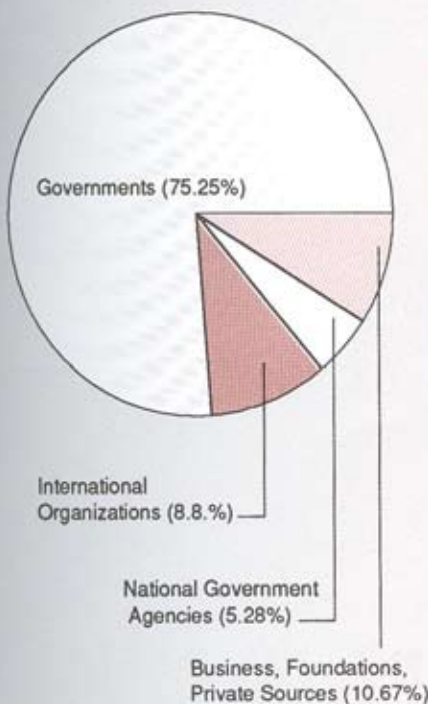
Renewal of collaborative programs with eight donors, namely France, Japan, Norway, Finland, Spain, Philippines, Germany, and Procter & Gamble (Thailand)

Valued at approximately 13 million US dollars and covering a period of one to four years, these renewals stabilized the annual scholarship level at 400, and secured 26 faculty secondments (approximately 636 man/months) and general and special technical equipment.

Continuing negotiations for program renewals with other major donors

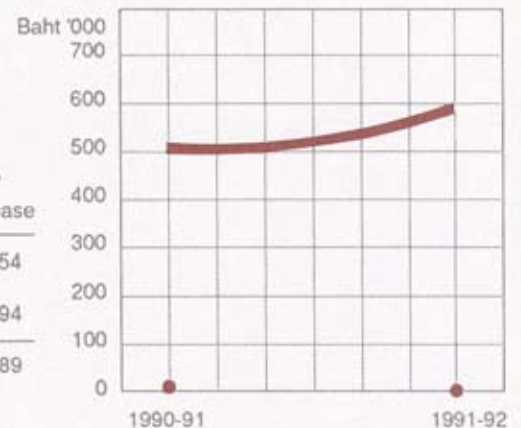
At the end of FY 1991-92 negotiations for program renewals were put forward to Sweden, Belgium, Austria, the Netherlands, EC, and the People's Republic of China. Annual renewals with France and Japan were also discussed.

FY 1991-92 CONTRIBUTIONS BY SECTOR



FY 1991-92 CONTRIBUTIONS INCREASED BY 12% FROM FY 1990-91

	FY 1990-91	FY 1991-92	% Increase
Cash	479,824,000	535,211,000	11.54
Kind	58,322,000	72,282,000	23.94
Total	538,146,000	607,493,000	12.89



Support for new ventures in Indochina

Support for the establishment of an AIT Center in Vietnam was provided by Switzerland and Finland. The Swiss-funded Ho Chi Minh branch will carry out a management development project. Finland provided a seed grant for the branch in Hanoi.

In Cambodia, AIT's outreach efforts were supported by the Swedish International Development Authority, which funded a preliminary study for a library development project for Cambodian institutions.

Towards building an AIT presence in Vietnam...

(Top photo). An exchange of letters between H. E. Mr. G. Fonjallaz, the Swiss Ambassador to Thailand, and AIT President North, signified the provision of support by SDC to the Institute's management development project in Ho Chi Minh.

(Right). FINNIDA support for the Hanoi branch was contained in a memorandum of understanding signed by the Finnish Ambassador to Thailand, H. E. Mr. Eero Kalevi Salovaara, and President North.



**TOTAL CONTRIBUTIONS
CASH AND KIND
FY 1959-92**

Donors	% Contribution
Governments	
Australia	5.30
Austria	0.30
Bangladesh	0.02
Brunei	0.01
Canada	5.31
People's Republic of China	0.16
Chinese Taipei	2.83
Finland	0.97
India	0.29
Indonesia	0.10
Israel	0.03
Japan	10.60
Republic of Korea	0.27
Malaysia	0.01
Nepal	0.02
New Zealand	0.70
Norway	2.06
Pakistan	0.16
Philippines	0.17
Sri Lanka	0.02
Sweden	0.44
Switzerland	0.96
Thailand	11.58
United States of America	10.81
Vietnam	0.01
European Economic Community	
CEC	2.37
Belgium	1.03
Denmark	1.66
Germany	8.82
France	3.36
Italy	0.26
Netherlands	3.22
Spain	0.04
United Kingdom	3.95
International Organizations	4.93
National Government Agencies	5.71
Business, Foundations, Private and Others	11.52
Total	100.00

Establishment of new partnerships with the private sector

New partnerships with the private sector were developed, providing support for scholarships, seminars, exhibitions, and conferences.

Support for new academic programs at the AIT campus

Funding support of 8.6 million Baht has been obtained to fund start-up operations of the proposed Bioprocess Technology program.

FACULTY/ STAFF SECONDMENTS FY 1991-92

Donors	Man Months
Governments	
Australia	8.5
Canada	75.5
People's Republic of China	30.0
Chinese Taipei	5.0
Finland	58.0
Japan	164.5
Republic of Korea	9.5
Norway	22.0
Sweden	32.5
Switzerland	12.0
USA	9.0
European Economic Community	
CEC	16.0
Belgium	36.5
Denmark	32.5
France	85.5
Germany	118.0
United Kingdom	82.0
International Organizations	
ADB	4.5
ESCAP	3.5
ESA	12.0
IUCN	10.0
Government Agencies	
IDRC, Canada	10.0
INRIA, France	1.5
Business and Industry	
Charoen Pokphand Co. Ltd.	6.5
Others	12.0
Total	857.00



H. E. Mr. Olov Ternstrom, former Swedish Ambassador to Thailand, bade farewell to AIT by presiding over the opening of the renovated environmental engineering laboratory. The renovation was funded by the Swedish Government.

From top:

H. E. Mr. Johan Dahl, the Norwegian Ambassador to Thailand, and Dr. Thanat Khoman, Chairman of the AIT Board of Trustees, signed a cooperation agreement providing Norwegian support for 1992-1994.

Support for the partnership project between AIT and CIDA was presented by H. E. Mr. Arthur C. Perron, the Canadian Ambassador to Thailand, to AIT President North.

Mrs. A. Gaullier, French consultant to SEAMES, and Mr. Michel Deverge, Cultural Counsellor of the French Embassy in Bangkok (from left), presented the French Government's support for 1991-92 to Institute President Alastair North and Prof. Ricardo P. Pama, Vice President for Academic Affairs.

**COOPERATIVE PROGRAMS EXTENDED
AND ESTABLISHED IN FY 1991-92**

EXTENSIONS

France (annual)

- ET operations, research, training, faculty support
- ET faculty support, outreach activities
- SOM operations and development
- AIT project in Vietnam
- Remote sensing laboratory project
- Master's and Doctoral scholarships
- Doctoral scholarship in France
- Secondment of 3 senior and 2 junior experts, short-term mission

Japan (annual)

- Master's and Doctoral scholarships
- Grants for operations and equipment
- 13 long-term faculty secondments

Norway (1992-94)

- Master's scholarships
- Faculty secondment

Finland (1992-95)

- Master's and Doctoral scholarships
- Support to Telecommunications and AIT Center in Vietnam

Spain (1991-93)

- Master's scholarships

Germany (1991-94)

- Master's scholarships
- One-year scholarships for SPRING Asia Program
- Secondment of 6 faculty members
- Equipment grant

Philippines

- Grant for operations

Proctor & Gamble (Thailand)

- Master's scholarship

NEW PROGRAMS

Thailand (1992-95)

- Master's and Doctoral scholarships

Sweden

- Preliminary study for library development (Cambodia)

JFK Foundation, Education and Public Welfare Foundation (Thailand), Thai Farmers Bank

- Construction of Bioprocess Technology Building

Rajamangala Institute of Technology (1992-96)

- Master's scholarships for RIT faculty



From top: Australia's contribution to AIT was presented by Mr. David Barber, Counsellor of the Australian Embassy, to Institute President Alastair North. Also in photo are AIT Vice Presidents, Prof. Ricardo P. Pama (Academic Affairs) and Dr. Suvit Yodmani (Development).

A five-axes MAHO milling machine was presented by H. E. Mr. J. Noirfalisse, the Belgian Ambassador to Thailand, and received by Prof. P. C. Pandey, IEM Division Chairman, Mr. Erik Bohez, CIM Lab Manager, and AIT President Alastair North (from left).

Filipino students supported by scholarships from Spain are photographed with H. E. Mr. Josue Villa (left), the Filipino Ambassador to Thailand, and H. E. Mr. Tomas Chavarri (right), the Spanish Ambassador to Thailand.



H. E. Baron Berthold von Pffetten-Arnabach, the German Ambassador to Thailand (seated, second from right), presented AIT/CDG scholarships in October 1992.



ISSUES AND RECOMMENDATIONS

The number of internal scholarships has plateaued. To support increments in Institute expenditures, now averaging 10 to 13 per cent annually, greater attention should be given to increasing externally funded scholarships coming from the private sector, as well as from bilateral or multilateral funding for human resource development in various Asian countries.

Partnerships with American foundations should be further explored. Under study by the American Schools and Hospitals Abroad Foundation is a funding request for the construction of a building for the Center for International Business and Private Enterprise, to be based at AIT.

Support from Asian countries for mutually beneficial collaboration bear great potential. Such relationships should be explored with various Asian countries, through bilateral/multilateral funding agreements for human development activities. Potential partnerships are seen with Pakistan, Bangladesh, and Indonesia.

Promotional and marketing efforts should be intensified and targeted at attracting externally funded or self-paying students from key countries in Asia. These efforts should deploy mixed media, including awareness campaigns, exhibitions, lectures and symposia in relevant institutions, and dissemination of information materials on AIT's academic and outreach programs.

Left photos, from top:

On behalf of the Thai Government, Dr. Saisuree Chutikul, Minister to the Prime Minister's Office, presented a scholarship grant valued at 100 million Baht to support Thai students over the next five years. From left: AIT President North, Dr. Panom Pongpaibool, Secretary General of the Office of the National Education Commission, and AIT Vice President for Academic Affairs, Prof. Ricardo P. Pama.

Support to the AIT Endowment Fund was presented by the Pakistani Ambassador to Thailand, H. E. Maj. Gen. (Ret.) Riaz Mahmud.

AIT President North and AIT Vice President for Academic Affairs, Prof. Ricardo P. Pama, were on hand to receive grants from the Philippines and India. H. E. Mr. Josue Villa, Ambassador of the Philippines to Thailand, accompanied by Mrs. Sonia Brady, Minister Counsellor of the Philippine Embassy, presented over one million Baht to the Institute's operating fund. The Indian Government's donation of agricultural equipment and technical books was presented by H. E. Mr. A. N. Ram, the Indian Ambassador to Thailand.

SUMMARY OF CONTRIBUTIONS (CASH AND KIND) FY 1991-92

Governments

Australia	3.30
Austria	2.02
Brunel	0.08
Canada	2.25
People's Republic of China	0.74
Chinese Taipei	1.80
Finland	3.05
India	0.20
Japan	8.96
Republic of Korea	0.10
Malaysia	0.10
New Zealand	0.37
Norway	2.54
Pakistan	0.08
Philippines	0.10
Sweden	2.17
Switzerland	1.24
Thailand	10.55
United States of America	7.52
European Community	
CEC	6.30
Belgium	0.85
Denmark	4.62
France	3.60
Germany	7.13
Netherlands	1.55
United Kingdom	4.03
Sub-total	75.25

International Organizations

ADB	2.24
Commonwealth Secretariat	0.04
ESCAP	0.24
ESA	0.30
FAO	0.03
ICIMOD	0.01
ICLARM	0.01
ILO	0.31
IRRI	0.07
ITU	0.01
IUCN	0.28
Mekong Secretariat	0.62
UN	0.02
UNCHS	0.22
UNDP	1.79
UNDRO	0.09
UNEP-GRID	1.82
UNESCO	0.13
UNICEF	0.13
UNIDO	0.10
WHO	0.18
World Bank	0.16
Sub-total	8.80

National Government Agencies

<i>Austria</i>	
International Atomic Energy Agency	0.02
<i>Bangladesh</i>	
International Center for Diarrhoeal	
Disease Research	0.01
<i>Belgium</i>	
Rijksuniversitair Centrum	
Antwerpen	0.08
<i>Cambodia</i>	
Cambodia Development Resources	
Institute	0.11
<i>Canada</i>	
CUC	0.10
IDRC	1.25
<i>France</i>	
INRIA	0.02
<i>Fiji</i>	
Forum Secretariat	0.03
Housing Authority	0.01
<i>Finland</i>	
Postes Telecommunications	0.01
<i>Germany</i>	
Dortmund University	0.01
<i>Hong Kong</i>	
Auxiliary Medical Services	0.04
<i>Indonesia</i>	
Area Development Project -	
West Pasama	0.03
Dalhousie University	0.07
Dept. of Education and Culture	0.08
Directorate General of Estates	0.01
Eastern Indonesian University	
Development Project	0.21
Lembang Horticultural Resources	
Institute	0.02
Ministry of Transmigration	0.09
Petra Christian University	0.01
Stmix Budiluhur	0.01
Atmajaya University, Jogjakarta	0.06
<i>Japan</i>	
National Space Development	
Agency	0.02

Malaysia

Mara Institute of Technology	0.03
Ministry of Education	0.24
National Productivity Cooperatives	0.01
Public Services Department	0.04
Sarawak Agricultural Development	
Project	0.08

Nepal

Mechi Hill Irrigation and Related	
Development Project	0.01
Nepal Resources Management	
Project	0.01

Philippines

Mandala Agricultural Development	
Cooperative	0.03
National Economic and	
Development Authority	0.02

Papua New Guinea

Dept. of Agriculture and	
Livestock	0.01

Pakistan

Punjab College of Business	
Administration	0.09

Singapore

National Productivity Board	0.01
-----------------------------	------

Sri Lanka

Integrated Rural Development	
Project	0.05
Irrigation Department	0.02
Land and Water Management	
Resources Center	0.03
Mahaweli Authority	0.01
Mirp Irrigation Management	
Division	0.10
Ministry of Policy Planning and	
Implementation	0.02
Ministry of Public Administration	0.04
National Water Supply and	
Drainage Board	0.03
Rural Development Training and	
Research Institute	0.01
Sri Lanka Export Development	
Board	0.01

Sweden

Royal Institute of Technology	0.03
-------------------------------	------



The first Nishihara Sanitation Research Scholarship was awarded to Thai student Mr. Monchai Wongkarnka of the Environmental Engineering Division by Mr. Eiji Nishihara, Chairman of Nishihara Environmental Sanitation Research Corp. Ltd. Also in photo are Dr. Suvit Yodmani, AIT Vice President for Development; and Mr. Yoshinari Tanaka, NESR Section Manager.

Thailand

Airport Authority of Thailand	0.01
Agricultural Economic Office	0.02
Bangkok Mass Transit Authority	0.04
Bank of Thailand	0.01
Office of the Commission for the Management of Road Traffic	0.03
Dept. of Land Development	0.08
Dept. of Mineral Resources	0.03
DTEC	0.09
EGAT	0.11
Express and Rapid Transit Authority	0.01
Fine Arts Department	0.07
Industrial Estates Authority of Thailand	0.01
Kasetsart University	0.02
KMIT	0.06
MOSTE	0.10
National Energy Administration	0.04
National Statistical Office	0.06
Royal Thai Army	0.04
Rajamangala Institute of Technology	0.03
Telephone Organization of Thailand	0.01
Thammasat University	0.21

UK

Agriculture and Food Research Council	0.12
---------------------------------------	------

United States

Academy for Educational Development	0.18
Institute of International Education	0.09
Peace Corps	0.31
University of California	0.02
University of Michigan	0.15

Vietnam

CIDSE	0.01
Interforest	0.09
Sub-total	5.28



Procter & Gamble (Thailand) renewed its scholarship support to the School of Management. P&G Managing Director, Mr. Wilfried van Assche, is photographed presenting a grant to AIT President North.

Business and Foundations

A.P. Vanden Berg Machinefabriek B.V.	0.01
Argonne National Laboratory, USA.	0.12
Autodesk, Inc., USA.	0.05
Bangkok Airways Co. Ltd.	0.02
Bang Pa-In Papers Mill Industry Co. Ltd.	0.01
Bangpakong Industry Park 2 Co. Ltd.	0.01
C.C.P. International Srl., Italy	0.01
Charoen Pokphand Co. Ltd.	0.05
Chinese Petroleum Corp., Chinese Taipei	0.09
CIM Co. Ltd.	0.15
Consolidated Management Service Ltd.	0.08
Centrifuge Instrumentation Equipment Ltd.	0.01
Data Products Toppan Moore Co. Ltd.	0.01
Dawidag Consortium, JV.	0.14
Devecon OY, Finland	0.04
Deloitte & Touche, Malaysia	0.03
Dhurakijpundit University	0.01
Diakonisches Werk Der Evang	0.19
Eraba Corp.	0.03
Ericsson Telecom Corp. Far East	0.37
ETC Technical Assistance Team II	0.02
Exotissimo Travel Co. Ltd.	0.03
Exxon Chemical Geopolymers, UK.	0.01
Fudo Construction Co. Ltd.	0.05
Fuji Xerox Co. Ltd., Japan	0.01
Geco Singapore (Private) Ltd.	0.03
Geoflex Co. Ltd.	0.01
Geotechnics Holland, B.V.	0.01
German Construction Ltd.	0.01
Goudsche Machinefabriek, B.V.	0.01
Ground Treatment System F.E. Pte.	0.01
Hawlet-Packard (Thailand) Ltd.	0.01
IBM A/PG	0.14
IBM Thailand Co. Ltd.	0.02
Index International Group Co. Ltd.	0.03
International Development Consultant Services, Sweden	0.01
Italthai Industrial Co. Ltd.	0.01
IWACO Consultant for Water and Environment	0.05
Kay Thai Co. Ltd.	0.01
Kiso Jiban Consultants	0.02
Kumagai Gumi Co. Ltd.	0.01
Lyonnais Des Baux, France	0.03
M.D.X. Co. Ltd.	0.01
Malaysian Examination Syndicate	0.05
Marugo Foundation Co. Ltd.	0.01
Metro Politan Agriculture and Concrete Piles Co. Ltd.	0.01
Mitsubishi Research Institute Inc.	0.06
Muang Roong Ltd.	0.02
Nishimatsu-Mitsubishi Consortium	0.02
Nokia Telecommunications	1.38
Norconsult International A.S.	0.02
Northwest Hyd. Consultants, Inc.	0.27
Obayashi Corp., Japan	0.01
Okuminisches Studien Week E.V.	0.03
P.T. Arun Ngl.	0.03
P.T. Hanfarm Dian Konsultan, Indonesia	0.11
P.T. Krakatua Industrial Estates	0.03
Petronas Nasional Bhd., Malaysia	0.06
Pilecon Engineering Bhd.	0.01
Polyfelt Geosynthetics Sdn. Bhd.	0.27
Seatec International Ltd.	0.15
Shinawatra Datacom Co. Ltd.	0.01
Scot Conseil	0.11
Siam Cement Co. Ltd.	0.10
Siam CNC Works Co. Ltd.	0.01
Simon Hatog	0.01

Smash, Paris, France	0.04
Snowy Mountain Engineering Corp., Laos	0.02
Soil and Water Ltd., Thailand	0.02
Soletanche (Thailand) Co. Ltd.	0.01
SPA Project Management Co. Ltd.	0.01
Taiwan Cement Corp.	0.08
Taiwan Power Co.	0.19
Taiyo Kogyo Corp., Japan	0.01
Tektronix Inc., USA.	0.50
Telekom Malaysia	0.02
Tenax Spa, Italy	0.04
Terratec, Switzerland	0.01
Thai Airways International	0.01
Thai CRT Co. Ltd.	0.01
Thai Engineering Consultant Co. Ltd.	0.10
Thai Farmers Bank	0.37
Thai Nishimatsu Construction Co.Ltd.	0.01
Thai Wah Co. Ltd.	0.16
T.N.O. Building and Construction Research (Netherlands)	0.01
Toyosha Co. Ltd.	0.02
W.P. Schmitz Stiftung, Germany	0.02
AEON Group Environmental Foundation, Japan	0.35
AIT Foundation Inc.	0.09
Asia Foundation	0.01
Education and Public Welfare Foundation, Thailand	0.36
Ford Foundation Inc.	0.03
John F. Kennedy Foundation, Thailand	0.60
Keidanren (CBCC)	0.17
Lee Foundation Inc.	0.05
Mecune Foundation Inc.	0.02
Rockefeller Brothers Fund Inc.	0.19
Sasakawa Peace Foundation	1.08
South East Asia Foundation Inc.	0.02
Winrock International	0.14
AADCP Coordination Office	0.03
AITAA	0.27
Ascan-Canada Forest Tree Seed Center	0.04
Aqua Renaissance Research Association	0.15
Bangladesh-Canada Agriculture Sector Team	0.04
Care, Dhaka	0.12
Chulabhorn Research Institute, Thailand	0.04
International Centre of Swedish Labour Movement	0.05
Japan-Indonesia Science and Technology Forum	0.03
Kenya-Canada Energy Division Project	0.03
Laos-Swedish Forestry Project	0.03
PACT, Bangladesh	0.02
Philippine-German Chamber Cooperative Program	0.01
Redd-Barna, Nepal	0.01
Redd-Barna, Thailand	0.02
Sweroad-Laos PDR	0.03
Thai-German Project Management Consultancy	0.01
World Concern Korea	0.01
World Council of Churches	0.02
World Vision of Bangladesh	0.04

Private and Others	0.14
Sub-total	10.67
Total	100.00

ALUMNI AFFAIRS

Distinguished Alumni Award

The Distinguished Alumni Award recognizes alumni contributions to development at the community, national and regional levels. Deserving alumni will be selected from the following categories: rural development, public sector, business, academic and research excellence, and international affairs.

The nomination and selection of alumni will be based on criteria to be formulated by the AITAA Executive Committee in collaboration with the AITAA Chapters.

THE AIT ALUMNI - the pride, honor and success of the Institute

Since the first graduation in 1961, AIT has produced over 6,000 graduates from 33 countries. The more senior of them have established and accomplished careers in government and the private sector. The majority live in Asia and are directly engaged in the development of the region, as government officials and administrators, educators, officials of international organizations and NGOs, and managers in the trade, business and industry sectors. Many have become entrepreneurs, others have entered politics and are now recognized leaders in their respective countries.

The AIT Alumni Association places the greatest priority on strengthening its communication links with all alumni, directly or through the 17 AITAA Chapters. From its new offices in the Administration Building at AIT, the AITAA Secretariat sees to the task of mobilizing alumni support for the work of the Institute, and promoting the Association among presently enrolled students. At the Institute, a tradition of "gift-giving to AIT" was introduced in 1992 among the graduating classes in April, September and December. Conducting a variety of fund-raising activities, they collected over 25,000 Baht and presented the amount as their first gift to their Alma Mater.

The renewed and revitalized interest in AITAA, among the alumni and students, is evident. AITAA membership is on the rise, with 68 per cent of all AIT students joining the Association upon graduation. The increase provides a healthy outlook for AITAA. This augurs well for the Association's future.

TALKING TO AIT ALUMNI

Whether in the service of their governments or as self-employed entrepreneurs in their home countries, the AIT alumni are making significant contributions to the development of Asia.

Mr. Laxman Prasad Ghimire (CRD '72) is the State Minister for Water Resources in Nepal. A successful self-employed entrepreneur, prior to entering politics, Mr. Ghimire, together with three colleagues from the Road Department in the Ministry of Works and Transport, founded East Consult (P) Ltd. 20 years ago, turning it into one of Nepal's largest consulting firms engaged in irrigation works, socio-economic studies and other development-related topics. Mr. Ghimire is the founding President of AITAA-Nepal Chapter.

Prof. Pham Phu (WRE '82) of Vietnam has been elected Member of Parliament representing Ho Chi Minh City. Prof. Phu is also Chairman of the Division of Industrial Management at Ho Chi Minh Polytechnic University. He has been actively supporting AIT in the establishment of the Institute's Swiss-funded management development project in Ho Chi Minh City.

Worthy causes, such as the education of promising Asians, has benefited from the support given by AIT alumni. In her capacity as President of AITAA-Thailand, **Mrs. Chuanpit Dhamasiri (EE '68)**, Deputy Governor of the Metropolitan Waterworks Authority, donated a grant to the Queen Sirikit Scholarship for Asian Environmental Development Program, which was established by AIT on the occasion of Her Majesty the Queen's 60th birthday. **Mr. S. J. Lee (EE' 75)**, President of Super Max Engineering Co. Ltd., also donated a grant.



Her Majesty the Queen receiving scholarship grants from Mrs. Chuanpit, representing AITAA-Thailand, and Mr. Lee, representing Super Max Engineering Co. Ltd.



Mr. Ghimire



Prof. Phu

AITAA Governing Board Meeting

The 21st Annual Meeting of the AITAA Governing Board was hosted by AITAA-Japan. It was held on March 13 to 17, 1992 at the Overseas Vocational Training Center in Tokyo. The next Governing Board meeting will be held in Hong Kong and will be hosted by the AITAA-Hong Kong/Macau Chapter.

The establishment of a Distinguished Alumni Award was proposed at the 21st annual meeting of the AITAA Governing Board. The meeting was attended by the Executive Committee of AITAA together with representatives from 11 national chapters of AITAA.

The meeting also raised the need for guidelines for the allocation of interest generated from the AITAA Endowment Fund and the investment of AITAA reserve funds. So far, 35 alumni have contributed a total of 362,583.72 Baht to the Fund. An additional 120,751 Baht have been pledged.



Group photo of delegates to the AITAA Governing Board Meeting in Tokyo.

AITAA PROJECTS

SUPPORTING STUDENT RESEARCH

To supplement research funds made available by the academic divisions, AITAA awards grants to a number of students to cover air travel and incidental expenses related to investigation and data collection. The 1991-92 awards were presented in September 1991 and September 1992.

The September 1991 recipients were GTE students, Ms. San San Win (Burmese) and Mr. Liang Xin (Chinese), and EE student, Mr. Tajuddin Bantacut (Indonesian). The three graduated in April 1992. Another recipient, IEM student Dr. Nguyen Luong Bach (Vietnamese), graduated in December 1992. The September 1992 recipients were GTE student Ms. Cherry Clarissa Ramientas (Filipino), a candidate for graduation in April 1993, and AFE Doctoral student Mr. Nguyen Tang Ton (Vietnamese).

The AITAA research grants are worth a maximum of 600 US dollars each.

BUILDING CAREERS

Alumni Recruiter Program

Individual alumni, serving as contact points, are assisting AITAA Chapters in disseminating information on AIT and establishing "student feeder" organizations. Particular attention is given to information on AIT's admission requirements. This program is actively pursued by AIT alumni in Pakistan, the People's Republic of China, and India.

Alumni Credential Files

To assist new graduates, AITAA sponsors recruitment programs for companies based in Thailand and overseas. In 1992, business companies from Singapore and Chinese Taipei, as well as Thailand, conducted job placement tests and interviews on campus. Graduating students are encouraged to open credential files with the AITAA Secretariat. These will be used as reference for job placement opportunities.

PUBLICATIONS

AITAA Who's Who

The AITAA Who's Who is in the final stages of preparation. It will include alumni who satisfy the publication's criteria concerning their contributions to national development, academic and professional achievements, awards and decorations received, career/employment record, and political involvement. Former and incumbent AITAA Chapter Presidents are listed in the publication.

1992 Alumni Directory

The updated AIT Alumni Directory, covering a total of 5911 graduates from 1961 to December 1992, will be released in February 1993.



AITAA CHAPTER PRESIDENTS

AUSTRALIA

Dr. Victor A. Pulmano (SEC '62)
School of Civil Engineering
University of New South Wales

BANGLADESH

Mr. Karimul Haque Talukdar
(WRE '71)
Project Officer,
ADB Resident Office, Dhaka

BRUNEI

Mr. Yong Foh Fui (EE '75)
District Water Engineer
Water Section, Public Works Dept.

CHINESE TAIPEI

Mr. George S.Y. Chen (CRD '72)
Director General, Highway Bureau

HONG KONG/MACAO

Mr. Ted T.C. Chan (CRD '76)
Managing Director
TESCO, Causeway Bay
Hong Kong

INDIA

Dr. Ashok Kumar Gupta (CRD '71)
Professor and Coordinator
Transportation Engineering
University of Roorkee

INDONESIA

Mr. Martsanto Dirdjoseoprpto
(WRE '90)
Deputy Head Officer
Riau Development Coordinating
Office

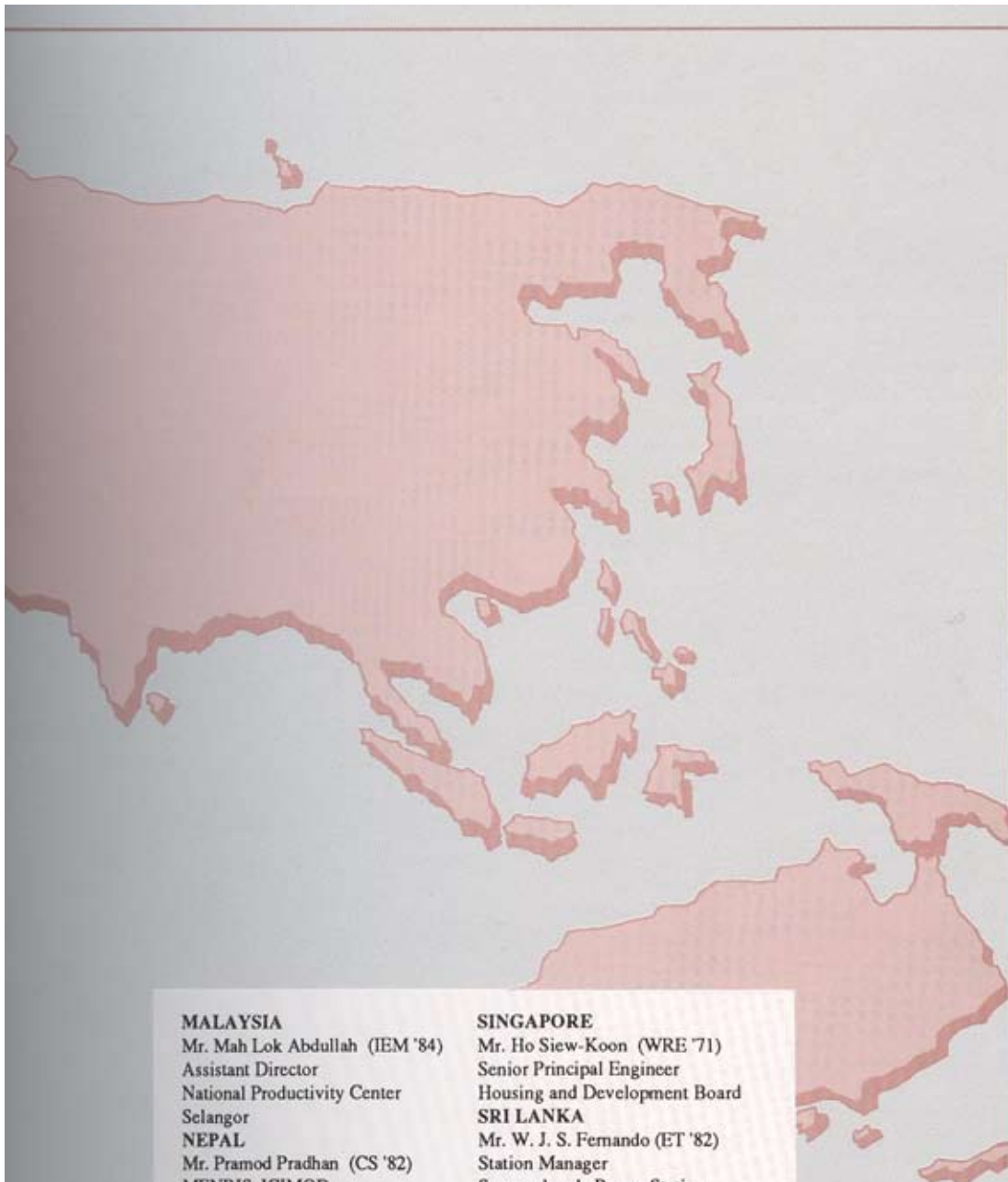
Ministry of Public Works

JAPAN

Mr. Naoki Tanaka (GTE '85)
Project Engineer
Japan Highway Public Corp.
Miyamae-Ku, Kawasaki-Shi

REPUBLIC OF KOREA

Dr. Seung-Hwan Lee (IEM '75)
Professor
Transportation Engineering Dept.
Ajou University



**ALUMNI DISTRIBUTION
1961 - 1992**

Southeast Asia and Pacific	
Bhutan	2
Brunei	8
Cambodia	3
Fiji	1
Indonesia	291
Laos	7
Maldives	1
Malaysia	256
Myanmar	95
PNG	6
Philippines	627
Singapore	28
Thailand	1420
Vietnam	176
East Asia	
PRC	149
Chinese Taipei	684
Hong Kong	84
Japan	49
RoK	96
Macao	5
South and West Asia	
Afghanistan	26
Bangladesh	405
Egypt	1
India	424
Iran	12
Nepal	280
Pakistan	436
Sri Lanka	457
Turkey	6
North America, Europe and Africa	
Canada	4
Ethiopia	1
France	3
Germany	1
Ghana	2
Honduras	1
Kenya	1
Malawi	2
Netherlands	1
Sweden	1
Tanzania	7
United Kingdom	2
USA	7
Stateless	1

MALAYSIA

Mr. Mah Lok Abdullah (IEM '84)
Assistant Director
National Productivity Center
Selangor

NEPAL

Mr. Pramod Pradhan (CS '82)
MENRIS, ICIMOD
Kathmandu

PAKISTAN

Mr. Iqtidar A. Chaudhri
(WRE '64)
Managing Director
Delta Tyre and Rubber Co. Ltd.
Islamabad

PHILIPPINES

Mr. Edgar Ortega (WRE '76)
Vice President
DCCD Engineering Corp.
Metro Manila

SINGAPORE

Mr. Ho Siew-Koon (WRE '71)
Senior Principal Engineer
Housing and Development Board

SRI LANKA

Mr. W. J. S. Fernando (ET '82)
Station Manager

Sapugaskanda Power Station
Heiyantuduwa

THAILAND

Mrs. Chuanpit Dhamasiri (EE '68)
Deputy Governor (Engineering)
Metropolitan Waterworks Authority
Bangkok

USA

Dr. Rakesh Sarman (GTE '80)
Consulting Engineer,
Geologist/Geophysicist
Hinsdale, Illinois

CENTRAL ADMINISTRATION

COMPUTERIZATION OF CENTRAL ADMINISTRATION FUNCTIONS

As part of the campus-wide computerization of administrative operations, a local area network (LAN) was set up in the Physical Plant Department.

In the Finance Department, computer software upgrades improved cashier functions and the monitoring of the scholarship program. Starting in January 1992, scholarship statements were prepared on a per-term basis. Relevant computer training was provided to all Finance staff concerned.

Major changes are envisaged in 1993, as a result of the migration to the DEC minicomputer from the mainframe and the accompanying migration of financial software systems.

The installation of a computerized payroll system linked to the human resources management information system of the Personnel Section is expected to be completed in 1993.

NEW FACILITIES AND SERVICES

Efforts to improve the Institute's water and electric power supply resulted in the installation of a new bore hole pump and a new chiller machine with a 500-ton capacity. The new chiller was installed in September 1992, significantly reducing energy consumption on campus.

Two new generators, each with a capacity of 850 KW, were added raising the total available in house power to 3300 KW. The new generators should meet the energy demands of all the academic units, in case of power interruptions.

Fourteen general-use vehicles were purchased without any burden on the AIT budget. These vehicles will be self-paying.

Further improvements are planned. Under consideration are the installation of additional generators to provide emergency power for all residents on campus (in case of power interruptions), a better water treatment facility, and a new automatic fire alarm system.

The Petroleum Authority of Thailand is planning to set up a petrol station on campus, providing fuel products at discounted rates to AIT.

ANNUAL USER SURVEY

The 1992 annual user survey of services provided by offices under Central Administration showed general concern for campus security. It noted improvements in services provided by the Instrumentation Unit, Electrical and Airconditioning Section, 24-Hour Service Section, Cafeteria and Telecommunications Section. The Finance Department, which was included in the survey for the first time, received the highest overall rating.



Maintenance of the campus grounds, motor pool operations and supervision of housing and accommodation facilities are major central administration functions.

CAMPUS DEVELOPMENT

CONSTRUCTION PROJECTS COMPLETED

Construction of ten three-bedroom townhouses and the AIT Center Annex was completed. The AIT Center now has a total of 117 guest rooms.

Construction work in the Administration Building included the renovation of the Registry and the addition of a second floor to the middle section of this building to provide office space for Academic Affairs and Development staff.

The GTE and EE laboratories were also renovated.



Left: The middle section of the Administration Building prior to the addition of a second floor (above). Below: The AIT Center annex and its beautiful gardens.



Left: The expanded Registry office.

CONSTRUCTION PROJECTS IN PROGRESS AND PROPOSED

Biotechnology Building

Funding: Various sources of donation, to fund the basic building shell, special utility works, and installation of equipment.

Target completion date: August 1993

Squash Court

Located near the sports pavilion on the west side of the AIT campus, the squash court will be built to practice court standard.

Funding: Grants from Pakistan and AIT.

Target completion date: April 1993.

ST-7 Staff/Faculty Housing

ST-7 will consist of two blocks, A and B. Block A will have six one-bedroom apartments, 12 two-bedroom apartments and six three-bedroom apartments. Block B 24 will provide 24 studio/bedroom units and 42 bachelor's units.

Funding: 35 million Baht (Internal loan from General Reserve to Housing Reserve)

Target completion date: September 1993.

Extension of WRE Office

The Water Resources Engineering offices will be extended north of the hydraulic laboratory and will be linked by a footbridge to existing offices. The new Irrigation Engineering and Management offices on the ground floor will be

given direct access to the hydraulic laboratory. The building will occupy a total area of 950 to 1,000 sq.m.

Funding: 12 million Baht from the Royal Thai Government.

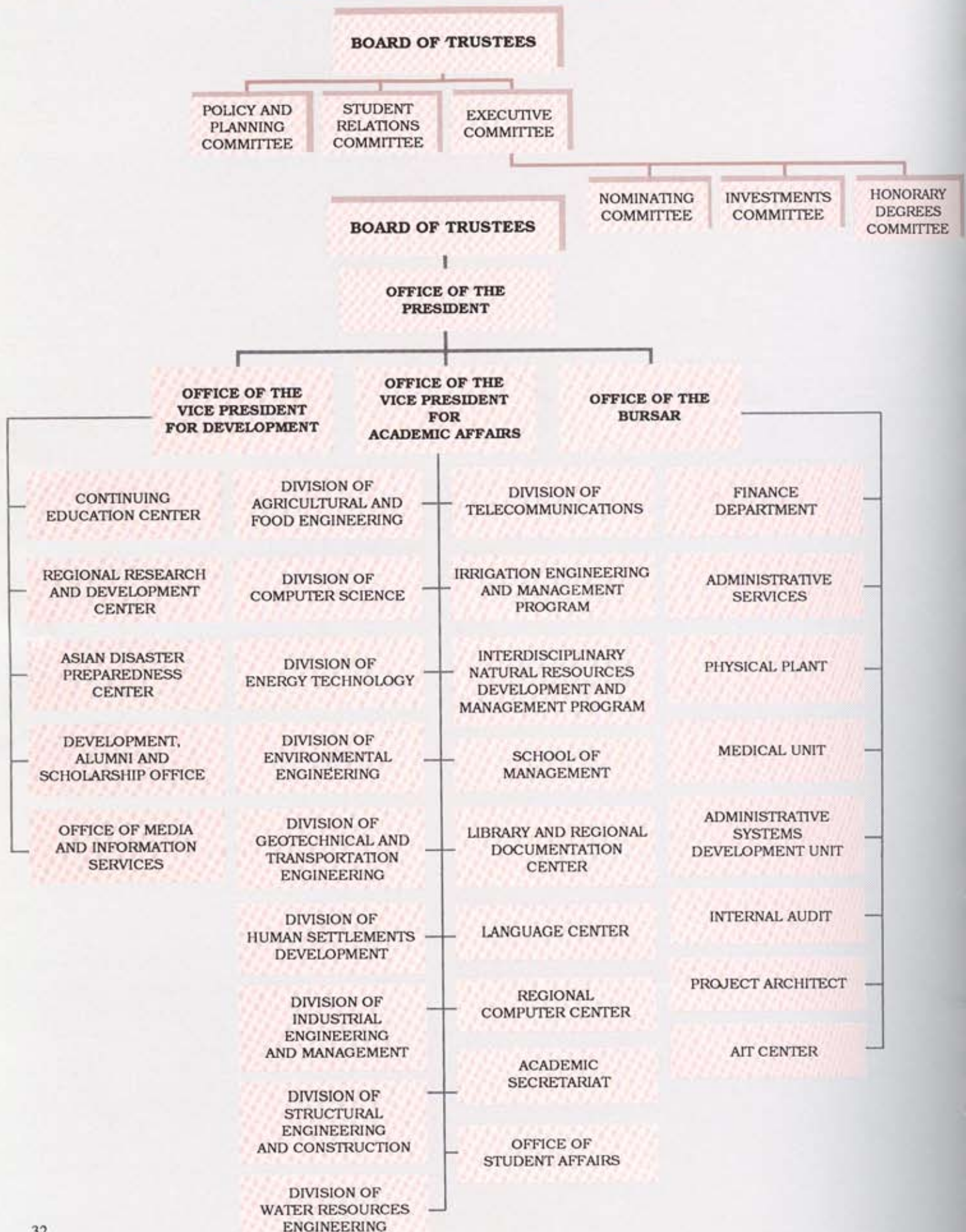
Schedule for tender: January 1993.

CIM - Laboratory

The proposed building will accommodate the Computer Integrated Manufacturing laboratory and classrooms and offices for the Division of Industrial Engineering and Management Program.

Proposed building area: 1,100 sq.m.

ORGANIZATIONAL CHART OF THE ASIAN INSTITUTE OF TECHNOLOGY



1992 INSTITUTE ADMINISTRATION

SENIOR ADMINISTRATIVE OFFICERS

President	Prof. Alastair M. North
Vice President for Academic Affairs	Prof. Ricardo P. Pama
Vice President for Development	Dr. Suvit Yodmani
Bursar	Mr. Edward Mayer
Academic Secretary	Dr. Roger Hawkey

DIVISION CHAIRMEN

Agricultural and Food Engineering	Dr. C.Kwei Lin
Computer Science	Prof. Huynh Ngoc Phien
Energy Technology	Prof. R.H.B. Exell
Environmental Engineering	Mr. Hans Schroder
Geotechnical and Transportation Engineering	Dr. Yusuke Honjo
Human Settlements Development	Dr. A.T.M. Nurul Amin
Industrial Engineering and Management	Prof. P.C. Pandey
Structural Engineering and Construction	Prof. Yukio Aoyagi
Telecommunications	Prof. A.B. Sharma
Water Resources Engineering	Prof. Ricardo Harboe
School of Management	Dr. Patrick Gougeon (Director)

COORDINATORS OF INTERDISCIPLINARY PROGRAMS

Irrigation Engineering and Management	Mr. Rainer Loof
Natural Resources Development and Management	Dr. Laurence A.G. Moss

CENTER DIRECTORS

Asian Disaster Preparedness Center	Mr. Terry Jeggle
Continuing Education Center	Dr. Nicanor C. Austriaco
Library and Regional Documentation Center	Mr. Arthur Vespy
Regional Computer Center	Dr. Charoon Chirapaisarnkul
Regional Research and Development Center	Dr. Suvit Yodmani (in charge)
Language Center	Mr. Matthew Laszewski (Chairman)

STUDENT AFFAIRS

Dean of Student Affairs	Prof. R.H.B. Exell
Student Union President	Mr. Chaivatna Sumetphong
	Mr. Shaunak Ashtaputre

Prof. Pama, appointed April '92, succeeding Prof. Helmut Eggers
 Dr. Suvit, appointed May '92, succeeding Prof. Ricardo P. Pama
 Dr. Kwei-Lin, appointed July '92, succeeding Dr. Sarath Ilangantileke
 Prof. Phien, appointed September '92, succeeding Dr. Vilas Wuwongse
 Prof. Aoyagi, appointed August '92, succeeding Prof. Worsak
 Dr. Moss, appointed September '92, succeeding Dr. Howard Daugherty
 Mr. Jeggle, appointed November '92, succeeding Lt. Col. Brian Ward (Ret.)
 Dr. Suvit, in-charge May '92, succeeding Mr. Prida Thimakorn
 Mr. Chaivatna, succeeding Mr. Wu Tern Siang, who served as SU President
 from May '92-December '92.
 Mr. Shaunak Ashtaputre, succeeding Mr. Chaivatna, will serve as SU President
 from January '93- August '93

1992 BOARD OF TRUSTEES

H.E. Mr. C. Christian W. Adams CMG (1995)

Ambassador Extraordinary and
Plenipotentiary
British Embassy
Bangkok, Thailand

Mr. Robert C. Bodden (1995)

President
AIT Foundation Inc.
USA

Mr. Pandit Bunyapana (1995)

Permanent Secretary for Finance
Royal Thai Government
Bangkok, Thailand

Prof. Khunying Nongyao Chaiseri (1993)

Former Rector
Thammasat University
Bangkok, Thailand

Mr. Pin Chakkaphak (1995)

President and Director
Finance One Ltd.
Bangkok, Thailand

Prof. Ashoka Chandra (1993)

Director
Institute of Applied Manpower Research
New Delhi, India

Prof. Srisakdi Charmonman (1993)

(Ex-officio)
President, AITAA
Bangkok, Thailand

Mr. Arthur Y. Chen (1993)

President
Ret-Ser Engineering Agency
Chinese Taipei

Dr. Chow Chowkwanyun (1995)

Founder
Education and Public Welfare Foundation
Bangkok, Thailand

H.E. Mr. Johan H. Dahl (1995)

Ambassador Extraordinary and
Plenipotentiary
Royal Norwegian Embassy
Bangkok, Thailand

Mr. John Gunther Dean (1995)

Former US Ambassador to Thailand
Paris, France

HDC **H.E. Mr. Gerard Fonjallaz** (1993)

Ambassador Extraordinary and
Plenipotentiary
Embassy of Switzerland
Bangkok, Thailand

H.E. Mr. Hiroaki Fujii (1995)

Ambassador Extraordinary and
Plenipotentiary
Embassy of Japan
Bangkok, Thailand

EC **Prof. D.W. George, AO** (1993)

PPC *Vice-Chairman*
SRC Former Vice Chancellor
University of Newcastle, N.S.W.
Australia

EC **The Hon. Cheng Hon-Kwan, OBE** (1993)

Member
Executive and Legislative Council
Hong Kong

Dr. John A. Hrones (*Life member*)

Provost Emeritus
Case Institute of Technology
USA

HDC **H.E. Mr. Mogens Knud Isaksen** (1994)

Ambassador Extraordinary and
Plenipotentiary
Royal Danish Embassy
Bangkok, Thailand

EC **Prof. Pisidhi Karasudhi** (1995)

PPC Faculty Representative
Asian Institute of Technology

Prof. Musharrif Husain Khan (1994)

Member
University Grants Commission
of Bangladesh
Dhaka, Bangladesh

EC **Dr. Thanat Khoman** (1993)

PPC *Chairman*

HDC Former Deputy Prime Minister
Royal Thai Government
Bangkok, Thailand

Mr. Kiyooki Kikuchi (1993)

Advisor
Matsushita Electric Industrial Co. Ltd.
Tokyo, Japan

Dr. Jeffrey L. S. Koo (1995)

Chairman and Chief Executive Officer
China Trust Co. Ltd.
Chinese Taipei

EC **Prof. Ir. B. Krol** (1994)

PPC Professor
SRC Dept. of the Science of Food and
Animal Origin
Utrecht University
The Netherlands

SRC **Prof. Dina M. Lavoie** (1994)

Professor
School of Advanced Commercial Studies
University of Montreal
Canada

SRC **Dr. Sang-Soo Lee** (1993)

President
Korea Advanced Institute of
Science and Technology
Seoul, Republic of Korea

- Dr. Oscar B. Mapua (*Life member*)
President
Mapua Institute of Technology
Manila, Philippines
- H.E. Mr. John Philip McCarthy (1995)
Ambassador Extraordinary and
Plenipotentiary
Australian Embassy
Bangkok, Thailand
- Mr. Sukum Navapan (1995)
Chairman
Navatane Group of Companies
Bangkok, Thailand
- H.E. Mr. Jean-Marie Noifalisse (1995)
Ambassador Extraordinary and
Plenipotentiary
Royal Belgian Embassy
Bangkok, Thailand
- EC Prof. Alastair M. North (*Ex-officio*)
PPC President
HDC Asian Institute of Technology
- EC Prof. Ricardo P. Pama (*Ex-officio*)
PPC Vice President for Academic Affairs
SRC Asian Institute of Technology
- EC H.E. Mr. Anand Panyarachun (1993)
Former Prime Minister
Royal Thai Government
Bangkok, Thailand
- EC H.E. Mr. Arthur C. Perron (1995)
PPC Ambassador Extraordinary and
Plenipotentiary
Canadian Embassy
Bangkok, Thailand
- EC H.E. Baron Berthold von Pfetten-
Arnbach (1994)
Ambassador Extraordinary and
Plenipotentiary
German Embassy
Bangkok, Thailand
- Mr. Earl N Phillips, Jr (1995)
President
First Factors Corporation
USA
- PPC Dr. Wolf Preuss (1995)
Deputy Director General (Asia)
Federal Ministry for Economic
Cooperation
Bonn, Germany
- Prof. Dr. Ratna S. J. B. Rana (1993)
Member
Center for Economics Development
and Administration
Tribuvan University
Kathmandu, Nepal
- SRC Dato Dr. Mohd Mansor Salleh (1994)
Director
MARA Institute of Technology
Malaysia
- H.E. Mr. Eero Kalevi Salovaara (1995)
Ambassador Extraordinary and
Plenipotentiary
Embassy of Finland
Bangkok, Thailand
- Dr. Noranit Setabutr (1995)
Rector
Thammasat University
Bangkok, Thailand
- EC Prof. Hiroyoshi Shi-igai (1995)
PPC Professor
SRC Institute of Engineering Mechanics
University of Tsukuba
Tsukuba City, Japan
- SRC Dr. Soedjatmiko (1993)
Director
Institute of Agricultural Engineering
Ministry of Agriculture
Jakarta, Indonesia
- Mr. Jean-Marcel Soulier (1995)
Former Ambassador of France to
Thailand
Landes, France
- PPC Prof. Charas Suwanwela (1995)
President
Chulalongkorn University
Bangkok, Thailand
- Dr. Vichai Tunsiri (1995)
Secretary-General
Office of the National Education
Commission
Bangkok, Thailand
- Dr. Phaichitr Uathavikul (1994)
Former Minister of Science, Technology
and Energy
Royal Thai Government
Bangkok, Thailand
- EC Dr. Snoh Unakul (1994)
Former Deputy Prime Minister
Royal Thai Government
Bangkok, Thailand
- Dr. Puey Ungphakorn (*Life member*)
Former Governor
Bank of Thailand
London, UK
- EC HDC H.E. Mr. Georges-Emile Vinson (1993)
Ambassador Extraordinary and
Plenipotentiary
Embassy of France
Bangkok, Thailand
- Prof. Zhong Lie Wang (1994)
Director
State Education Commission
Beijing, People's Republic of China
- Prof. Dayantha Wijeyesekera (1995)
Vice Chancellor
Open University of Sri Lanka
Nawala, Nugegoda
Sri Lanka
- Mr. Haydn Williams (1995)
Former President
Asia Foundation
USA
- Secretary: Dr. Roger Hawkey
Asian Institute of Technology

Note: () end of current term of office
EC = Executive Committee
SRC = Student Relations Committee
PPC = Policy and Planning Committee
HDC = Honorary Degrees Committee

December 1992

LIST OF FACULTY MEMBERS

FULL TIME FACULTY

A. T. M. Nurul Amin
B.A. (Hons.), M.A., Dhaka;
M.A., Ph.D., Manitoba.
Associate Professor, HSD

Yukio Aoyagi
B.Eng., M.Eng., D. Eng., Univ. of Tokyo.
Professor, SEC

Ray W. Archer
B.A. (Hons), Sydney; M.R.A.P.I.
Associate Professor, HSD

David Arditi
B.S., M.S., Middle East Tech. Univ.,
Turkey; Ph.D., Loughborough, UK.
Associate Professor, SEC

Josef Aschbacher
B.Sc., M.Sc., Ph.D., Innsbruck, Austria.
Assistant Professor, INRDM

A.S. Balasubramaniam
B.Sc., Ceylon; Ph.D., Cambridge.
Professor, GTE

Bengt-Erik U. Bengtsson
B.Sc., M.Sc., Ph.D., Umea.
Associate Professor, INRDM

Dennes T. Bergado
B.S.C.E., Mindanao State; M. Eng., AIT;
Ph.D., Utah State.
Associate Professor, GTE

S.C. Bhattacharya
M.E., Roorkee; Ph.D., Cambridge.
Associate Professor, ET

Erik Bohez
M.Eng., State Univ., Ghent, Belgium.
Assistant Professor, IEM, CS

Ronald Boyle
B.A., Leicester, UK.; M.A., McMaster;
PGCE, London; M.Sc., Aston.
Assistant Professor, LC

Surapong Chirarattananon
B.Eng., UNSW; M.Eng.Sc., Monash;
D. Phil., Newcastle.
Associate Professor, ET

Terry Clayton
B.A., Acadia; B.Ed., Mount Saint
Vincent; M.Sc., Rutgers.
Assistant Professor, LC

Ashim Das Gupta
B.E., Gauhati; M.Eng., D.Eng., AIT.
Professor, IREM, WRE

Howard E. Daugherty
B.A., Wyoming; M.A., Illinois;
Ph.D., California (UCLA).
Associate Professor, INRDM

Jean-Pierre Delsol
B.Sc., C.E.S.S., D.E.A., Ph.D.,
Paris VIII University.
Associate Professor, INRDM

Harvey Demaine
B.A. (Hons.), Oxford; M.Sc., Ph.D., London.
Associate Professor, HSD

Hiran D. Dias
M.A., Ph.D., Cambridge.
Professor, HSD

Phan Minh Dung
M.Sc., Ph.D., Univ. of Tech., Dresden.
Assistant Professor, CS

David Joel Edelman
B.A., Rochester; M.R.P., Ph.D., Cornell.
Associate Professor, ET

Peter Edwards
B.Sc., Liverpool; Ph.D., Texas.
Research Professor, AFE

Helmut Eggers
Dipl.Ing.; Dr.Ing., TH Karlsruhe.
Professor, WRE

Apisit Eiumnoh
B.Sc., Kasetsart; M.Sc., Sheffield;
Ph.D., North Carolina State.
Associate Professor, INRDM

R.H.B. Exell
M.A., D. Phil., Oxford.
Professor, ET

Shigeo Fujii
B.Eng., M.Eng., D.Eng., Kyoto.
Assistant Professor, EE

Okitsugu Fujiwara
B.S., M.S., Osaka; M.S., Stanford;
Ph.D., Yale.
Professor, IEM

A. Fukuda
B.Eng., M.Eng., D.Eng., Nihon.
Assistant Professor, GTE

Joseph A. Gartner
B. Sc., Queensland; Ph.D., Reading.
Associate Professor, AFE

David Gee-Clough
B.Sc., M.E., Wales; M.S., Cal. Tech.;
Ph.D., California (Davis).
Professor, AFE

HONORARY FACULTY

Her Royal Highness Princess
Maha Chakri Sirindhorn is an
Honorary Faculty Member of the
Institute. Her Royal Highness is
associated with the Interdisciplinary
Natural Resources Development and
Management Program and with the
Remote Sensing Laboratory.

Chandra P. Gupta
B.Sc., Agra; B.Tech., M.Tech.,
Ph.D., IIT (Kharagpur).
Professor, AFE

Michael Hall
Dipl.Ing., Lic.Tech. (Ph.D.), Helsinki.
Assistant Professor, TC

Ricardo Harboe
Civil Eng., Univ. of Chile; M.S., Ph.D.,
UCLA, USA, Habilitation, Ruhr-Universi-
ty, Bochum, Germany.
Professor, IREM, WRE

Ellen Hertzberg
B.A., Oslo, Norway; B.Sc., Bremen,
Germany; M.Sc., Ph.D., Strathclyde, UK.
Assistant Professor, SOM

Peder Hjorth
B.Sc., Lund; M.Sc., Chalmers;
Ph.D., Lund, Sweden.
Associate Professor, WRE

Kazunori Hokao
B.Eng., Nagasaki;
M.Eng., D.Eng., Waseda.
Associate Professor, GTE

Yusuke Honjo
B.Eng., NIT (Nagoya); M.Eng., Kyoto;
S.M., Ph.D., MIT.
Associate Professor, GTE

Tsukasa Hosomura
B.S., Nagoya Inst. of Tech.;
M.S., Ph.D., Tokyo Inst. of Tech.
Associate Professor, CS

Sarath G. Ilangantileke
B.Sc., Ceylon; M.S., Ph.D., Michigan.
Associate Professor, AFE

Buddhima Indraratna
B.Sc. (Hons.), A.C.G.I.,
M.Sc., D.I.C., London; Ph.D., Alberta.
Assistant Professor, GTE

Vinod K. Jindal
B.Sc.A.E., Pantnagar; M.S., Nebraska;
Ph.D., Pennsylvania State.
Professor, AFE

Gian Jiaru

Tsinghua Univ., Beijing, China.
Assistant Professor, SEC

Hans Detlef Kammeier

Dipl. Ing., Reg. Bmstr, Munich.
Associate Professor, HSD

Kanchana Kanchanasut

P.Sc., Dip. Comp. Sc., Queensland;
M.Sc., Ph.D., Melbourne.
Assistant Professor, CS

Worsak Kanok-Nukulchai

B.Eng.(Hons.), Chulalongkorn;
M.Eng., AIT; Ph.D., California (Berkeley).
Professor, SEC

Pisidhi Karasudhi

B.Eng., Chulalongkorn;
M.Eng., Chulalongkorn-SEATO
Graduate School; Ph.D., Northwestern.
Professor, SEC

Brian R. Kenny

LTCL; M.A., Sussex; Dip. TESOL, London.
Associate Professor, LC

Kiyoshi Koga

B.Agr., M. Agr., D. Agr., Univ. of Tokyo.
Associate Professor, IREM, AFE

Yasuyuki Kono

B. Agr., M.Agr., D.Agr., Univ. of Tokyo.
Assistant Professor, IREM

Matthew Laszewski

B.A., M.A., Wisconsin-Madison.
Assistant Professor, LC

Bernard G. Lefebvre

B.Sc.Arch., B.Arch., M.Arch., McGill;
M.Sc.Adm., Quebec.
Associate Professor, HSD

Thierry Lefevre

Ing. ESME Paris; Ph.D., Toulouse.
Associate Professor, ET

C. Kwei Lin

B.Sc., Chung Hsin, Chinese Taipei;
M.Sc., Alberta; Ph.D., Wisconsin.
Associate Professor, AFE

David C. Little

B.Sc., Liverpool; M.Sc., Ph.D., Stirling.
Assistant Professor, AFE

Steffen Lochmann

Dipl. Ing., Dresden;
Dr. Ing., Humboldt, Berlin.
Assistant Professor, TC

Rainer Loof

Dipl. Ing., Technical Univ., Hannover.
Associate Professor, IREM, WRE

J.E. Lukens

B.S.C.E., Worcester Polytechnic Inst.;
Ph.D., Cornell.
Associate Professor, INRDM

Ragnhild Lund

Cand.Philol. of Geography,
University of Bergen.
Associate Professor, HSD

Koichi Maekawa

B.E., M.E., D.E., Tokyo.
Associate Professor, SEC

Brahmanand Mohanty

B.Sc., S.A.I.C.E.;
M.Sc., AIT; Ph.D., Toulouse.
Assistant Professor, ET

Jean Claude Mora

Ing., Ph. D., D. Sc., INP, Toulouse.
Professor, ET

Hiroshi Mori

B.Eng., M.Eng., D.Eng., Tokyo.
Associate Professor, GTE

Laurence A.G. Moss

B.A., Univ. of British Columbia; M.C.P.,
M.A., Ph.D., Univ. of California (Berkeley).
Associate Professor, INRDM

Alan R. Murch

Ph.D., Univ. of Canterbury, New Zealand.
Assistant Professor, TC

V.V.N. Murty

B.Tech. (Hons.), M.Tech., IIT (Kharagpur);
Ph.D., California (Davis).
Professor, IREM, AFE

Samorn Muttamara

B.Sc., Chulalongkorn; M.S., Oregon State.
Associate Professor, EE

Nagendra N. Nagarur

B.Tech., REC Warangal; M.S., Wichita
State; Ph.D., Virginia Polytechnic.
Assistant Professor, IEM

Fumihiko Nakamura

B.Eng., M.Eng., D.Eng., Tokyo.
Assistant Professor, HSD

Jens Moller Nielsen

M.Sc., Ph.D., D.Sc.,
Royal Vet. Ag. Univ., Copenhagen.
Professor, IREM, AFE

Pichai Nimityongskul

B.Eng., Chulalongkorn;
M.Eng., D.Eng., AIT.
Associate Professor, SEC

Athapol Noomhorm

B.Sc., Kasetsart; M.Eng., Texas;
Ph.D., Louisiana State.
Associate Professor, AFE

Alastair M. North

B.Sc., Aberdeen; Ph.D., Birmingham.
Chair Professor in Applied Science

Kaew Nualchawee

B.S., Chulalongkorn; M.S., Connecticut;
Ph.D., Colorado State.
Associate Professor, INRDM

Prinya Nutalaya

B.A., M.S., Ph.D., Colorado.
Professor, GTE

Timothy O'Farrell

M.Sc., Ph.D., Victoria Univ. of Manchester.
Assistant Professor, TC

Stephen O. Ogunlana

B.Sc., M.Sc., Ife, Nigeria;
Ph.D., Loughborough, UK.
Assistant Professor, SEC

Dirk L. van Oudheusden

B.S., State Univ., Antwerp;
M.S., Ph.D., Free Univ., Brussels.
Professor, IEM

Ricardo P. Pama

B.S.C.E., Mapua Inst. of Tech.;
M.Eng., Chulalongkorn-SEATO
Graduate School; Ph.D., St. Andrews.
Professor, SEC

P.C. Pandey

B.Sc.Eng., Banaras Hindu;
P.G.Dipl., King's College; Ph.D.,
Nottingham.
Professor, IEM

Rene Parenteau

B.A., M.A., Laval; Ph.D., Univ. of Provence.
Professor, HSD

Huynh Ngoc Phien

B.Sc., B.A., Hue; M.Sc., D.Tech.Sc., AIT.
Professor, CS

Noppadol Phienwej

B.Eng. (Hons.), Chulalongkorn;
M.S., Ph.D., Illinois, Urbana-Champaign.
Associate Professor, GTE

Chongrak Polprasert

B.Eng., Chulalongkorn; M.Eng., AIT;
Ph.D., Washington.
Professor, EE

K. Ramanathan

B.Sc. (Eng.), Ceylon;
Post Grad. Dip. in Applied Stats., Colombo;
M.Eng., D.Eng., AIT.
Associate Professor, SOM

Lars B. Reutergardh

M.Sc., Ph.D., Stockholm, Sweden.
Associate Professor, EE

J.K. Routray

B.Sc. (Hons), M.Sc., Utkal;
M.R.P., IIT, Kharagpur; Ph.D., Utkal.
Assistant Professor, HSD

R. Sadananda

B.E., Mysore; M.E., Roorkee;
Ph.D., IIT, Kanpur.
Associate Professor, CS

Khalid Saeed

B.Sc.Eng., U.E.T., Lahore;
M.Eng., AIT; Ph.D., MIT.
Professor, INRDM

Vilas M. Salokhe

B.Tech., Mahatma Phule;
M.Eng., Sukhadia; D.Eng., AIT.
Associate Professor, AFE

William Savage

B.S.Eng., Texas A&M; M.A., Hawaii.
Assistant Professor, LC

Hans Schroder

M.Sc., Technical Univ. Denmark.
Associate Professor, EE

Tian Ho Seah

B.Sc., London; Sc.D., MIT.
Assistant Professor, GTE

N. Sharif

B.Sc., BUET; M.E.A., George
Washington; Ph.D., Texas A & M.
Professor, SOM

A.B. Sharma

B.Sc. (Hons.), Newcastle-upon-Tyne, UK;
Lic.Tech., D.Tech., Helsinki.
Professor, TC

Jonathan Shaw

Dip.Ed., Manchester; LLB., London.
Instructor, LC

Toshikazu Shimazaki

B.Eng., M.Eng., D.Eng., Tokyo;
M.Sc., Stanford.
Associate Professor, GTE

R.M. Shrestha

B.E., M.S.U., Baroda;
B.L., Tribhuvan; M.Eng., D.Eng., AIT.
Assistant Professor, ET

Gajendra Singh

B.Sc.A.E., Pantnagar; M.S., Rutgers;
Ph.D., California (Davis).
Professor, AFE

Ragnar Soegaard

M.E.B.A., Gothenburg
Associate Professor, SOM

Toshiyuki Sugiyama

B.Eng., M.Eng., Dr.Eng., Univ. of Tokyo.
Associate Professor, SEC

Tri B. Suselo

Drs., Bandung Inst. of Tech.;
Ph.D., U.S.T.L., Montpellier
Assistant Professor, INRDM

F. Swierczek

M.A., Ph.D., Pittsburg.
Associate Professor, SOM

M.T. Tabucanon

B.S.E.E., B.S.M.E., Cebu Inst. of Tech.;
M.Eng., D.Eng., AIT.
Professor, IEM

Kenzo Takahashi

B.S., Kanazawa; Ph.D., Tokyo Inst. of Tech.
Research Professor, TC

Yordphol Tanaboriboon

B.S., M.S., Oklahoma State; Ph.D.,
Virginia Polytechnic Institute and State.
Associate Professor, GTE

Hitoshi Tanaka

B.Eng., M.Eng., D.Eng., Tohoku.
Associate Professor, WRE

Shuzo Tanaka

B.Eng., Kagoshima; M.S., Michigan;
D.Eng., Tokyo.
Associate Professor, EE

John C.S. Tang

B.S., M.S., Ph.D., Florida.
Associate Professor, IEM

Wolfgang Tentscher

Dipl. Ing., Technical Univ. of Berlin.
Associate Professor, ET

Prida Thimakorn

B.Eng., Chulalongkorn;
M. Eng., Chulalongkorn-SEATO
Graduate School.
Associate Professor, WRE

Myint Myint Thein

B.A., Yangon; M.A., Warwick, U.K.
Instructor, LC

Tawatchai Tingsanchali

B.Eng. (Hons.), Chulalongkorn;
M.Eng., D.Eng., AIT.
Professor, WRE

Francis T. Tran

B.Sc., Laval; M.Sc., Ph.D.,
Ecole Polytechnique, Montreal.
Associate Professor, EE

Selawa H. Upasena

B.Sc. (Hons.), M.Sc., Moscow;
Ph.D., Novisad.
Associate Professor, AFE

Johan Verink

B.Sc., Wageningen; Dr.Eng., Hannover.
Assistant Professor, EE

H. Arthur Vespry

B.Arch., Ottawa; B.Lib. Sc., McGill;
M.Lib.Sc., Western Ontario.
Director, LRDC

C. Visvanathan

B.Tech., IIT Madras; M.Eng., AIT;
Ph.D., National Polytech., Toulouse.
Assistant Professor, EE

Suphat Vongvisessomjai

B.Eng., Chulalongkorn;
M.Eng., D.Eng., AIT.
Professor, WRE

Karl E. Weber

M.A., Dr. phil., Heidelberg.
Professor, HSD

Sutat Weesakul

B.Eng., Chulalongkorn;
M.Eng., D. Eng., AIT.
Assistant Professor, WRE

Rick L. Whisenand

B.A., M.A., Oklahoma State.
Assistant Professor, LC

B.W.E. Wickramanayake

B.A., Ceylon; M.A., Dhaka; Dip. (Econ.),
East Anglia; Dr. Econ., EUR, Rotterdam.
Assistant Professor, HSD

Vilas Wuwongse

B.Eng., M.Eng., D.Eng.,
Tokyo Inst. of Tech.
Associate Professor, CS

A. Yakupitiyage

B.Sc., Sri Lanka; M.Sc., AIT;
Ph.D., Stirling.
Assistant Professor, AFE

Hiroki Yamaguchi

B.S., Saikama; M.Eng., D.Eng., Tokyo.
Associate Professor, SEC

Yap Kioc-Sheng

B.A., M.A., Ph.D., Free Univ., Amsterdam.
Associate Professor, HSD

Zhai Yongping

Ph.D., Social Science, Grenoble.
Assistant Professor, ET

ASSOCIATED FACULTY

AFE

Supraanee Chinabut
B.S., Kasetsart; M.S., Auburn;
Ph.D., Stirling.

Hilary A. Collins

B.Sc., Bristol; M.Sc., Reading;
Ph.D., Lincoln.

Sumitra Poovarodom

B.Sc., Khon Kaen; M.Sc., AIT;
Ph.D., Rutgers.

Sornthep Tumwasorn

B.S., M.S., Kasetsart; Ph.D., Florida.

Hermann Waibel

M.Sc., Ph.D., Hohenheim.

Nipon Wongvisetsirikul

B.Sc., Ramkhamhaeng; M.Sc., Mahidol;
Ph.D., Hebrew Univ., Israel.

Suntaree Yingjajaval

B.Sc., Kasetsart; M.Sc.,
Ph.D., Oregon State Univ.

CS

Suphamit Chittayasothorn

B.Eng., KMIT; M.Eng., AIT;
Ph.D., Queensland.

Kanchit Malaivongs

B.Eng., Chulalongkorn;
M.Eng., D.Eng., AIT.

Suchal Thanawastien

B.Eng., Chulalongkorn; M.S.E.E.,
Southern California; Ph.D., Auburn.

Peansiri Vongvipanond

B.A., Chulalongkorn;
M.A., Washington; Ph.D., Hawaii.

EE

Sompol Boonthanon

B.Sc., Kasetsart; M.Sc., D.Tech.Sc., AIT.

Hideki Harada

B.Eng., M.Eng., D. Eng., Tohoku.

Takashi Mino

B.Eng., M. Eng., D.Eng., Tokyo.

ET

Prida Wibulswas

DIC, Imperial College; Ph.D., London.

GTE

Prapansak Buranaprapa

B.Eng., Chulalongkorn; M.Eng., AIT;
Ph.D., Oklahoma.

Direk Lavansiri

B.Eng., Chulalongkorn; M.S.C.E.,
Washington; Ph.D., Oregon State.

Wanchai Teparaksa

B.Eng., Kasetsart; M.Eng., AIT;
D.Eng., Kyoto.

HSD

Bengt L. Ageros

Dip. C.S.W., Stockholm; M.S.W., Miami;
M.Sc.P.H., North Carolina;
Ph.D., Pennsylvania.

Hemayet Hossain

B.Sc., M.Sc., Dhaka;
D.E.D., Texas A & M Univ.

IEM

Thanet Makjamroen

B.A., Thammasat; M.Sc., AIT;
M.Sc., Ph.D., Berkeley

Somchet Thinaphong

B.E., Tasmania; M.Eng., D.Eng., AIT.

SEC

Taweep Chaisomphob

B.Eng., Chulalongkorn;
M.Eng., D. Eng., Univ. of Tokyo.

Vithool Jearkjirm

B.Eng., Chulalongkorn;
M.S., Ph.D., Purdue.

Ping Kunawatsatit

B.Eng., Chulalongkorn; M.Eng., Kyoto;
Ph.D., Purdue.

Prapon Phasukyud

B.Eng., Chulalongkorn; M.S., Texas;
M.S., Missouri-Rolla;
Ph.D., Missouri-Columbia.

Kamol Vajarasathira

B.Eng., Norwich; M.S.C.E., Purdue;
Ph.D., Utah.

Shoutian Zhang

B.Eng., Tsinghua;
M.Eng., Royal Inst. of Tech.,
Sweden.

SOM

Kanchit Malaivongs

B.Eng., Chulalongkorn;
M.Eng., D.Eng., AIT

WRE

Noppadol In-na

B.Eng., Khon Kaen; M.Eng., AIT;
M.Sc., Ireland; Ph.D., McGill, Canada.

INRDM

Rene Codoni

Ph.D., Basle.

Surachet Chettamart

B.Sc., Kasetsart; M.S.,
Ph.D., Washington.

Mohammed Z. Hussain

B.Sc., Peshawar; M.Sc., M.Phil.,
Ph.D., Yale.

Thanwa Jitsanguan

B.S., Kasetsart; M.A. (Econ), Thammasat;
Cert. in Fisheries Econ., Pertanian Univ.
Malaysia; Ph.D., Univ. of Hawaii.

Gary E. Johnson

A.A., Bismarck; Ph.B., M.S., North
Dakota; Ph.D., Indiana State.

Schwann Tunhikorn

B.Sc., M.Sc., Chulalongkorn;
Ph.D., Georgia.

Douglas R. Webster

B.A. (Hons.), Univ. of Toronto; M.A.,
Waterloo; Ph.D., California (Berkeley).

IREM

Siripong Hungspreug

B.E., Western Australia; M.Sc., Polytech.
Inst. of New York; Ph.D., Cornell.

Noppadol In-na

B.Eng., Khon Kaen; M.Eng., AIT;
M.Sc., Ireland; Ph.D., McGill, Canada.

Guna Nidhi Paudyal

B.E., Rajasthan; M.Eng., D.Eng., AIT.

AFFILIATED FACULTY

AFE

C.F. Knud-Hansen
B.Sc., Gettysburg; M.S.P.H.,
North Carolina; Ph.D., California (Davis).

CS

Charoon Chirapaisarnkul
B.Sc., B.Eng., Ph.D., New South Wales.

Regino L. Gonzales, Jr.

B.S.C.E., Cebu Inst. of Tech.; M.Eng., AIT.

Y. Iikura

B.Eng., M.Eng., D.Eng., Tokyo.

EE

Kiran K. Bhattarai
B.Sc., Punjab; M.S., Hawaii; D.Eng., AIT.

ET

Khin Bo
B.Tech., Ph.D., Loughborough, UK.

Supachart Chungpaibulpattana

B.Sc., Songkla; M.Eng., D.Eng., AIT.

Dang Van Giap

Post-graduate (Econ.), INSTN, Saclay;
Ph.D., Pantheon, Sorbonne.

HSD

Regino L. Gonzales, Jr.
B.S., Cebu; M.Eng., AIT.

Roger Hawkey

B.A., Cambridge; M.A., Reading;
P.G.C.E., Ph.D., London.

Govind Kelkar

B.A., M.A., LLB, Lucknow, India;
M.A., Michigan; Ph.D., Delhi.

Md. A. Quader Miah

B.Sc.Eng., Bangladesh;
M.Eng., D.Eng., AIT.

Somrudee Nicrowattanayingyong

B.Arch., Silpakorn;
M.R.P., Ph.D., Syracuse.

Foo Tuan Seik

B.Sc. (Hons.), Univ. Saine Malaysia,
Penang; M.Sc., D.Tech. Sc., AIT.

Gopal B. Thapa

B.A., M.A., Tribhuvan;
M.Sc., D.Tech. Sc., AIT.

Suvit Yodmani

B.A., M.A., Ph.D., Boston.

IEM

Charoon Chirapaisarnkul
B.Sc., B.Eng., Ph.D., New South Wales.

Do Ba Khang

M.Sc., Eotvos Lorand, Hungary;
M.Sc., D.Tech.Sc., AIT.

SEC

S.P. Gupta
B.Sc., Birla Inst. of Tech;
M.C.E., Ph.D., Brigham Young.

SO M

K. Harigopal
M.A., M.Ed., Osmania; D., IIT;
Ph.D., Andhra.

Barbara Igel

M.A. (Econ.), Technical Univ., Berlin;
Ph.D. (Econ.), Freie Univ., Berlin.

TC

Tapio Erke
M.Sc., Helsinki Univ. of Tech.

Raimo Kolkki

M.Tech., Helsinki Inst. of Tech.

INRDM

David J. King
B.A., Nottingham Univ.;
M.A., Ph.D., Univ. of Wisconsin.

IREM

Pushpa Raj Onta
B.Tech., IIT (Madras); M.Eng., D.Eng., AIT.

Tran Thuc

B.Eng. (Hons.), Hanoi Hydraulic Inst;
M.Eng., D.Eng., AIT.

VISITING FACULTY

AFE

Wang Maohua
B.Sc., Beijing; Ph.D., Moscow.

T. Panda

B.Tech., M.Tech., Jadvapur;
Ph.D., IIT (New Delhi).

Suthad Setboonsarng

B.A., Thammasat; M.S., Ph.D., Hawaii.

CS

Surapong Auwatanamongkol
B.S., Chulalongkorn; M.S., Georgia Inst.
of Tech.; Ph.D., Southern Methodist.

Gerard Huet

M.S., Paris; M.S., Ph.D., Case Western
Reserve Univ.; Doctorat d'Etat, Paris VII.

Geir F.H. Skylstad

M.Tech., Norwegian Inst. of Tech.

Andrew L. Wendelborn

B.Sc., Ph.D., Adelaide.

Qi Yulu

B.Sc., M.Sc., Ph.D.,
Univ. of Science and Technology.

EE

Lee Seong-Key
B.Sc., M.S., Ph.D., Seoul National Univ.

Zhuang Ya-hui

B.S., Qinghua; Ph.D., Moscow.

ET

Ronald D. Johnson
B.A., M.Sc., Ph.D., British Columbia.

Eddy A. Mesritz

M.Sc., Delft.

Nonita T. Yap

B.Sc., San Carlos;
M.E.S., Dalhousie; Ph.D., Alberta.

GTE

Yuzo Akatsuka
B.Eng., Tokyo; M.Eng., California;
D.Eng., Tokyo.

Ronald G. Gordon

B.Eng., M.Eng.Sc., Queensland;
D.Sc., Pretoria.

Soren Holmberg

B.Eng., M.Sc., Technical Univ. of
Denmark.

Yudhbir

B.Sc., Chandigarh;
M.Tech., IIT, Bombay; Ph.D., Cornell Univ.

HSD

D.K. Banwet
B.E., Burdwan; M.E., Calcutta;
Ph.D., IIT (New Delhi).

A.B. Etherington

B.Arch., Cornell; M.A., Hawaii;
M.E.P., Phil.; M.Arch., McGill;
Ph.D., Hawaii.

V. Setty Pendakur

B.E., Mysore; M.Sc., British Columbia;
M.S.C.E., Ph.D., Washington.

Ira M. Robinson

B.A., Wesleyan; M.A., Ph.D., Chicago.

J.Ruland

B.Sc., M.Sc., Ph.D., Freiburg.

Samuel O. Russell

B.Sc., M.Sc., Ph.D., Belfast.

George G. Van Der Meulen

M.Sc., Amsterdam; Ph.D., Tilburg.

IEM**Dentcho N. Batanov**

B.S., M.Sc., Ph.D., Technical Univ., Sofia.

D.A.K. Deschoolmeester

B.Eng., M.B.A., Ph.D., Ghent, Belgium.

Jan Goossenaerts

B.Phil., Ph.D., Catholic Univ. of Leuven.

Gerrit K. Janssens

B.S., M.S., Antwerp; M.S., Ghent;
Ph.D., Brussels.

B. Katalinic

Dipl.-Ing., M.S., Ph.D., Univ. of Zagreb,
Austria.

Francis E. Kennedy

B.S., Worcester Polytech. Inst.;
M.S., Stanford; Ph.D., Rensselaer
Polytech. Inst., New York.

Hugo Pastijn

B.Eng., M.Eng., Royal Military
Academy, Brussels;
M.Eng., Catholic Univ. of Leuven.

Peter Rousseuw

Ph.D., Brussels.

SEC**K. Ozawa**

B.Eng., M.Eng., D.Eng., Tokyo.

Steve M. Rowlinson

B.Sc., Nottingham; M.Sc., Imperial
College, London; Ph.D., Brunel Univ.

Pennung Warnitchai

B.S., Chulalongkorn;
M.Eng., D. Eng., Univ. of Tokyo.

SOM**Erkko Autio**

M.Sc., Helsinki Univ. of Tech., Finland.

Zong Tae Bae

M.S., Ph.D., KAIST.

Atipol Bhanichsupapol

B.A., Carleton; M.A., Northeastern;
Ph.D., Carleton.

Patrick Gougeon

Docteur d'Etat., Caen, France.

Jyothi P. Gupta

B.Tech., IIT, Kharagpur; Ph.D., Man-
chester.

Jae-Ho Hyun

B.S., Hanyang Univ.; M.S., Ph.D., KAIST.

Young-Suk Hyun

B.S., MBA, Seoul National Univ.;
Ph.D., KAIST.

Manesh G. Korgaonker

B.E., Bombay;
M.Tech., Ph.D., IIT (Bombay).

Agathe Merceron

B.Sc., Nantes; M.Sc., Paris 7;
Docteur d'Etat, Paris 11.

Bruno Ponson

B.Econ., M.Econ., Ph.D., Paris.

David Wheeler

B.A., M.B.A., Ph.D., Texas Tech.

TC**Leslie T.M. Berry**

B.Sc., Ph.D., Dip. Sec. Ed., Adelaide

Lauri Karikoski

M.Sc., Telecom Finland.

WRE**Sheng Liang**

B.S., National Chung Hsing Univ.;
M.S., Univ. of Hawaii;
Ph.D., Univ. of Florida.

Ashwani K. Randev

B.Sc., Himachal Pradesh Univ.;
M.Sc., Ph.D., Himachal Pradesh K.V.U.

Kuniyoshi Takeuchi

B.E., M.E., Tokyo;
Ph.D., North Carolina.

INRDM**Ian K. Crain**

B.Sc., M.Sc., McGill;
Ph.D., Western Ontario.

Peter J. Dooling

B.A., B.P.E., (Hons.), M.A., Univ. of
Alberta; Ph.D., Colorado State Univ.

William Shalinsky

B.A., B.S.W., McGill;
M.Sc., D.S.W., Western Reserve.

IREM**Gideon Oron**

D.Sc., Israel Inst. of Tech.

1992 PORTFOLIO OF SPONSORED AND CONTRACT GRANT RESEARCH

(Research titles are followed in italics by names of investigators and sponsors and amount of grant)

In Progress

○ AGRICULTURAL AND FOOD ENGINEERING

Dehydration of Tropical Fruits and Vegetables Using a Refrigeration System; *Dr. Athapol*
AIT Research Initiation Grant
(Baht 45,000)

Cashewnut Processing at Farm Level
Dr. Athapol; CIDA/AIT-CUC PP
(Baht 110,000)

AIT Aquaculture Outreach: Interactive Field Trials with Farmers in North-east Thailand (Phase II)
Prof. Edwards; ODA (€942,450)

Biological and Economic Characterization of Fertilization and Supplementary Feeding Regimes for Small-Scale Pond Aquaculture
Prof. Edwards, Dr. Yakupittiyage
ODA (€60,000)

Beef and Dairy Cattle Production Systems in Southern E-sarn
Dr. Gartner; CIDA/AIT-CUC PP
(Baht 100,000)

Water Hyacinth Harvester
Prof. Gee-Clough
AIT Physical Plant (Baht 600,000)

Engine Driven Potato Digger with Oscillating Blade for Small Farm Use
Dr. Wolf, IIT Haifa; USAID (US\$200,000)

Farmer-Driven Electrostatic Low Volume Sprayer
Prof. Gupta, Prof. Singh, Dr. Manor, IIT Haifa; USAID (US\$ 200,000)

Tropical Spice Oleoresin Extraction Demonstration Unit for Women's Groups; *Dr. Ilangantileke*
CIDA/AIT-CUC PP (Baht 100,000)

Design and Development of a Natural Color Extractor to Extract Colors from Tropical Fruits; *Dr. Ilangantileke*
AIT Research Initiation Grant
(Baht 49,700)

Development of an Oleoresin Extractor to Extract Products from Tropical Fruits and Spices
Dr. Ilangantileke
Rangsit Group Ltd. (Baht 61,000)

Irradiation as a Combination Post Harvest Treatment to Increase Shelf-life of Tropical Fruits of Economic Importance; *Dr. Ilangantileke*
IAEA Austria (Baht 121,953)

Computational Skill Development in Food Processing Engineering
Prof. Jindal
CIDA/AIT-CUC PP (Baht 95,000)

Survey and Analysis of Rough Rice Properties Data; *Prof. Jindal*
CIDA/AIT-CUC PP (Baht 75,000)

Pond Dynamics/Aquaculture Collaborative Research Supportive Program; *Dr. Kuwei Lin,*
Dr. Knud-Hansen; USAID (US\$ 108,000)

Introduction and Development of Channel Catfish Culture in the Tropics; *Dr. Kuwei Lin*
Charoen Pokphand Inc., Thailand
(Baht 2,836,513)

Strategies for Fish Seed Production
Dr. Little; ODA, UK (€65,000)

Use of Leguminous Leaves as Fish Pond Inputs; *Dr. Little,*
Dr. Yakupittiyage, Prof. Edwards
USAID (Baht 3,624,475)

Evaluation and Selection of Agricultural Engineering Inputs for Rural Development in Asian Developing Countries; *Prof. Maohua*
AIT Research Initiation Grant
(Baht 60,000)

Development of a Procedure for Identifying Environmental Hazards in Large Irrigation Systems; *Dr. Murty*
AIT Research Initiation Grant
(Baht 42,000)

Finishing the Development of Agricultural Experimentation Station
Prof. Nielsen; DANIDA (Baht 282,700),
Prof. Nielsen (Baht 80,000)

Fertilization System on Computer
Prof. Nielsen; DANIDA (US\$ 2,800)

Environmental Impact of Small-scale Aquaculture
Dr. Phillips; ODA (US\$ 10,000)

Environmental Assessment and Management of Aquaculture Development in Asia-Pacific Region
Dr. Phillips; FAO (US\$ 14,000)

Environmental Impact of Shrimp Farming on Two Coastal Districts in Southern Thailand; *Dr. Phillips*
National Environment Board and Network of Aquaculture Centers in Asia Pacific (NACA - support in kind)

Integration of Aquaculture into Asian Natural Resource Systems
Dr. Phillips; ODA (US\$ 127,500)

Improving the Performance of Hand Tools and Equipment Used by Women in Agriculture (Exploratory Phase II)
Dr. Salokhe;
CIDA/AIT-CUC PP (Baht 75,000)

Conventional Farming System and its Development in Southeast Asia
Dr. Salokhe; Ministry of Education, Japan
(Baht 100,000)

Development of a Front-Mounted Hydraulic Mower; *Dr. Salokhe*
Sanyo-Kiki Co. Ltd., Japan
(Baht 140,000)

Preparation of Two-Course Books
Dr. Suthad, Dr. Waibel
GTZ (Baht 125,000)

Evaluation of Mechanical Harvester for Sugarcane in Thailand
Prof. Singh, Mr. Pathak
Wang Kanai Sugar Group, Bangkok
(Baht 300,000)

Improvement of Vegetable Production Systems under Biological Methods of Pest Control; *Dr. Upasena,*
Dr. Waibel; GTZ (Baht 1,860,000)

Development of Feeding Systems for Fish and Integrated Duck-Fish System; *Dr. Yakupittiyage, Dr. Little*
IDRC (CAD\$ 150,000)

○ COMPUTER SCIENCE

Development of a Marking Algorithm for Apparel CAD Using Generic Algorithms; *Dr. Vilas*
MOSTE (US\$ 36,000)

○ ENERGY TECHNOLOGY

Fluidized Bed Black Liquor Combustion
Dr. Bhattacharya; ADEME (Baht 80,000)

Strategies of Rational Energy Use in Developing Countries
Dr. Dang; EC (US\$ 52,000)

Utilization of Biomass for Power Production; *Dr. Bhattacharya,*
Mr. Schroder
Danish Embassy, Bangkok (US\$ 6,000)

Policy Analysis and Institutional Systems Strengthening in the Context of Technology Dissemination to Improve Energy Efficiency in ASEAN Countries; Dr. Dang EC and ASEAN (US\$ 445,000)

Energy and Environment Management Strategies: Options Analysis; Dr. Dang French Govt., UNEP (FF 850,000)

Solar Refrigerator Demonstration Prof. Exell; CIDA (Baht 104,000)

Solar Radiation Calibration Center Prof. Exell; CIDA (Baht 72,800)

Asian Energy News Prof. Lefevre, Dr. Zhai, Dr. Hua AFME/ADEME (FF 150,000)

Energy Demand Forecast Model Prof. Lefevre, Dr. Zhai, Mr. Sushil MOFA, AFME/ADEME, AIT (FF 480,000)

Energy Demand 1991-1992 Prof. Lefevre, Dr. Zhai, Dr. Arsegianto, Dr. Hua, Mr. Sushil MOFA, AFME, (FF 350,000)

REDP-Project P1 (Sectoral Energy Demand Analysis); Prof. Lefevre, Dr. Zhai; MOFA, UNDP/ESCAP, ADEME (US\$170,000)

Designing Demand-Side Management Programs in a Developing Country: Problems and Prospects; Prof. Lefevre, Dr. Shrestha; MOFA (FF 11,000)

Energy-Cum-Electricity Demand and Supply Analysis; Prof. Lefevre, Dr. Zhai, Dr. Shrestha, Dr. Chateau, Dr. Lapillone, Dr. Fliron; ADB/Govt. of France (Trust Fund) (US\$ 600,000)

Energy Environment Study in ASEAN Prof. Lefevre, Mr. Ming, Mr. Sushil, Ms. Tamtip CEC thru AEEMTRC (US\$ 5,000)

Policy Analysis of Energy Pricing in Selected Asian Countries Prof. Lefevre, Dr. Shrestha MOFA (FF 10,000)

Energy Planning on-the-job Training for the People's Republic of China Prof. Lefevre, Dr. Zhai, Dr. Shrestha, Dr. Lapillone; ADB/Govt. of France (Trust Fund) (US\$ 95,000)

Total Energy Management in Commercial Buildings; Dr. Mohanty, Mr. Panda; ADEME (US\$ 10,000)

Application of Heat Pumps in Drying Processes; Dr. Mohanty, Mr. Thavalingam; ADEME (US\$ 3,000)

Development of User-friendly Software for Rational Use of Energy Dr. Mohanty, Mr. Paloso ADEME (US\$ 8,000)

Boilers in Industry; Dr. Gougeon, Prof. Mora; Babcock Co. (US\$ 30,000)

Thesis Support Prof. Mora; SAAM/LED (US\$ 8,000)

Advanced Soda Pulping Prof. Mora; Midvaleur (US\$ 130,000)

Rational Use of Energy; Prof. Mora, Dr. Mohanty; ADEME (US\$ 16,000)

Energy in Industry Prof. Mora; MOFA (US\$ 40,000)

Energy Park Maintenance Dr. Supachart French Govt. (Baht 420,000)

Industry and Environment Dr. Visvanathan, Prof. Mora ADEME (US\$ 40,000)

Evaluation of SOLCO Solar Water Heater; Dr. Supachart SOLCOTHAI Co. Ltd. (Baht 25,000)

Performance of a Hybrid System Pilot Plant for Anaerobic Digestion of Pig Manure Dr. Tentscher; KU, GTZ (DM 40,000)

Evaluation of Canadian Biogas Plants, (3 Phases) Dr. Tentscher; CIDA/AIT-CUC PP (Baht 150,000)

○ ENVIRONMENTAL ENGINEERING

Photocatalytic and Anaerobic Degradation of Halogenated Hydrocarbons Dr. Tanaka; JICA (Baht 200,000)

Upgrading of Advanced Anaerobic Bioreactors for Treatment of Low to High Strength Wastewaters Dr. Harada, Dr. Fujii ARRA, Japan (JY 5,000,000)

Thermophilic Treatment of High Strength Wastewaters by Modified Upflow Anaerobic Sludge Blanket Reactor; Dr. Harada, Dr. Fujii KOMATSU, Japan (Baht 349,440)

Water Pollution Analysis of Klongs in Bangkok; Dr. Fujii; JICA (Baht 250,000)

Membrane Technology and Ozone Research Project; Mrs. Samorn, Prof. Mora; CIDA (Baht 120,000)

Sewage Purification Through Aquatic Plants; Dr. Verink; GTZ (DM 233,750)

Application of Floto-filter Unit for Contact-Flocculation Filtration of Surface Waters and Biological Filtration of Wastewaters Dr. Visvanathan; RTG (Baht 60,000)

Biological Detoxification of Hazardous Wastes; Prof. Chongrak AEON Group Environment Foundation, Japan (JY 44,000,000)

Detoxification of Toxic Organic Wastes (Petrochemical Sludge) by Land Treatment Process Prof. Chongrak; ADEME (Baht 200,000)

Assessment of Insecticide in Vegetable Production Systems: Maximum Residue Levels; Dr. Verink, Dr. Waibel; GTZ (Baht 372,000)

Biomass for Power Production; Mr. Schroder, Dr. Bhattacharya DANIDA (Baht 150,000)

Chromium Recovery from Tannery Wastewater; Dr. Visvanathan CDG (Baht 349,000)

Hazardous Waste Management Dr. Visvanathan, Prof. Mora ADEME (Baht 860,000)

Application of Pervaporation Membrane Technology in the Electronics Industry; Dr. Visvanathan Industrial Estate Authority of Thailand (Baht 50,000)

Appropriate Wastewater Treatment Systems for a Small Village on the Chao Phraya River Bank Mrs. Samorn, Dr. Visvanathan UNEP/CIDA (Baht 200,000)

○ GEOTECHNICAL AND TRANSPORTATION ENGINEERING

Environmental Geotechnical Engineering Problems in Southeast Asia (Phase II) Dr. Honyo; JICA (Baht 220,000)

Improvement of Poor Quality Backfill on Soft Bangkok Clay with Tenax Geoid Reinforcement Dr. Bergado; Tenax SpA, Como, Italy (US\$ 30,000)

Reinforced Embankment with Poor Quality Backfill Soil Using Polyfelt Geotextiles on Soft Bangkok Clay Dr. Bergado Polyfelt, Austria (Baht 5,254,075)

Feasibility Study on the Utilization of Double-deck and/or Articulated Buses in Bangkok; Dr. Yordphol, Dr. Shimazaki; BMTA (Baht 400,000)

Future Bus Requirements for BMTA
*Dr. Yordphol, Dr. Shimazaki,
Dr. Mori; BMTA (Baht 150,000)*

**Stress-related Stability Analysis of
Powerhouse Cavern and Tailrace
Tunnel of Lam Ta Khlong Pumped
Storage Project;** *Dr. Noppadol
ATT Consultants Co. Ltd., EGAT
(Baht 126,000)*

**Investigation on Landslides and
Protective Measures for Southern
Thailand;** *Dr. Noppadol
CIDA/AIT-CUC PP (Baht 100,000)*

**Artificial Recharge as a Bangkok
Land Subsidence Control;** *Prof. Prinya,
Dr. Noppadol; IDRC (Baht 3,979,800)*

Transportation Management in Asia
Dr. Hokao; JICA (Baht 325,205)

**Present and Future of Transportation
Network in Developing Economies
(Phase II);** *Dr. Shimazaki; Mitsubishi
Research Institute, Inc. (Baht 360,000)*

**Development of Transportation
Planning Methods for Developing
Countries Based on an Analysis of
Transportation Systems in Asian
Countries**
Dr. Shimazaki; JICA (Baht 100,000)

**Suitable Soil Stabilization Technique
for Concrete Block Pavement for
Bangkok Subsoils;** *Dr. Noppadol
Concrete Products and Aggregates Co.
Ltd. (Baht 100,000)*

**Sand Compaction Piles on Soft
Bangkok Clay Using Locally-Available
and Low-Quality Soils;** *Dr. Bergado,
Dr. Honjo, Prof. Balasubramaniam
FUDO Construction Co., Tokyo
(Baht 912,000)*

○ HUMAN SETTLEMENTS DEVELOPMENT

**Environmental Impact Assessment
Study on Informal Sector Economic
Activities in Bangkok;** *Dr. Amin
CIDA/AIT-CUC PP (Baht 175,000)*

Informal Sector Seminar/Conference
*Dr. Amin
CIDA/AIT-CUC PP (Baht 100,000)*

**Development of an Accommodation
Model for Urban Informal Economic
Activities in Bangkok;** *Dr. Amin
CIDA/AIT-CUC PP (Baht 150,000)*

**Land Management for South Asian
Cities;** *Mr. Archer
CIDA/AIT-CUC PP (Baht 75,000)*

**Urban Land Pooling/Readjustment in
Asia-Pacific Countries;** *Mr. Archer
Metropolitan Research Trust
(Baht 50,000)*

**Agricultural and Rural Development
in Northeast Thailand**
*Dr. Demaine, Mr. Phalboon
CIDA/AIT-CUC PP (Baht 150,000)*

**Development of Ban Puay, Puay Noi
Minor District, Khon Kaen Province**
*Dr. Demaine; Magsaysay Foundation
(Baht 253,000)*

**AIT Aquaculture Outreach (Field
Trials and Promotion of Small-scale
Aquaculture in Northeast Thailand)**
*Prof. Edwards, Dr. Demaine, Dr. Little,
Mr. Innes-Taylor, Mr. Guttmann
ODA (Phase I: 1988-92: £ 654,000)
ODA (Phase II: 1992-96: £ 600,000 -
beginning Dec. 92)*

Small-Scale Aquaculture in Lao PDR
*Dr. Demaine, Prof. Edwards, Dr. Little,
Mr. Innes-Taylor, Mr. Guttmann;
ODA (£ 200,000)*

**Fishery Sector Review of Lower
Mekong Basin;** *Dr. Demaine,
Prof. Edwards, Dr. Phillips, Mr. Suchint
(Kasetsart), Dr. Degnbol, Dr. Sverdrup-
Jensen; DANIDA (US\$ 302,000)*

**Development of Ban Khok Kong,
Na Chuak District, Mahasarakham
Province;** *Dr. Demaine, Mr. Prida,
Mr. Chantarawarathit; Green E-sarn
Project; (Baht 1.25 Million)*

**Reconnaissance Studies for Rural
Development in Aquaculture
in Indochina;** *Prof. Edwards,
Dr. Demaine, Dr. Little, Dr. Phillips,
Mr. Innes-Taylor, Mr. Guttmann
SIDA (£ 200,000)*

**Chinese Students on Social
and Gender Equality**
*Dr. Kelkar, Ms. Nathan
CIDA/AIT-CUC PP (Baht 70,000)*

Women and Land Systems in Asia
*Dr. Kelkar, Ms. Yunxian
NORAD (Baht 75,000)*

Women and Natural Resources
*Dr. Kelkar, Ms. Mtshra
NORAD; (Baht 75,000)*

**Handbook on Planning and Building
Legislation: ASEAN Countries**
Mr. Kammeier; IDRC (US\$ 90,000)

**Demonstration Project: Rural-
Regional Planning in Thailand**
*Mr. Kammeier, Dr. Somrudee
CIDA/AIT-CUC PP (Baht 500,000)*

**High Strength Interlocking
Concrete Blocks;** *Mr. Lefebvre,
Mr. Keouimol (KMIT)
CIDA/AIT-CUC PP (Baht 150,000)*

**Housing through Small-Scale
Building Component Industries**
*Mr. Lefebvre, Mr. Reddy
CIDA/AIT-CUC PP (Baht 267,828)*

Pre-stressed Joists; *Mr. Lefebvre
CIDA/AIT-CUC PP (Baht 75,000)*

Floating Foundation; *Mr. Lefebvre
CIDA/AIT-CUC PP (Baht 250,000)*

Field Testing Kit
*Mr. Lefebvre, Mr. Reddy
CIDA/AIT-CUC PP (Baht 75,000)*

**Latrine Improvement for Slum Areas
in Bangkok;** *Mr. Lefebvre
CIDA/AIT-CUC PP (Baht 75,000)*

**AIT Alumni 1961-92 Employer Study
(Round II);** *Prof. Weber, Dr. Miah
GTZ (US\$ 10,000)*

**Applicability of Urban Transportation
Planning Methodology to Developing
Countries**
Dr. Nakamura; JICA (Baht 192,000)

**Regional Analysis of An Emerging
Metropolis: Cuttack Bhubaneswar
City Region in Eastern India -
Case Study;** *Dr. Routray
AIT Research Initiation Grant
(Baht 44,000)*

**People's Image of Development (the
Way a Rural Community Wants to
Develop Itself): A Cross-Cultural
Exploratory Project;** *Dr. Setty
CIDA/AIT-CUC PP (Baht 75,000)*

**Developing Agro-Enterprises in Rice-
based Farming Systems Among Rural
Women in Asia: A Cross-Cultural
Exploratory Project;** *Dr. Setty
CIDA/AIT-CUC PP (Baht 75,000)*

**Economics of Using Non-metallic
Mineral Products for Housing
Construction in Thailand**
*Dr. Wickramanayake
CIDA/AIT-CUC PP (Baht 63,000)*

**Growth and Performance of Township
Enterprises in China**
*Dr. Wickramanayake
CIDA/AIT-CUC PP (Baht 77,000)*

**Provision of Urban Public Services
in Abidjan, Ivory Coast**
*Prof. Parenteau
Human Sciences Research Council,
Canada (CAD\$ 67,000)*

Privatization in Old French Colonial Countries (Hanoi, Vietnam)

Prof. Parenteau; CIDA/AIT-CUC PP, University of Montreal (CAD\$ 32,000)

Strategy for Enabling Women to Strengthen their Role in Development

Prof. Weber, Ms. Rost, Ms. Pongquan
GTZ, CIDA/AIT-CUC PP (US\$ 7,000)

Pre-Disaster Assessment of Physical and Socio-Economic Impacts

Prof. Weber, Dr. Dematne, Col. Ward
CIDA/AIT-CUC PP (US\$ 3,000)

Computer Application Package for Survey Format Design; Prof. Weber, Mr. Tiwart; GTZ (US\$ 12,000)

**GIS Application to Land Use Management and Planning in Watersheds; Prof. Weber, Dr Thapa
GTZ (US\$ 15,000)**

Planning for Field Cropping Cost Efficiency under Irrigation

Prof Weber, Mr. Maskey
GTZ (US\$ 3,000)

Regional Environmental Planning including Anthropogenic and Orogenic Factors; Prof. Weber, Dr. Thapa; GTZ (US\$ 15,000)

Gender Analysis with Focus on the Advancement of Women in the Development Process; Prof. Weber, Mrs. Shrestha; GTZ (US\$ 10,000)

**Area Development Planning in the Vicinity of Nature Conservation Parks; Prof. Weber, Mr. Nepal
CIDA/AIT-CUC PP (US\$ 5,000)**

**Low-Income Rental Housing in Bangkok (in collaboration with NHA)
Dr. Yap; CIDA/AIT-CUC PP, IDRC, NHA
(Baht 2.5 Million)**

○ INDUSTRIAL ENGINEERING AND MANAGEMENT

**Economic and Environmental Roles of Urban Middle Class in Pakistan
Prof. Saeed, Prof. Webster
CIDA (Baht 145,000)**

**Reliability Analysis and Optimization of Water Supply Systems
Prof. Fujiwara; JICA (Baht 150,000)**

**Approaches, Methods and Tools for Creating Knowledge-Based Application Software for Computer-Integrated Manufacturing;
Dr. Batarov
AIT Research Initiation Grant
(Baht 50,000)**

**Industrial Pollution Control and Applications; Dr. Nagarur
CDG (Baht 1,200,000)**

**Analysis of Strategic and Operations Management; Prof. Tabucanon, Prof. Pandey, Dr. Nagarur
SEAGATE Thailand, Teparuk Plant
(Baht 70,000)**

**APEC-HRD Industrial Technology Network (Hurdit) for Thailand/AIT
Dr. Tang
AIT Research Initiation Grant
(Baht 500,000)**

○ INTERDISCIPLINARY NATURAL RESOURCES DEVELOPMENT AND MANAGEMENT PROGRAM

**Assessment of ERS-1 Radar Data for Tropical Agriculture
Dr. Aschbacher; ESA (Baht 500,000)**

**ASEAN Remote Sensing Training Package
Dr. Aschbacher; ESA, EC (Baht 500,000)**

**Bioaccumulation of Contaminants of Lake Songkhla Basin; Dr. Bengtsson
CIDA/AIT-CUC PP (Baht 60,000)**

**Application of GIS for Agricultural Development in Amphoes Phattana, Nikom and Chai Badan, Changwat Lop Buri; Dr. Apisit
National Research Council of Thailand
(Baht 444,300)**

**Agro-ecological Zonation of Khwae Noi Valley, Upper Mae Klong Area, Kanchanaburi Province; Ms. Srtsa-Ang, Mr. Ang; RSL/NRP Development Project (DORAS), Kasetsart University
(Support/assistance in kind)**

**Regional Human and Natural Resources GIS Database, Design and Development; Dr. Lukens
CIDA/AIT-CUC PP (Baht 100,000)**

**Strategy for San Juan Pueblo's Heritage Resources; Dr. Moss
State of New Mexico, Santa Fe, USA
(Baht 750,000)**

**Beyond Tourism: Amenity Migration, A Global Comparative Study; Dr. Moss
International Cultural Resources Institute, Santa Fe, USA (Baht 150,000)**

**Amenity Migration in Asia: Emerging Centers; Dr. Moss
CIDA/AIT-CUC PP (Baht 170,000)**

**Amenity Migration in Eastern Europe: Re-emerging Centers
Dr. Moss; Center for Research and Development, Univ. of New Mexico, International Cultural Resources Institute, USA (Baht 125,000)**

○ IRRIGATION ENGINEERING AND MANAGEMENT

**Operation of Complex Reservoir Systems
Prof. Harboe; GTZ (Baht 2,340,000)**

**Improved Operation and Management of Large-scale Irrigation Systems
Mr. Loof, Dr. Paudyal
GTZ (Baht 3,406,305)**

**Irrigation Performance Evaluation
Mr. Loof, Dr. Onta; CIDA/AIT-CUC PP
(Baht 75,000)**

**GIS-Based Groundwater Model Study
Prof. Gupta, Dr. Onta; CIDA/AIT-CUC PP
(Baht 75,000)**

**Paddy Field Engineering in Asia
Dr. Kono; JICA (US\$ 9,600)**

**Development of a Procedure for Identifying Environmental Hazards in Large Irrigation Systems; Prof. Murty
AIT Research Initiation Grant
(Baht 42,000)**

**Finishing the Development of Agricultural Experimental Station
Prof. Nielsen; DANIDA, Prof. Nielsen
(Baht 80,000)**

**Fertilization System on Computer
Prof. Nielsen; DANIDA (US\$ 2,800)**

○ MANAGEMENT OF TECHNOLOGY

**Managing with New Manufacturing Technologies; Dr. Ramanathan
AIT Research Initiation Grant
(Baht 20,000)**

**Technology Transfer and Development in Developing Member Countries; Prof. Sharif, Dr. Ramanathan
ADB (US\$ 175,000)**

**Comparative Leadership in ASEAN
Dr. Swierczek (Thailand Team Leader)
University of Brunel (US\$ 150,000)**

○ STRUCTURAL ENGINEERING AND CONSTRUCTION

**Material Testing for Don Muang Tollway Project; Dr. Pichai, Mr. Chalot
DYWIDAG Construction JV
(Baht 250,000)**

**Determination of Design Values of Loads in Structural Design Codes
Dr. Sugiyama; JICA (Baht 171,386)**

**Utilization of Lignite Ash to Roller Compacted Concrete
Prof. Aoyagi; JICA (Baht 172,514)**

Admixtures for Improving Concrete Mix Designs

Dr. Pichai, Prof. Pisidhi, Mr. Chalot
Thai Master Builders Co. (Baht 120,000)

Design Cost Prediction Method for Public Construction Contracts

Dr. Ogunlana
AIT Research Initiation Grant
(Baht 45,000)

Women in the Thai Construction Industry

Dr. Ogunlana, Ms. Rost, Ms. Austriaco
CIDA/AIT-CUC PP (Baht 150,000)

Finite Element Analysis of Elevated Highway and Interchanges of Don Muang Tollway Project

Prof. Worsak, Mr. Somporn
Thai Engineering Consultants Co. Ltd.
(Baht 168,500)

○ WATER RESOURCES ENGINEERING

Operation of Complex Reservoir Systems

Prof. Harboe; GTZ (Baht 2,340,000)

Improved Operation and Management of Large Scale Irrigation Systems

Mr. Loof, Dr. Paudyal
GTZ (Baht 3,406,305)

Scale Model Investigation of Water Intake - Sunsari Morang Irrigation II Project

Mr. Prida, Mr. Thuc
Dept. of Irrigation, Ministry of Water Resources - His Majesty's Government of Nepal, Delft Hydraulics, NEDECO
(Baht 2,941,125)

Monitoring of Shoreline and Seabed of Map Ta Phut Port

Prof. Suphat
NSR Consulting Group (Baht 2,322,000)

○ LANGUAGE CENTER

Computer-Assisted Thesis Writing

Mr. Clayton
AIT Research Initiation Grant
(Baht 48,000)

Language Program Development (Part of AIT-Aquaculture Outreach Program)

Mr. Savage; ODA

Pre-session Academic Orientation Program by Means of Distance Learning

Mr. Boyle
AIT Research Initiation Grant
(Baht 17,000)

Completed

○ AGRICULTURAL AND FOOD ENGINEERING

Assessment of a Low-Cost Fertilization/Supplementary Feeding System for Small-Scale Farmers

Prof. Edwards; ODA (£ 60,133)

Human Excreta Reuse in Aquaculture

Prof. Edwards; ODA (£ 39,716)

Feeding Value of Green Fodder for Herbivorous Fish

Prof. Edwards, Dr. Yakupittiyage; ODA (£ 70,037)

AIT Aquaculture Outreach: Interactive Field Trials with Farmers in Northeast Thailand (Phase I)

Prof. Edwards; ODA (£ 654,921)

Improving the Performance of Agricultural Vehicles and Implements in Wet Paddy Fields

Prof. Gee-Clough; Dr. Salokhe
EC (US\$ 128,000)

PC-Based Decision Support System for In-Store Drying and Aeration of Rough Rice

Prof. Jindal
CIDA/AIT-CUC PP (Baht 95,000)

Development of Fry Production and Nursing Strategies for the Nile Tilapia (*Oreochromis niloticus*)

Dr. Little; ODA (£ 50,676)

Muscovy Ducks

Dr. Little, Prof. Edwards; IDRC (CAD\$ 111,700)

Demonstration and Popularization of Use of Enamel Coated Bolt-on Plates for Cage Wheels - Phase II

Dr. Salokhe, Prof. Gee-Clough
CIDA/AIT-CUC PP (Baht 75,000)

Improving the Performance of Hand Tools and Equipment Used by Women in Agriculture (Exploratory - Phase I)

Dr. Salokhe
CIDA/AIT-CUC PP (Baht 75,000)

Improving the Performance of Hand Tools and Equipment Used by Women in Agriculture (Demonstration - Phase I)

Dr. Salokhe
CIDA/AIT-CUC PP (Baht 75,000)

Promotion of Jab Seeder (Thailand)

Prof. Singh, Mr. Chaiyaphol
IDRC (CAD\$ 18,094)

Testing of Rice Planters

Prof. Singh
Siamati Limited, Thailand (Baht 100,000)

Environmental and Social Costs of Pesticide Use in Asian Vegetable Production Systems

Dr. Walbel, Dr. Upasena; GTZ (Baht 1,202,000)

Fish Nutrition

Dr. Athapol; IDRC (CAD\$ 172,000)

○ COMPUTER SCIENCE

Development of An Expert System Shell

Dr. Vilas; UNU (US\$ 12,000)

○ ENERGY TECHNOLOGY

Research on Strategies

Dr. Dang; French Govt. (FF 580,000)

Regulation, Institutional Structure and Performance of the Electricity Sector

Dr. Dang; EC (US\$ 53,000)

Strengthening ASEAN Capabilities in Energy Audits and Technology Information Development

Dr. Dang; EC (US\$ 325,000)

Energy and Environment Management Strategies: Issues Assessments and Methodology Development

Dr. Dang; French Govt. (FF 620,000)

Effective Utilization of Low Temperature Geothermal Heat

Dr. Mohanty, Mr. Paloso
EGAT, AFME (US\$ 6,000)

Rational Use of Energy in Industries

Prof. Mora, Dr. Mohanty
ADEME (US\$ 50,000)

Membrane Technology

Prof. Mora; UA CNRS (US\$ 6,000)

Energy and Environment

Prof. Mora
CNRS, PICS (US\$ 14,000)

Clean Combustion

Dr. Bhattacharya, Prof. Mora
French Embassy, Manila; (US\$ 5,000)

Water Supply Network

Prof. Mora; LED-SAAM (US\$ 20,000)

Integrated Technique for Sludge Handling in Water Treatment Plants

Mrs. Samorn, Mr. Sompol, Prof. Mora
CIDA (CAD\$ 10,000)

Energy and Environment Cooperation with Canadian Industrialists

Prof. Mora, Dr. Mohanty
CIDA (CAD\$ 10,000)

Environmental Implications and Economics of Selected Electricity Planning Strategies

Dr. Shrestha
CIDA/AIT-CUC PP (Baht 75,000)

Energy Demand-Side Management

Dr. Shrestha, Prof. Lefevre
MOFA (FF 11,000)

Establishment of Energy Performance Standard for Buildings

*Dr. Surapong, Dr. Supachart
Dept. of Energy Affairs; (Baht 960,000)*

ADB - AIT Cooperation

Prof. Lefevre, Dr. Zhai; ADB (US\$ 10,000)

Planning for Natural Gas Utilization in Thailand; *Prof. Lefevre, Mr. Delafosse
AFME (FF 200,000)*

Comparative Study on Residential Energy Demand in Asia; *Dr. Zhai,
Prof. Lefevre; AFME (US\$ 150,000)*

ASEAN Energy Environment Training

*Prof. Lefevre, Mr. Ming,
Mr. Sushil, Ms. Tamtip
EC through AEEMTRC (US\$ 3,000)*

○ ENVIRONMENTAL ENGINEERING

Integrated Pollution Control Measures for Small Tanneries

*Dr. Zhuang, Dr. Nagarur
CDG (Baht 250,000)*

Use of Membrane Technology in Treating Backwash Wastewater Produced at Bangkok Water Treatment Plant; *Mrs. Samorn,
Prof. Mora; CIDA (Baht 75,000)*

Integrated Technique for Sludge Handling; *Mrs. Samorn, Prof. Mora
CIDA/AIT-CUC PP (Baht 75,000)*

○ GEOTECHNICAL AND TRANSPORTATION ENGINEERING

Development of Under-Reamed Piling Technique and Equipment for Foundations of Low-Rise Houses/ Structures in Low-Lying Marshy Areas Consisting of Organic Clay and Peat Deposits; *Prof. Balasubramaniam,
Dr. Bergado; UNDP through UNCHS
Kenya (US\$ 30,000)*

Inverse Analysis Procedure of Geotechnical Coupled Analysis (Phase II); *Dr. Horjo*

*Kiso-Jiban Consultants Co. Ltd., Japan
(Baht 320,000)*

Stability and Ground Movements in Excavation Works in Soft Bangkok Clay; *Dr. Noppadol*

*AIT Research Initiation Grant
(Baht 55,000)*

Use of Inextensible and Extensible Reinforcement for Mekong River Bank Stabilization; *Dr. Bergado
CIDA/AIT-CUC PP (Baht 75,000)*

○ HUMAN SETTLEMENTS DEVELOPMENT

Informal Sector Dissemination/ Demonstration Project; *Dr. Amin
CIDA/AIT-CUC PP (Baht 175,000)*

Urban Informal Sector in Sustainable Urban Development; *Dr. Amin
CIDA/AIT-CUC PP (Baht 125,000)*

Information Systems for Sub-National Level Planning; *Prof. Dias
SPRING Asia Program (US\$ 6,000)*

Women in the Thai Construction Industry; *Dr. Kelkar, Ms. Rost, Dr. Ogunlana, Ms. Austriaco, Ms. Kusakabe
CIDA/AIT-CUC PP, NORAD
(Baht 150,000)*

Women and Forests in India

*Dr. Kelkar, Ms. Mishra
NORAD (Baht 90,000)*

Incorporating Women's Concerns into District Planning; *Dr. Kelkar,
Ms. Yunxian; NORAD (Baht 90,000)*

DATABASE on AIT/HSD Student Research (1975-1991)

*Mr. Kammeier, Mr. Huda
CIDA/AIT-CUC PP (Baht 200,000)*

Agricultural Production Promotion and Farming System Analysis in Lam Dom Noi Self-help Land Settlement, Northeastern Thailand; *Prof. Weber,
Mr. Maskey, Mr. Chung, Mr. Chuchailam
GTZ (US\$ 40,000)*

Evaluation of Veterinary Services in Northeast Thailand; *Prof. Weber,
Mr. Maskey, Mr. Chung, Mr. Chuchailam,
Mr. Aguirre; GTZ (US\$ 33,000)*

Solid Waste Management and Recycling in Bangkok

*Dr. Yap, Mrs. Samorn, Dr. Visvanathan
UNCHS (Habitat) (US\$ 10,000)*

○ INDUSTRIAL ENGINEERING AND MANAGEMENT

Speech Recognition Using Fractals

*Mr. Bohez; AIT Research Initiation Grant
(Baht 60,000)*

Production Planning and Inventory Control Modeling

Prof. Fujiwara; JICA (Baht 219,900)

Reliability Analysis of Flexible Manufacturing Systems; *Dr. Nagarur
AIT Research Initiation Grant
(Baht 50,000)*

Managerial Policies and Techniques for Public Bus Transit Systems in Asia; *Prof. Oudheusden
RUCA (Baht 4,342,200)*

○ INTERDISCIPLINARY NATURAL RESOURCES DEVELOPMENT AND MANAGEMENT

Land-Use Study of Lake Songkhla Basin with VIR and SAR Data

Dr. Aschbacher; ESA (Baht 50,000)

○ IRRIGATION ENGINEERING AND MANAGEMENT

Farm Irrigation System Design Constraints and Improvement in Major Irrigation Projects

Prof. Murty; CIDA (Baht 75,000)

Simulation Study of Bangkok Aquifer System; *Prof. Gupta, Dr. Onta*

*Dept. of Mineral Resources, RTG
(Baht 209,884)*

1992 CONTINUING EDUCATION ACTIVITIES

DATE	ACADEMIC UNIT AT AIT	TOPIC OF TRAINING, SEMINAR, WORKSHOP OR STUDY TOUR/VISIT (Followed in Italics by sponsors/co-organizers)
28 - 30 Jan	AFE	Soil and Water Engineering for Paddy Field Management <i>IREM, CIDA/AIT-CUC PP, JSDIRE, GTZ, IRRI, IIMI</i>
4 - 29 May	AFE	Integrated Aquaculture in Asia <i>NORAD, Mekong Committee, DANIDA, UNICEF, FAO, AADCP, ICLARM, IDRC</i>
15 June - 10 July	AFE	The Nile Tilapia: Techniques for Mass Fry Production and Grow Out <i>AADCP, British Embassy, FAO, NORAD, MEAVSB, IDRC, WORLDCONCERN</i>
7 Sept - 30 Oct	AFE	Regional Aquaculture <i>US Peace Corps</i>
2 - 6 Nov	AFE	Asian Farming Systems <i>IDRC, Ford Foundation</i>
7 - 10 Dec	AFE	International Agricultural Engineering Conference <i>AAAE, CIDA/AIT-CUC PP, IRRI, CSAE, CSAM, CIGR, ASAE</i>
12 - 15 Oct	CS	Forecasting and Graphical Report of Water Quality Data in the Lower Mekong <i>Mekong Secretariat</i>
30 Nov - 11 Dec	CS	6th Asian School of Computer Science <i>CEC, French Govt., Unesco</i>
14 - 16 Dec	CS	V L S I Workshop <i>CEC, French Govt., Unesco</i>
8 Jan	EE	Alcaligenes Eutrophus and its Plasmids Governing for Heavy Metal Resistance or Xenobiotic Degradation: From Gene Sequence to Bioreactors
28 Jan	EE	Ecological Aspects of Methanogens and Sulfate Reducers in Anaerobic Digestion
7-8 Feb	EE	Conventional and Advanced Technology for Wastewater Treatment <i>CIDA/AIT-CUC PP, Industrial Estate Authority (Thailand), CNRS/AFME-France</i>
3 Sept	EE	Promotion of Waste Recycling and Reuse <i>HABITAT</i>
2 - 6 Nov	EE	Second Princess Chulabhorn Science Congress: Environment, Science and Technology - the Challenges of the 21st Century <i>Chulabhorn Research Institute/AIT</i>
20 - 25 Jan	ET	Sectoral Energy Demand Studies in Lao PDR, Vientiane <i>REDP National Team, ESCAP/Govt. of France (MOFA)</i>
3 - 14 Feb	ET	Solar Refrigerator Repair and Maintenance <i>WHO</i>
9 - 15 Feb	ET	Sectoral Energy Demand Studies in Myanmar <i>REDP National Team, ESCAP/Govt. of France (MOFA)</i>
17 - 21 Feb	ET	Sectoral Energy Demand Studies in SR Vietnam <i>REDP National Team, ESCAP/Govt. of France (MOFA)</i>
3 - 7 Mar	ET	Sectoral Energy Demand Studies in Philippines <i>REDP National Team, ESCAP/Govt. of France (MOFA)</i>
23 - 27 Mar	ET	Sectoral Energy Demand Studies in Asia <i>NRD/ESCAP, Govt. of France (MOFA), REDP-P1 Central Consultant</i>
30 Apr	ET	Energy and Environment: Developing Countries Perspectives <i>Sri Lanka Energy Managers Association</i>
28 July	ET	Energy and the Environment <i>CIDA/AIT-CUC PP</i>
18 - 28 Aug	ET	Rational Use of Energy in Industry <i>USAID, ADEME/KONEBA</i>
7 - 11 Sept	ET	Energy Auditing of Biomass Equipment <i>EC</i>
4 - 8 May	GTE	Traffic Engineering and Its Computer Application <i>CIDA, ERTAT</i>
6 - 10 July	GTE	Rock Slope Engineering <i>Royal Irrigation Department (RTG)</i>
28 Sept	GTE	Retaining Structures - Displacement and Design <i>Arup Geotechnics (London)</i>
5 Oct	GTE	Improvement of Soft Clay by Vertical Drain <i>SEAGS, Engineering Institute of Thailand</i>
31 Oct - 1 Nov	GTE	Conservation of Natural Resources and the Environment of Thailand <i>EGAT, UNICEF, UNEP, CIDA, World Bank, Asia Foundation, Siam Cement, PACT</i>

23 - 26 Nov	GTE	Traffic Engineering and Its Computer Application <i>Airport Authority of Thailand, Petroleum Authority of Thailand</i>
23 - 26 Nov	GTE	Computer-Aided Designs in Geotechnical Engineering SEAGS
30 Nov - 4 Dec	GTE	Prediction Versus Performance in Geotechnical Engineering SEAGS
7 - 11 Dec	GTE	Applied Ground Improvement Techniques SEAGS
<hr/>		
30 Jan - 6 Feb	HSD	Population Migration and Human Settlements Planning ILO
2 - 30 Mar	HSD	Data Management for Planning
7 - 11 Mar	HSD	Mass Urban Mapping for Indian Cities RHUDO, USAID (Thailand)
15 - 21 Aug	HSD	Environment and Sustainable Development <i>Sri Lankan University - NGO Action Research Network</i>
June 1992	HSD	Thailand Urban Development Chulalongkorn University
21 - 24 Sept	HSD	Role of the City in Environmental Management USAID
3 Sept	HSD	Solid Waste Recycling and Reuse in Bangkok <i>UNCHS (Habitat), AGRO-VISION Holland</i>
14 - 17 Oct	HSD	Issues in Rural Development, Group I (Phnom Penh) <i>Cambodian Research and Development Institute</i>
30 Nov - 3 Dec	HSD	Managing the Mega-urban Regions of ASEAN Countries: Policy Challenges and Responses CIDA/AIT-CUC PP, Canada-ASEAN Center (Singapore)
2 - 5 Dec	HSD	Issues in Rural Development, Group II (Phnom Penh) <i>Cambodian Research and Development Institute</i>
<hr/>		
30 Jan	IEM	Taguchi Methods in Quality Control Thammasat University
3 - 5 Feb	IEM	Manufacturing Resources Planning (MRP2) CIDA/AIT-CUC PP
17 - 19 Feb	IEM	Plant Machinery and Equipment Maintenance, Replacement and Reliability CEC
16 Mar - 5 June	IEM	Small Business Management CEC
6 Apr - 4 May	IEM	CNC Training
18 May - 26 June	IEM	Project Management CEC
15 June - 18 Sept	IEM	Comprehensive Training Program on CAM UNIDO
11 & 19 Aug,		
9 & 11 Sep	IEM	GIS Training for BMTA System Analysts <i>Public Bus Project (Bangkok Mass Transit Authority)</i>
24 Aug - 4 Sept	IEM	Manufacturing Resources Planning (MRP II) Application
21 Sept - 30 Oct	IEM	Training of Trainers on Small Business Management CEC
20 - 21 Oct	IEM	Profitability of Clean Technologies in Leather Tanning Industry CDG
7 - 11 Dec	IEM	CNC Training (Milling)
30 Nov - 4 Dec	IEM	CNC Training (Turning)
9 Nov - 11 Dec	IEM	Ferrocement Technology for Construction Industry LRDC
<hr/>		
6 Jan - 10 Apr	INRDM	Applied Remote Sensing US-ASEAN
6 Jan - 10 Apr	INRDM	Environmental Development Planning <i>CIDA, Sarawak Agricultural Development Project</i>
13 - 17 Apr &		
20 - 24 Apr	INRDM	GIS
4 - 8 May	INRDM	GIS Mekong Secretariat
11 May - 20 Aug	INRDM	Natural Resources Information Management CIDA, Sarawak Agricultural Development Project, Winrock, British Technical Cooperation
2 June	INRDM	Radarsat - ITC Educational Program Radarsat International
11 - 29 Aug	INRDM	GIS
19 - 26 Aug	INRDM	ERS-1 & SPOT: A Complementary Tool for Natural Resources Management <i>ESA, SPOT Asia, CNES</i>
7 Sept - 11 Dec	INRDM	Natural Resources Management and Conservation in a Watershed Area <i>CDG, British Technology Cooperation, Winrock International</i>
7 - 11 Sept	INRDM	GIS Mekong Secretariat
15 - 23 Sept	INRDM	Chilika Lake Project CIDA, India-Canada Cooperation Office
2 - 27 Nov	INRDM	GIS Vietnam-Sweden Program
7-11 & 14-18 Dec	INRDM	GIS
15 Dec	INRDM	Natural Resources Development and Environmental Considerations

27 - 31 Jan	LC	Language Workshop <i>AIT Aquaculture Outreach Program</i>
8 - 12 June	LC	Language Program Evaluation Workshop <i>AIT Aquaculture Outreach Program</i>
June	LC	Speaking Skills (Regional Community Forestry Training Center) <i>Kasetsart University</i>
July	LC	Thesis/Dissertation Writing <i>HSD, CIDA</i>
25 Mar	SOM	Korean Experience in Science and Technology <i>EC</i>
15 - 17 June	SOM	Economic and Financial Analysis of Biomass Energy Projects <i>EC</i>
16 - 20 Nov	SOM	Management of Technology in Asia <i>MOTIC</i>
6 - 10 Dec	SOM	Multi-Cultural Management: The Asian and European Perspectives <i>MOTIC</i>
15 Jan	SEC	Interactive Behavior of Local and Overall Buckling of Thin-walled Structures
24 Jan	SEC	Kuwait and Kuala Lumpur Telecommunications Tower Projects
24 Feb	SEC	Introduction to Fracture Mechanics and Its Engineering Applications
26 - 28 Feb	SEC	Fatigue and Fracture Control Design of Bridge Structures, and Maintenance Technology
9 Mar	SEC	Vibration Control of Bridges and Buildings
25 Mar	SEC	Active Vibration Control of Structures: Theory and Experiment
26 June	SEC	Exact Stiffness Method for Dynamics of Layered Anisotropic Materials
29 June	SEC	Multi-story Buildings: Efficient Computer Implementation
10 & 24 July	SEC	High Performance Concrete
20 July	SEC	Qualitative Computations: Key to More Efficient Structural Analysis
11 Aug	SEC	Productivity Improvement and Worker Motivation <i>Construction Management Association of America</i>
1 Sept	SEC	Cable-Stayed Bridges Design Concepts and Their Future
6 Oct	SEC	Cement Hydration and Thermally Induced Stress of Massive Concrete Structures
27 Nov	SEC	Construction Automation and Robotics <i>Scientific and Industrial Research Origin of Australia</i>
1 - 5 June	TC	ISDN
15 Apr	LRDC(MOTIC)	Euro-Asia Technological Cooperation: Human Resource Development Perspective <i>EC, SOM</i>
14 - 25 July	LRDC (IFIC)	Ferrocement End-User Training for Bengawan Solo River Development Project <i>IDRC, Institut Teknologi Bandung</i>
15 - 26 June	LRDC(IFIC)	Ferrocement End-User Training for Mindanao, Philippines <i>IDRC, Mindanao State University, Iligan Institute of Technology</i>
29 June - 4 July	LRDC(IFIC)	Ferrocement End-User for Sarawak Department of Rural Development <i>IDRC, Universiti Pertanian, Malaysia</i>
21 - 22 Aug	LRDC(IFIC)	Advancement of Ferrocement Technology <i>CIDA, MSU, Iligan Institute of Technology</i>
3 Sept	LRDC(IFIC)	Ferrocement Technology <i>CIDA, Bangladesh University of Science and Technology</i>
5 Nov	LRDC(IFIC)	Electronic Mail for Academic Research <i>Information Management Professionals Association</i>
9 Nov - 11 Dec	LRDC(IFIC)	Trainers' Training on Ferrocement Technology <i>Commonwealth Secretariat, SEC</i>
3 Feb - 6 Mar	LRDC(ERIC)	Information Repackaging and Consolidation
9 - 13 Feb	LRDC(ERIC)	Desktop Publishing
15 - 26 June	LRDC(ERIC)	Repackaging and Desktop Publishing <i>UNIDO</i>
3 - 7 Aug	LRDC(ERIC)	Desktop Publishing
31 Aug - 20 Nov	LRDC(ERIC)	New Information Technologies and Computerized Library Services
27 Jan - 28 Feb	CEC	Regional Development Management <i>World Bank</i>
27 Jan - 14 Feb	CEC	Study Visit - Sri Lankan Officers and Farmer Representatives <i>USAID/ADB</i>
3 - 28 Feb	CEC	Community Water Supply and Sanitation for Developing Countries <i>Multi</i>

17 - 19 Feb	CEC	Plant Machinery and Equipment (Maintenance, Replacement and Reliability) <i>Multi</i>
17 - 28 Feb	CEC	Education Resource Management <i>Ministry of Education and Culture, Indonesia</i>
17 Feb - 13 Mar	CEC	Toxic and Hazardous Waste Management <i>Multi</i>
24 - 27 Feb	CEC	Study Tour - Senior BWDB Officials <i>CIDA</i>
15 Mar - 7 June	CEC	Small Business Management for Cambodians <i>Sasakawa Peace Foundation</i>
15 Mar - 5 July	CEC	Project Management for Cambodians <i>Sasakawa Peace Foundation</i>
16 - 20 Mar.	CEC	Monitoring Health Programs and Projects <i>SIDA</i>
30 Mar - 10 Apr	CEC	Human Resource Management <i>Multi</i>
19 - 25 April	CEC	Study Visit - Vietnamese Officials (Agriculture and Water Resources Development) <i>Mekong Secretariat</i>
20 Apr - 29 May	CEC	Management of Training Centers <i>Multi</i>
27 April - 1 May	CEC	Opium Eradication/Rural Development <i>USAID</i>
4 - 15 May	CEC	Management of Conflict and Change in Organizations <i>Multi</i>
11 - 29 May	CEC	Study Visit: - Sri Lankan Institutional Development Officers <i>USAID</i>
18 May - 12 June	CEC	Project Monitoring and Evaluation <i>Multi</i>
18 May - 26 June	CEC	Project Management <i>NORAD, UNDP, GTZ, USAID</i>
18 - 23 May	CEC	Study Visit - Vietnamese Officials (Hydraulic Researches) <i>UNDP</i>
8 - 26 June	CEC	Study Visit - Sri Lankan Farmer Representatives <i>USAID</i>
8 - 26 June	CEC	On-farm Water Management <i>World Bank</i>
15 - 26 June	CEC	Study Tour - Sri Lankan Agricultural Instructors/Extension Officers <i>USAID</i>
29 June - 10 July	CEC	Study Tour - Sri Lankan Agricultural Instructors/Extension Officers <i>USAID</i>
29 June - 24 July	CEC	Small Business Management <i>Multi</i>
13 - 31 July	CEC	Rural Water Supply and Sanitation for Chinese Officials <i>World Bank</i>
27 - 30 July	CEC	Sustainable Ocean Development and Management <i>CIDA, Canada-ASEAN Center</i>
27 July - 21 Aug	CEC	Environmental Impact Assessment and Review <i>CIDA, SIDA, USAID</i>
3 - 21 Aug	CEC	Managing Rural Development (for Pakistan) <i>USAID</i>
24 Aug - 16 Oct	CEC	Planning and Design of Small Scale Irrigation Projects <i>Multi</i>
27 - 28 Aug	CEC	Human Resources Requirements for Natural Resources Information Management <i>French Govt.</i>
31 Aug - 11 Sept	CEC	Planning and Design of Buildings and Environment for Older and Disabled Adults <i>Help Age International</i>
7 - 25 Sept	CEC	Environment for Journalists and NGO Workers <i>FINNIDA</i>
7 Sept - 2 Oct	CEC	Tourism Management <i>Indonesian Govt.</i>
7 Sept - 18 Dec	CEC	Irrigated Agricultural Development and Management <i>British Council</i>
21 Sept - 30 Oct	CEC	Training of Trainers on Small Business Management <i>PT Hasfarm Dian Konsultan-Jakarta</i>
30 Sept - 13 Oct	CEC	Small Scale Water Resources Development <i>Mekong Secretariat</i>
9 - 23 Oct	CEC	Community Water Supply for Developing Countries <i>FINNIDA</i>
12 - 23 Oct	CEC	Training Management <i>Multi</i>
19 - 30 Oct	CEC	International Marketing Management <i>Academy for Educational Development (Pakistan)</i>
19 Oct - 13 Nov	CEC	Managing Rural Development <i>USAID, Sri Lankan Ministry of Policy Planning</i>
9 - 27 Nov	CEC	Urban Drainage in Developing Countries <i>UNESCO, WHO</i>
13 - 20 Nov	CEC	Community Involvement in Education <i>USAID</i>
16 - 20 Nov	CEC	Acid Rain and Emissions in Asia <i>Agricultural University WAGENINGEN, The Netherlands</i>
23 Nov - 11 Dec	CEC	On-Farm Water Management <i>Japan Engineering Co., Ltd.</i>
23 Nov - 18 Dec	CEC	Municipal Management for Lao Officials <i>UNCHS</i>
30 Nov - 11 Dec	CEC	Planning with Women in Development <i>Agriculture Sector Team/CIDA, CIDA/AIT CUC PP, Helvetas Bhutan, NORAD, UNDP</i>
23 Nov - 18 Dec	CEC	Agricultural Extension <i>Ethiopian Department of Agricultural Extension</i>

*Multi-sponsorship applies to CEC's international/advertised courses

**ASIAN INSTITUTE OF TECHNOLOGY
BALANCE SHEETS
AS AT 30th JUNE, 1992 AND 1991**

	Note	Unrestricted Current Fund		Restricted Fund		Capital Fund		Sponsored Program Fund		Agency Fund		Total	
		1992	1991	1992	1991	1992	1991	1992	1991	1992	1991	1992	1991
		BAHT	BAHT	BAHT	BAHT	BAHT	BAHT	BAHT	BAHT	BAHT	BAHT	BAHT	BAHT
ASSETS													
Cash at banks		10,125,446	4,280,985	6,231,470	6,483,221	8,043,115	4,505,546	48,508,065	22,681,343	34,413,359	17,512,023	107,321,455	55,463,118
Investments	2	16,233,852	14,498,820	278,089,309	281,399,445	43,013,241	35,581,105	28,267,984	58,320,132	5,996,412	24,753,621	371,600,798	414,553,123
Advance duties and taxes	3	10,837,450	14,275,903	-	-	-	-	-	-	-	-	10,837,450	14,275,903
Accounts receivable and accrued income		3,391,648	6,772,055	7,873,305	7,198,438	226,636	1,202,259	4,984,913	1,986,329	534,643	815,712	17,011,145	17,974,793
Deposits		822,593	351,593	160,407	528,300	-	-	-	-	-	-	983,000	879,893
Inventories		-	-	863,413	938,326	-	-	-	-	-	-	863,413	938,326
Due from other funds		-	-	27,502,094	27,502,094	-	-	-	-	-	-	27,502,094	27,502,094
Fixed assets	4	-	-	-	-	1,319,041,201	1,164,610,322	-	-	-	-	1,319,041,201	1,164,610,322
TOTAL ASSETS		41,410,989	40,179,356	320,719,998	324,049,824	1,370,324,193	1,205,899,232	81,760,962	82,987,804	40,944,414	43,081,356	1,855,160,556	1,696,197,572
LIABILITIES AND FUND BALANCES													
LIABILITIES													
Accounts payable and accrued expenses		2,209,886	1,006,640	2,836,969	2,612,940	2,387,752	1,186,295	1,170,817	6,058,779	651,377	543,125	9,256,801	11,407,779
Deposits		685,800	658,000	956,982	652,279	-	-	-	-	-	-	1,642,782	1,310,279
Due to other funds		588	-	27,502,094	27,502,094	-	-	-	-	-	-	27,502,682	27,502,094
TOTAL LIABILITIES		2,896,274	1,664,640	31,296,045	30,767,313	2,387,752	1,186,295	1,170,817	6,058,779	651,377	543,125	38,402,265	40,220,152
FUND BALANCES	6	38,514,715	38,514,716	289,423,953	293,282,511	1,367,936,441	1,204,712,937	80,590,145	76,929,025	40,203,037	42,538,231	1,816,758,291	1,655,977,420
TOTAL LIABILITIES AND FUND BALANCES		41,410,989	40,179,356	320,719,998	324,049,824	1,370,324,193	1,205,899,232	81,760,962	82,987,804	40,944,414	43,081,356	1,855,160,556	1,696,197,572

The accompanying notes are an integral part of the financial statements.



PRESIDENT

ASIAN INSTITUTE OF TECHNOLOGY
STATEMENTS OF REVENUES AND EXPENDITURES – UNRESTRICTED CURRENT FUND AND RESTRICTED FUND – GENERAL
FOR THE YEARS ENDED 30th JUNE, 1992 AND 1991

	Unrestricted Fund		Restricted Fund		Total
	1992 BAHT	1991 BAHT	1992 BAHT	1991 BAHT	
REVENUES :					
Tuition and fees :					
Academic division	190,821,890	166,141,084	-	-	166,141,084
Computer center	6,164,281	6,733,249	-	-	6,733,249
	196,986,171	172,874,333	-	-	172,874,333
Gifts and contributions :					
Cash	7,826,991	8,639,639	46,627,528	25,119,618	54,454,519
In kind (Note 5)	-	-	72,675,117	76,377,725	76,377,725
	7,826,991	8,639,639	119,302,645	101,497,343	111,136,982
Grants and contracts	9,539,564	-	6,773,146	7,639,816	7,639,816
Sales and services :					
Educational activities	269,349	937,239	62,418,313	53,674,032	54,611,271
Others	-	-	1,300,840	1,016,205	1,016,205
	269,349	937,239	63,719,153	54,690,237	55,627,476
Income from investments	19,473,017	25,242,475	-	-	25,242,475
Auxiliary services	-	-	76,137,443	55,715,824	55,715,824
Recovery of indirect costs	9,251,033	12,314,145	-	-	12,314,145
AIT sponsored programs	-	-	10,621,151	6,141,609	6,141,609
Physical plant support	-	-	36,123,032	24,160,599	24,160,599
Exchange stabilization	-	-	5,736,111	3,372,637	3,372,637
Miscellaneous	26,689	341,274	9,341,247	7,134,015	7,475,289
TOTAL REVENUES	243,372,814	220,349,105	327,753,928	260,352,080	480,701,185
EXPENDITURES :					
Salaries and associated costs :					
Cash	140,119,751	123,627,856	8,525,881	6,376,656	148,645,632
In kind (Note 5)	-	-	72,675,117	76,377,725	76,377,725
	140,119,751	123,627,856	81,200,998	82,754,381	206,382,237
Academic units operating costs	26,094,280	23,130,034	87,051,689	73,517,354	96,647,388
Student related costs	1,195,873	1,368,501	6,147,982	5,756,935	7,065,436
Administrative support costs	3,765,583	14,592,764	84,323	235,342	14,828,106
Capital purchases	9,043,798	10,117,301	1,074,730	1,504,373	11,621,674
Campus wide services	55,701,204	40,830,569	-	-	40,830,569
Physical plant support costs	-	-	49,365,749	30,723,223	30,723,223
AIT sponsored programs	-	-	9,641,231	1,910,346	1,910,346
Auxiliary services costs	-	-	86,310,921	36,669,558	36,669,558
Exchange stabilization	-	-	2,577,840	7,792,942	7,792,942
Other costs	-	-	14,446,318	6,989,668	6,989,668
TOTAL EXPENDITURES	235,920,489	213,607,025	337,901,781	247,854,122	461,461,147
EXCESS OF REVENUES OVER EXPENDITURES					
(EXPENDITURES OVER REVENUES)	7,452,325	6,742,080	(10,147,853)	12,497,958	19,240,038

The accompanying notes are an integral part of the financial statements.

TO THE BOARD OF TRUSTEES OF THE ASIAN INSTITUTE OF TECHNOLOGY

We have examined the balance sheets of Asian Institute of Technology as at 30th June, 1992 and 1991, the statements of revenues and expenditures of unrestricted current fund and restricted fund-general and the related statements of changes in fund balances for the years then ended. Our examinations were made in accordance with generally accepted auditing standards and accordingly included such tests of the accounting records and such other auditing procedures as we considered necessary in the circumstances.

In our opinion, the aforementioned financial statements present fairly the financial position of Asian Institute of Technology as at 30th June, 1992 and 1991, the revenues and expenditures of unrestricted current fund and restricted fund-general and changes in fund balances for the years then ended, in conformity with generally accepted accounting principles appropriate for non-profit organisation as set out in Note 1 to the financial statements, applied on a consistent basis.


Ernst & Young

Bangkok: 16th October 1992

ASIAN INSTITUTE OF TECHNOLOGY NOTES TO FINANCIAL STATEMENTS

NOTE 1 - SUMMARY OF SIGNIFICANT ACCOUNTING POLICIES

1.1 Fund accounting

In order to ensure observance of limitations and restrictions placed on the use of the resources available to the Institute, the books of account of the Institute are maintained in accordance with the principles of "fund accounting". This is the procedure by which resources for various purposes are classified for accounting and reporting purposes into funds which are in accordance with activities or objects specified. Within each fund group, fund balances which are restricted by outside sources are so indicated and are distinguished from unrestricted fund allocated to specific purposes by action of the governing board. As for unrestricted fund, the governing board retains full control to use in achieving any of its institutional purposes.

Investments income are recognised as income in the unrestricted current fund except for endowments, general reserve and capital funds which are accounted for in the fund to which it is restricted.

Other unrestricted revenues are recognised as income in the unrestricted current fund.

Restricted contributions, grants, appropriations and other restricted resources are accounted for in the appropriate restricted funds.

1.2 Accrual basis

The financial statements have been prepared on an accrual basis except for depreciation of fixed assets and contributions.

Depreciation of fixed assets is not recorded in accordance with the fund accounting concept.

Contributions are recognised on a cash basis due to the uncertainty in receiving contributions which are at the discretion of the donors.

The statement of revenues and expenditures of unrestricted current fund and restricted general fund is

a statement of financial activities of current fund related to the current reporting period. It does not purport to present the results of operations for the period as would an earnings statement.

1.3 Contributions in kind

Contributions in kind are reflected in the financial statements on a fair value basis at the time of receipt.

1.4 Inventories

Inventories are valued at the lower of cost (first-in, first-out basis) and net realisable value.

1.5 Fixed assets

Fixed assets are stated at cost at the time of acquisition or fair value at the time of donation in the case of contributions in kind.

1.6 Foreign currencies

Exchange rates adopted:-

Foreign currency transactions

during the year-at the rates ruling on the transaction dates.

Assets and liabilities in foreign currency outstanding on the balance sheet date-at the rates ruling on the balance sheet dates.

Exchange gains and losses are recognised as revenue and expenditure and taken up in the statement of changes in fund balances.

NOTE 2 - INVESTMENTS

	1992 BAHT	1991 BAHT
Time deposits with banks	187,939,433	159,509,814
Deposits with finance companies	183,661,365	255,043,309
	<u>371,600,798</u>	<u>414,553,123</u>

The investments of each fund as at 30th June, 1992 and 1991 are as follows:

	1992 BAHT	1991 BAHT
Unrestricted current fund	16,233,853	14,498,820
Restricted fund		
General	71,518,415	82,354,762
Endowment	59,562,588	57,346,729
General reserve	147,008,306	141,697,954
	<u>278,089,309</u>	<u>281,399,445</u>
Capital fund		
Liquid assets	35,096,883	24,608,855
Repairs and Maintenance reserve	7,916,357	10,972,250
	<u>43,013,240</u>	<u>35,581,105</u>
Sponsored program fund	28,267,984	58,320,132
Agency fund	5,996,412	24,753,621
	<u>371,600,798</u>	<u>414,553,123</u>

Time deposits with banks amounting to Baht 12.8 million (1991: Baht 13.9 million) of the restricted general reserve fund has been pledged with a bank as a collateral against outstanding letter of guarantee issued by the bank (see Note 8).

NOTE 3-ADVANCE DUTIES AND TAXES

This represents advance duties and taxes payments to the Government of Thailand which will be subsequently refunded to the Institute in accordance with the letter of the Office of the Secretary-General to the Cabinet dated 16th July, 1985. The refund of the advance is for non Thai faculty and staff and is subject to the annual government budget of the Government of Thailand.

The details of advance duties and taxes as at 30th June, 1992 and 1991 are as follows:-

	1992 BAHT	1991 BAHT
Employees personal income tax	10,000,000	12,970,999
Import duty and business tax		
Automobile	357,990	455,612
Wine and spirits	471,856	838,154
Other	7,604	11,138
	<u>10,837,450</u>	<u>14,275,903</u>

NOTE 4 - FIXED ASSETS

	1992 BAHT	1991 BAHT
Campus development	22,031,502	21,147,459
Buildings	491,864,096	485,009,984
Furniture and equipment	587,199,727	525,834,817
Library acquisitions	78,175,811	71,295,841
Construction in progress	139,770,065	61,322,221
	<u>1,319,041,201</u>	<u>1,164,610,322</u>

Depreciation for the year amounting to Baht 61,598,143 (1991 : Baht 63,586,805) has not been recorded in accordance with the fund accounting concept.

NOTE 5 - CONTRIBUTIONS IN KIND - SERVICES

This represents services donated to the Institute in the form of seconded faculty or staff of which the value is estimated on a basis in accordance with the approved Institute professional salary scale. The amounts are recognised as revenues and expenditures in the restricted general fund.

NOTE 6 - FUND BALANCES

	1992 BAHT	1991 BAHT
Restricted fund		
General	52,947,813	63,095,665
Endowment	59,861,252	57,775,180
General reserve	176,614,888	172,411,666
	<u>289,423,953</u>	<u>293,282,511</u>
Capital fund		
Fixed assets	1,319,041,201	1,164,610,323
Liquid assets		
- Unallocated	10,392,298	7,490,784
Liquid assets		
- Allocated	30,586,585	21,639,581
Repairs and Maintenance reserve	7,916,357	10,972,249
	<u>1,367,936,441</u>	<u>1,204,712,937</u>

NOTE 7 - CAPITAL COMMITMENTS

As at 30th June, 1992, the Institute had capital commitments in respect of building construction amounting to approximately Baht 9.0 million (1991 : Baht 40.3 million).

NOTE 8 - BANK GUARANTEES

As at 30th June, 1992, there were outstanding bank guarantees of approximately Baht 1.2 million (1991 : Baht 10.1 million) issued by the bank on behalf of the Institute in respect of certain performance bonds as required in the normal course of business of the Institute.

ABBREVIATIONS

AAAAE	Asian Association for Agricultural Engineering	MSU	Mindanao State University
AADCP	ASEAN-EEC Aquaculture Development and Coordination Programme	NHA	National Housing Authority, Thailand
ADB	Asian Development Bank	NORAD	Norwegian Agency for International Development
ADEME	Agence de l'Environnement et de la Maitrise de l'Energie	ODA	Overseas Development Administration, UK
AEEMTRC	ASEAN-EC Energy Management Training and Research Center	OFDA	Office of Foreign Disaster Assistance
AFME	French Agency for Energy Management	PACT	Private Agencies Collaborating Together
ASAE	American Society of Agricultural Engineers	PICS	Programme Interdisciplinaire de Cooperations
ASEAN	Association of Southeast Asian Nations	REDP	Regional Energy Development Program
CDG	Carl Duisberg Gesellschaft	RELC	Regional Language Center
CIDA/AIT CUC PP	Canadian International Development Agency/AIT Canadian University Consortium Partnership Project	RTG	Royal Thai Government
CIGR	International Commission of Agricultural Engineering	RUCA	State University of Antwerp
CNES	Centre National D'Etudes Spatiales	RHUDO	Regional Housing and Urban Development Office, USAID
CNRS	Centre National pour la Recherche Scientifique	SEAGS	Southeast Asian Geotechnical Society
CSAE	Chinese Society of Agricultural Engineers	SIDA	Swedish International Development Authority
CSAM	Chinese Society of Agricultural Machinery	SPOT	System Pour l' Observation de la Terre
DAAD	German Academic Exchange Service	UA	Unite Associe
DANIDA	Danish International Development Agency	UNCHS	UN Commission for Human Settlements
DTEC	Department of Technical and Economic Cooperation, Royal Thai Government	UNCTAD	UN Conference on Trade and Development
EC	European Community	UNIDO	UN Industrial Development Organization
EGAT	Electricity Generating Authority of Thailand	UNDP	UN Development Program
EIT	Engineering Institute of Thailand	UNDRO	UN Disaster Relief Organization
ERTAT	Expressway and Rapid Transit Authority of Thailand	UNEP	UN Environment Program
ESCAP	Economic and Social Commission for Asia and the Pacific, UN	UNESCO	UN Educational, Scientific and Cultural Organization
FAO	Food and Agriculture Organization, UN	UNFPA	UN Fund for Population Activities
FINNIDA	Finnish International Development Agency	UNHCR	UN High Commissioner for Refugees
GIS	Geographic Information Systems	UNICEF	UN Children's Fund
GRID	Global Resources Information Database	UNITAR	UN Institute for Training and Research
GTZ	German Agency for Technical Cooperation	UNU	United Nations University
IAEA	International Atomic Energy Agency	USAID	United States Agency for International Development
ICIMOD	International Center for Integrated Mountain Development	WB	World Bank
ICLARM	International Center for Living Aquatic Resources Management	WHO	World Health Organization
IDRC	International Development and Research Center, Canada	WMO	World Meteorological Organization
IIT	Indian Institute of Technology	OFFICES IN THE INSTITUTE	
IIMI	International Irrigation Management Institute	AFE	Agricultural and Food Engineering
ILO	International Labour Organization	CS	Computer Science
INRIA	National Institute of Research in Computer Science and Automation, France	EE	Environmental Engineering
ITU	International Telecommunications Union	ET	Energy Technology
IRRI	International Rice Research Institute	GTE	Geotechnical and Transportation Engineering
IUCN	International Union for the Conservation of Nature	HSD	Human Settlements Development
JICA	Japan International Cooperation Agency	IEM	Industrial Engineering and Management
JSDIRE	Japan Society of Irrigation, Drainage and Reclamation Engineering	SEC	Structural Engineering and Construction
KEIDANREN	Federation of Economic Organizations, Japan	WRE	Water Resources Engineering
KU	Kasetsart University, Thailand	SOM	School of Management
KMIT	King Mongkut's Institute of Technology	TC	Telecommunications
LED-SAAM	Lyonnaise Des Eaux Dunex-Macau Waterworks	IREM	Irrigation Engineering and Management
MOFA	Ministry of Foreign Affairs, France	INRDM	Interdisciplinary Natural Resources Development and Management Program
MOSTE	Ministry of Science, Technology, and Energy, Royal Thai Government	ADPC	Asian Disaster Preparedness Center
		CEC	Continuing Education Center
		RCC	Regional Computer Center
		LRDC	Library and Regional Documentation Center
		LC	Language Center
		RRDC	Regional Research and Development Center
		RERIC	Regional Energy Resources Information Center
		ENSIC	Environmental Sanitation Information Center
		IFIC	International Ferrocement Information Center
		AGE	Asian Geotechnical Engineering Information Center
		MOTIC	Management of Technology Information Center
		PCAD	Program in Computer Applications Development

The 1992 Annual Report of the Asian Institute of Technology
has been prepared by the Office of Media and Information Services

Released April 1993

Editor: Teresita M. Padilla

Production Staff:

Natnipha Vimuktanon and Pornpen Payakkaporn (Production Assistants)

Apichart Ngarmniyom (Senior Graphic Artist)

Wiwat Upalakalin (Artist)

Paitoon Tinapong and Somsak Supakorn (Photographers)

Asian Institute of Technology

Street Address:
Km. 42 Phaholyothin Highway
Pathum Thani 12120
Thailand

Postal Address:
GPO Box 2754
Bangkok 10501
Thailand

Tel. 516-0110
Cable: AIT-Bangkok
Telex: 84276TH
Fax: (66-2) 516-2126, 516-1418

