

ASIAN INSTITUTE OF TECHNOLOGY

Annual Report 1995





COVER: Versatile as it is strong and durable, the bamboo is symbolic of the Institute's inherent character, which has been fittingly recognized by prestigious awards received over the past decade. Under a new leadership, AIT, strengthened by its accomplishments, faces the challenges of a new era.

The 1995 Annual Report of the Asian Institute of Technology has been prepared by the Office of Media and Information Services.

Released May 1996

Editor: Teresita M. Padilla

Production Staff: Natnipa Vimuktanon
(Editorial Assistant)
Apichart Ngarmniyom
and Wiwat Upalakalin (Artists)
Paitoon Tinapong
and Somsak Supakorn (Photographers)

CONTENTS

Highlighting 1995	2
AIT Awards	3
President's Message	6
New Aims, New Challenges <i>(Farewell Remarks)</i>	8
Academic Affairs	10
Partnerships and Collaborations	18
Central Administration	24
Alumni Relations	26
 <i>Appendix</i>	
1995 List of Faculty Members	30
1995 Board of Trustees	36
Financial Statements	38
Institute Administration	44
AIT Organizational Chart	45
Abbreviations	46

HIGHLIGHTING 1995

NEW AIT PRESIDENT

The year saw the successful search for a new President of AIT to succeed Prof. Alastair M. North on his retirement. The task was carried out by a nine-person Presidential Search Committee, elected by the Board of Trustees in January 1995. The PSC, chaired by H.E. Mr. Manfred G. von Nostitz, the Canadian Ambassador to Thailand, and with trustee, faculty, and alumni representation, worked throughout 1995 to identify a candidate to recommend to the Board. The PSC received communications from 121 potential candidates,



Prof. Downer

including 98 full applications. After the interview of 18 short-listed applicants in Bangkok, London and New York, three candidates were invited to Bangkok in December 1995 for final evaluation. The Board of Trustees has accepted the Committee's recommendation for the next President of AIT. He is Prof. Roger G. H. Downer, former Vice President for University Relations and Professor of Biology and Chemistry of the University of Waterloo in Ontario, Canada. He will assume office on 1 August 1996.

NEW ALUMNI PRESIDENT

The AIT Alumni Association launched its search for a new president in June 1995. Mr. Surendra Shrestha (CS '80), Director, UNEP Environment Assessment in the Asia-Pacific Region, was elected to the post in January 1996, succeeding Mrs. Chuanpit Dhamasiri (EE '68). He will serve until December 1997.



Mr. Shrestha

LANDMARK EVENTS

January 27 Thai Prime Minister H. E. Mr. Chuan Leekpai visited the Institute. He said, "As a multinational center of higher learning, AIT represents not only Asian scholarship but also expanding ties among Asians. Knowledge is cross-cultural in nature. Nowhere is this more evident than at AIT."

February 13 The AIT Center in Vietnam officially opened a diploma program in industrial systems engineering, with support from the Government of Belgium.

April 20 Of the first 30 graduates from the Swiss-AIT Vietnam Management Development Program in Ho Chi Minh City, 23 joined the School of Management and received Master's degrees. SAV is now on its third academic program (1995-97).

November 13 The Asian Management Awards for Development Management was presented to AIT, in recognition of its contributions to human resources development and sustainable development in the region.

STUDENTS AND ALUMNI

By program, the five largest groups of graduates were ranked as follows: management (84 graduates), environmental engineering (52), agricultural and food engineering (51), and 47 graduates each for human settle-

ments development and geotechnical and transportation engineering. The three graduations in 1995 brought the total number of alumni since 1961 to 7554.

Five largest groups of graduates in 1995

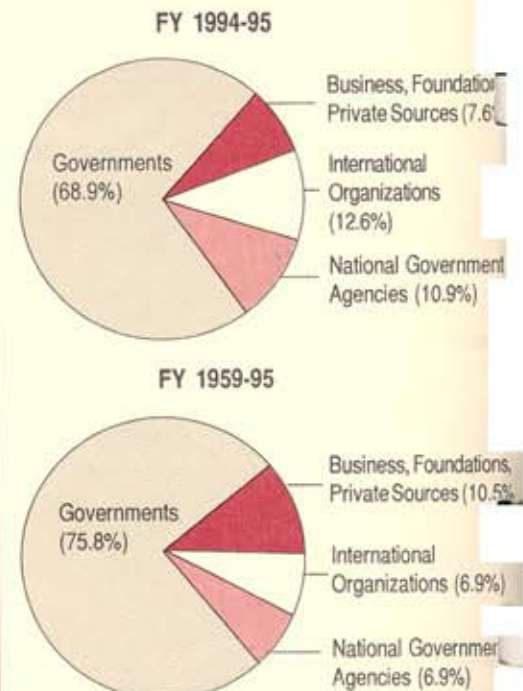


Five largest groups of alumni (1961-1995)



RESOURCE GENERATION

- Total contributions received in FY 1994-95 : Baht 791,703,000
- Total contributions by sector (% of total contributions received)





1987
**Science and Technology
for Development Award**

*presented by the
United States Agency for
International Development
and the National Research
Council*

*for effectively transferring
industrial technology and
skills to the developing world,
by training scientists and
engineers from
Asian countries*



1989
**Ramon Magsaysay Award
for International
Understanding**

*for shaping a new generation
of engineers and managers
committed to Asia, in an
atmosphere of academic
excellence and regional
camaraderie*



1994
**Development
Management Award**

*presented by the
Asian Management Awards*

*for fostering manpower
development, technological
change and sustainable
growth in the region,
through advanced
education and research*



SCIENCE AND TECHNOLOGY FOR DEVELOPMENT AWARD

AIT and eight other organizations were presented special awards by USAID and the National Research Council, USA, in recognition of their significant contributions to science and technology. The presentation was made on 22 June 1987 in Washington D.C.

The awards presentation was the centerpiece of a symposium, **The Role of Science and Technology in Development**, which was held to commemorate USAID's 25th anniversary.

While the awards themselves were non-monetary, they provided an important development benefit by encouraging continued attention to the significant role of institutions in the development process.

Prof. Milton E. Bender, Jr., first President of AIT, expressed his appreciation of the award in these words: "I said many times in the past that if this Institution could survive in the first 20 to 30 years, its future was absolutely secure. I think this award is further assurance of the stability of AIT and its recognized worth to Asia."

The Science and Technology for Development Award was presented to President North by Mr. Victor Rabinowitch, Director of the Committee for International Security and Arms Control, National Academy of Science, USA.



RAMON MAGSAYSAY AWARD FOR INTERNATIONAL UNDERSTANDING

The late Philippine President, Ramon Magsaysay, was one of the most outstanding leaders of our time. His objective was to improve the lot of his countrymen and he approached the task with selfless devotion. The annual Ramon Magsaysay Awards gives recognition to those ideals which characterized his life and the courageous service which he rendered to the people of the Philippines. The Awards honors individuals and organizations in different fields of service and endeavors.

As Institute President Alastair North proclaimed at the presentation ceremony on 31 August 1989, "My pride and pleasure are the greater since you honor not one person, but the many who have made the Institute what it is today.

"The endeavors and successes of more than four thousand Institute alumni provided the basis of this signal honor. These graduates now live as friends, colleagues, indeed, as one family that crosses national boundaries and differences in political ideology or religion. This corps of dedicated persons is the success of the Institute, the source of our honor and pride."

In 1989 the Ramon Magsaysay Awards honored AIT, represented by President North (standing extreme left), and four private individuals for their exemplary roles in different fields of service and endeavors.





DEVELOPMENT MANAGEMENT AWARD

The Asian Management Awards, Asia's most rigorous examination of corporate and organizational excellence, is a tribute to organizations that create the future. The annual Awards, which is presented in five categories, is conducted by the Asian Institute of Management (AIM) and the *Far Eastern Economic Review* in partnership with leading Asian organizations.

The Development Management Award recognizes AIT's role in human resources development by providing advanced education and research in technology, science and management, and its contribution to technological change and sustainable development in the Asia-Pacific region through its alumni.

The Awards also noted the critical tasks undertaken by AIT for its host country, Thailand, particularly in the areas of infrastructure development, human settlements and environmental management. It described AIT and the other winners as trail blazers. They blaze the trail for all of us, AIM pointed out, and by their example, they will teach young Asian managers the right way of doing things. They are quality-oriented, market-driven, change-ready, and innovative.

President North received the Award for Development Management from H.E. Mr. Amnuay Virawan, Deputy Prime Minister of Thailand.



PRESIDENT'S MESSAGE

It is with some sadness and nostalgia that I pen this message, my 13th and last for the *AIT Annual Report*.

Each year I have recorded steady growth and measures of success, but the jubilation is muted by ever-growing concern for the long term sustainability of the Institute. As the search for a new President progressed through 1995, I have had to reflect on what sort of an Institute will be handed to my successor's leadership, taking into account the problems that we have overcome and the difficulties that we face.



Various infrastructural developments provide an indication of growth under Prof. North's Presidency. Above is a panoramic view of a new "academic avenue" on the north side of the campus, stretching from the Chalerm Prakit Building to the Outreach Building. Other new structures on this avenue and its immediate surroundings are academic buildings for agricultural and food engineering, aquaculture, biotechnology, telecommunications, computer science and energy technology, and an extension of the water resources engineering laboratory.

Opposite page:

Campus pictures, from top:

Further improvements are underway, including rebuilding of the perimeter dyke and klong after the flooding.

A 100-rai plot at the southwest corner of the campus has been allocated for the new technology park in which AIT is partnering Thammasat University and the Ministry of Science, Technology and the Environment.

New campus facilities include the golf club house.

Bottom picture:

President North with Vice Presidents Prof. Ricardo P. Pama (Academic Affairs) and Prof. Pisidhi Karasudhi (Development).

Campus Development

I had hoped that 1995 would see the completion of certain physical campus developments. I should have liked to pass on to my successor a clean campus, uncluttered by building work and with its lease renewed to 2031. While we completed construction of our biotechnology building and commenced work on major faculty and staff housing, which consists of some 90 apartments to be opened in early 1996, we are in the early stages of planning for a new building for the proposed pulp and paper technology program and the construction of a wind tunnel. This means that construction activities will continue into the next Presidency, as must negotiations for our lease agreement with the Ministry of Finance in the Royal Thai Government. This said, however, 1995 did see considerable improvements in the appearance of our campus, with particular attention paid to the care of its flora and fauna and the introduction of control measures concerning entry procedures and parking facilities for motor vehicles.

Strategic Planning

A healthy university must undergo continuing academic development. 1995 saw our four Schools preparing themselves for the next century. Each School has spent considerable time in constructing its own strategic plan for the next five years. The individual school plans have been integrated into an Institute-wide plan that addresses our overall mission and objectives as well as our policies for sustainability (to which I made reference in my message to the 1994 Annual Report).

Academic Developments

In the academic arena in 1995, new programs in bioprocess technology, infrastructure planning and management and urban environmental management took off. Total student enrolment in the degree programs was maintained at over 1000. Sponsorship commitment for a new program in environmentally sustainable pulp and paper technology has been secured and support for on-going programs has been assured.

Flood Protection

The most exciting campus event of 1995 was undoubtedly the flooding of Pathum Thani Province in October. To the west and north of our campus, the flood rose to a depth of almost two meters. Unknown to us, part of the flood protection bund had subsided over the past twenty years - in one place by more than one meter relative to mean sea level. We had to work day and night to strengthen our protection as the waters lapped within inches of the top of the bund. We had to raise the level of the water in our internal drainage system, too, so as to reduce pressure on the uncompacted components of the bund. Fortunately, we escaped with only a relatively minor flow onto the golf course, which served a new purpose as water catchment area. This was drained within 48 hours so that damage was minimized. A program to rebuild the bund above its 1973 specification is underway.



Financial Front

On the financial front, the Institute again completed the fiscal year in balance, although the increasing proportion of the unrestricted cash operating budget which is devoted to salaries continues to give cause for concern. A significant factor in this is the decreasing faculty secondment, alongside increases in the number of directly hired faculty, so as to maintain the faculty to student numbers increase. This point will require serious attention in the years ahead, particularly as directly hired faculty are requesting higher salaries and lower faculty to student ratios.

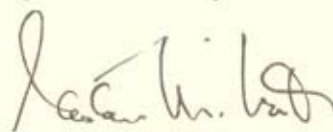


In 1995 the Institute received an unusually large number of evaluation missions monitoring the grants of several large donors. The very constructive assistance of these missions is always appreciated, but they do place an administrative load on the Institute. We are trying to introduce broader coordination and collaboration with the donor community, concentrating on the Nordic countries where this effort seems most likely to succeed.



As always, this year's *Annual Report* gives details of the academic and financial position of the Institute, as well as of student and personnel statistics. The increasing numbers of externally and self-supported students are a positive sign of future sustainability, while our expanding geographic coverage reflects the regional service of the Institute.

The Institute's future will never be easy, but will, I am sure, be one of continuing progress and successful service. For this I want to express my deepest appreciation of the efforts of my colleagues in the Institute, as well as of the trustees, alumni, donors and many other supporters. I wish you all great success in the years ahead.


Alastair North

NEW AIMS, NEW CHALLENGES

Farewell remarks of President Alastair North

(Excerpted from "A Personal View of 13 Years of Service", Report of the President to the Board of Trustees' meeting on 25 January 1996)



President North led the AIT community in welcoming H. E. Mr. Chuan Leekpai, Prime Minister of Thailand, when he visited the AIT campus on 27 January 1995.

"... AIT is the fourth university in which I have held a Faculty position. Yet it has given me the most rewarding as well as the most demanding years of my career. Of course, it is the most senior of the four positions I have held, but that alone is not the whole story. AIT is truly 'great' in all the meanings that this word carries when applied to institutions. The mission of the Institute is more noble, more clear (I have in the past called it more 'singular') than that of any other university I know. This sense of purpose and mission binds everyone in AIT to a common resolve, regardless of their personal differences and the diverse directions in which they might want to develop their work. Everybody who contributes to AIT becomes enriched, leaving the Institute more respecting of other nationalities, more understanding of the real purpose of education, more sympathetic and tolerant... Students, staff and faculty all share this experience. In AIT as elsewhere in life, the more one puts in, the more one gets out. The chief executive officer is asked to put the most into running the Institute and, I assure the Board, gets the most out.

"For this I am eternally indebted to the Board of Trustees, who contacted me in 1982, appointed me in 1983, and who have supported me through all circumstances ever since. (The circumstances have not always been easy.) The word 'support' is inadequate to cover the wise advice, the personal friendship, the right word at the right time (given in a personal capacity), combined with the financial help and the promotional assistance which have marked the relationship between the Board and myself over the years.

"While I have formed friendships of differing degrees with all Trustees, I do want to make special reference to my deep gratitude to the Chairperson and the Vice Chairperson of the Board.

"...Over 13 years I have worked with five Vice Presidents for Academic Affairs, three Vice Presidents for Development and one Vice President for Administration. They have served the Institute well, supporting myself as President and creating friendships that will outlast our tenure in AIT. However, only one has been a Vice President for the whole period, Prof. Ricardo Pama. I am sure that Ric Pama will go down in history as one of the most successful Vice Presidents for Development. He lifted the Institute from the aftermath of financial collapse (1975) to the level of donor support that enabled the steady growth through my Presidency.

"...No President can operate without the support of the students, faculty and staff of the Institute...To the seven faculty representatives and three staff representatives, to the golf club captain, to 19 Student Union presidents and to the faculty and staff whom I have come to know on a personal basis, my thanks for making my stay at AIT one of happiness and reward.

"Members of the Board of Trustees, for the 13 most wonderful years of my professional life, I thank you all."

"Mr. Chairman, Trustees:

"Please allow me to say a few words of valediction.

"This year marks my 26th year of service to the Institute. I came to AIT to serve and I gave her my best. I dedicated the most productive years of my life to the welfare of AIT serving for eight years as Faculty member, 14 years in fund raising as Vice President for Development and four years of academic administration as Vice President for Academic Affairs. I have served three Chairpersons of the Board: three years under Dr. Puey Ungphakorn, two years under Dr. Oscar Mapua and 21 years under Dr. Thanat Khoman.

"I served four Presidents: four years with Dr. Milton Bender, two years with Dr. Harold Hoelscher, seven years with Dr. Robert Banks and 13 years with Prof. Alastair North.

"In the history of the Institute, no other alumnus has been given so much opportunity to serve AIT. I thank you all for giving me your trust and confidence for so long a time. I cannot ask for more!

"Building a great institution is like constructing a pyramid. Each stone must be properly positioned in place so that another stone can be placed on top. I shall leave AIT replete with the thought that I have added my piece of stone to the AIT pyramid. Let others who desire to serve AIT come forward and add their piece of stone.

"All these years, I have preached to AIT students the gospel of serving their respective countries. I, too, must follow what I preach. On 30 June 1996, after 26 years of service to the Institute, I shall be returning to the Philippines to serve my country with whatever is left of my productive years.

"May I wish you all the best in the years ahead! May AIT, which we all love dearly, continue to prosper and retain its reputation as being one of the best post-graduate institutes in the Asia-Pacific region into the 21st century.

"May God bless you all and goodbye!

**Farewell Remarks of
Vice President
Ricardo P. Pama**

(Full text of the VPAA's farewell remarks to the Board of Trustees' meeting on 25 January 1996)



"In the history of the Institute, no other alumnus has been given so much opportunity to serve AIT," says Prof. Pama, here photographed with AIT alumni, Mr. Wisit Charernnit (CRD '65) and Mr. Chainarong Na Lampoon (WRE '80).

Ricardo P. Pama

ACADEMIC AFFAIRS

Emphasis was placed on the formulation and implementation of new policies and arrangements in respect of faculty, curricula, and academic developments.

Restructuring activities and strategic planning exercises were carried out in support of curricular change and the expansion of outreach activities.

Participation in Decision-making

Created under the Institute's new committee structure, the School and Center fora enable individual academic units to conduct rigorous self-examination through strategic planning exercises. These exercises are carried out within the bounds of the Institute's mission. They address such issues as academic programs, research and outreach activities, finance, facilities and equipment, and student affairs. Inputs from the School and Center fora in 1995 have been incorporated in the Institute's first Strategic Plan (1996-2000).

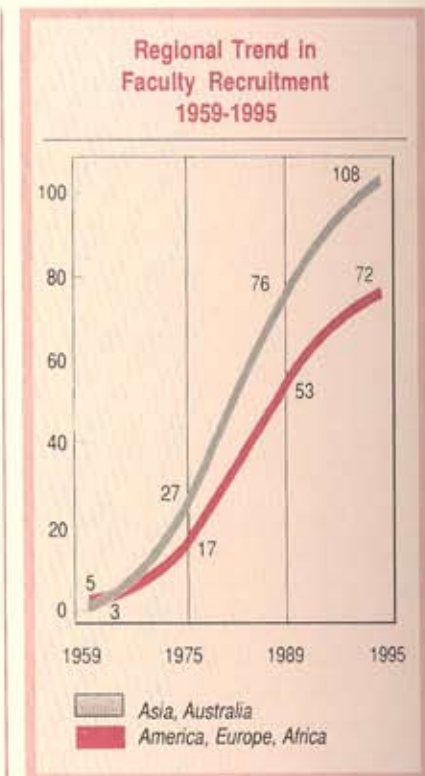
FACULTY

The Institute's Faculty profile underwent dramatic changes not only in terms of composition, but more importantly in the areas of professional development, faculty audit, promotion, and participation in decision-making.

Professional Development and Academic Quality Audit

Opportunities for upgrading activities were placed at the service of faculty members. In the main, these came in the form of annual faculty development workshops. In addition to their professional value, upgrading activities foster personal interactions among faculty members and enhance the international character of the AIT community.

The workshops led to the establishment of Academic Quality Audit Teams or AQAT in individual Schools. With the support of the Center for Language and Educational Technology or CLET, the teams were set up to conduct regular reviews of teaching methods and the means by which they are evaluated. The first such audit was launched in 1995.



Guidelines for Promotion and Incentive Schemes

Faculty recognition through promotion is spelt out in the newly formulated criteria for awarding academic ranks. In addition to teaching and publishing activities, other major considerations for promotion are faculty participation in research and outreach activities and service provided to the School and/or the Institute. These guidelines have been adopted by the Faculty Appointments and Promotions Panel.

A revised scheme for the distribution of income from research, taking into account overheads and faculty time costs, is now being implemented.

A related development is the introduction of individual terms of reference, which enable faculty members to develop variable profiles of activities that would allow them to devote more time for outreach activities, while maintaining a minimum load of teaching and student supervision.

Average Faculty Strength

	1993	1994	1995
Full time Chair Professor		0.33	3.33
Professor	30.67	31.33	31.67
Associate Professor	47.66	47.66	49.33
Assistant Professor	33.00	28.33	34.00
Instructor	1.67	1.33	0.33
Long-term Visiting Faculty	10.34	13.33	14.67
	123.34	122.31	133.33
Part time Short-term Visiting Faculty	10.66	7.00	6.67
Associated Faculty	34.00	30.00	26.00
Affiliated Faculty	20.00	17.34	14.67
	64.66	54.34	47.34

Faculty Publications

	1991	1992	1993	1994	1995
Journal Papers	209	196	198	144	181
Conference Papers/Proceedings	312	269	258	300	255
Research Reports	11	25	28	30	43
Books/Chapters in Books	25	28	28	21	19
Others*	99	172	125	208	104
	656	690	637	703	602

*Monographs, working papers, consultancy reports, reviews, occasional papers, newsletters, reference materials, course handbooks, lecture notes, etc.

Recruitment and Composition

The position of Chair Professor was introduced to the faculty ranks. Recruitment of direct-hire faculty was increased, while that of part-time faculty was reduced.

Stringent recruitment procedures were adopted to ensure the quality of incoming faculty. As a means of assessing their teaching and communications skills, short-listed candidates for faculty positions are now required to conduct seminar and workshop presentations in their areas of expertise. Faculty positions are advertised internationally.

To facilitate the integration of incoming faculty, an orientation program, including briefing sessions and the provision of latest information on matters of

personal and professional interest, was developed.

Full-time faculty strength in 1995 increased by 8% over 1993, due mainly to rising student enrolment in SOM and in the newly-established fields of study in electric power systems management, bioprocess technology, information management, infrastructure planning and management, and environmental remote sensing and geo-information for development.

Of the total number of faculty, seconded faculty accounted for 35%, down from 40% in 1994. The Institute's target faculty composition is 50% direct-hire and 50% seconded.

Outreach Activities

The volume of published works in international refereed journals and conference proceedings maintained a healthy trend over the past few years. The increase in the number of research reports was partly influenced by opportunities extended by the Institute for greater faculty participation in outreach activities.

Although fewer in number, research projects conducted in 1995 yielded a revenue of 220 million Baht, the Institute's largest research income to-date. The 1995 income marks a 175% increase from the 1991-92 research revenue of 80 million Baht.

The number of continuing education activities organized by the Schools and academic Centers (including conferences, workshops, seminars, short courses and special lectures) remained at high levels. The Institute's income from training courses conducted by various units increased from 87 million Baht in 1992 to 109 million Baht in 1995, an increase of 25%.

ACADEMIC DEVELOPMENTS

New Programs

Planning for a new program in pulp and paper technology gained further momentum in 1995. The program is expected to offer two fields of study, namely pulping technology and paper and board technology. A curriculum will be developed in collaboration with the University of Helsinki, the Royal Institute of Technology in Stockholm, the Technical University of Norway, and the Institute of Science and Technology at the University of Manchester, UK.

Also being planned is the introduction of genetic engineering, initially as an integral part of the bioprocess technology program.

Information Dissemination

With further attention given to information dissemination, comprehensive information on AIT has been made available on the Internet. AIT launched a site on the World Wide Web to reach student applicants as well as potential collaborating partners for research and outreach activities. The URL for the AIT home page is <http://www.ait.ac.th/>

The AIT home page features major Institute publications, as well as a request form for admission. Student applicants from Thailand, India, the Philippines, Indonesia, and Pakistan have tapped this on-line assistance.



New Specialized Centers

The GIS Application Center funded by UNEP/EAP-AP was established in September 1995, as a part of SERD. The center conducts training in GIS (geographic information systems) technology and applications and also provides consultancy services.

Also based at SERD is the Center for Gender and Development Studies, which provides a resource to promote and develop the gender dimension across the fields of study offered at AIT. The Center carries out activities in support of a worldwide trend for the integration of gender issues in technological development and natural resource management.

The Center for Library and Information Resources (formerly the Library and Regional Documentation Center) has revitalized library operations, as well as the services offered by its four specialized information centers.

On-line access to databases is made



possible through INNOPAC, a state-of-the-art system purchased in 1995. CLAIR's on-line public access catalog contains bibliographic information on all resources acquired after 1971.

The Center for Language and Educational Technology broadened its range of activities with the introduction of the Academic Support Network for students requiring assistance in mathematics, statistics, economics and computer literacy. The ASN is intended for students from countries where the standard of undergraduate education is not at par with AIT's traditional student-sending countries.

Other Ventures

A new program of cooperation was reached with the Worldwide Fund for Nature (WWF), leading to the secondment of WWF staff to carry out teaching and program activities in SERD. A similar program was signed with the International Union for the Conservation of Nature (IUCN).

UNEP/EAP-AP will setup a satellite ground station on campus to support worldwide networking activities.

Top photos, left: The Academic Support Network provides assistance in mathematics, statistics, economics and computer literacy. Right: Seconded staff from the Worldwide Fund for Nature carry out teaching and program activities for SERD students.

Left: Information concerning AIT's admission requirements can be accessed through the Internet.

STUDENTS

Enrolment

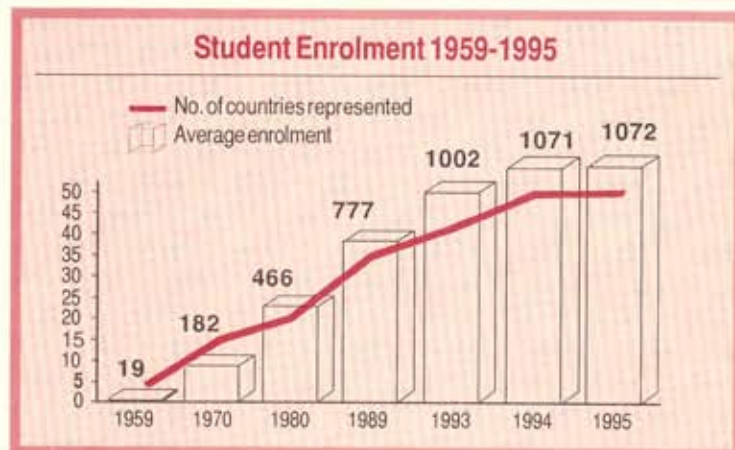
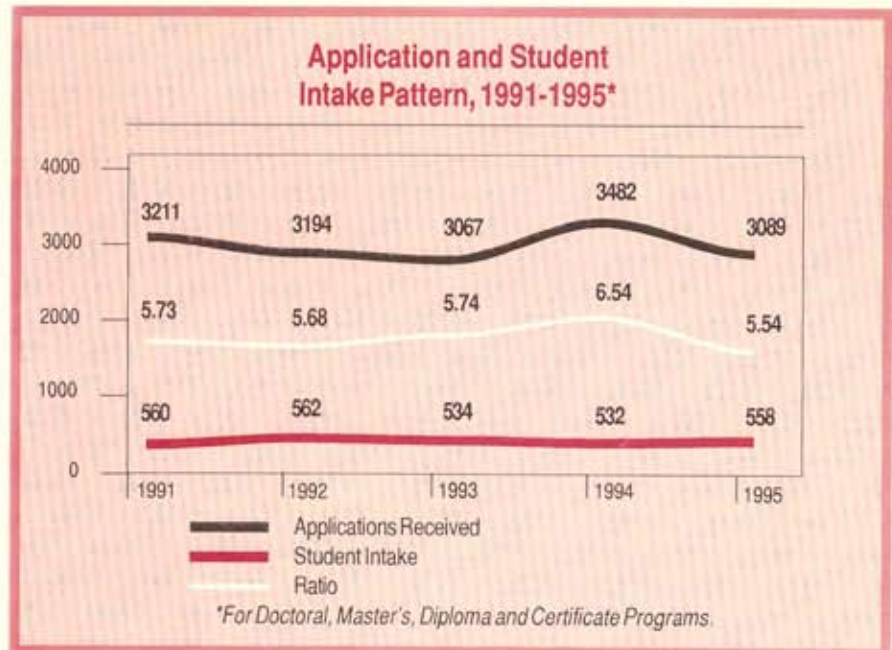
Total enrolment over the past few years followed an upward trend, with full time enrolment in the degree-awarding programs reaching an annual average of 1014 in 1994. Enrolment figures in the Academic Centers (including the Talkbase and Bridging Programs, and programs in remote sensing and computer applications development) were generally on the rise.

The 1995 Doctoral enrolment, which accounted for 17% of total enrolment, marked a 42% increase from 1992. Female student numbers also rose, now accounting for 26% of total enrolment.

Of the four Schools, SOM showed consistent growth in enrolment. This contrasted with declining student intakes since 1991 in the human settlements development and natural resources programs, due mainly to reductions in internal scholarship grants from traditional donors, diminishing appeal of the programs to prospective students, and lack of targeted marketing efforts.



Exchange programs and active student recruitment campaigns have contributed to an upward trend in student enrolment over the years.



Fee-Paying Students and Students on Partial Scholarships

The number of students on the partial scholarship scheme, which was put into effect in May 1993, continued to rise. In 1995, 106 students were enrolled under this scheme, up from 47 in 1994, with the two largest groups coming from Thailand (78) and PRC (39).

The number of self-supporting students was significantly up at 183 during the September 1995 term, compared with 30 during the same period in 1992.

Further increases in the number of fee-paying students and students on partial scholarships should help offset the decline in internal scholarship support.

Individual Study Plan

The individual study plan enables students and their respective advisors to work out ideal course combinations and to select research topics suited to the academic and professional needs of individual students. At the School level, field-focused remedial courses are offered on request.

Related to the individual study plan is the student:faculty ratio, the desired optimum level being 9:1. The current average ratio ranges from 8:1 to 9:1.

International Student Body

Over the years, the AIT student body has become truly international. The Institute admitted students from Bolivia and Brazil in 1992; Luxembourg, Spain, Tonga and Vanuatu in 1993; and Austria and Nigeria in 1994. In 1995 Botswana, Kazakhstan, and Sierra Leone joined the league of student-sending countries.

An interesting trend over the past four years is the increasing number of students from less developed countries in Asia and other regions.



AIT students dressed in their national costumes give a regional color to Institute events. Above and on the opposite page, students from Indonesia, Myanmar, Philippines, Vietnam, Thailand, and PRC don traditional attires from their respective countries.

1995 Student Enrolment

Term	Schools	Centers*
Jan	1024	70
May	984	39
Sept	1022	77
Average	1010	62

* Including Talkbase and Bridging Programs and courses in remote sensing and PCAD (Program in Computer Applications Development).

1995 Master's and Doctoral Enrolment (Average)

Doctoral		Master's	
D.Eng.	73	M.Eng.	429
D.Tech.Sc.	50	M.Sc.	224
Ph.D.	38	MBA	135
Total*	161		788

* Of the total number of 949 degree students, 17% are enrolled in the Doctoral program.

ACADEMIC AFFAIRS



Through social, cultural and sports activities, the AIT Student Union conducts a variety of enrichment programs on- and off-campus. While fostering lifelong friendships among students from diverse cultures, these programs also encourage national traditions to flourish. At the AIT campus, the charms of an international student body are multiple, the images diverse. Always, the students' traditional costumes lend a festive air to occasions, such as the AIT Fair.

1995 Student Enrolment by Country

	Jan	May	Sept		Jan	May	Sept
Bangladesh	84	71	96	Mongolia	4	4	5
Belgium	1	1		Myanmar	26	28	29
Bhutan	21	5	10	Nepal	76	81	81
Bolivia	1	1	1	Netherlands	1	1	2
Botswana	1			Nigeria	1	1	
Cambodia	38	25	24	Norway			3
Canada	2			Pakistan	52	34	41
Chinese Taipei	41	26	38	PNG	1	1	0
Denmark	1		1	Philippines	42	46	42
Finland	1	3	2	PRC	81	76	81
France	1	1	7	Sierra Leone			1
Germany	1	3	3	Spain			2
Hong Kong	2			Sri Lanka	44	41	45
India	55	55	56	Sweden	1	1	1
Indonesia	62	42	38	Switzerland	1	1	1
Japan	2	2	2	Tanzania		5	
Kazakhstan	1	2	2	Thailand	263	288	315
Kenya	2	2	2	USA	4	2	1
RoK	12	12	7	Vietnam	121	121	109
Laos	14	18	17				
Malaysia	7	6	14	Total*	1070	1008	1081
Maldives	2	2	2				

*Not including Pre-Master's English Program.

1995 Student Enrolment by School

	Jan	May	Sept
School of Advanced Technologies			
CS	58	93	82
ISE	47	89	84
IM		9	8
TC	30	61	61
School of Civil Engineering			
GTE	89	46	88
IEM	15	16	23
SEC	85	47	99
WRE	32	30	47
School of Environment, Resources and Development			
AFE	126	129	82
ET	71	70	45
EE	109	104	62
HSD	94	93	58
NR	58	57	39
School of Management			
	151	100	192
Others*			
PCAD	40	14	46
Remote Sensing		1	
Pre-Master's English	24	15	18
Bridging Program	6	9	13
Total	1094	1023	1099

*Special Program and Certificate students.

GRADUATION



The Institute awarded degrees to 486 students in 1995.

Between 1991 and 1995, the majority of graduation award recipients were from Vietnam (12), Philippines (11), Sri Lanka (10), Nepal (10), India (9) and Thailand (6).



1995 GRADUATION RECORD

by Degree

	Apr	Aug	Dec	Total
D. Eng.	5	2	7	14
D.Tech.Sc.	1	1	1	3
Ph.D.	1	4	2	7
M.Eng.	74	75	78	227
M.Sc.	8	113	24	145
MBA	73	4	7	84
Dip.AIT			6	6

by Program

	Apr	Aug	Dec	Total
School of Advanced Technologies				
CS	1	7	34	42
ISE		3	36	39
TC			27	27
School of Civil Engineering				
GTE	43	1	3	47
IREM	1			1
SEC	39	2	1	42
WRE	2			2
School of Environment, Resources and Development				
AFE	1	46	4	51
EE		45	7	52
ET		30	2	32
HSD	1	43	3	47
NR	1	18	1	20
School of Management 73 4 7 84				

by Country

	Apr	Aug	Dec	Total
Bangladesh	7	21	10	38
Bhutan			1	1
Bolivia			1	1
Cambodia	1	3		4
Chinese Taipei	17	1	6	24
France			1	1
Germany		1		1
Hong Kong	2			2
India	6	14	8	28
Indonesia	9	11	8	28
Japan		1		1
RoK	1	5		6
Laos			1	1
Myanmar	1	6	4	11
Mongolia			3	3
Malaysia	4	1		5
Nepal	8	21	10	39
Nigeria		1		1
Netherlands			1	1
Philippines	4	11	7	22
Pakistan	17	8	4	29
PRC	8	23	9	40
Sri Lanka	9	5	6	20
Sweden	1			1
Thailand	36	42	31	109
USA	1	1		2
Vietnam	30	23	14	67

GRADUATION AWARDS

April

Mr. Achmad Wicaksono
(SCE, GTE) Indonesia
BARBARA AND

JOHN HUGH JONES PRIZE

Presented by former AIT Vice President for Academic Affairs, Prof. John Hugh Jones, and his wife, Barbara.

Mr. Lee Cheol-Ju
(SCE, GTE) Republic of Korea
CHIN FUNG KEE PRIZE

Established in memory of the late Prof. Chin Fung Kee, former Vice-Chancellor, University of Malaya, and past President of the Southeast Asian Geotechnical Society.

Mr. Ha Ngoc-Linh
(SOM, MOT) Vietnam
HAIDER RAZVI PRIZE

Awarded from funds provided by Mr. Syed Mushtaq Haider Razvi, Charge d'Affaires, Embassy of the Islamic Republic of Pakistan and Permanent Representative of Pakistan to the United Nations Economic and Social Commission for Asia and the Pacific.

Mr. Nguyen Nguyen Minh
(SCE, SEC) Vietnam
MAHESH VARMA PRIZE

Established from funds provided by Prof. Mahesh Varma, former AIT faculty member.

Mr. Nguyen Le Tin
(SOM, IB) Vietnam
SAV PRIZE

Awarded to the best student from the Swiss-AIT Vietnam Management Development Program in Ho Chi Minh City.

Miss Gloria P. Gerilla
(SCE, GTE) Philippines
YOHEI MIMURA PRIZE*

August

Mr. Ramji Prasad Neupane
(SERD, AFE) Nepal
HISAMATSU PRIZE

Presented by Prof. Yoshihiro Hisamatsu, former Dean of the Faculty of Engineering, University of Tokyo, and Technology Adviser for Nisshin Steel Co. Ltd., Japan.

Mr. Donald M. Ugsang
(SERD, NR) Philippines
JAMES A. LINEN III
MEMORIAL PRIZE**

Mr. Oliver Vilar Alvear
(SERD, EE) Philippines
ROBERT B. BANKS PRIZE

Presented by former President, Prof. Robert B. Banks.

Mr. Aung Naing Oo
(SERD, ET) Myanmar
SUKUM NAVAPAN PRIZE

Presented by AIT Trustee Dr. Sukhum Navapan.

Miss Letecia N. Damole
(SERD, HSD) Philippines
AKIO MORITA PRIZE*
and **TIM KENDALL**
MEMORIAL PRIZE***

Mr. Satya Priya
(SERD, AFE) India
Y. Y. KISHIDA PRIZE

Established by Mr. Yoshisuke Kishida, owner of Shin Norinsha Co., Tokyo, in memory of his son, Yoshiyuke, and awarded to the best student in the agricultural machinery and management field of study.

December

Mr. Huynh Trung Luong
(SAT, ISE) Vietnam
JAMES A. LINEN III
MEMORIAL PRIZE**

Mr. Surin Kittitornkun
(SAT, TC) Thailand
TELECOM-FINLAND PRIZE

Funded by Telecom Finland and awarded to the most outstanding graduate in the Telecommunications Master's program.

Mrs. Wang Ning
(SAT, ISE) People's Republic of China
SHOICHIRO TOYODA PRIZE*

Mr. Cao Hoang Tru
(SAT, CS) Vietnam
TIM KENDALL
MEMORIAL PRIZE***

* Awarded by KEIDANREN in recognition of the best academic performance among female students in the graduating class.

** Established in 1988 in memory of the late Mr. James A. Linen, a Charter Founding Member and Life Member of the Board of Trustees.

*** Established in memory of the late AIT Trustee Mr. R.M. Kendall.

N.B. Shown in parentheses are the recipients' respective Schools and fields of study.

PARTNERSHIPS AND COLLABORATIONS

ACHIEVEMENTS

RENEWAL OF GRANTS

Collaborations were renewed in FY 1994-1995 with partner governments (Belgium, Chinese Taipei, France, Germany, Japan, Netherlands, New Zealand, Philippines, PRC, RoK, Spain, Sweden, and Thailand) and donors from other sectors.

Long-term Renewals

Of the major long-term renewals, the largest was signed with Thailand (total value: US\$ 12,060,000 for 1995-99), followed by Germany (estimated value: US\$4 million for 1995-97).

Annual Renewals

Annual renewals were signed with Japan for FY 1994-95 (estimated value: US\$3,669,000) and for FY 1995-96 (estimated value: US\$5,688,000). A unique feature of both renewals is a special support program for Vietnamese teaching staff, valued at US\$210,000 (FY 1994-95) and US\$230,000 (FY 1995-96).

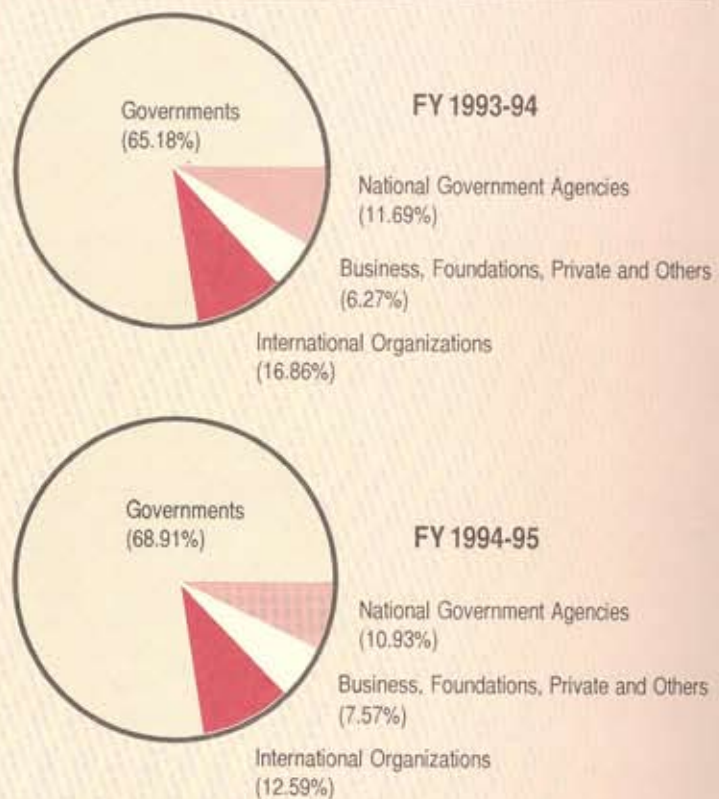
NEW COLLABORATIONS

Private Sector

In Thailand, the largest new private sector collaboration was signed in September 1994 with Finance One Public Co., Ltd. and the John F. Kennedy Foundation of Thailand, in support of a Chair Professorship in Bioprocess Technology (total value: US\$192,000).

Abroad, AESOP GmbH, a software company in Stuttgart, Germany, provided software support for teaching activities in industrial systems engineering. The Overseas Construction Association of Japan, Inc. provided scholarships.

Total Contributions Received By Sector



Institutional Collaborations

Collaborations covering staff and information exchange, training, workshops, curricular development and research, were signed with institutions in Kazakhstan, Uzbekistan, and Kyrgyz. These institutions are as follows: the Almaty Power Engineering Institute in Kazakhstan, Executive Council of the Interstate Council of the Republics of Kazakhstan and Uzbekistan, and the Ministry of Education and Science of the Republic of Kyrgyz.

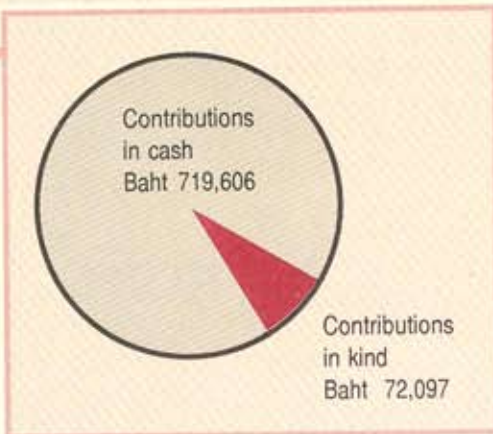
Similar collaborations were signed with the Ministry of Education and Science and the Mongolian Technical University in Mongolia, and, in the ASEAN region, with the Universiti Sains Malaysia.

The Independent University of Bangladesh and the French Government (through its Embassy in Bangladesh) signed a three-year cooperation program (1995-97) to help develop the IUB Business Program through teaching and monitoring, and to support HRD through training and executive development programs.

PARTNERSHIPS AND COLLABORATIONS

Total Contributions Received FY 1994-95 ('000)

	Cash	Kind
Scholarships	274,502	
Research Projects	220,094	
Continuing Education	109,104	
Capital Grant	10,000	
Equipment and Books	13,905	8,504
Endowment Fund	1,571	
Operating Grant	48,743	
Faculty/Staff Secondment	40,787	63,593
Local Currency Grant	900	
<i>Sub-total</i>	719,606	72,097
Total		791,703



Faculty and Staff Secondments FY 1994-95

Country/Organization	ManMonths
<i>Governments</i>	
Australia	4.0
Canada	30.0
People's Republic of China	18.0
Chinese Taipei	12.0
Finland	42.0
India	13.5
Japan	149.0
Korea	33.0
Norway	24.0
Sweden	24.0
Switzerland	25.5
USA	20.0
<i>European Economic Community</i>	
CEC	24.5
Belgium	38.0
Denmark	46.5
France	111.0
Germany	65.0
United Kingdom	67.0
<i>International Organizations</i>	
ESA	35.0
IUCN	12.0
UNEP/GRID	12.0
WWF	10.0
<i>Business, Industry and Others</i>	
	24.0
TOTAL	840.0

COLLABORATIONS IN INDOCHINA

Cambodia

Memoranda of understanding were signed in mid-1995 with the Ministry of Education, Youth and Sport, the Ministry of Foreign Affairs and International Cooperation, the Fisheries Department, and the Royal University of Agriculture. The latter two MOUs were signed with AIT's aquaculture outreach program.

Laos

MOUs were signed with the Laotian Government to support nine Master's scholarships annually for the period FY 1995-96 to FY 1997-98.

Vietnam

A proposal was submitted to Finnida* for further support to AITCV for 1996-1999. Another proposal was submitted to EC. Planning for the development of the AITCV Thach That campus, which is provided by the Vietnamese Government, is continuing.

*Department for International Development Cooperation under the Ministry for Foreign Affairs, Finland.

REVIEW OF EXISTING MOUs

AIT-DANIDA PROGRAM

Two major reviews were fielded in the second half of 1995. The first of these evaluated the integrated pest management project, while the second reviewed the overall achievements of the AIT-Danida Program, taking into account curricular and administrative changes resulting from the Institute's organizational restructuring in 1993. Of the total grant of US\$12 million for the period 1994-1999, US\$1.8 million (excluding long-term faculty and advisers' secondments) were drawn as of December 1995.

To better address Danida's objectives and strategies vis-a-vis AIT's strategic plan, the review missions proposed closer tie-up among Danida-supported projects in the region and potential participation by AIT's outreach centers (i.e. the Asian Disaster Preparedness Center and the Continuing Education Center) in HRD activities for Danida project staff/counterparts in the region.

AIT-SIDA PROGRAM

Implementation of the six program components in the AIT-Sida program proceeded smoothly. Sida extended its support to cover FY 1995-96 (estimated value: US\$ 2,412,500).

Research and teaching are intricately interwoven in the Danida and Sida support programs for collaborative activities, which are aimed at furthering knowledge and improving the quality of life for everyone. As a priority goal, these activities focus on ensuring sustainable agriculture and natural resource use.

PROSPECTS

PENDING PROPOSALS AND PROSPECTIVE RENEWALS

The largest prospective renewal is with Finnida in support of a proposed program in pulp and paper technology, the AITCV and other components activities.

The Institute is awaiting the results of proposed annual renewals with Japan, France, and Norway, and long-term renewals with Austria, Canada, China, India, Indonesia, New Zealand, and Switzerland.

In Thailand, proposals have been submitted to the Royal Thai Government and to several Thai state enterprises. A number of renewals with the private sector are also expected.

In Indonesia, collaborations are being explored with four different institutions, principal of these being the Directorate General of Higher Education.

OTHER PROSPECTS

It is hoped that a proposed collaboration with the Azerbaijan National Aerospace Agency (ANASA) in Azerbaijan would help pave the way for AIT activities in other countries in Central Asia.

Elsewhere, the Institute is awaiting the results of proposed collaborations with the National Council of Science and Technology (CONCYTEC) of Peru and the Universiti Teknologi Malaysia. Under these collaborations, AIT and the partner agencies will enlist unilateral, bilateral and/or multilateral agency-funding support for a range of joint activities.



OUTREACH ACTIVITIES

AIT CENTER IN VIETNAM

In April 1995, AITCV opened a post-graduate Diploma program in industrial systems engineering, with initial funding from the Government of Belgium. Recruitment of students for the second ISE program was launched in October 1995. Under study are long-term academic programs in the following areas: agriculture, environment, urban and rural planning, and energy technology.

AITCV policies and programs are reviewed and evaluated by a Council of Advisors, which is made up of senior officials from AIT, the Ministry of Education and Training (MOET), donor organizations and related institutions.

AIT's continuing education programs cover a wide range of topics and provide practising professionals with new knowledge while upgrading their skills. In its ten years, the Asian Disaster Preparedness Center has gained recognition among countries in the region and elsewhere. Like the Continuing Education Center, it is exploring new ways to expand course delivery.



ASIAN DISASTER PREPAREDNESS CENTER

A recently formulated strategic plan refocuses and clarifies ADPC's core activities, while also restructuring internal operations and reinforcing the Center's commitment to assist Asian and Pacific communities in developing their capabilities and implementing national policies.

Under the Directorship of Mr. John Barrett since 1 March 1995, ADPC is pursuing vigorous institutional strengthening and resource generation efforts. A team management approach has been adopted and self-supporting cost centers created, with each cost center manager given responsibility for budgeting, income generation, related reporting, and product delivery.

ADPC will collaborate with Swinburne University of Melbourne in developing a distance learning program, which is scheduled to commence in early 1996. The program will provide graduate Certificate and graduate Diploma courses in emergency and disaster management through self-study module, in addition to on-campus and in-country training activities.



CONTINUING EDUCATION CENTER

Collaborations with international partners continue to be the prime target of CEC's program development strategy. Among these are the development of a distance learning program, to be offered jointly with Deakin University of Australia.

Also being developed is a professional development project at post graduate diploma level, to be offered jointly with Phnom Penh University and SERD.

In 1995 off-campus programs were held in Hanoi with AITCV, in Phnom Penh under the sponsorship of Sida, and in Bhutan under the sponsorship of Danida. The Bhutan program focused on environmental management and related policies, while the Phnom Penh workshop dealt with the management and capacity-building of universities.

Marketing efforts in Thailand and abroad were carried out through direct contacts with potential clients and donors.



SUMMARY OF CONTRIBUTIONS (CASH AND KIND) FY 1994-95

GOVERNMENTS

Australia	0.18
Brunei	0.13
Canada	0.85
People's Republic of China	0.58
Chinese Taipei	1.53
Finland	2.53
India	0.17
Japan	9.18
Republic of Korea	0.34
Malaysia	0.17
New Zealand	0.32
Norway	3.78
Pakistan	0.10
Spain	0.36
Sri Lanka	0.01
Sweden	6.77
Switzerland	1.76
Thailand	9.32
United States of America	4.66
European Community	
CEC	8.56
Belgium	0.85
Denmark	3.89
France	3.48
Germany	6.60
Netherlands	0.05
United Kingdom	2.73
<i>Sub-total</i>	68.91

INTERNATIONAL ORGANIZATIONS

ADB	3.44
Commonwealth Secretariat	0.16
ESCAP	0.34
ESA	0.39
FAO	0.14
ICIMOD	0.10
ILO	0.13
IUCN	0.29
Mekong River Commission Secretariat	0.01
SEAMES	0.28
UN	0.89
UN University	0.19
UNEP	3.75
UNCHS	0.67
UNDP	1.33
UNESCO	0.04
UNICEF	0.01
UNIDO	0.01
WHO	0.24
World Bank	0.10
WWF	0.08
<i>Sub-total</i>	12.59

NATIONAL GOVERNMENT AGENCIES

<i>Austria</i>		
International Atomic Energy Agency	0.01	
<i>Bangladesh</i>		
Crop Diversification Program	0.01	
Election Commission Secretariat	0.08	
Financial Assistance Support Unit	0.02	
Financial Sector Reform Project	0.02	
International Center for		
Diarrhoeal Disease Research	0.11	
Ministry of Agriculture	0.07	
<i>Bhutan</i>		
Ministry of Health and Education	0.02	
Royal Civil Services Commission	0.02	
Royal Institute of Management	0.01	
<i>Cambodia</i>		
CIDSE Cambodia	0.01	
PADEK - Phnom Penh	0.01	
<i>Canada</i>		
Canadian High Commission	0.01	
CUC	0.04	
IDRC	0.18	
<i>People's Republic of China</i>		
Foreign Economics Cooperation Office	0.02	
<i>Chinese Taipei</i>		
Industrial Technology Research Institute	0.07	
<i>Denmark</i>		
Danish Hydraulic Institute	0.28	
<i>Fiji</i>		
Forum Secretariat	0.17	
Housing Authority	0.06	
<i>Germany</i>		
University of Dortmund	0.07	
<i>Ghana</i>		
Social Security National Insurance Trust	0.01	
<i>Hong Kong</i>		
Auxiliary Medical Services	0.02	
Civil Aids Service	0.02	
Treasury Financial Control Section	0.01	
<i>India</i>		
State Bank of India	0.02	
<i>Indonesia</i>		
Christian University	0.03	
Ketua Stmrix Gunadarams	0.08	
Institute Teknologi Bandung	0.01	
Ministry of Health	0.03	
Ministry of Home Affairs	0.25	
Pasudan University	0.06	
Pihak Berkuasa Kemajuan	0.01	
Petra Christian University	0.10	
PPPGT/VEDC Malang	0.01	
Second Higher Education		
Development Project	0.13	
Tarumanagara University	0.02	
University Atma Jaya, Yogyakarta	0.09	
<i>Japan</i>		
Central Research Institute of		
Electrical Power Industry	0.03	
National Space Agency of Japan	0.01	
<i>Malaysia</i>		
Civil Defense Department	0.01	
Economic Planning Unit	0.01	
Ministry of Education	0.52	
Ministry of Rural Development	0.01	
Ministry of Housing and Local		
Government	0.01	
Prime Minister's Office	0.02	
RISDA	0.01	
Selangor State Secretariat	0.02	
Urban Development Authority	0.01	
<i>Nepal</i>		
Pakhribas Agricultural Center	0.01	
Institute of Forestry Project	0.01	
<i>Pakistan</i>		
Ministry of Education	0.04	
Punjab College of Business		
Administration	0.10	
Swabi Irrigated Agricultural Project	0.01	
Water and Power Development Authority	0.01	
<i>Philippines</i>		
Department of Health	0.02	
Department of Science and Technology	0.03	
National Disaster Coordinating Council	0.01	
National Irrigation Administration	0.31	
University of the Philippines	0.01	
<i>Sri Lanka</i>		
Bank of Ceylon	0.02	
Central Bank of Sri Lanka	0.26	
Ceylon Institute of Science and		
Industrial Research	0.02	
Department of Examinations	0.01	
Development Cooperation of Ceylon	0.01	
Development Finance Corporation		
of Ceylon	0.04	
Integrated Rural Development Project	0.06	
MARD Project	0.06	
Ministry of Education	0.03	
Ministry of Finance	0.02	
Ministry of Fisheries and Aquatic		
Resources	0.01	
Ministry of Irrigation, Water		
Development and Flood Control	0.08	
National Development Bank	0.08	
Sri Lanka Export Development Board	0.01	
<i>Tanzania</i>		
University of Dar-es-Salaam	0.01	
<i>Thailand</i>		
Airports Authority of Thailand	1.50	
Bangkok Metropolitan Administration	0.03	
Bangkok Technical Campus	0.03	
Bank for Agriculture and Agricultural		
Cooperatives	0.04	
Bank of Thailand	0.08	
Chulalongkorn University	0.02	
Communications Authority of Thailand	0.52	
Department of Mineral Resources	0.03	
Department of Technical and		
Economic Cooperation	0.62	
Electricity Generating Authority		
of Thailand	0.74	
Metropolitan Electricity Authority	0.02	
Ministry of Interior	0.08	
Ministry of Science, Technology and		
Environment	0.04	
Ministry of University Affairs	0.03	
Naresuan University	0.03	
National Commission on Women's		
Affairs	0.01	

National Economic and Social Development Board	0.55
National Housing Authority	0.02
National Inland Fisheries Institute Kasetsart Univesity	0.05
National Science and Technology Development Agency	0.02
Office of Environmental Policy and Planning	0.14
Petroleum Authority of Thailand	0.21
Rajamangala Institute of Technology	0.04
Royal Forestry Department	0.02
Royal Thai Navy	0.11
Securities and Exchange Commission	0.05
Telephone Organization of Thailand	0.38
Ubon Ratchatani University	0.05
<i>United Kingdom</i>	
UCLES	0.33
University of Wales	0.05
<i>United States of America</i>	
Academy for Educational Development	0.21
International Development Association	0.11
Peace Corps	0.24
University of Michigan	0.20
US Environmental Training Institute	0.09
<i>Vietnam</i>	
General Department of Taxes	0.04
Information and Documentation Center for Science and Technology	0.02
Petrovietnam	0.05
<i>Sub-total</i>	10.93

BUSINESS, FOUNDATIONS, PRIVATE AND OTHERS

AMP Corp.	0.02
Bangkok Ria Co. Ltd.	0.01
BCEOM	0.34
BIL Finger Berger (Thai) Construction Co. Ltd.	0.02
China Trust Commerical Bank	0.01
Christiani and Neilsen (Thai) Plc. Co. Ltd.	0.03
Cici Corp., Chinese Taipei	0.01
Civil Engineering Co. Ltd.	0.02
CITIBANK NA - Bangkok	0.01
Chemonics International, USA	0.04
Daysafe International Ltd.	0.01
Diakonisches Werk, Germany	0.06
Ecumenical Scholarship Program	0.01
Euroconsult, B. V. - Netherlands	0.04
ERABA Corp., Japan	0.07
Ericsson Telephone Corp. Far East	0.03
Experly Technology Equipment Co. Ltd.	0.01
Finance One Plc. Co. Ltd.	0.39
Friedmann and Johnson Consultants	0.33
Geo Asia Co. Ltd.	0.04
Geotechnic Thailand Ltd.	0.28
Geotechnical Engineering Industry Co. Ltd.	0.01
GTM Corp. Ltd.	0.03
I.G.S. Public Co. Ltd.	0.03
IMEX Engineering Co. Ltd.	0.02
Index International Group Co. Ltd.	0.01

International Blaster Co. Ltd.	0.03
International Rubber Parts Co. Ltd.	0.01
Italian Thai Development Plc. Co. Ltd.	0.07
Joint Venture BBKS	0.18
Kuensel Corp., Bhutan	0.02
Lahmeyer International GMBH	0.01
March Consulting Group - UK	0.33
Marg Ltd., UK	0.03
N-Line Agro International Co. Ltd.	0.03
Nam Theun I/II (EDF), Laos	0.06
Narai Technology Co. Ltd.	0.02
Nathan Association Inc., Bangladesh	0.26
Nawarat Patanakarn Co. Ltd.	0.05
NEC Engineering (Thailand) Co. Ltd.	0.02
Nishihara Co. Ltd.	0.11
Nokia Telecommunications Thailand	0.18
Okuminisches Studien Werk E.V.	0.03
P. T. Pupuk Kalimantan Timur	0.04
P.T. Waskita Karya, Indonesia	0.01
Paris Chamber of Commerce and Industry	0.31
Passavant Werks A. G., Germany	0.03
Pattaya Park Beach Hotel	0.02
Polyfelt GMBH	0.01
Quality Training (Thailand) Co. Ltd.	0.01
Showa Solar Energy K.K., Japan	0.01
Siam Cement Co. Ltd.	0.10
Siam DHV Ltd.	0.03
SIEMENS Systems Ltd.	0.01
Sino Geotechnology Corp. Inc.	0.03
Taisei (Thailand) Co. Ltd.	0.01
Taiwan Cement Bhd., Malaysia	0.01
Telekom Malaysia Bhd.	0.02
Tenax Spa, Italy	0.05
Thai-Laos Lignite Co. Ltd.	0.05
Thai Nishimatsu Construction Co. Ltd.	0.01
Trancy Seafood Products Co. Ltd.	0.02
3M Thailand Limited	0.02
VSL (Thailand) Co. Ltd.	0.01
YME Group, Vietnam	0.04
Urban Wing Corp.	0.02
AEON Group Environmental Foundation, Japan	0.26
AIT Foundation Inc.	0.07
AEEMTRC	0.01
APFWLD	0.01
Bangladesh-Canada Cooperation Diversification	0.09
Care - India	0.01
Chulabhorn Research Institute	0.08
Education and Public Welfare Foundation	0.13
German Foundation for International Development	0.02
Halvetas, Bhutan	0.07
Harvard University	0.03
Innertap, Philippines	0.03
International Federation of Library Associations	0.10
International Federation of the Red Cross and Red Crescent Society	0.03
Japan-Indonesia Science and Technology Forum	0.19
Japan Red Cross Society	0.01
Japan Tunneling Association	0.17

JFK Foundation of Thailand	0.20
Keidanren	0.84
Laos-German Forestry Team	0.10
Liaison Office of Denmark - Bhutan	0.03
Mennonite Central Committee	0.01
Nepal Red Cross	0.01
Nepalese-German Technology Cooperation	0.01
Norton Networks Scholarship	0.01
Pak-German Technology Training Center	0.09
Ramon Magsaysay Award Foundation	0.03
St. Joseph Institute of Technology, Phil.	0.03
Save the Children Fund	0.03
Technical Cooperation Facility	0.08
Thai Red Cross Society	0.02
Thai Tapioca Development Institute	0.11
University of Georgia	0.04
Vietnam-Sweden Forestry Corp. Program	0.01
Wat Yarnasangwararam	0.01
Winrock International	0.04
World Council of Churches	0.01
World Vision of Bangladesh	0.05
Worldwide Fund for Nature International	0.02
Aoyagi, Y. Prof.	0.01
Meada, Kenji Mr.	0.06
Others	0.22

Sub-Total 7.57

TOTAL 100.00

Support was also extended by the following groups and organizations:

Australian International Solar Energy Society, Eastern Indonesian Universal Development Project, Mandala Agricultural Development Corp., Singapore Housing and Development Board, Sri Lanka Agricultural Research Project, Thammasat University, ALMEC Corp., Daihatsu Phranakorn Motor Co., Ltd., Hydro Flap Co. Ltd., I.B.S. Co. Ltd., K. Lines(Thailand) Ltd., Meta Institute, Inc., Mitsubishi Soko (Thailand) Co. Ltd., Mitsui O.S.K. Lines (Thailand) Co. Ltd., M.C. Construction (1979) Co. Ltd., N.Y.K. (Thailand) Co. Ltd., Nippon Express (Thailand) Co. Ltd., Nylex(Malaysia) Bhd., Oriental Consultant Ltd., Sathorn Sombat Co. Ltd., Serm Sa-Nguan Construction Co. Ltd., Song Mao Nonwoven Co. Ltd., STS Engineering Consultant Co. Ltd., Sumitomo Corp. Thailand Ltd., Thai Arrow Products Co. Ltd., Thai Meada Corp. Ltd., Vianini-Thai Construction and Development Co. Ltd., and Church World Services, USA.

CENTRAL ADMINISTRATION

CAMPUS DEVELOPMENT

Building Construction

In 1995, the Institute completed the construction of the following academic buildings: Biotechnology, Chalm Prakiat, Aquaculture, and an extension to the water resources laboratory.

The Biotechnology building was built at a cost of some 12.6 million Baht. Funds to support building construction and acquisition of equipment were provided by the Royal Thai Government, the John F. Kennedy Foundation of Thailand, the Thai Farmers Bank Public Co. Ltd., and the Education and Public Welfare Foundation of Thailand.

The Chalm Prakiat Building houses laboratories, classrooms and offices for the industrial systems engineering programs. It was built from funds provided by Dr. Somsak Leeswadtrakul, owner and shareholder of business enterprises, the SSP Group of Companies in Bangkok. The 30 million Baht Chalm Prakiat Building is expected to be inaugurated in mid-1996.

The extension to the water resources laboratory was built from construction funds given by the Royal Thai Government. It cost 6.8 million Baht.

A two-storey structure built at a cost of 1.8 million Baht, the Aquaculture Building is located near the AFE Building. Prefabricated components developed by AIT's Habitech Center were used in the construction.

The P Block, a new dormitory accommodation, was constructed in response to growing demand for campus housing. Built at a cost of 9.9 million Baht using funds borrowed from the General Reserve Loan, the P Block provides 30 housing units.



Top row: The Chalm Prakiat Building.

Middle row: Academic buildings for programs in aquaculture (left), and bioprocess technology (right).

Left: Extension to the water resources engineering laboratory.

Eighty-four various size housing units will be made available in 1996 when Staff Housing No. 9 opens. Construction costs for ST-9 are estimated to reach 49 million Baht. Funds were obtained from the General Reserve Loan.

PROCUREMENT

The newly established Procurement department is made up of the purchasing, travel, and insurance sections and the government relations office.

One of the department's priority activities is the computerization of various purchasing-related activities. These include compilation of a relevant vendors' database, systematization of purchase requests and purchase orders, and classification of purchases in terms of prices, demand and supply trends, and so on.



The demand for campus accommodation is increasing and additional housing units, similar to the one above, are under construction.

HUMAN RESOURCES

Employee relations

The Human Resources Office completed the revision of the terms and conditions for permanent employment of local hire staff. A new handbook incorporating the revisions was published.

Development of a computerized system for processing personnel action was completed. The office put into effect an insurance scheme for casual workers (workmen's compensation).

Some activities initiated in 1995 are expected to be completed in 1996. Among these are a study of the terms and conditions for employment of fixed-term local hire staff and the preparation of relevant recruitment guidelines and publication of a comprehensive staff manual. Also awaiting completion is the computerization of personnel action forms.

Training and Staff Development

Opportunities for upgrading courses, particularly in English language skills and computer applications, were made available to all interested staff.

In addition to on-campus upgrading courses, opportunities to attend off-campus seminars on topics of interest to AIT and all staff were encouraged. A field trip was arranged for senior technicians to visit "World Tech Fair" in northeast Thailand.

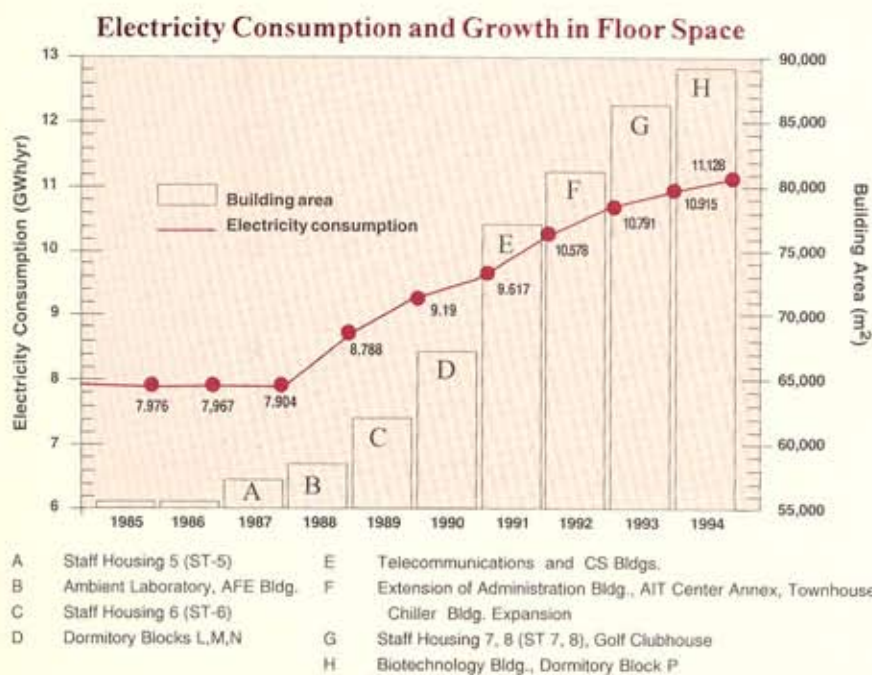
Orientation procedures for incoming staff were upgraded.

In 1996 opportunities to join staff upgrading courses will be expanded. English language training will be offered to Klong Luang policemen and AIT security guards. Rigorous re-training will be provided in computer applications.

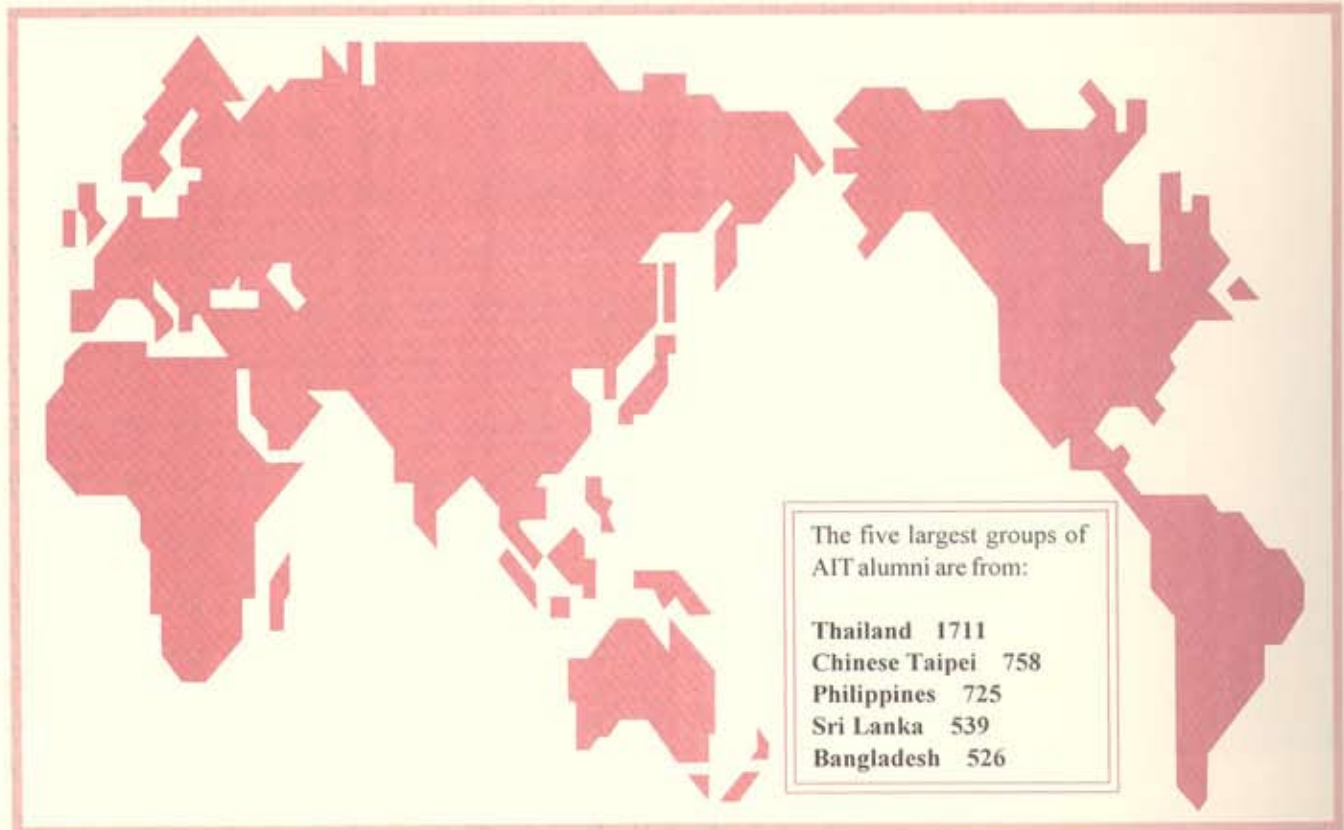
Energy Conservation

Institute-wide energy consumption patterns, compared with the growth in floor space over the past decade, will interest energy conservation enthusiasts. (See chart provided by the Physical Plant).

The implementation of various energy conservation measures in 1996 are expected to further improve efficient energy use on campus. These measures include the installation of an ice storage tank connected to the chiller to even out the peak load demand in the Institute.



ALUMNI RELATIONS



ALUMNI DISTRIBUTION BY COUNTRY 1961-1995

Southeast Asia and Pacific

1. Brunei	10
2. Cambodia	12
3. Fiji	1
4. Indonesia	390
5. Laos	14
6. Malaysia	269
7. Maldives	1
8. Myanmar	136
9. Papua New Guinea	8
10. Philippines	725
11. Singapore	28
12. Thailand	1711
13. Tonga	1
14. Vietnam	333

South and West Asia

1. Afghanistan	19
2. Bangladesh	526
3. Bhutan	4
4. Egypt	1
5. India	518
6. Iran	12
7. Nepal	400
8. Pakistan	524
9. Sri Lanka	539
10. Turkey	6

East Asia

1. PRC	295
2. Chinese Taipei	758
3. Hong Kong	87
4. Japan	54
5. Republic of Korea	109
6. Macao	7
7. Mongolia	4

North America, Europe and Africa

1. Belgium	1
2. Bolivia	1
3. Canada	5
4. Ethiopia	1
5. Finland	2
6. France	5
7. Germany	2
8. Ghana	2
9. Honduras	1
10. Kenya	2
11. Malawi	3
12. The Netherlands	2
13. Nigeria	1
14. Sweden	2
15. Tanzania	8
15. UK	3
17. USA	11

Source: Office of Alumni Affairs
March 1996

AIT ALUMNI ASSOCIATION

AITAA now has 20 chapters, following the establishment of chapters in Vietnam, Myanmar and China. The Vietnam Chapter is headed by a president and two vice presidents - one based in Hanoi and the other in Ho Chi Minh City.

AITAA CHAPTER PRESIDENTS

Australia

Dr. Haitao Ma (SEC '90)
Research and Development Engineer
G&D Computing Pty. Ltd.
Sydney

Bangladesh

Dr. Md. Nazrul Islam (IEM '82)
Associate Professor
Institute of Appropriate Technology
Bangladesh University of Engineering
and Technology
Dhaka

Brunei Darussalam

Mr. Yong Foh Fui (EE '75)
District Water Engineer
Water Section
Public Works Department
Bandar Seri Begawan

Chinese Taipei

Mr. Yen-Yi Tseng (CRD '73)
President
Ret-Ser Engineering Agency

Hong Kong/Macao

Mr. Ted T.C. Chan (CRD '76)
Managing Director, TESCO
Causeway Bay
Hong Kong

India

Dr. Ashok Kumar Gupta (CRD '71)
Professor and Coordinator
Center of Transportation Engineering
University of Roorkee
Roorkee

Indonesia

Mr. Martsanto Ds (WRE '90)
Deputy Head Officer
Riau Development Coordinating Office
Ministry of Public Works
Jakarta

Japan

Mr. Sosuke Nishimura (EE '92)
Engineering Researcher
R&D Division
Kurita Central Laboratories
Atsugi City

Republic of Korea

Mr. Chang-Pyung Hann (SEC '80)
President
CHEON-IL Architectural Design
and Engineering Co. Ltd.
Seoul

Malaysia

Mr. Kee Book Hee (EE '82)
Executive Director
V-Pile Sistem Sdn. Bhd.
Petaling Jaya, Selangor, Darul Ehsan

Myanmar

Mr. U Lin (IEM '83)
Director
Cho Cho Trading Co. Ltd.
Yangon

Nepal

Mr. Pramod Sagar Singh Pradhan (CS '82)
Program Coordinator
MENRIS, ICIMOD
Kathmandu

Pakistan

Mr. Shaukat Khan (AFE '79)
Chief Executive Officer
Waterman Consultants
Islamabad

People's Republic of China

Mr. Hu Biliang (HSD '91)
Economic Officer
World Bank Resident Mission
Beijing

Philippines

Dr. Primitivo Calang Cal (CRD '70)
Undersecretary
Dept. of Transportation and Communications
Metro Manila

Singapore

Mr. Ho Siew-Koon (WRE '71)
Senior Principal Engineer
Housing and Development Board
Singapore

Sri Lanka

Mr. W.J.S. Fernando (ET '82)
Deputy General Manager
(Generation Planning)
Ceylon Electricity Board
Colombo

Thailand

Dr. Somchet Thinaphong (WRE '80)
Governor
Industrial Estate Authority of Thailand
Bangkok

USA

Dr. Rakesh Sarman (GTE '80)
Consulting Engineering Geologist
Woodward-Clyde Consultants
Livonia, Michigan

Vietnam

Prof. Pham Phu (WRE '82)
Dean
Ho Chi Minh City University of Technology
Ho Chi Minh City

AITAA Governing Board Meeting

The 24th AITAA Governing Board Meeting was held on 21-24 June 1995 in Seoul, Republic of Korea, under the auspices of AITAA-Korea Chapter.

A symposium on the role of education in the construction of infrastructures in Asia-Pacific countries highlighted the meeting. It was chaired by Prof. Pisidhi Karasudhi (SEC '65) and co-chaired by Mr. Chang-Pyung Hann (SEC '80), AITAA-Korea Chapter President.

Resource persons for the symposium and their respective papers were as follows:

AIT President Alastair North
Technology Education for Development: Construction of Physical Infrastructure

**Prof. Khalid Saeed/
Prof. Okitsugu Fujiwara**
AIT's Multidisciplinary Program in Infrastructure Planning and Management for the Development of the Asia-Pacific Region in the 21st Century

Mrs. Chuanpit Dhamasiri (EE'68)
Role of Education in the Infra-construction of Thailand - Human Resources Development

Dr. Sang-Kyu Kim (GTE'70)
Role of Engineering Education in the Economic Growth of Korea

Dr. Guna N. Paudyal (WRE '82, '86)
Use of Mathematical Modelling for Planning and Management of Large Scale Water Resources Development

Scenes from the 24th AITAA GBM



Top photo, from left: Mrs. Chuanpit Dhamasiri, AIT President Alastair North, Mr. Chang Pyung-Hann, and Mrs. Lilia Austriaco.

Middle photos. Left: AIT Trustee, Dr. Kim Chung-Gil, second from left, with AIT alumni, Mrs. Fe Ferriols and Messrs. Prapan Angkapanichcharoen, Thanin Bumroongsup, Zue-Min Hwang, and Anthony Chiu. Right: AITAA-Japan Chapter President, Mr. Sosuke Nishimura, presented a donation to the AITAA Endowment Fund. Also in photo are Prof. Pisidhi Karasudhi, AIT Vice President for Development, Mrs. Chuanpit and Mrs. Austriaco.

Above: A welcome song from the Korean alumni and their spouses.

AITAA Forum

Regular dialogues between the Institute administration and senior alumni in influential positions provide opportunities for the sharing of experiences and views on relevant academic, structural and financial issues. The second AITAA Forum, **Advancing AIT: Image, Relevance and Excellence**, was held on 3 May 1995. Senior alumni panelists in the 1995 forum were as follows:

Dr. Primitivo Cal (CRD '70)
Undersecretary
Department of Transportation
and Communications
Philippines

Mr. Laxman Prasad Ghimire (CRD '72)
Executive Director
East Consult Pvt. Ltd.
Nepal

Dr. Tongchat Hongladaromp (SEC '62)
Chairman, Executive Committee,
and CEO PetroAsia International
Corp.
Thailand

Dr. Yew-Chaye Loo (SEC '68)
Professor and Head
School of Civil Engineering
Griffith University
Australia

INSTITUTE-BASED ALUMNI ACTIVITIES

Alumni support activities are initiated and carried out by the Office of Alumni Affairs, under the Office of the Vice President for Development. Major activities carried out in 1995 included the distribution of the 1993 Alumni Tracer Study Summary and preparations for the 1996 study. In addition, the Alumni Affairs Office undertook major revisions to the alumni database to make it more comprehensive and user-friendly.

Alumni Tracer Study

1993 Tracer Study Summary

Distribution of the 1993 Alumni Tracer Study Summary, which was first released in April 1995, was completed. Copies were mailed to all trustees, donors, faculty, AITAA chapters, and other concerned recipients. The survey respondents were given one copy each.

Preparations for the 1996 Study

Preparations are underway for the 1996 alumni tracer study.

Alumni tracer studies are conducted by the Institute once every three years to monitor the career development and professional growth of alumni. The findings provide a basis for curricular changes and innovations introduced by the Institute vis-a-vis its teaching, research and outreach objectives.

AIT Alumni Database and Directory

With assistance from the Administrative Systems Development Unit, further modifications are being made to the alumni database to make it more efficient. To ensure the accuracy and comprehensive coverage of the database, completion of an alumni information dataform is now required of all students prior to graduation.

The alumni database is maintained by the Alumni Affairs Office, and access is provided to authorized users. The database is updated regularly and is put to maximum use in conducting the alumni tracer study.



1995 LIST OF FACULTY MEMBERS

FULL TIME FACULTY

(Full time faculty members are listed in alphabetical order. The italicized entries within the parentheses are their respective fields of study and *Schools, or Academic Centers*. Please refer to the list of abbreviations on page 35).

Kazi Mohiuddin Ahmed

M.Sc., Leningrad;
Ph.D., Univ. of Newcastle, NSW, Australia.
Associate Professor (*TC, SAT*)

A.T.M. Nurul Amin

B.A. (Hons.), M.A., Dhaka;
M.A., Ph.D., Manitoba.
Associate Professor (*UPLHD, SERD*)

Hans C.A. Ammentorp

B.Sc., Danish Hydraulic Inst.;
M.Sc., Tech. Univ. of Denmark.
Associate Professor (*WRD, SCE*)

Haja H. Andrianasolo

B.Sc.; DEUG., D.E.A., Paris VII;
Ph.D., Ecole Pratique des Hautes Etudes en
Sciences Sociales.
Assistant Professor (*RSGIS, SERD*)

Ajit P. Annachhatre

B.Tech., IIT Kanpur; Ph.D., IIT.
Associate Professor (*BPT, ETM, WWE, SERD*)

Yukio Aoyagi

B.Eng., M.Eng., D.Eng., Univ. of Tokyo.
Professor (*STE, SCE*)

Ray W. Archer

B.A. (Hons), Sydney; M.R.A.P.I.
Professor (*UPLHD, SERD*)

Scott A. Ashford

B.S., Oregon State;
M.S., Ph.D., California, Berkeley.
Assistant Professor (*SE, SCE*)

Andrew Atzert

B.A., Rutgers; M.S. Ed., Pennsylvania.
Assistant Professor (*CLET*)

A.S. Balasubramaniam

B.Sc., Ceylon; Ph.D., Cambridge.
Chair Professor (*SE, SCE*)

Dentcho N. Batanov

B.Sc., M.Sc., Ph.D., Tech. Univ., Sofia.
Associate Professor (*CS, SAT*)

Dennes T. Bergado

B.S.C.E., Mindanao State; M. Eng., AIT;
Ph.D., Utah State.
Associate Professor (*SE, SCE*)

S.C. Bhattacharya

B.E. (Mech.); M.E., Roorkee; Ph.D., Cambridge.
Professor (*ET, SERD*)

Erik Bohez

B.Eng., High Tech. Inst. St. Antonius, Ghent;
M.Eng., State Univ., Ghent, Belgium.
Assistant Professor (*ISE, SAT*)

Marie-France Champagne

Maitrise, DEA Sorbonne.
French Instructor (*CLET*)

Chotchai Charoenngam

B.Eng. (Hons.), KMITT; M.Sc., Kansas;
Ph.D., Texas (Austin).
Assistant Professor (*CEM, SCE*)

Jian-Shiuh Chen

B.S., National Cheng-Kung;
M.S., National Chung-Hsing;
M.S., Georgia Inst. of Tech.;
Ph.D., Pennsylvania State.
Assistant Professor (*TE, SCE*)

Xavier Chen

M.Sc., AIT; D.E.A., Ph.D.,
Université Pierre-Mendes France de Grenoble.
Associate Professor (*EEP, SERD*)

Surapong Chirarattananon

B.Eng., UNSW; M.Eng.Sc., Monash;
Ph.D., Newcastle.
Associate Professor (*EPSM, ET, SERD*)

Terry Clayton

B.A., Acadia; B.Ed., Mount Saint Vincent;
M.Sc., Rutgers.
Assistant Professor, (*CLET*)

Michael Connelly

B.A. (Hons.), M.A. (Hons.), Cantab;
M.A., Ph.D., Essex.
Associate Professor (*CLET*)

HONORARY FACULTY

Her Royal Highness Princess Maha Chakri Sirindhorn is an Honorary Faculty Member of the Institute associated with the Space Technology Applications and Research Program.

Reidar Dale

M.Phil., D.Phil., Oslo.
Associate Professor (*RRDP, SERD*)

Giap Van Dang

Dipl., INSTN, Saclay;
Ph.D., Panthéon-Sorbonne, Paris 1.
Associate Research Professor
(*EEP, EPSM, SERD*)

Jean-Pierre Delsol

B.Sc., C.E.S.S., D.E.A., Ph.D., Paris VIII Univ.
Associate Professor (*RSGIS, SERD*)

Harvey Demaine

B.A., Oxford; M.Sc., Ph.D., London.
Associate Research Professor (*AT, SERD*)

Hiran D. Dias

M.A., Ph.D., Cambridge.
Professor (*RRDP, SERD*)

Nicholas Dimmit

B.A., M.A., San Francisco State;
Ph.D., Southern California.
Assistant Professor (*CLET*)

Phan Minh Dung

M.Sc., Ph.D., Univ. of Tech., Dresden.
Associate Professor (*CS, SAT*)

Peter Edwards

B.Sc., Liverpool; Ph.D., Univ. of Texas (Austin).
Research Professor (*AT, SERD*)

Apisit Eiumnoh

B.Sc., Kasetsart; M.Sc., Sheffield;
Ph.D., North Carolina State.
Associate Professor (*NRC, SERD*)

Tapio Erke

M.Tech, Helsinki Univ. of Tech.
Assistant Professor (*TC, SAT*)

Vatcharaporn Esichaikul

B.Acc. (Hons.), Chulalongkorn;
M.B.A., Oklahoma State; Ph.D., Kent State.
Assistant Professor (*IM, SAT*)

Okitsugu Fujiwara

B.S., M.S., Osaka; M.S., Stanford;
M.A., M.Phil., Ph.D., Yale.
Professor (*IPM, SCE*)

Shigeru Fukushima

B.Eng., M.Eng., Nagaoka Univ. of Tech.;
D.Eng., Tokyo.
Assistant Professor (*UPLHD, SERD*)

David Gee-Clough

B.Sc., M.E., Wales; M.S., Cal. Tech.;
Ph.D., California (Davis)
Professor (*AMM, SERD*)

Ashim Das Gupta

B.E., Gauhati, India; M.Eng., D.Eng., AIT.
Professor (*IREM, WRD, SCE*)

Chandra P. Gupta

B.Sc., Agra;
B.Tech., M.Tech., Ph.D., IIT (Kharagpur).
Professor (*AMM, SERD*)

Jyoti P. Gupta

B.Sc., Lucknow; B.Tech. (Hons.), IIT,
Kharagpur; Ph.D., Manchester.
Professor (*MOT, IB, SOM*)

John B. Hambrey

B.A., Cantab.; D.Tech.Econ., Ph.D., Stirling.
Assistant Professor (*AT, SERD*)

Gunner Kjer Hansen

M.Sc., Ph.D., Dr. Science,
Royal Vet. & Agr. Univ., Denmark.
Associate Professor (*APM, SERD*)

Ian Sehested Hansen

M.Sc., Tech. Univ. of Denmark.
Associate Professor (*ETM, WWE, SERD*)

Ricardo Harboe

Civil Eng., Univ. of Chile; M.S., Ph.D., UCLA,
Habilitation, Ruhr Univ., Bochum, Germany.
Professor (*IREM, WRD, SCE*)

Kazunori Hokao

B.Eng., Nagasaki; M.Eng., D.Eng., Waseda.
Associate Professor (*TE, SCE*)

Barbara Igel

M.A. (Econ.), Berlin; Ph.D. (Econ.), Freie Univ.
Assistant Professor (*MOT, SOM*)

Fumihiko Imamura

B.Eng., M.Eng., D.Eng., Tohoku Univ.
Associate Professor (*RCE, SCE*)

Vinod K. Jindal

B.Sc. A.E., Pantnagar; M.S., Nebraska;
Ph.D., Pennsylvania State.
Professor (*PFPE, SERD*)

Hans Detlef Kammeier

Dipl. Ing., Munich; Reg. Brmstr.
Associate Professor (*UPLHD, SERD*)

Kanchana Kanchanasut

B.Sc., Dip. Comp. Sc., Queensland;
M.Sc., Ph.D., Melbourne.
Associate Professor (*CS, SAT*)

Worsak Kanok-Nukulchai

B.Eng. (Hons.), Chulalongkorn; M.Eng., AIT;
Ph.D., California (Berkeley).
Professor (*STE, SCE*)

Pisidhi Karasudhi

B. Eng., Chulalongkorn; M.Eng., SEATO
Graduate School; Ph.D., Northwestern.
Chair Professor (*STE, SCE*)

Etienne Karmazsin

M.Sc., D.E.A., Ph.D., Univ. Claude Bernard, Lyon.
Professor (*ET, SERD*)

Govind Kelkar

B.A., M.A., LL.A., Univ. of Lucknow;
M.A., Univ. of Michigan; Ph.D., Univ. of Delhi.
Associate Professor (*GDS, SERD*)

Do Ba Khang

M.Sc. (Math), Eotvos Lorand Univ. of Budapest;
M.Sc., Ph.D., AIT.
Assistant Professor (*MOT, IB, SOM*)

Young Bae Kim

B.A., Seoul National Univ.;
M.S., Ph.D., KAIST, Korea.
Associate Professor (*IB, SOM*)

Yuji Kohgo

B.S., Tokyo Univ. of Agriculture and Tech.;
Ph.D., Univ. of Tokyo.
Assistant Professor (*IREM, SCE*)

Yasuyuki Kono

B.Agr., M.Agr., D.Agr., Univ. of Tokyo.
Assistant Professor (*IREM, SCE*)

Wolfgang Kuehn

Dipl. Ing. Tech. Univ. of Braunschweig;
Dr. Ing., Univ. of Bremen; Germany.
Associate Professor (*ISE, SAT*)

Sivanappan Kumar

B.E. (Hons.), U. of Madras; M.Eng., AIT;
Ph.D., Institut National Polytechnique, Toulouse.
Associate Professor (*ET, SERD*)

Harumichi Kyotoh

B.Eng., Tokyo Inst. of Tech.;
M.Eng., D.Eng., Tsukuba.
Assistant Professor (*RCE, SCE*)

Bernard G. Lefebvre

B.Sc. Arch., B.Arch., M.Arch., McGill;
M.Sc., Quebec.
Associate Professor (*UPLHD, SERD*)

Thierry Lefevre

Eng.; DEA; Ph.D., Toulouse.
Associate Professor (*EEP, SERD*)

C. Kwei Lin

B.Sc., Chung Hsin; M.Sc., Alberta;
Ph.D., Wisconsin.
Professor (*AT, SERD*)

David C. Little

B.Sc., Liverpool; M.Sc., Ph.D., Stirling.
Associate Professor (*AT, SERD*)

Rainer Loof

Dipl. Ing., Technical Univ., Hannover.
Associate Professor (*IREM, WRD, SCE*)

Ragnhild Lund

Ph.D., Bergen.
Associate Professor (*RRDP, SERD*)

Kimmo Makelainen

M.Sc., Lic. Tech. (Ph. D.), Helsinki Univ. of Tech.
Assistant Professor (*TC, SAT*)

Arif Saeed Malik

B.Sc., Univ. of Eng. & Tech., Lahore;
M.Sc., Wisconsin-Madison;
Ph.D., Imperial College, London.
Assistant Professor (*EPSM, SERD*)

Brahmanand Mohanty

B.Sc., S.A.I.C.E.; M.Sc., AIT;
Ph.D., INP Toulouse.
Associate Professor (*ET, SERD*)

Hisa Morisugi

B.S., Kyoto; M.A., Pennsylvania; D.Eng., Kyoto.
Professor (*IPM, TE, SCE*)

Shunji Murai

B.Eng., D.Eng., Tokyo.
Chair Professor (*CS, SAT; RSGIS, SERD*)

Appendix

Narasipur S. Murali

B.Sc. (Agr.), Bangalore, India; M.Sc., AIT;
Ph.D., Royal Vet. and Agri. Univ., Copenhagen.
Associate Professor (*APM, SERD; IREM, SCE*)

V.V.N. Murty

B.Tech. (Hons.), M.Tech., IIT (Kharagpur);
Ph.D., California (Davis).
Professor (*IREM, SCE; APM, SERD*)

Samorn Muttamara

B.Sc., Chulalongkorn; M.S., Oregon State.
Associate Professor (*ETM, WWE, SERD*)

Nagendra N. Nagarur

B.Tech., REC Warangal; M.S., Wichita State;
Ph.D., Virginia Polytechnic.
Associate Professor (*ISE, SAT*)

Pichai Nimityongskul

B.Eng., Chulalongkorn; M.Eng., D.Eng., AIT.
Associate Professor (*STE, SCE*)

Junichiro Niwa

B.Eng., M.Eng., D.Eng., Tokyo.
Associate Professor (*STE, SCE*)

Athapol Noomhorm

B.Sc., Kasetsart; M.Eng., Texas;
Ph.D., Louisiana State.
Associate Professor (*PFPE, SERD*)

Alastair M. North

B.Sc., Aberdeen; Ph.D., Birmingham;
D.Sc., Aberdeen.
Chair Professor in Applied Science

Kaew Nualchawee

B.S., Chulalongkorn; M.S., Connecticut;
Ph.D., Colorado State.
Associate Professor (*RSGIS, SERD*)

Prinya Nutalaya

B.A., M.S., Ph.D., Colorado.
Professor (*EAG, SCE*)

Stephen O. Ogunlana

B.Sc., M.Sc., Ife, Nigeria;
Ph.D., Loughborough, UK.
Associate Professor (*CEM, SCE*)

Yasuhide Okuyama

B.S., Tokyo Univ. of Education;
M.S., California, Berkeley; D.Eng., Kyoto.
Professor (*TE, SCE*)

Ricardo P. Pama

B.S.C.E., Mapua Inst. of Tech.;
M.Eng., Chulalongkorn-SEATO
Graduate School; Ph.D., St. Andrews.
Professor (*STE, SCE*)

P.C. Pandey

B.Sc. Eng., Banaras Hindu;
P.G. Dipl., King's College; Ph.D., Nottingham.
Professor (*ISE, SAT*)

Preeda Parkpian

B.Sc. (Hons.), Kasetsart;
M.Sc., Mississippi State Univ.;
Ph.D., Texas A&M Univ.
Assistant Professor (*NRC, SERD*)

Huynh Ngoc Phien

B.Sc., B.A., Hue; M.Sc., D.Tech.Sc., AIT.
Professor (*CS, SAT; IPM, SCE*)

Noppadol Phien-wej

B.Eng. (Hons.), Chulalongkorn;
M.S., Ph.D., Illinois, Urbana-Champaign.
Associate Professor (*EAG, SCE*)

Michael J. Phillips

B.Sc., Ph.D., Stirling.
Associate Professor (*AT, SERD*)

Chongrak Polprasert

B.Eng., Chulalongkorn; M.Eng., AIT;
Ph.D., Washington.
Professor (*ETM, WWE, SERD*)

Sudip K. Rakshit

B.Sc. (Hons.), Madras; B.Tech. (Jadabpur);
M.Tech., Ph.D., IIT, Delhi.
Associate Professor (*BPT, PFPE, SERD*)

K. Ramanathan

B.Sc. (Hons.), Ceylon; Post Grad. Dip., Colombo;
M.Eng., D.Eng., AIT.
Associate Professor (*MOT, SOM*)

Amador A. Remigio, Jr.

B.Sc., M.Sc., Univ. of Philippines;
M.Sc., Ph.D., Univ. of London.
Assistant Professor (*NRC, SERD*)

Lars B. Reutergardh

B.Sc., M.Sc., Ph.D., Stockholm.
Associate Professor (*ETM, WWE, SERD*)

J.K. Routray

B.Sc. (Hons), M.Sc., Ph.D., Utkal;
M.R.P., IIT, Kharagpur.
Associate Professor (*RRDP, SERD*)

R. Sadananda

B.E., Mysore; M.E., Roorkee; Ph.D., IIT, Kanpur.
Associate Professor (*CS, SAT*)

Khalid Saeed

B.Sc.Eng., UET, Lahore; M.Eng., AIT;
Ph.D., MIT.
Professor (*IPM, SCE; RSGIS, SERD*)

Vilas M. Salokhe

B.Tech., Rahuri; M.Eng., Udaipur;
D.Eng., AIT.
Associate Professor (*AMM, SERD*)

William Savage, Jr.

B.S.Eng., Texas A&M; M.A., Hawaii.
Associate Professor (*CLET*)

Sununtar Setboonsarng

B.Sc. Chulalongkorn; M.S., Hawaii;
M.A., Yale; Ph.D., Hawaii (Manoa).
Assistant Professor (*AT, SERD*)

Nawaz Sharif

B.Sc., BUET; M.Eng. Adm., George Washington;
Ph.D., Texas A & M.
Chair Professor (*MOT, SOM*)

A.B. Sharma

B.Sc., Newcastle-upon-Tyne, UK;
Lic. Tech., D.Tech., Helsinki.
Professor (*TC, SAT*)

Jonathan Shaw

LLB., London; Dip. Ed., Manchester.
Assistant Professor (*CLET*)

R.M. Shrestha

B.E., M.S.U., Baroda; B.L., Tribhuvan;
M.Eng., D.Eng., AIT.
Associate Professor (*ECP, SERD*)

Gajendra Singh

B.Sc. A.E., Pantnagar; M.S., Rutgers;
Ph.D., California (Davis).
Professor (*AMM, SERD*)

Mark Speece

Ph.D., Univ. of Washington, USA.
Associate Professor (*MOT, IB, SOM*)

Willem F. Stevens

B.Sc., M.Sc., Ph.D., State Univ.,
Leyden, the Netherlands.
Professor, (*BPT, SERD*)

Uwe Stoll

Dip.Ing., Technical Univ. of Darmstadt;
Dr.Ing., Univ. of Bochum.
Associate Professor (*ETM, WWE, SERD*)

Robert D. Stueart

B.A., Southern Arkansas;
M.S.L., Louisiana State; Ph.D., Pittsburgh.
Professor (*IM, SAT, CLAIR*)

Mitsutaka Sugimoto

B.Eng., M.Eng., D.Eng., Tokyo.
Associate Professor (*SE, SCE*)

Tri B. Suselo

Drs., Bandung Inst. of Tech.;
Ph.D., U.S.T.L., Montpellier.
Assistant Professor (*NRC, SERD*)

Fredric W. Swierczek

B.A., Temple; M.A.(Econ.), Ph. D., Pittsburgh.
Associate Professor (*MOT, IB, SOM*)

M.T. Tabucanon

B.S.E.E., B.S.M.E., Cebu Inst. of Tech.;
M.Eng., D.Eng., AIT.
Professor (*ISE, SAT*)

Kenzo Takahashi

B.S., Kanazawa; Ph.D., Tokyo Inst. of Tech.
Research Professor (*TC, SAT*)

Yasushi Takeyama

B.Eng., M.Eng., D.Eng., Tohoku Univ.
Associate Professor (*TE, SCE*)

Yordphol Tanaboriboon

B.S., M.S., Oklahoma State;
Ph.D., Virginia Polytechnic Institute and State.
Associate Professor (*TE, SCE*)

John C.S. Tang

B.Sc. (Eng.), M.Sc., Ph.D., Univ. of Florida.
Associate Professor (*IB, SOM*)

Gopal B. Thapa

B.A., M.A. (Geography), Tribhuwan Univ.;
M.Sc., D.Tech.Sc., AIT.
Assistant Professor (*RRDP, SERD*)

Myint Myint Thein

B.A., Yangon; M.A., Warwick, UK.
Assistant Professor (*CLET*)

Tawatchai Tingsanchali

B.Eng., Chulalongkorn; M.Eng., D.Eng., AIT.
Professor (*RCE, SCE*)

Chindakorn Tuchinda

B.Eng., Chulalongkorn;
M.S., Ph.D., Oklahoma State.
Assistant Professor (*TC, SAT*)

Teruyuki Umita

B.Eng., M.Eng., Tohoku; D.Eng., Kyushu.
Associate Professor (*WWE, SERD*)

Selawa H. Upasena

B.Sc., M.Sc., Moscow; Ph.D., Novisad.
Associate Professor (*APM, SERD*)

C. Visvanathan

B.Tech., IIT Madras; M.Eng., AIT;
Ph.D., National Polytech, Toulouse.
Associate Professor (*ETM, WWE, SERD*)

Suphat Vongvisessomjai

B.Eng., Chulalongkorn; M.Eng., D.Eng., AIT.
Professor (*RCE, SCE*)

Pierre Walter

B.S., M.A., Ph.D., Wisconsin.
Assistant Professor (*CLET*)

Pennung Warnitchai

B.Eng. (Hons.), Chulalongkorn;
M.Eng., D.Eng., Univ. of Tokyo.
Associate Professor (*STE, SCE*)

Karl E. Weber

M.A., Dr.Phil., Heidelberg.
Professor (*RRDP, SERD*)

Sutat Weesakul

B.Eng., Chulalongkorn; M.Eng., D.Eng., AIT.
Assistant Professor (*RCE, SCE*)

Rick L. Whisenand

B.A., M.A., Oklahoma State.
Assistant Professor (*CLET*)

B.W.E. Wickramanayake

B.A., Ceylon; M.A., Dhaka; Dip.Econ.,
East Anglia; Dr.Econ., EUR, Rotterdam.
Associate Professor (*RRDP, SERD*)

Anil C. Wijeyewickrema

B.Sc., Univ. of Moratuwa; M.Eng., AIT;
Ph.D., Northwestern.
Associate Professor (*STE, SCE*)

Vilas Wuwongse

B.Eng., M.Eng., D.Eng., Tokyo Inst. of Tech.
Associate Professor (*CS, SAT*)

A. Yakupitiyage

B.Sc., Sri Lanka; M.Sc., AIT; Ph.D., Stirling.
Associate Professor (*AT, SERD*)

Yap Kioe-Sheng

B.A., M.A., Ph.D., Amsterdam.
Professor (*UPLHD, SERD*)

Jian-Guo Zhang

B.Sc., Shenyang Inst. of Aeronautical Tech.;
M.Sc., Beijing Univ. of Aeronautics & Astronautics;
Ph.D., Parma, Italy.
Assistant Professor (*TC, SAT*)

ASSOCIATED FACULTY**SCHOOL OF ADVANCED TECHNOLOGIES****Ouen Pin Ngern**

B.Ed., M.Ed., Srinakharinwirot Univ.;
M.S., Chulalongkorn; M.S., Oregon Univ.;
Ph.D., Univ. of Nebraska.
(also associated with SOM)

Somchet Thinaphong

B.Eng., Tasmania; M.Eng., D.Eng., AIT.

Pisal Yenradee

B.Eng., KMIT-North Bangkok;
M.Eng., D.Eng., AIT.

SCHOOL OF CIVIL ENGINEERING**Taweep Chaisomphob**

B.Eng., Chulalongkorn;
M.Eng., D.Eng., Univ. of Tokyo.

Hiroshi Mutsuyoshi

B.Eng., Nagoya Inst. of Tech.;
M.Eng., D.Eng., Tokyo.

Guna Nidhi Paudyal

B.E., Rajasthan; M.Eng., D.Eng., AIT.

Vachi Ramnarong

B.Sc., Chulalongkorn;
Ph.D., Uppsala Univ., Sweden.

Samart Ratchapolsitte

B.Eng., Chiang Mai; M.Eng., AIT;
D.Eng., Univ. of Japan.

Tian Ho Seah

B.Sc., London; D.Sc., MIT.

Appendix

Paul G. Sjoerdsma
M.Sc., Univ. of Utrecht.

Somnuk Tangtermsirikul
B.Eng., Chulalongkorn;
M.Eng., D.Eng., Univ. of Tokyo.

Nattawuth Udayasen
B.Eng., Khon Kaen; M.Eng., AIT;
Ph.D., Waterloo, Canada.

Kamol Vajarasathira
B.Eng., Norwich; M.S.C.E., Purdue;
Ph.D., Utah.

Koonton Yamploy
B.Eng., Kasetsart; M.Eng., AIT;
Ph.D., Innsbruck.

SCHOOL OF ENVIRONMENT, RESOURCES AND DEVELOPMENT

Bengt L. Ageros
Dip. C.S.W., Stockholm; M.S.W., Miami;
M.Sc., North Carolina; Ph.D., Pennsylvania.

Sanit Aksornkoae
B.Sc., M.S., Kasetsart; Ph.D., Michigan State.

Bengt-Erik Bengtsson
B.Sc., M.Sc., Ph.D., Umea, Sweden.

Sompol Boonthanon
B.Sc., Kasetsart; M.Sc., D.Tech.Sc., AIT.

Suwalee Chandrakrachang
B.Sc., Chulalongkorn;
M.Sc., Columbia Univ., New York.

Bertrand Chateau
Eng., DEA, Ph.D., Grenoble.

Supranee Chinabut
B.S., Kasetsart; M.Sc., Auburn; Ph.D., Stirling.

Mohammed Z. Hussain
B.Sc., Peshawar; M.Sc., M.Phil., Ph.D., Yale.

Sarath G. Ilangantileke
B.Sc., Ceylon; M.S., Ph.D., Michigan State.

Attawut Impoonsup
B.Sc., M.Sc., Mahidol; Ph.D. Queensland.

Kitti Interanont
B.Eng., Chulalongkorn; M.Sc., Houston;
Ph.D., Texas Tech.

Thanwa Jitsanguan
B.Sc., Kasetsart; M.A., Thammasat;
Ph.D., Univ. of Hawaii.

Steffen Johnsen
M.S., Univ. of Copenhagen;
Ph.D., Univ. of California (Davis).

Kungwan Juntarashote
B.S., Kasetsart; M.S., NIDA; Ph.D., Nihon Univ.

Bruno Lapillonne
Eng., INPG, DEA, Ph.D., Grenoble.

Jean Claude Mora
Ph.D., INP, Toulouse.

Tanya Niyamapa
B.Eng. (Agr.), Khon Kaen;
M.Eng., AIT; Ph.D., Kyoto.

Christopher Oates
B.Sc., M.Sc., Ph.D., Nat. Univ. of Singapore.

Sumitra Poovarodom
B.Sc., Khon Kaen; M.Sc., AIT; Ph.D., Rutgers.

S. Ramaswamy
B.Sc., M.Sc. (Ag.), Madras Univ.;
Ph.D., London Univ.

Laurent Schwab
CAPES, Ph.D., Paris 1.

Duong Duc Tien
B.Sc., M.Sc., Hanoi Univ.;
D.Sc., Univ. of Moscow.

Boonjit Titapiwatanakun
B.Econ., M.Econ., Thammasat;
M.B.A., Ph.D., Minnesota.

Sornthep Tumwasorn
B.S., M.S., Kasetsart; Ph.D., Florida.

Kamol Vajarasathira
B.Eng., Norwich; M.S.C.E., Purdue;
Ph.D., Utah.

AFFILIATED FACULTY

SCHOOL OF ADVANCED TECHNOLOGIES

Charoon Chirapaisarnkul
B.Sc., B.Eng., Ph.D., New South Wales.

Regino L. Gonzales, Jr.
B.S.C.E., Cebu Inst. of Tech.; M.Eng., AIT.

Joost Duflo
M.Eng. (Arch.), M.Eng. (Mech.);
Catholic Univ. of Leuven.

Raimo Kolkki
M.Tech., Helsinki Inst. of Tech.

Risto Tarjanne
M.S., Licentiate of Tech.;
D.Tech., Helsinki Univ. of Technology.

SCHOOL OF CIVIL ENGINEERING

S. P. Gupta
B.Sc., Birla Inst. of Tech;
M.C.E., Ph.D., Brigham Young.

S.A. Nielsen
M.Sc., Tech. Univ. of Denmark.

Pushpa Raj Onta
B.Tech., IIT (Madras); M.Eng., D.Eng., AIT.

SCHOOL OF ENVIRONMENT, RESOURCES AND DEVELOPMENT

Kiran K. Bhattarai
B.Sc., Punjab; M.S., Hawaii; D. Eng., AIT.

Kamtorn Kaewpaitoon
B.S., M.S., Kasetsart; D.Tech.Sc., AIT.

Robert Mather
B.Sc. (Hons.), Univ. of London;
Ph.D., Univ. of Cambridge.

Md. A. Quader Miah
B.Sc.Eng., Dhaka; M.Eng., D.Eng., AIT.

Yongtanit Pimonsathean
B.Arch. (Hons.), Chulalongkorn;
M.Sc., AIT; D.Eng., Tokyo.

Soparth Pongquan
B.Sc. (Hons.), Chiang Mai; M.Sc., AIT;
Doctorandus, Leiden; Dr., Wageningen.

Lokendra P. Poudyal
B.Com., M.A. (Econ.), B.L., Tribhuvan Univ.,
Nepal; M.Sc., D.Tech.Sc., AIT.

Robert L.G. Schumann
B.Sc., Polytechnic of Central London.

James P. Szyper

B.Sc., Wisconsin; M.S., Ph.D., Hawaii.

Sejal Worah

B.Sc., St. Xavier's College, India;
M.S., State Univ. of New York, USA;
Ph.D., Univ. of Poona, India.

SCHOOL OF MANAGEMENT**K. Harigopal**

M.A., M.Ed., Osmania; Ph.D., Andhra.

VISITING FACULTY**SCHOOL OF ADVANCED TECHNOLOGIES****Hugo Pastijn**

B.Eng., M.Eng., Royal Military Academy,
Brussels; M.Eng., Catholic Univ. of Leuven.

Qi Yulu

B.Sc., M.Sc., Ph.D. (Equiv.),
Univ. of Science and Technology of China.

SCHOOL OF CIVIL ENGINEERING**Keizo Baba**

B.Eng., Tokyo; M.S., Penn. State;
Ph.D., Tokyo.

Sung Wan Hong

B.S., Seoul; M.S., Ph.D., Illinois.

Byoung Nam Lee

B.A., Yonsei; M.S., Ph.D.,
Korea Advanced Inst. of Sci. & Tech.

Sheng Liang

B.S., National Chung Hsing Univ.;
M.S., Univ. of Hawaii; Ph.D., Univ. of Florida.

J. L. Van Orsmael

B.Sc., M.Sc., Ph.D., Catholic Univ. of Leuven.

**SCHOOL OF ENVIRONMENT,
RESOURCES AND DEVELOPMENT****Stig G. Andersson**

M.Sc., Ph.D., Royal Inst. of Tech., Stockholm.

Juan B. Heredia

MBA, Intl. Inst. for Management Development,
Lausanne; Dipl. Eng., Swiss Federal Inst. of
Tech., Lausanne.

Stephen A. Romano

B.A., Univ. of Massachusetts;
M.S., Univ. of Wisconsin.

Vinod K. Tewari

M.A., Ph.D., Univ. of Delhi.

Richard L. Tinsley

B.A., Lafayette College;
M.S., Univ. of Maryland; Ph.D., Univ. of Florida.

Jean-Claude Vincent

B.Sc., M.Sc., Ing. (Al Gx-Belgium).

Byung-Soo Yang

B.S., Konkuk; M.Sc., AIT; Ph.D., Dong-A.

Cun Yi Yu

B.Eng., M.Eng., Xian Jiaotong Univ., China;
Ph.D., Royal Inst. of Tech., Stockholm.

SCHOOL OF MANAGEMENT**Urs Bumbacher**

B.A., M.A., Ph.D., Univ. of Basel, Switzerland.

Ellen Hertzberg

B.A., Oslo, Norway; B.Sc., Bremen, Germany;
M.Sc., Ph.D., Strathclyde, UK.

Lalit M. Johri

B.Sc., M.Sc. (Physics), M.B.A., Ph.D.
(Business Policy & Strategic Management),
Univ. of Delhi.

Chulwon Lee

B.S., Seoul National Univ.;
M.S., Ph.D., KAIST, Korea.

I.M. Pandey

M.Com., Ph.D., Univ. of Delhi.

AT LARGE**J. van Winden**

PBNA, Electronic Engineering, Netherlands.

Abbreviations

SAT	School of Advanced Technologies
CS	Computer Science
IM	Information Management
ISE	Industrial Systems Engineering
TC	Telecommunications

SCE School of Civil Engineering

CEM	Construction Engineering and Management
EAG	Engineering and Applied Geology
IPM	Infrastructure Planning and Management
IREM	Irrigation Engineering and Management
RCE	Riverine and Coastal Engineering
SE	Soil Engineering
STE	Structural Engineering
TE	Transportation Engineering
WRD	Water Resources Development

**SERD School of Environment,
Resources and Development**

AMM	Agricultural Machinery and Management
APM	Agricultural Planning and Management
AT	Aquaculture Technology
BPT	Bioprocess Technology
EEP	Energy Economics and Planning
EPSM	Energy Power Systems Management
ET	Energy Technology
ETM	Environmental Technology and Management
GDS	Gender and Development Studies
NRC	Natural Resource Conservation
PFPE	Postharvest and Food Process Engineering
RRDP	Regional and Rural Development Planning
RSGIS	Remote Sensing and Geographical Information Systems
UPLHD	Urban Planning, Land and Housing Development
WWE	Water and Wastewater Engineering

SOM School of Management

MOT	Management of Technology
IB	International Business

**CLAIR Center for Library and
Information Resources**

CLET	Center for Language and Educational Technology
------	--

1995 BOARD OF TRUSTEES

EC **H.E. Mr. C. Christian W. Adams**
CMG (1997)
Ambassador Extraordinary and
Plenipotentiary
The British Embassy
Bangkok, Thailand

SRC **Mr. Robert C. Bodden** (1997)
President
AIT Foundation, Inc.
USA

BFC **Mr. Pin Chakkaphak** (1997)
President and Director
Finance One Public Co. Ltd.
Bangkok, Thailand

Mr. Arthur Y. Chen (1998)
Vice Chairman
Research Development and Evaluation
Commission of the Executive Yuan
Chinese Taipei

Dr. Chow Chowkwanyun (1997)
General Manager
Education and Public Welfare
Foundation
Bangkok, Thailand

Dr. Kim Chung-Gil (1997)
Chairman
Appeal Commission for Teachers
Ministry of Education
Seoul, Korea

EC **Dr. Saisuree Chutikul** (1998)
Advisor (CIDA) on Women, Children,
Youth, Education and Social
Development
Office of the Permanent Secretary
Prime Minister's Office
Royal Thai Government
Bangkok, Thailand

EC **Prof. Dr. Hans Günter
Danielmeyer** (1997)
Senior Vice President
Corporate Research and Development
Department
Siemens AG
Germany

Mr. John Gunther Dean (1997)
Former US Ambassador to Thailand
Paris, France

EC **Mrs. Chuanpit Dhamasiri**
(*Ex-officio*)
PPC AITAA President
NC Governor
Metropolitan Waterworks Authority
Bangkok, Thailand

H.E. Mr. Willy Johan Fredriksen
(1998)
Ambassador Extraordinary and
Plenipotentiary
The Royal Norwegian Embassy
Bangkok, Thailand

EC **Prof. D. W. George, AO** (1996)
PPC *Vice Chairperson*
SRC Former Vice-Chancellor
University of Newcastle
NSW, Australia

HDC **H.E. Mr. Blaise Godet** (1998)
EC Ambassador Extraordinary and
Plenipotentiary
The Embassy of Switzerland
Bangkok, Thailand

EC **H.E. Ms. Eva Heckscher** (1998)
Ambassador Extraordinary and
Plenipotentiary
The Swedish Embassy
Bangkok, Thailand

PPC **Prof. Wilhelm Hill** (1998)
Head, Strategic Studies,
Research and Publications Unit,
University of Basel
Switzerland

EC **The Hon. Cheng Hon-Kwan, OBE**
(1996)
Member
Executive and Legislative Council
Hong Kong

Dr. John A. Hrones (*Life Member*)
Provost Emeritus
Case Institute of Technology
USA

H.E. Mr. Tauno Kaaria (1998)
Ambassador Extraordinary and
Plenipotentiary
The Embassy of Finland
Bangkok, Thailand

EC **Prof. Pisidhi Karasudhi** (*Ex-officio*)
PPC Vice President for Development
BFC Asian Institute of Technology
NC

M.L. Birabhongse Kasemsri (1998)
His Majesty's Principal Private
Secretary
Grand Palace
Bangkok, Thailand

FRC **Prof. S. K. Khanna** (1998)
Chairman
All India Council for Technical
Education
New Delhi, India

EC **Dr. Thanat Khoman** (1996)
PPC *Chairperson*
HDC Former Deputy Prime Minister
BFC Royal Thai Government
NC Bangkok, Thailand

Mr. Kiyooki Kikuchi (1998)
Senior Advisor
Matsushita Electric Industrial Co., Ltd.
Tokyo, Japan

Dr. Jeffrey L.S. Koo (1997)
Chairman and Chief Executive Officer
China Trust Co., Ltd.
Chinese Taipei

EC **Prof. B. Krol** (1997)
PPC Professor Emeritus
SRC University of Utrecht
FRC Technology of Food of Animal
Origin Department
The Netherlands

H.E. Mr. Bernard Lauwaert (1997)
Ambassador Extraordinary and
Plenipotentiary
The Embassy of Belgium
Bangkok, Thailand

Dr. Nguyen Huu Le (1996)
Director, Global R&D Planning
Bell-Northern Research Ltd.
Ottawa, Canada

SRC **Dr. Sang-Soo Lee** (1996)
President
Korea Advanced Institute of Science
and Technology
Seoul, Korea

Dr. Somsak Leeswadtrakul (1998)
Owner and shareholder of business
enterprises
SSP Group of Companies
Bangkok, Thailand

Dr. Berthold Leibinger (1998)
President
TRUMPF GmbH and Co.
Germany

Dr. Ram Sharan Mahat (1996)
Vice Chairman
National Planning Commission of
Nepal
Kathmandu, Nepal

Mr. Mian Amer Mahmood (1997)
Chairman, Punjab Group of Colleges
Lahore, Pakistan

- Dr. Oscar B. Mapua** (*Life Member*)
President
Mapua Institute of Technology
Manila, Philippines
- EC **Dr. Sukum Navapan** (1997)
BFC Chairman
Navatane Group of Companies
Bangkok, Thailand
- EC **Prof. Alastair M. North** (*Ex-officio*)
PPC President
HDC Asian Institute of Technology
BFC
NC
- EC **H.E. Mr. Manfred G. von Nostitz** (1997)
Ambassador Extraordinary and
Plenipotentiary
The Canadian Embassy
Bangkok, Thailand
- EC **H.E. Mr. Takashi Onda** (1997)
BFC Ambassador Extraordinary and
Plenipotentiary
NC The Embassy of Japan
Bangkok, Thailand
- EC **Prof. Ricardo P. Pama** (*Ex-officio*)
PPC Vice President for Academic Affairs
SRC Asian Institute of Technology
- EC **H.E. Mr. Anand Panyarachun** (1998)
Former Prime Minister of Thailand
Royal Thai Government
Bangkok, Thailand
- Mr. Earl N. Phillips, Jr.** (1997)
President
First Factors Corporation
North Carolina, USA
- PPC **Dr. Wolf Preuss** (1997)
Deputy Director General (Asia)
Federal Ministry for Economic
Cooperation
Germany
- EC **H.E. Mr. Jürgen Reimers** (1997)
BFC Ambassador Extraordinary and
Plenipotentiary
NC The Royal Danish Embassy
Bangkok, Thailand
- EC **Prof. Khalid Saeed** (*Ex-officio*)
PPC Faculty Representative
FRC Asian Institute of Technology
Bangkok, Thailand
- EC **Prof. Hiroyoshi Shi-igai** (1997)
PPC Professor
FRC Institute of Engineering Mechanics
SRC University of Tsukuba, Japan
- H.E. Dr. Dieter Siemes** (1998)
Ambassador Extraordinary
and Plenipotentiary
The Embassy of Germany
Bangkok, Thailand
- SRC **Dr. Soedjatmiko** (1996)
Director
Institute of Agricultural Engineering
Ministry of Agriculture
Indonesia
- Mr. Chatri Sophonpanich** (1997)
Executive Chairman of the Board
Bangkok Bank Ltd.
Bangkok, Thailand
- SRC **Mr. Jean-Marcel Soulier** (1998)
Chairman of the French Steering
Committee for AIT in Paris
Landes, France
- PPC **Prof. Charas Suwanwela** (1997)
BFC President
Chulalongkorn University
Bangkok, Thailand
- Mr. Yoshiro Takasaki** (1997)
Chairman
Toyo Seikan Kaisha Ltd.
Tokyo, Japan
- Dr. Aran Thamano** (1996)
Former Permanent Secretary
Ministry of Finance
Royal Thai Government
Bangkok, Thailand
- EC **Dr. Vichai Tunsiri** (1997)
Former Secretary-General
Office of the National Education
Commission
Prime Minister's Office
Royal Thai Government
Bangkok, Thailand
- EC **Dr. Phaichitr Uathavikul** (1997)
Chairman
Executive Board of Directors
Thailand Environment Institute
Bangkok, Thailand
- EC **Dr. Snob Unakul** (1997)
Chairman
The Bank of Asia Public Co. Ltd.
Bangkok, Thailand
- Dr. Puey Ungphakorn**
(*Life Member*)
Former Governor
Bank of Thailand
London, UK
- FRC **Prof. Zhong Lie Wang** (1997)
Director, Office of the ADCSC
State Education Commission
Beijing, People's Republic of China
- Secretary:**
Dr. Roger A. Hawkey
Asian Institute of Technology

Note:

- () End of current term of office
EC Executive Committee
PPC Policy and Planning Committee
BFC Board Finance Committee
FRC Faculty Relations Committee
SRC Student Relations Committee
NC Nominating Committee
HDC Honorary Degrees Committee

December 1995

**TO THE BOARD OF TRUSTEES
ASIAN INSTITUTE OF TECHNOLOGY**

We have examined the balance sheets of the Asian Institute of Technology as at 30th June, 1995 and 1994, the statements of revenues and expenditures of unrestricted current fund and restricted fund-general and the related statements of changes in fund balances for the years then ended. Our examinations were made in accordance with generally accepted auditing standards and accordingly included such tests of the accounting records and such other auditing procedures as we considered necessary in the circumstances.

In our opinion, the aforementioned financial statements present fairly the financial position of the Asian Institute of Technology as at 30th June, 1995 and 1994, the revenues and expenditures of unrestricted current fund and restricted fund-general and changes in fund balances for the years then ended, in conformity with generally accepted accounting principles appropriate for a non-profit organization as set out in Note 1 to the financial statements, applied on a consistent basis.



Ernst & Young
Bangkok
21 September 1995

**NOTE 1 -
SUMMARY OF SIGNIFICANT ACCOUNTING POLICIES**

1.1 Fund accounting

To ensure observance of limitations and restrictions placed on the use of available resources, the Institute's books of account are maintained in accordance with the principles of "fund accounting". Under this procedure, resources are classified for accounting and reporting purposes under different funds intended for specific activities or objectives. Within each fund group, distinction is made between fund balances that are restricted by outside sources and unrestricted funds which are allocated by the management to support specific purposes. The Board of Trustees exercises full control over the use of unrestricted fund.

Investment incomes and unrestricted revenues are considered as income in the unrestricted current fund. Investment incomes from endowments, general reserve and capital funds are retained in the respective funds.

Restricted contributions, grants, appropriations and other restricted resources are accounted for in specific restricted funds.

1.2 Accrual basis

The financial statements have been prepared on an accrual basis except for depreciation of fixed assets and contributions.

Depreciation of fixed assets is not recorded in accordance with the fund accounting concept.

Contributions are recognized on a cash basis due to uncertainties surrounding their receipt, which is at the discretion of donors.

The statement of revenues and expenditures of the unrestricted current fund and restricted general fund is a statement of financial activities of the current fund in relation to the current reporting period. It does not purport to present the results of operations for the period as would an earnings statement.

1.3 Contributions in kind

Contributions in kind are reflected in the financial statements on a fair value basis at the time of receipt.

1.4 Inventories

Inventories are valued at the lower of cost (first-in, first-out basis) and net realizable value.

1.5 Fixed assets

Fixed assets are stated at cost at the time of acquisition or fair value at the time of donation in the case of contributions in kind.

1.6 Foreign currencies

Exchange rates adopted:-

Foreign currency transactions during the year - at the rates ruling on the transaction dates.

Assets and liabilities in foreign currency outstanding on the balance sheet date - at the rates ruling on the balance sheet dates.

Exchange gains and losses are included in determining earnings.

NOTE 2 - INVESTMENTS

These consist of:

	1995 BAHT	1994 BAHT
Time deposits with banks	177,578,841	163,450,375
Deposits with finance companies	283,290,877	236,766,952
Debenture	2,500,000	-
Warrant	1,000,000	-
	<u>464,369,718</u>	<u>400,217,327</u>

The investments of each fund as at 30th June, 1995 and 1994 are as follows:

	1995 BAHT	1994 BAHT
Unrestricted current fund	21,343,805	17,764,737
Restricted fund		
General	69,238,890	54,505,705
Endowment	65,175,013	63,061,047
General reserve	131,432,906	140,761,755
	265,846,809	258,328,507
Capital fund		
Liquid assets	75,794,439	46,515,062
Repairs and maintenance reserve	1,203,302	2,883,127
	76,997,741	49,398,189
Sponsored program fund	31,015,751	28,114,612
Agency fund	69,165,612	46,611,282
	<u>464,369,718</u>	<u>400,217,327</u>

Time deposits with banks amounting to Baht 4.4 million (1994: Baht 4.2 million) of the restricted general reserve fund have been pledged with a bank as collateral against outstanding letter of guarantee issued by the bank (see Note 9).

Appendix

NOTE 3 - ADVANCE DUTIES AND TAXES

These represent advance duties and taxes payments to the Government of Thailand, which will subsequently be reimbursed to the Institute in accordance with the letter of the Office of the Secretary-General to the Cabinet dated 16th July 1985. The reimbursement of the advance is for non-Thai faculty and staff and is subject to the annual government budget of the Government of Thailand.

The details of advance duties and taxes as at 30th June 1995 and 1994 are as follows:

	1995 BAHT	1994 BAHT
Employees personal income tax	9,533,884	10,501,449
Import and tax duty		
-Automobile	526,249	577,799
-Wine and spirit	174,082	613,590
	<u>10,234,215</u>	<u>11,692,838</u>

NOTE 4 - FIXED ASSETS

	1995 BAHT	1994 BAHT
Campus development	24,768,452	24,311,645
Buildings	715,466,242	689,992,002
Furniture and equipment	742,081,710	681,784,479
Library acquisitions	98,365,928	90,282,806
Construction in progress	9,027,027	21,372,810
	<u>1,589,709,359</u>	<u>1,507,743,742</u>

Depreciation for the year amounting to Baht 75,494,006 (1994: Baht 69,482,194) has not been recorded in accordance with the fund accounting concept.

NOTE 5 - CONTRIBUTIONS IN KIND

These represent services donated to the Institute in the form of faculty or staff secondments, the estimated value of which is based on the Institute's professional salary scale. The amounts are recognized as revenues and expenditures in the restricted general fund.

NOTE 6 - FUND BALANCES

	1995 BAHT	1994 BAHT
Restricted fund		
General	18,769,362	21,069,944
Endowment	65,230,319	63,099,490
General reserve	230,847,687	229,629,173
	<u>314,847,368</u>	<u>313,798,607</u>
Capital Fund		
Fixed assets	1,589,709,359	1,507,743,742
Liquid assets -		
Unallocated	16,398,979	15,971,077
Liquid assets -		
Allocated	59,718,231	39,126,387
Repairs and maintenance reserve	1,203,302	2,883,126
	<u>1,667,029,871</u>	<u>1,565,724,332</u>

NOTE 7 - AIT INSURED SAVINGS FUND

The insured savings fund scheme is supported jointly by the Institute and the staff, with the staff contributing 5% of basic salary and the Institute 10%. The fund is managed by HHL Employee Benefits Limited. Withdrawals and redemptions of contributions and related earnings are based on the rules of the insured savings fund.

NOTE 8 - CAPITAL COMMITMENTS

As at 30th June 1995, the Institute had capital commitments in respect of building construction amounting to approximately Baht 23.1 million (1994: Baht 5.6 million).

NOTE 9 - BANK GUARANTEES

As at 30th June 1995, there were outstanding bank guarantees of approximately Baht 4.4 million (1994: Baht 4.2 million) issued by a bank on the Institute's behalf, in respect of certain performance bonds required in the normal course of activities carried out by the Institute.

**ASIAN INSTITUTE OF TECHNOLOGY
BALANCE SHEETS
AS AT 30th JUNE, 1995 AND 1994**

	Note	Unrestricted Current Fund		Restricted Fund		Capital Fund		Sponsored Program Fund		Agency Fund		Total	
		1995	1994	1995	1994	1995	1994	1995	1994	1995	1994	1995	1994
		BAHT	BAHT	BAHT	BAHT	BAHT	BAHT	BAHT	BAHT	BAHT	BAHT	BAHT	BAHT
ASSETS													
Cash at banks		6,151,996	14,182,305	52,542,621	55,924,268	2,470,472	15,595,450	44,061,344	22,384,863	53,933,962	34,020,507	159,160,395	142,107,393
Investments	2	21,343,805	17,764,737	265,846,809	258,328,507	76,997,741	49,398,189	31,015,751	28,114,612	69,165,612	46,611,282	464,369,718	400,217,327
Advance duties and taxes	3	10,234,215	11,692,838	-	-	-	-	-	-	-	-	10,234,215	11,692,838
Accounts receivable and accrued income		3,414,503	2,779,177	4,025,598	6,219,026	388,940	143,733	3,640,821	3,432,321	1,164,833	511,257	12,634,695	13,085,514
Deposits		884,843	882,843	63,561	63,561	-	-	-	-	-	-	948,404	946,404
Inventories		-	-	797,167	1,081,265	-	-	-	-	-	-	797,167	1,081,265
Due from other funds		-	-	98,000,000	88,000,000	-	-	-	-	-	-	98,000,000	88,000,000
Fixed assets	4	-	-	-	-	1,589,709,359	1,507,743,742	-	-	-	-	1,589,709,359	1,507,743,742
TOTAL ASSETS		42,029,362	47,301,900	421,275,756	409,616,627	1,669,566,512	1,572,881,114	78,717,916	53,931,796	124,264,407	81,143,046	2,335,853,953	2,164,874,483
LIABILITIES AND FUND BALANCES													
LIABILITIES													
Accounts payable and accrued expenses		2,558,125	7,951,048	6,943,858	6,435,893	2,536,641	7,156,762	304,357	16,589,709	1,184,573	1,371,522	13,527,554	39,504,954
Deposits		956,522	836,137	1,484,530	1,382,127	-	-	-	-	-	-	2,441,052	2,218,264
Due to other funds		-	-	98,000,000	88,000,000	-	-	-	-	-	-	98,000,000	88,000,000
TOTAL LIABILITIES		3,514,647	8,787,185	106,428,388	95,818,020	2,536,641	7,156,762	304,357	16,589,709	1,184,573	1,371,522	113,968,606	129,723,218
FUND BALANCES	6	38,514,715	38,514,715	314,847,368	313,798,607	1,667,029,871	1,565,724,332	78,413,559	37,342,087	123,079,834	79,771,524	2,221,885,347	2,035,151,265
TOTAL LIABILITIES AND FUND BALANCES		42,029,362	47,301,900	421,275,756	409,616,627	1,669,566,512	1,572,881,114	78,717,916	53,931,796	124,264,407	81,143,046	2,335,853,953	2,164,874,483

The accompanying notes are an integral part of the financial statements.


PRESIDENT

ASIAN INSTITUTE OF TECHNOLOGY
STATEMENTS OF REVENUES AND EXPENDITURES – UNRESTRICTED CURRENT FUND AND RESTRICTED FUND – GENERAL
FOR THE YEARS ENDED 30th JUNE, 1995 AND 1994

	Unrestricted Fund		Restricted Fund-General		Total	
	1995 BAHT	1994 BAHT	1995 BAHT	1994 BAHT	1995 BAHT	1994 BAHT
REVENUES :						
Tuition and fees :						
Academic unit	194,404,288	196,634,812	-	-	194,404,288	196,634,812
Computer center	6,722,868	6,252,892	-	-	6,722,868	6,252,892
	201,127,156	202,887,704	-	-	201,127,156	202,887,704
Gifts and contributions :						
Cash	15,091,600	11,119,918	140,887,871	66,025,368	155,979,471	77,145,306
In kind (Note 5)	-	-	87,837,873	69,730,578	87,837,873	69,730,578
	15,091,600	11,119,918	228,725,744	135,755,966	243,817,344	146,875,884
Grants and contracts	24,130,743	18,334,378	11,217,017	10,802,888	35,347,760	29,137,266
Sales and services :						
Educational activities	-	-	46,865,275	96,794,985	46,865,275	96,794,985
Others	22,816	27,098	1,486,272	1,388,758	1,509,088	1,415,856
	22,816	27,098	48,351,547	98,183,743	48,374,363	98,210,841
Income from investments	19,461,276	14,619,920	-	-	19,461,276	14,619,920
Auxiliary services	-	-	104,747,475	81,974,284	104,747,475	81,974,284
Recovery of indirect costs	28,824,239	20,233,695	-	-	28,824,239	20,233,695
AIT sponsored programs	-	-	4,745,974	12,616,090	4,745,974	12,616,090
Physical plant support	-	-	27,999,152	25,235,949	27,999,152	25,235,949
Exchange stabilization	-	-	3,088,775	1,372,402	3,088,775	1,372,402
Miscellaneous	-	-	7,624,325	9,590,130	7,624,325	9,590,130
TOTAL REVENUES	288,657,830	267,222,713	437,100,009	375,532,058	725,757,839	642,754,771
EXPENDITURES :						
Salaries and associated costs :						
Cash	200,987,747	162,804,097	6,675,179	(840,596)	207,662,926	161,964,399
In kind (Note 5)	-	-	87,837,873	69,730,578	87,837,873	69,730,578
	200,987,747	162,804,097	94,513,052	68,889,980	295,500,799	231,694,977
Academic units operating costs	26,791,657	23,170,207	142,883,722	118,982,400	169,675,379	142,152,607
Student related costs	1,161,745	1,399,936	4,564,348	6,282,349	5,726,093	7,682,285
Administrative support costs	4,215,543	4,253,440	269,807	237,101	4,485,350	4,490,541
Capital purchases	14,967,763	9,257,663	(254,410)	3,174,404	14,713,353	12,432,067
Campus wide services	38,126,771	56,692,844	-	-	38,126,771	56,692,844
Physical plant support costs	-	-	47,239,754	35,514,487	47,239,754	35,514,487
AIT sponsored programs	-	-	14,837,728	10,843,795	14,837,728	10,843,795
Auxiliary services costs	-	-	85,399,960	66,665,263	85,399,960	66,665,263
Exchange stabilization	-	-	2,144,225	1,215,338	2,144,225	1,215,338
Other costs	-	-	47,802,402	36,869,683	47,802,402	36,869,683
TOTAL EXPENDITURES	286,251,226	257,579,087	439,400,591	348,674,798	725,651,817	606,253,885
EXCESS OF REVENUES OVER EXPENDITURES	2,406,604	9,643,626	(2,300,582)	26,857,260	106,102	36,500,886

The accompanying notes are an integral part of the financial statements.

ASIAN INSTITUTE OF TECHNOLOGY
STATEMENTS OF CHANGES IN FUND BALANCES
FOR THE YEAR ENDED 30th JUNE, 1995 (WITH COMPARATIVE TOTAL FOR 1994)

	CAPITAL FUND											
	RESTRICTED FUND						CAPITAL FUND					
	Unrestricted Current Fund	General	Endowment	General Reserve	Fixed Assets	Liquid Assets	Liquid Assets	Repairs and Maintenance Reserve	Sponsored Program Fund	Agency Fund	1995	1994
BAHT	BAHT	BAHT	BAHT	BAHT	BAHT	Unallocated	Allocated	BAHT	BAHT	BAHT	BAHT	BAHT
Balances, 1 July 1994 (Note 6)	38,514,715	21,069,944	63,099,490	229,629,173	1,507,743,742	15,971,077	39,126,387	2,883,126	37,342,087	79,771,524	2,035,151,265	1,945,046,708
Adjustments:												
Disposal of assets	-	-	-	-	(946,750)	-	-	-	-	-	(946,750)	(2,726,421)
Additions:												
Excess of revenues over expenditures (expenditure over revenues)	2,406,604	(2,300,582)	-	-	-	-	-	(2,883,126)	41,071,472	43,308,310	81,602,678	11,196,475
Investment income	-	-	1,245,829	18,070,411	-	-	-	-	-	-	19,316,240	14,726,917
Government grants and appropriations	-	-	1,050,000	-	-	-	24,397,530	-	-	-	25,447,530	27,456,236
Gain (loss) on rate of exchange	-	-	(165,000)	15,212	-	-	-	-	-	-	(149,788)	(130,204)
Miscellaneous income and contributions	-	-	-	-	-	4,704,900	68,890,771	-	-	-	73,595,671	20,741,166
Contribution in kind	-	-	-	-	-	-	8,504,356	-	-	-	8,504,356	12,721,264
Amount due from other fund	-	-	-	10,000,000	-	-	-	-	-	-	10,000,000	-
	40,921,319	18,769,362	65,290,319	257,714,796	1,506,796,992	20,675,977	140,919,044	-	78,413,559	123,079,834	2,252,521,202	2,029,032,141
Deductions:												
Inter-fund transfer from (to)												
- Unrestricted Current Fund	-	-	-	1,203,302	-	-	-	1,203,302	-	-	2,406,604	4,821,889
Salary supplement distribution	-	-	-	-	-	-	-	-	-	-	-	(4,821,737)
- Restricted Current Fund	(1,203,302)	-	-	-	-	-	-	-	-	-	(1,203,302)	-
- General Reserve	-	-	-	-	-	-	-	-	-	-	-	-
- Liquid Assets Capital Fund	-	-	-	(18,070,411)	-	-	-	-	-	-	(18,070,411)	(2,410,944)
- Allocated	-	-	-	-	-	-	-	-	-	-	(1,203,302)	(2,410,945)
- Repairs and Maintenance Reserve	-	-	-	-	-	-	-	-	-	-	-	-
Expenditures for plant facilities												
- Cash	-	-	-	-	82,912,367	-	(32,332,074)	-	-	-	50,580,293	79,520,448
- Kind	-	-	-	-	-	-	(8,504,356)	-	-	-	(8,504,356)	(12,721,264)
Other cost												
- General	-	-	-	-	-	(4,276,998)	(40,364,383)	-	-	-	(44,641,381)	(55,858,323)
- Amount due to other fund	-	-	-	(10,000,000)	-	-	-	-	-	-	(10,000,000)	-
	(2,406,604)	-	-	(26,867,109)	82,912,367	(4,276,998)	(81,200,813)	1,203,302	-	-	(30,635,855)	6,119,124
Balances, 30 June 1995 (Note 6)	38,514,715	18,769,362	65,290,319	230,847,687	1,589,709,359	16,398,979	59,718,231	1,203,302	78,413,559	123,079,834	2,221,885,347	2,035,151,265

The accompanying notes are an integral part of the financial statements.

Appendix

INSTITUTE ADMINISTRATION

SENIOR ADMINISTRATIVE OFFICERS

President	Prof. Alastair M. North
Vice President for Academic Affairs	Prof. Ricardo P. Pama
Vice President for Development	Prof. Pisidhi Karasudhi
Bursar	Mr. Edward Mayer
Academic Secretary	Dr. Roger Hawkey

DEANS OF SCHOOLS

Advanced Technologies	Prof. Mario T. Tabucanon
Civil Engineering	Prof. Prinya Nutalaya
Environment, Resources and Development	Prof. Karl E. Weber
	Prof. Chongrak Polprasert (Associate Dean)
Management	Prof. Jyoti P. Gupta

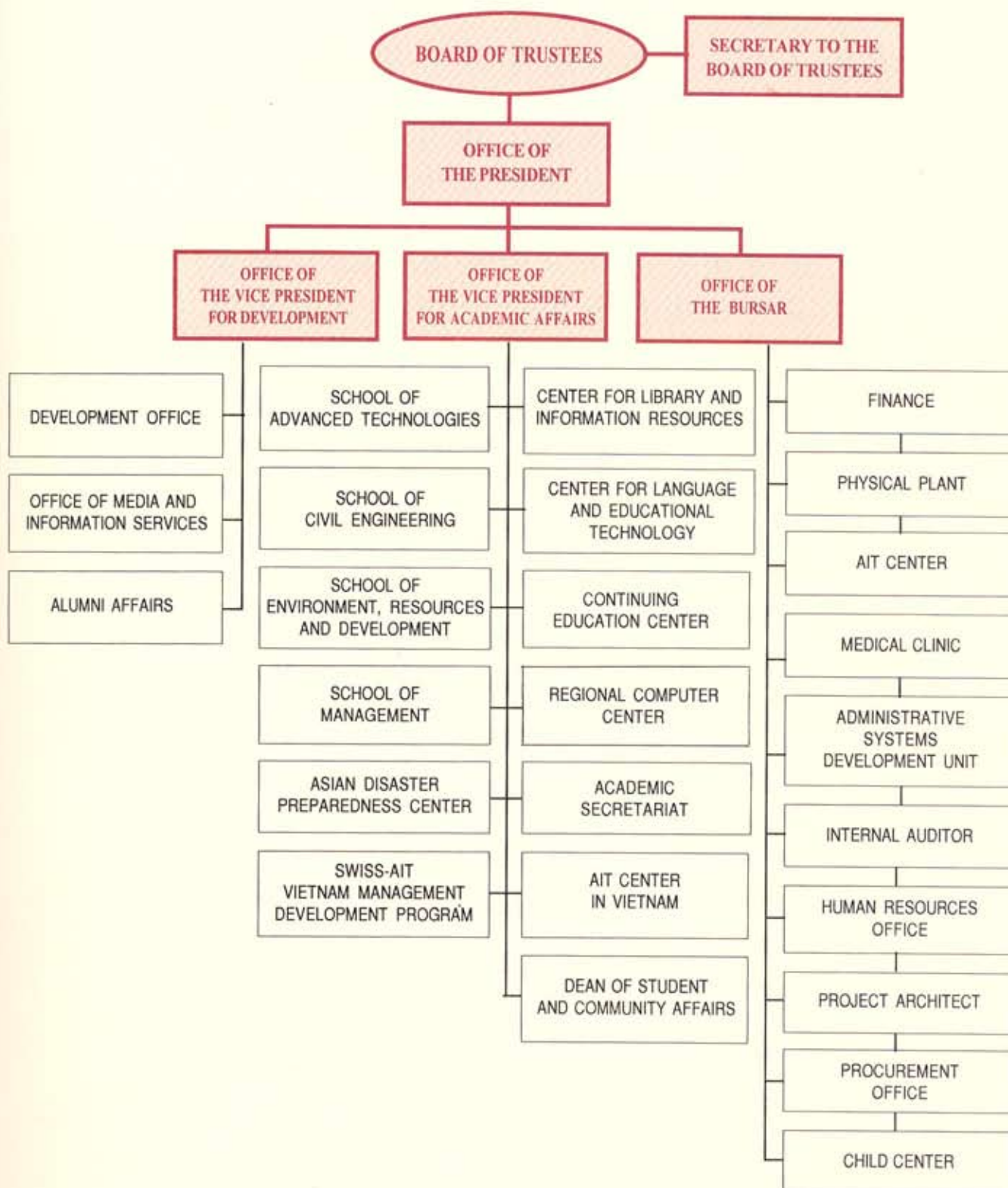
CENTER DIRECTORS

Asian Disaster Preparedness Center	Mr. John Barret
Continuing Education Center	Dr. Nicanor C. Austriaco
Center for Library and Information Resources	Prof. Robert D. Stueart
Regional Computer Center	Dr. Charoon Chirapaisarnkul
Center for Language and Educational Technology	Dr. Michael Connelly (Chairperson)
AIT Center in Vietnam	Dr. Risto Tarjanne

STUDENTS AFFAIRS

Dean of Student and Community Affairs	Dr. Anila Sadananda
Student Union President	Mr. Keshav Sondhi (Jan 1995-Sept. 1995)
	Mr. Abdul Samad Kazi (Sept. 1995-Apr. 1996)

ORGANIZATIONAL CHART



Abbreviations

ADB	Asian Development Bank
AEEMTRC	ASEAN-EC Energy Management Training and Research Center
APFWLD	Asia Pacific Forum on Women Law and Development
CEC	Commission of the European Communities
CIDSE	International Cooperation for Development and Solidarity
CUC	Canadian University Consortium
DANIDA	Danish International Development Assistance
EGAT	Electricity Generating Authority of Thailand
ESA	European Space Agency
ESCAP	Economic and Social Commission for Asia and the Pacific
FAO	Food and Agriculture Organization
ICIMOD	International Center for Integrated Mountain Development
IDRC	International Development and Research Center, Canada
ILO	International Labour Organization
IUCN	International Union for the Conservation of Nature
KEIDANREN	Federation of Economic Organizations, Japan
PADEK	Partnership for Development in Kampuchea
SEAMES	Southeast Asian Ministers of Education Secretariat
SIDA	Swedish International Development Cooperation Agency
UCLES	University of Cambridge Local Examinations Syndicate
UN	United Nations
UNCHS	United Nations Commission for Human Settlements
UNIDO	United Nations Industrial Development Organization
UNDP	United Nations Development Program
UNEP	United Nations Environment Program
UNEP EAP/AP	UNEP Environment Assessment Program for Asia and the Pacific
UNESCO	United Nations Educational, Scientific and Cultural Organization
UNICEF	United Nations Children's Fund
WHO	World Health Organization
WWF	Worldwide Fund for Nature

SCHOOLS, PROGRAMS, AND CENTERS IN THE INSTITUTE

SCHOOLS

SAT	School of Advanced Technologies
SCE	School of Civil Engineering
SERD	School of Environment, Resources and Development
SOM	School of Management

PROGRAMS

AFE	Agricultural and Food Engineering
CS	Computer Science
EE	Environmental Engineering
ET	Energy Technology
GTE	Geotechnical and Transportation Engineering
HSD	Human Settlements Development
ISE	Industrial Systems Engineering
IREM	Irrigation Engineering and Management
NR	Natural Resources
SEC	Structural Engineering and Construction
TC	Telecommunications
WRE	Water Resources Engineering

CENTERS

ADPC	Asian Disaster Preparedness Center
AITCV	AIT Center in Vietnam
CEC	Continuing Education Center
CLET	Center for Language and Educational Technology
CLAIR	Center for Library and Information Resources
RCC	Regional Computer Center

BUILDING THE NEW WORLD



ASIAN INSTITUTE OF TECHNOLOGY

Under the guidance of a world class faculty, a new generation of promising young men and women are pursuing post-graduate education at AIT to cope with the managerial and technological challenges in the coming decades. AIT's academic portfolio covers infrastructure engineering, agricultural and natural resource engineering, management and planning, and manufacturing systems engineering.

AIT offers to selected students

- an internationally recognized faculty from various science and engineering disciplines
- a multinational student body
- interaction with outstanding Asian, European and North American universities
- first-hand research experience of real-life development problems in the world's fastest growing region
- the opportunity to participate in lifelong professional networks with an international community of AIT faculty and alumni

For further details, please contact

Academic Secretariat
Asian Institute of Technology
P.O. Box 2754
Bangkok 10501, Thailand
Cable: AIT Bangkok
Telex: 84276 AIT TH
Fax: (66)(2) 516-2126
Tel: 5160110-44 (ext. 5032)
Email: hawkey@ait.ac.th
Internet: <http://www.ait.ac.th/>



Founded in 1959, the Asian Institute of Technology is Asia's premier international graduate school of engineering and management.

INTRODUCING AIT

AIT is composed of four schools, five academic centers, and the AIT Center in Vietnam. AIT carries out its mission through

Regular Academic Programs, leading to the award of Doctoral and Master's degrees and Diplomas;

Outreach Activities, such as short-term training courses and consultancies; and

Research Programs, which are conducted by faculty and students, or in cooperation with various institutions in Asia and other regions.

Responsibility for policy direction rests with the Board of Trustees, which consists of some 40 members from Asia, Australia, Europe, and North America.

Governments, international organizations, NGOs, foundations, business and industry, and private individuals provide grants for scholarships for deserving students, faculty and staff secondment, operating funds, continuing education, equipment, research, campus development, and the AIT Endowment Fund.

Admission to the academic programs is open to academically qualified, self-supporting students.

LOOKING BACK (1959-1996)

March 1958

The SEATO Graduate School of Engineering project, first proposed in 1957, was approved by the Council of Ministers of the South-East Asia Treaty Organization at its meeting in Manila.

July 30, 1959

His Majesty King Bhumibol Adulyadej of Thailand signed the Royal Decree establishing the SEATO Graduate School of Engineering.

September 10, 1959

The School began its first class in hydraulic engineering with 18 students from Pakistan, the Philippines and Thailand.

June 1966

The SEATO Council of Ministers' Meeting in Canberra initiated steps to phase out its control of the Graduate School and to permit its establishment as an independent institution.

November 23, 1967

The Asian Institute of Technology Enabling Act was published in the Royal Thai Government Gazette. The SEATO Graduate School of Engineering ceased to exist.

November 24, 1967

The Asian Institute of Technology was established as an independent, autonomous, international institution of higher learning.

May 4, 1968

H.M. King Bhumibol Adulyadej graciously presided over the eighth annual graduation, the first in which AIT conferred its own degrees.

February 14, 1973

H.M. King Bhumibol Adulyadej opened the new campus in Pathum Thani province.

April 1979

AIT marked its 20th anniversary, with annual enrolment averaging 485 students and the alumni body consisting of 1784 graduates.

June 22, 1987

AIT received the Science and Technology for Development Award from USAID and the National Research Council, USA.

July 21, 1987

AIT awarded the AIT Gold Medal to His Majesty King Bhumibol Adulyadej of Thailand for outstanding leadership in rural development.

August 31, 1989

AIT received the 1989 Ramon Magsaysay Award for International Understanding.

October 29, 1992

AIT awarded the AIT Gold Medal to Her Majesty Queen Sirikit of Thailand for outstanding leadership in environmen-

tal protection and natural resources conservation.

May 17, 1993

AIT opened its first academic program in Vietnam under the Swiss-AIT Vietnam Management Development Program.

July 1993

The Institute's academic restructuring resulted in the establishment of four Schools: Civil Engineering, Advanced Technologies, Management, and Environment, Resources and Development.

February 1994

The AIT Center in Vietnam based in Hanoi was officially inaugurated.

November 13, 1995

The Asian Management Awards, Asia's most rigorous examination of corporate and organizational excellence, honored AIT with an award for Development Management.

January 1996

AIT enters its 37th year with annual enrolment averaging over 1000 students, and the alumni totalling over 7500 graduates from 48 countries in Asia and the Pacific and other regions.

The AIT Alumni Association (AITAA) now has 20 national chapters.

ASIAN INSTITUTE OF TECHNOLOGY

Street Address:
Km. 42 Phaholyothin Highway
Klong Luang
Pathum Thani 12120
Thailand

Postal Address:
GPO Box 2754
Bangkok 10501
Thailand

Tel. (66-2) 516-0120-44
Cable: AIT-Bangkok
Telex: 84276TH
Fax: (66-2) 516-2126, 516-1418

E-mail addresses: Office of Media and Information Services omis@ait.ac.th
Academic Secretariat hawkey@ait.ac.th
Alumni Affairs lumen@ait.ac.th

Internet: <http://www.ait.ac.th/>

