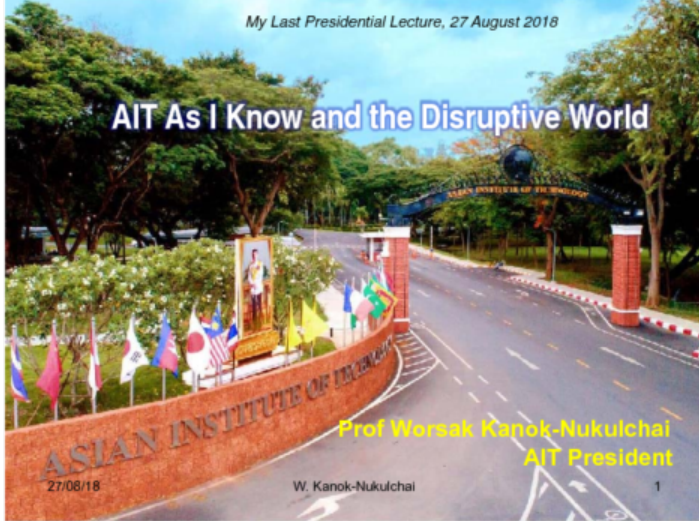


AIT As I Know and the Disruptive World



Prof Worsak Kanok-Nukulchai
AIT President

W. Kanok-Nukulchai

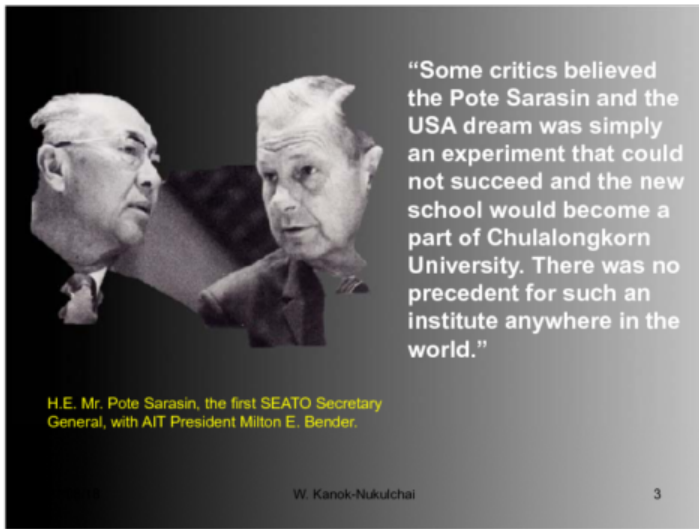
1

THE PRECURSOR OF AIT

The "SEATO Graduate School of Engineering (1959-1967)" was established by the Royal Decree at the campus of Chulalongkorn University, managed by a Board of Management appointed by the SEATO Council.



SEATO GRADUATE SCHOOL OF ENGINEERING
บัณฑิตวิทยาลัยวิศวกรรมศาสตร์ อ.ป.อ.



"Some critics believed the Pote Sarasin and the USA dream was simply an experiment that could not succeed and the new school would become a part of Chulalongkorn University. There was no precedent for such an institute anywhere in the world."

H.E. Mr. Pote Sarasin, the first SEATO Secretary General, with AIT President Milton E. Bender.

W. Kanok-Nukulchai

3

STATUS CHANGE OF AIT IN 1967 – WHY?



"Because of the ambiguous legal status and its affiliation with SEATO, it was not possible to broaden the financial base and obtain contributions from other sources."

(President Milton E. Bender in his Report to the Board of Trustees July 9 1969)
27/08/18

W. Kanok-Nukulchai



"Extensive contacts have been made with a great many potential donors including countries, foundations, UN organizations, and individuals."

4